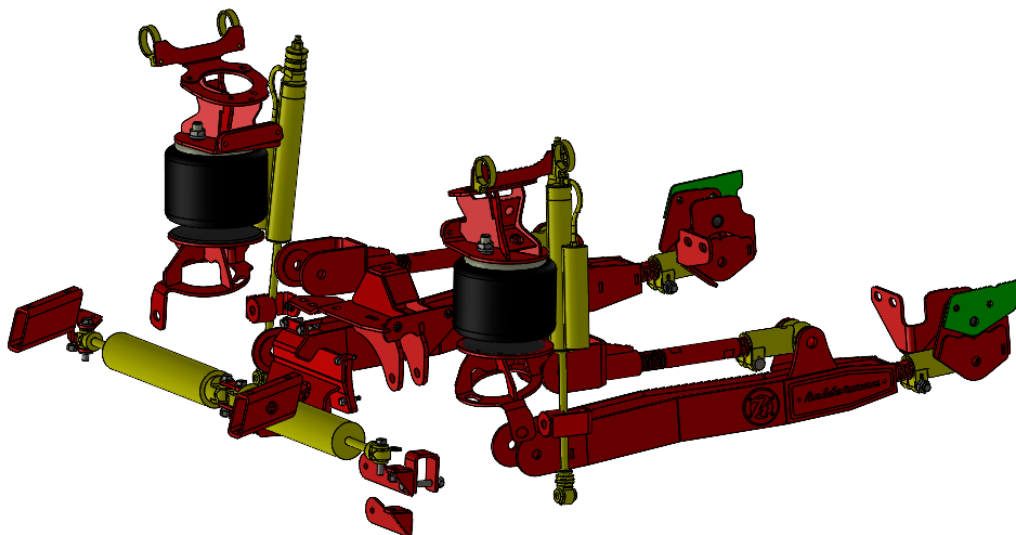


INSTALL INSTRUCTIONS

**3" LIFT FRONT -1" AXLE FORWARD  
2025+ RAM 2500/3500**

**KIT# 10034769**



*kelderman*



**KELDERMAN MANUFACTURING**

**2686 HIGHWAY 92 EAST OSKALOOSA, IOWA 52577**

**[INFO@KELDERMAN.COM](mailto:INFO@KELDERMAN.COM) 1-800-334-6150**

---

# TABLE OF CONTENTS

---

- ♦ KIT NUMBERS.....(3)
- ♦ INTRODUCTION.....(4)
- ♦ SAFETY.....(5)
- ♦ PRODUCT OWNER RESPONSIBILITIES.....(6)
- ♦ DISASSEMBLY.....(7+)
- ♦ KIT INSTALLATION.....()
- ♦ KIT DRAWINGS.....()
- ♦ NOTES.....()
- ♦ CONTACT INFORMATION.....()

---

# KIT NUMBERS

---

- THIS INSTALLATION MANUAL COVERS THE FOLLOWING AIR RIDE KITS.

KIT NUMBER	DESCRIPTION
10034769	KIT - 3 INCH LIFT - CONTROL ARM FRONT - AXLE 1" FORWARD



---

# INTRODUCTION

---

## IMPORTANT

- ♦ IT IS IMPORTANT THAT THE ENTIRE INSTALLATION INSTRUCTIONS BE READ THOROUGHLY BEFORE PROCEEDING WITH INSTALLATION.
- ♦ IF YOUR KIT WAS ORDERED RAW, OPEN EVERY BOX AND LOCATE ALL PARTS. THERE ARE SEVERAL SMALLER BUSHING PIECES AND BOLTS THAT ARE PACKAGED SEPARATELY INSIDE THE MAIN BOX.

## PRODUCT INSTALLER RESPONSIBILITIES

- ♦ INSTALLER IS RESPONSIBLE FOR INSTALLING THIS PRODUCT IN ACCORDANCE WITH KELDERMAN MFG. INC. SPECIFICATIONS AND INSTALLATION INSTRUCTIONS.
- ♦ INSTALLER IS RESPONSIBLE FOR PROVIDING PROPER INSTALLATION OF VEHICLE COMPONENTS AND ATTACHMENTS AS WELL AS REQUIRED OR NECESSARY CLEARANCE FOR SUSPENSION COMPONENTS, AXLES, WHEELS, TIRES, AND OTHER VEHICLE COMPONENTS TO ENSURE A SAFE AND SOUND INSTALLATION AND OPERATION OF THIS PRODUCT.

## DEFINITION OF TERMS

- ♦ **WARNING:** INDICATES A POTENTIALLY HAZARDOUS SITUATION WHICH, IF NOT AVOIDED, COULD RESULT IN DEATH OR SERIOUS INJURY.
- ♦ **CAUTION:** A POTENTIAL HAZARDOUS SITUATION MAY RESULT IN PROPERTY DAMAGE.
- ♦ **NOTE:** PROVIDE INFORMATION OR SUGGESTIONS THAT HELP CORRECTLY PERFORM A TASK.
- ♦ **TORQUE:** WHEN ITALICIZED "TORQUE" ALERTS THE INSTALLER TO TIGHTEN FASTENERS TO A SPECIFIED VALUE.

**BOLT TORQUE CHART**

<b>BOLT SIZE</b>	<b>GRADE 5 TORQUE</b>	<b>GRADE 8 TORQUE</b>
1/4"-20	8 <i>FT-LB</i>	12 <i>FT-LB</i>
3/8"-16	31 <i>FT-LB</i>	44 <i>FT-LB</i>
3/8"-24	35 <i>FT-LB</i>	49 <i>FT-LB</i>
1/2"-13	75 <i>FT-LB</i>	106 <i>FT-LB</i>
1/2"-20	85 <i>FT-LB</i>	120 <i>FT-LB</i>
9/16"-18	121 <i>FT-LB</i>	171 <i>FT-LB</i>
5/8"-11	150 <i>FT-LB</i>	212 <i>FT-LB</i>
5/8"-18	170 <i>FT-LB</i>	240 <i>FT-LB</i>
3/4"-16	297 <i>FT-LB</i>	420 <i>FT-LB</i>
7/8"-14	474 <i>FT-LB</i>	669 <i>FT-LB</i>



---

# SAFETY

---

## **YOUR SAFETY AND THE SAFETY OF OTHERS IS VERY IMPORTANT.**

- ◆ READ AND UNDERSTAND ALL SAFETY PRECAUTIONS AND INSTRUCTIONS BEFORE INSTALLING THIS PRODUCT.

## **CAUTION: TRUCKS EQUIPPED WITH PARKING SENSORS OR OTHER LIKE DEVICES.**

- ◆ RELOCATION OF THESE DEVICES WILL ALTER THE FIELD OF VIEW. IT IS THE RESPONSIBILITY OF THE OWNER TO UNDERSTAND HOW THESE CHANGES AFFECT THE OPERATION OF THESE SYSTEMS.

## **WARNING: COMPONENTS UNDER PRESSURE.**

- ◆ BLEED ALL PRESSURE FROM THE AIR SYSTEM BEFORE PERFORMING ANY MAINTENANCE OR SERVICE. SERIOUS INJURY COULD OCCUR IF COMPONENTS ARE REMOVED WHILE SYSTEM IS PRESSURIZED.

## **WARNING: CARELESS INSTALLATION CAN RESULT IN SERIOUS INJURY OR PROPERTY DAMAGE**

- ◆ WEAR EYE PROTECTION.
- ◆ DISCONNECT THE BATTERY BEFORE DOING ANY WORK ON THE VEHICLE.
- ◆ WORK ON FLAT LEVEL GROUND.
- ◆ ENSURE TRUCK IS PROPERLY SUPPORTED BY JACK STANDS. NEVER WORK UNDER A VEHICLE SUPPORTED ONLY BY HYDRAULIC JACKS.
- ◆ TAKE PRECAUTIONS WHEN LIFTING PRODUCT. DUE TO THE SIZE AND WEIGHT OF THIS PRODUCT TWO PEOPLE ARE RECOMMENDED FOR INSTALLATION.
- ◆ NEVER WORK DIRECTLY UNDER THE PRODUCT UNTIL IT HAS BEEN SECURELY FASTENED TO THE VEHICLE.
- ◆ AVOID SHARP, HOT, AND MOVING COMPONENTS WHEN ROUTING ELECTRICAL CABLES AND AIR LINES.
- ◆ IF DRILLING, INSPECT BOTH SIDES OF THE SURFACE AND REMOVE/RELOCATE ANY OBJECTS LOCATED IN THE WAY.
- ◆ ENSURE ALL BOLTS ARE PROPERLY TIGHTENED BEFORE DRIVING.

---

# PRODUCT OWNER RESPONSIBILITIES

---

- ◆ PRODUCT OWNER IS SOLELY RESPONSIBLE FOR PRE-OPERATION INSPECTION, PERIODIC INSPECTIONS, MAINTENANCE, AND USE OF THE PRODUCT AS SPECIFIED BY KELDERMAN MFG. INC. OF PARTICULAR IMPORTANCE IS THE RE-TORQUE OF FASTENERS.
- ◆ THIS RE-TORQUE MUST BE PERFORMED WITHIN 2500 MILES OF THIS PRODUCT BEING PUT INTO SERVICE.
- ◆ THE KELDERMAN AIR SUSPENSION IS FULLY AUTOMATIC IN CONTROLLING THE HEIGHT OF THE CHASSIS WHEN PROPERLY INSTALLED.
- ◆ NO MANUAL INTERVENTION TO CONTROL AIR PRESSURE OR RIDE HEIGHT IS NEEDED DURING THE COURSE OF NORMAL OPERATION.
- ◆ PRODUCT OWNER IS RESPONSIBLE FOR “*DOWN TIME*” EXPENSES, CARGO DAMAGE, AND ALL BUSINESS COSTS AND LOSSES RESULTING FROM A WARRANTABLE FAILURE.

## SERVICE INTERVALS

### FIRST 2,500 MILES

- ◆ CHECK RIDE HEIGHT  $\pm 1/4$ ”
- ◆ CHECK FOR AIR LEAKS AROUND FITTINGS.
- ◆ CHECK FOR ANY LOOSE OR RUBBING HOSES AND WIRES.
- ◆ RE-TORQUE ALL HARDWARE.

### EVERY 30,000 MILES

- ◆ CHECK RIDE HEIGHT  $\pm 1/4$ ”
- ◆ CHECK FOR AIR LEAKS AROUND FITTINGS.

---

# DISASSEMBLY

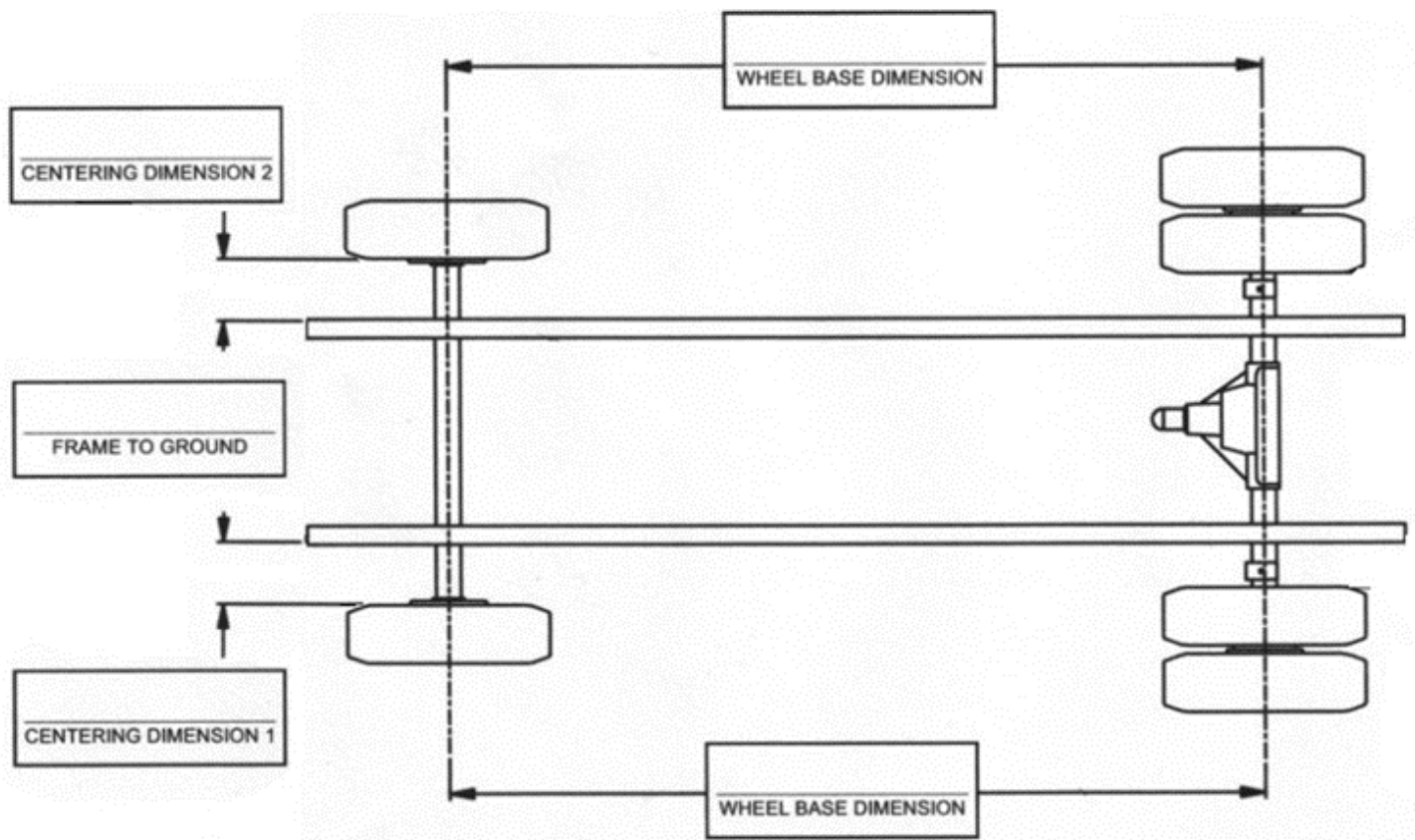
---

BEFORE DOING ANYTHING, MEASURE THE PINION ANGLE AND RECORD IT. THIS IS IMPORTANT BECAUSE YOU WILL NEED TO PUT THE AXLE BACK TO THIS MEASUREMENT AFTER INSTALLATION. SEE FIGURE 1.

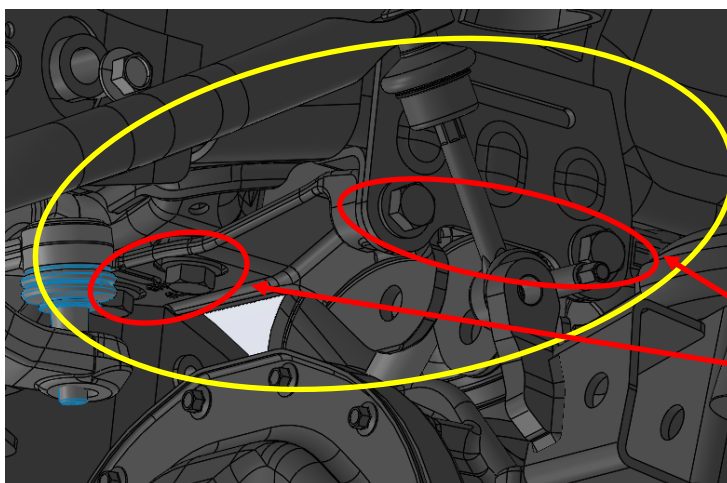
PINION ANGLE \_\_\_\_\_



TAKE THE FOLLOWING MEASUREMENTS FOR FUTURE REFERENCE. THESE MEASUREMENTS WILL BE USED TO ADJUST THE SUSPENSION AFTER INSTALLATION.



1. IF YOU DO NOT HAVE A LIFT, JACK THE TRUCK UP AT THE FRONT AXLE AND PLACE JACK STANDS UNDER THE FRONT OF THE FRAME JUST BEHIND THE RADIATOR. REMOVE THE WHEELS AND REMOVE THE SHOCKS. LOWER THE JACK DOWN SO THE TENSION IS OFF THE COIL SPRINGS AND REMOVE THE SPRINGS. UNFASTEN THE STEERING ARM FROM THE PITMAN ARM. REMOVE FACTORY TRACK BAR MOUNT AND KEEP HARDWARE. UN-BOLT THE DRIVESHAFT AND LEAVE IT LOOSE.



REMOVE FACTORY TRACK  
BAR MOUNT

KEEP HARDWARE FOR  
LATER INSTALL

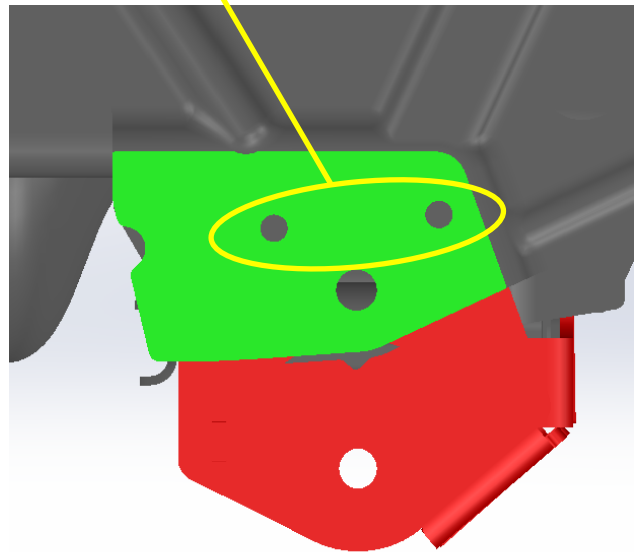
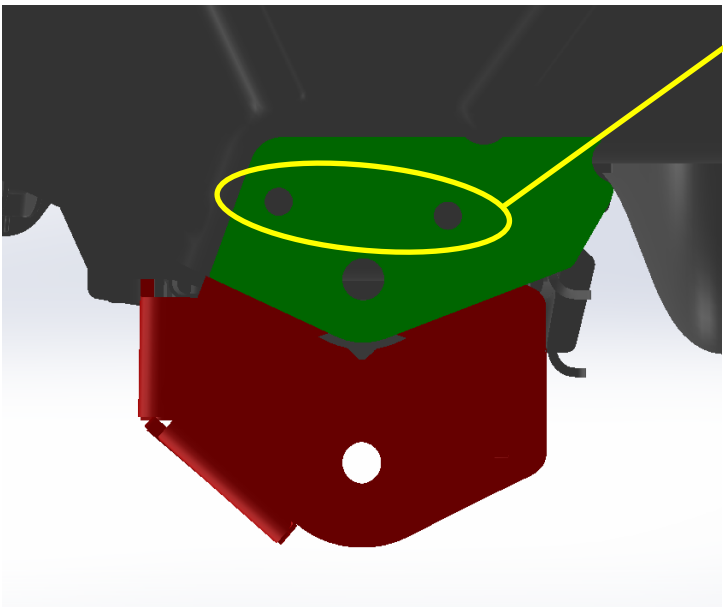
---

# ASSEMBLY

---

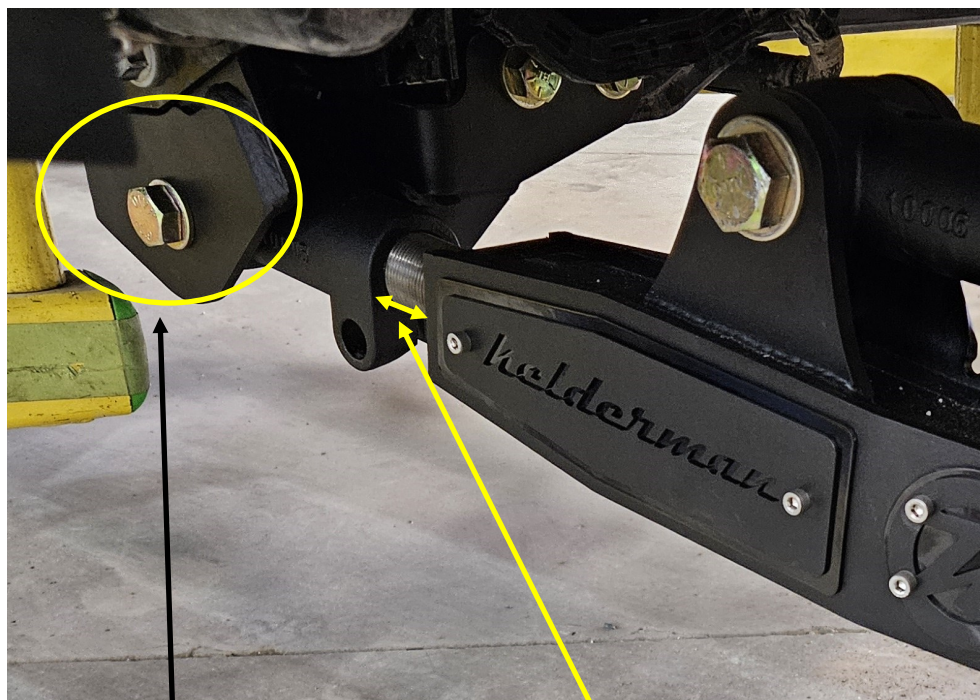
1. LOCATE RADIUS ARM DROP WELDMENT (#10037498-DS & #10037502-PS). REMOVE FACTORY RADIUS ARM, ***ONLY DO ONE SIDE AT A TIME***. USING THE DRILL TEMPLATE, DRILL THE HOLES TO ATTACH THE RADIUS ARM DROP. DRILL THE HOLES TO  $17/32$ " FOR BOLT CLEARANCE. BACK OUT THE CROSSMEMBER BOLTS AND INSTALL THE MOUNTING BRACKETS WITH  $1/2$ "-20 X  $1-1/2$ " BOLTS. USE THE FACTORY RADIUS ARM BOLT IN THE TOP HOLE AND USE THE  $5/8$ "-18 X  $8-1/2$ " BOLTS TO ATTACH THE FRONT OF THE RADIUS ARM DROPS. USE THE M18-2.5MM X 130 BOLT TO CONNECT THE RADIUS ARM TO THE MOUNT. TORQUE THE M18 BOLTS TO 150 FT./LBS. AND THE  $5/8$ " CROSSMEMBER BOLTS TO 130 FT./LBS.

DRILL TO  $17/32$ "



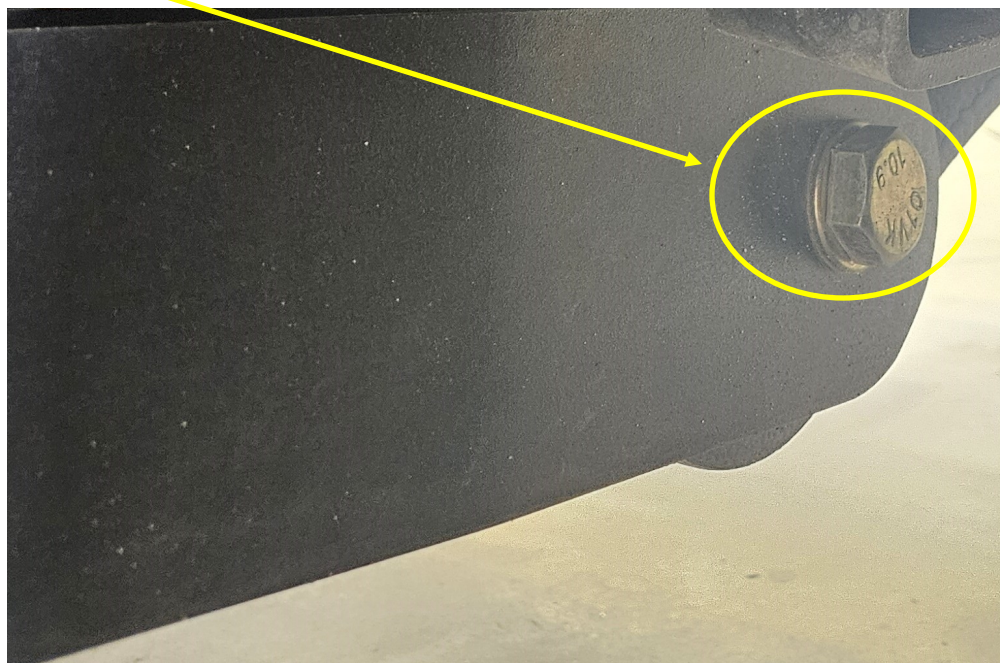


2. LOCATE RADIUS ARM ASSEMBLY (#10034775-DS & #10034756-PS). INSTALL THE RADIUS ARM ASSEMBLY TO THE DROP MOUNT WITH M18-2.5MM X 130MM BOLT. SET THE GAP BETWEEN THE CAST KNUCKLE AND RADIUS ARM TO APPROXIMATELY 2". YOU MAY NEED TO ROTATE THE CAST KNUCKLES TO GET THE CORRECT LENGTH DURING INSTALL. THE RADIUS ARM BOLTS TO THE LOWER FACTORY RADIUS ARM LOCATION WITH THE M18-2.5MM X 130MM BOLTS. TORQUE THE M18 BOLTS TO 150 FT./LBS.

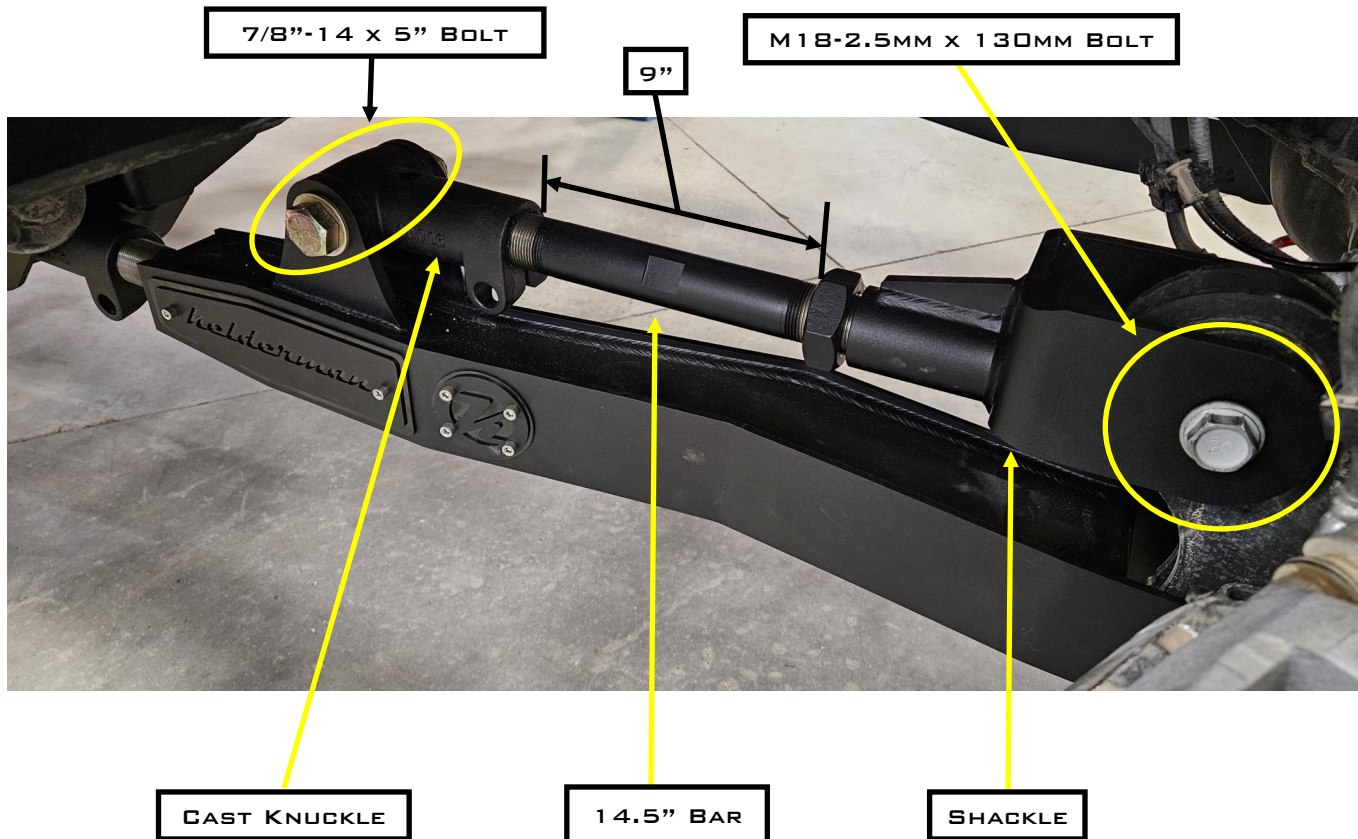


M18-2.5 X 130MM BOLT

2" SPACING



3. LOCATE RADIUS ARM SHACKLE (#10014992-DS & #10015016-PS), CAST KNUCKLE (#10006), 14.5" TRAILING ARM BARS (#52114.5) AND 1-1/2"-12 JAM NUTS (#13219). ASSEMBLE JAM NUT TO THE BAR THEN THREAD BAR INTO SHACKLE. THREAD THE CAST KNUCKLE ON THE OTHER END OF THE BAR. THERE SHOULD BE ABOUT 9" BETWEEN THE JAM NUT AND THE CAST KNUCKLE (*ADJUSTMENT MAYBE NEEDED DEPENDING ON THE PINION ANGLE*). ATTACH TO THE UPPER FACTORY RADIUS ARM LOCATION WITH M18-2.5MM X 130MM BOLT. ATTACH THE KNUCKLE END TO THE RADIUS ARM ASSEMBLY WITH 7/8"-14 X 5" BOLT. TORQUE THE M18 AND 7/8" BOLTS TO 150 FT./LBS.



4. PROCEED WITH THE OTHER SIDE FOLLOWING THE STEPS 1-3.

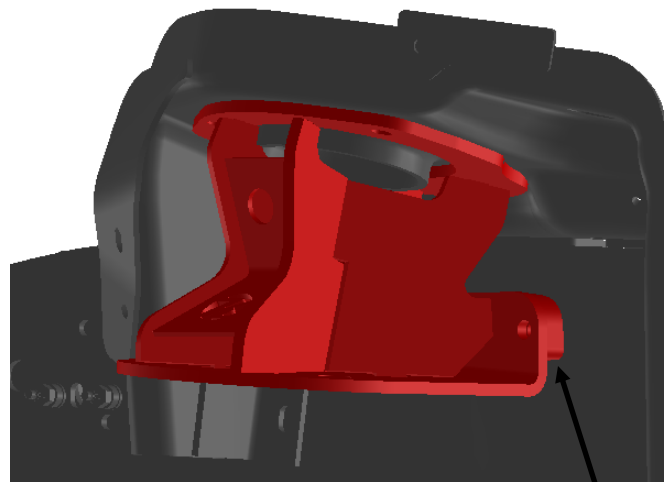
5. LOCATE THE UPPER BAG MOUNTS (#10034804-DS AND 10034847-PS), UPPER RESERVOIR MOUNTS (#10037488-DS AND #10004566-PS) AND FRAME WELD ON PLATES (10013535). IF YOUR TRUCK IS RUNNING MONOTUBE SHOCKS YOU WILL NOT USE THE UPPER RESERVOIR MOUNTS. THERE ARE TWO HOLES IN THE UPPER COIL SPRING BUCKET. THE REAR HOLE IS NOT USED FOR BOLTING. HOLD THE UPPER BAG MOUNT IN PLACE, LINE UP THE FOREWORD HOLE AND MARK THE OTHER HOLE. PULL THE UPPER BAG MOUNT, CENTER PUNCH THE MARK AND DRILL TO 7/16".

ATTACH SPACER PLATE TO THE UPPER BAG MOUNT WITH 3/8"-24 X 1" BOLTS AND LINE UP THE HOLE IN THE SPRING PERCH WITH THE HOLE IN THE UPPER BAG MOUNT. HOLD THE UPPER BAG MOUNT IN PLACE AND TACK THE SPACER INTO PLACE. REMOVE THE UPPER BAG MOUNT, WELD AROUND THE SPACER. **NOTE: WHEN WELDING AND TACKING, WOULD RECOMMEND COVERING THE POWDER COATED PARTS, TO KEEP SPARKS FROM DAMAGING THE POWDER COAT.**

FASTEN THE UPPER BAG MOUNT IN PLACE BY INSTALLING THE (4) 3/8"-24 X 1" BOLTS IN THE SPACER PLATE (USE BLUE LOCTITE) AND ONLY SNUG UP WITH A RATCHET. **DO NOT USE AN IMPACT AS IT WILL STRIP THE HOLE.** IF USING THE RESERVOIR MOUNTS, SLIDE THEM IN BETWEEN THE UPPER SPRING BUCKET AND UPPER AIR BAG MOUNT. TIGHTEN THE 3/8" BOLTS IN THE TOP TO 35 FT./LBS.



BOLT THIS HOLE AND MARK THE OTHER SIDE



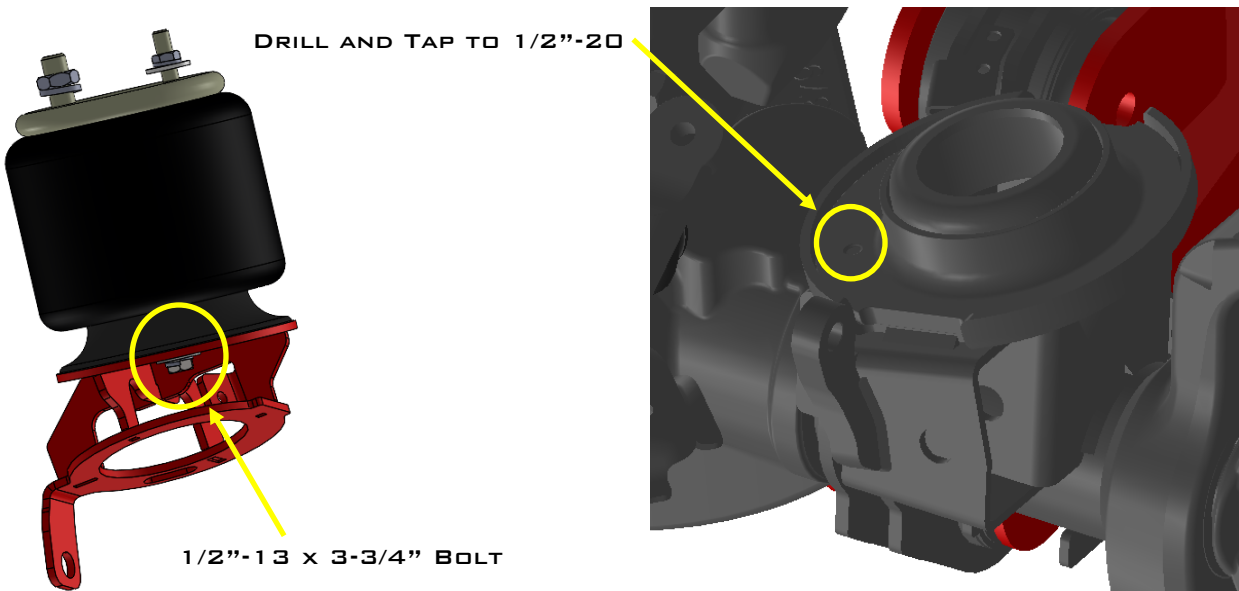
MARK SPACER PLATE AND WELD AROUND THE OUTSIDE ON EACH SIDE AND A STICH IN THE CENTER



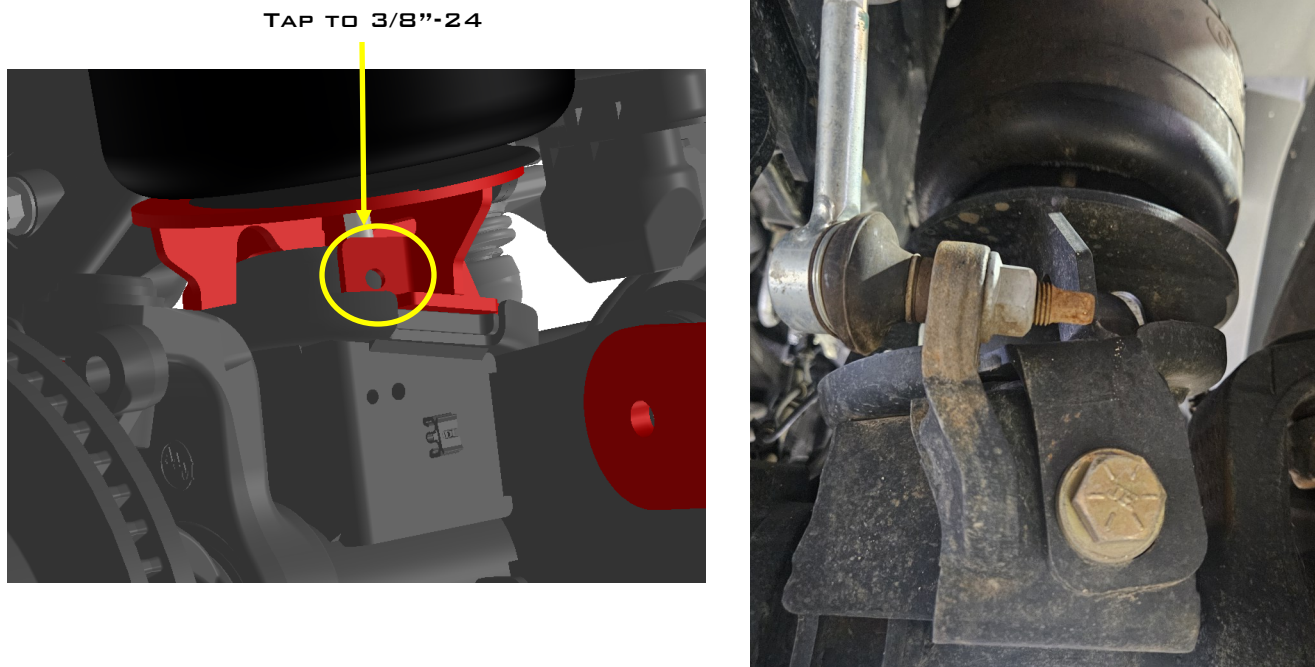
THE REMOTE RESERVOIR SHOCK MOUNT FASTENS IN BETWEEN THE UPPER COIL BUCKET AND UPPER BAG MOUNT



6. LOCATE LOWER BAG MOUNTS (#10037573-DS & 10037576-PS), AIR BAGS (#80012-5323) AND THE ADJUSTABLE TRACK BAR (#80251). REMOVE THE FACTORY TRACK BAR. FASTEN THE AIR BAG TO THE LOWER AIR BAG MOUNT WITH THE 1/2"-13 X 3-3/4" BOLT. *DO NOT TORQUE YET.* THE AIR BAG WILL NEED TO BE TURNED TO LINE UP WITH THE UPPER AIR BAG MOUNTS. FIND THE HOLES IN THE BOTTOM OF THE SPRING BUCKET. THE HOLE TOWARDS THE CENTER OF THE TRUCK WILL BE TAPPED TO 1/2"-20".



7. INSTALL THE LOWER BAG ASSEMBLY & FASTEN WITH A 1/2"-20 X 1" BOLT IN THE HOLE THAT WAS JUST DRILLED AND TAPPED. LOCATE THE 3/8" HOLE IN THE REAR OF THE AIR BAG MOUNT. DRILL A 21/64" INTO THE LOWER SPRING PERCH, USING THE 3/8" HOLE GUIDE. TAP THIS HOLE TO 3/8"-24". ONCE THIS IS DONE INSERT THE 3/8"-24 X 1-1/2" BOLT AND TORQUE BOTH BOLTS TO 35 FT./LBS. THE PASSENGER SIDE ALSO USES THE FACTORY TRACK BAR TO HOLD THE LOWER BAG IN PLACE, SO INSERT THE FACTORY TRACK BAR INTO THE PASS SIDE AXLE MOUNT. YOU WILL ATTACH THE OTHER END OF THE TRACK BAR IN THE UPCOMING STEPS. THE DRIVERS SIDE USES THE 5/8"-18 X 1-1/2" BOLT ON THE FRONT TO HOLD THE LOWER BAG MOUNT. TIGHTEN BOLTS TO 175 FT./LBS.

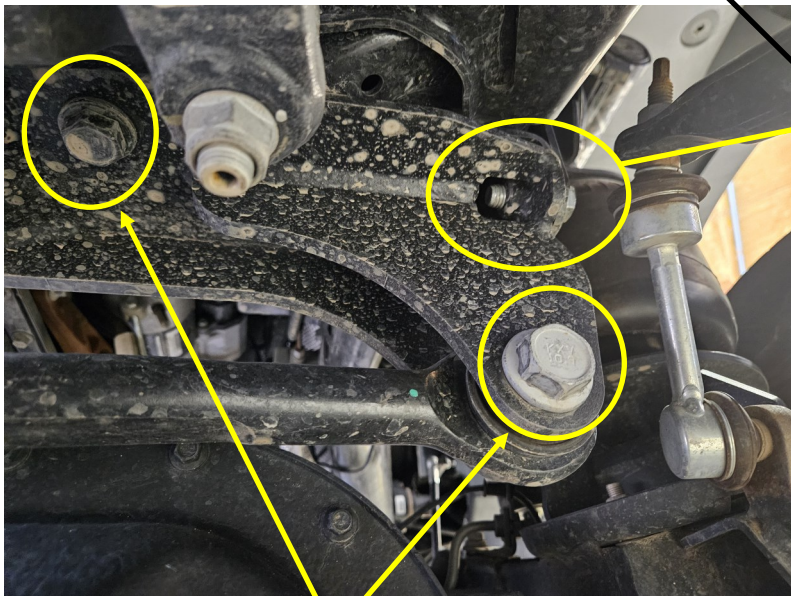


8. FASTEN THE AIR BAGS INTO THE UPPER AIR BAG MOUNTS. USE THE 3/4" AND 1/2" NUTS AND LOCK WASHERS ON THE TOP. TIGHTEN ALL THE NUTS AND BOLTS TO 35 FT./LBS. LOCATE THE AIR FITTING AND INSTALL INTO THE AIR PORT ON TOP OF THE BAG. TIGHTEN FINGER TIGHT AND THEN ONE COMPLETE TURN AFTER THAT.



9. LOCATE THE PANHARD BAR DROP (#10034825). THE DROP ATTACHES TO THE FACTORY LOCATION WITH 1/2"-13 X 1-1/2" BUTTON HEAD SCREWS AND FACTORY HARDWARE. YOU WILL ATTACH THE FACTORY TRACK BAR WITH FACTORY HARDWARE SAVED FROM DISASSEMBLY. WELD SLOTS AFTER TIGHTENING BOLTS.

1/2"-13 X 1-1/2" BITTON HEAD SCREW



FACTORY HARDWARE

WELD SLOTS





10. LOCATE THE BRAKE LINE STAND OFF BRACKET WELDMENT (#10037517). INSTALL BETWEEN THE BRAKE LINE MOUNTING BRACKET AND THE AXLE. THIS WILL PREVENT THE BRAKE LINE FROM RUBBING ON THE LOWER AIR BAG MOUNT.

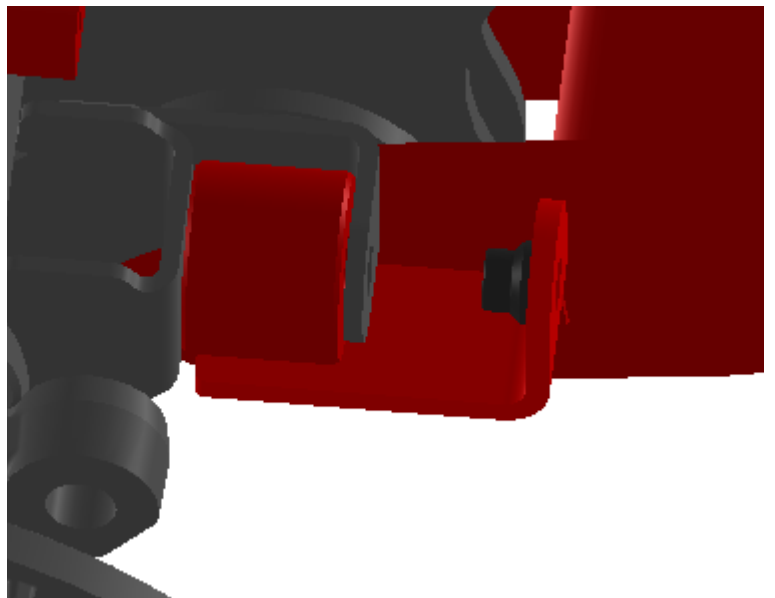


11. LOCATE THE LOWER SHOCK MOUNTS (#18378). THEY FASTEN INTO THE LOWER OEM SHOCK MOUNTS WITH THE FACTORY SHOCK BOLT.

**A WELD IS ALSO REQUIRED TO ADD ADDITIONAL STRENGTH TO THE SHOCK MOUNT. USE PROPER SAFETY GEAR AND ELECTRONICS PROTECTION WHEN WELDING.**

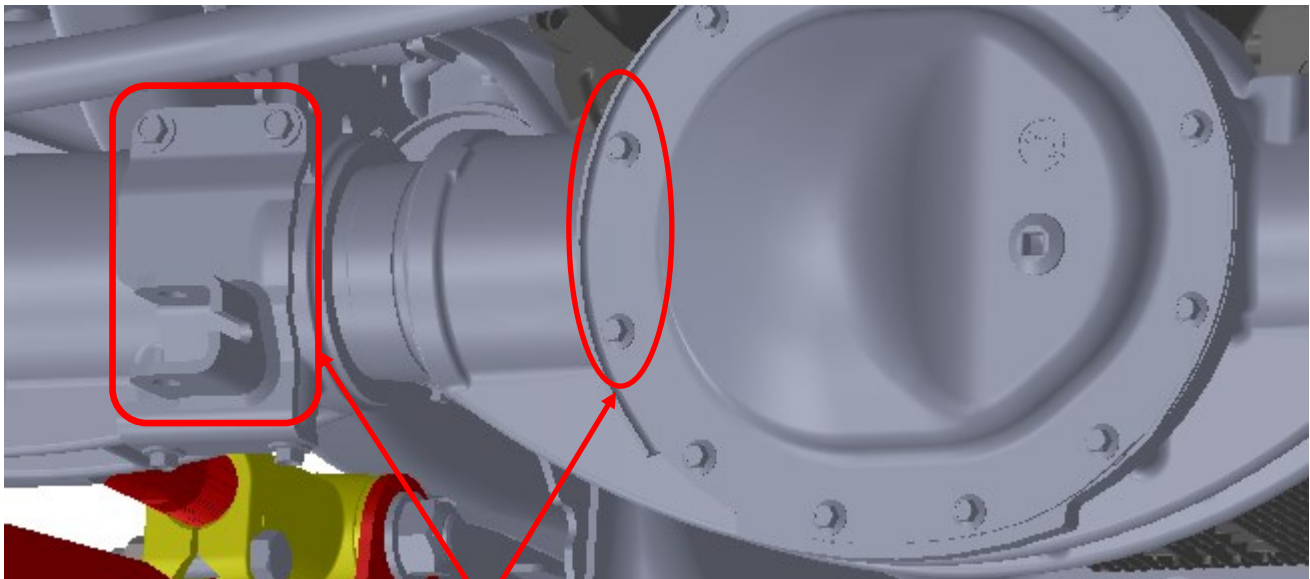


12. LOCATE THE SHOCKS (#10003380). FASTEN THE LOWER END OF THE SHOCK INTO THE SHOCK MOUNT WITH THE 1/2"-20 X 5-1/2" BOLT AND SLIDE THE ROUND END OF THE MOUNT IN THE FACTORY SHOCK LOCATION ON THE AXLE. TORQUE THIS BOLT TO 125 FT./LBS.





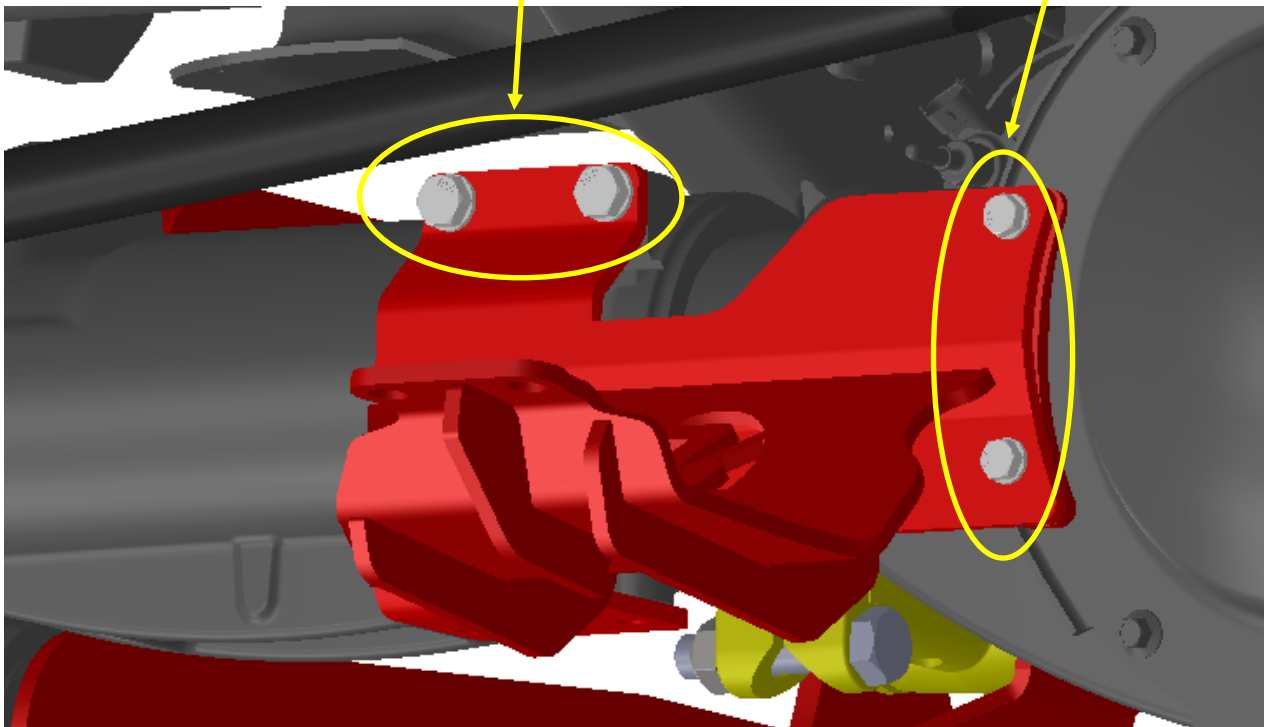
13. LOCATE THE STEERING STABILIZER KIT. LOCATE THE STEERING STABILIZER BRACKET (#18443) AND SPACER (#18333). REMOVE THE CENTER (2) BOLTS OFF THE DIFFERENTIAL COVER. REMOVE THE OEM FACTORY STEERING SHOCK AND STABILIZER BRACKET OFF THE BOTTOM OF THE AXLE. ONLY THE BOTTOM BOLTS WILL BE RE-USED. PLACE THE CENTER K BRACKET ON THE FRONT OF THE AXLE. USE THE M10 AND M8 BOLTS TO ATTACH THE TOP OF THE BRACKET TO THE AXLE AND OVER THE DIFF COVER. IF USING THE STOCK DIFF COVER, MAKE SURE TO PLACE THE SPACER BETWEEN THE DIFF. COVER AND BRACKET. LOCATE THE OEM BOLTS THAT HELD THE FACTORY STEERING SHOCK IN PLACE AND USE THOSE BOLTS TO ATTACH THE K BRACKET TO THE BOTTOM OF THE AXLE. TORQUE ALL THE BOLTS TO 20 FT./LBS.



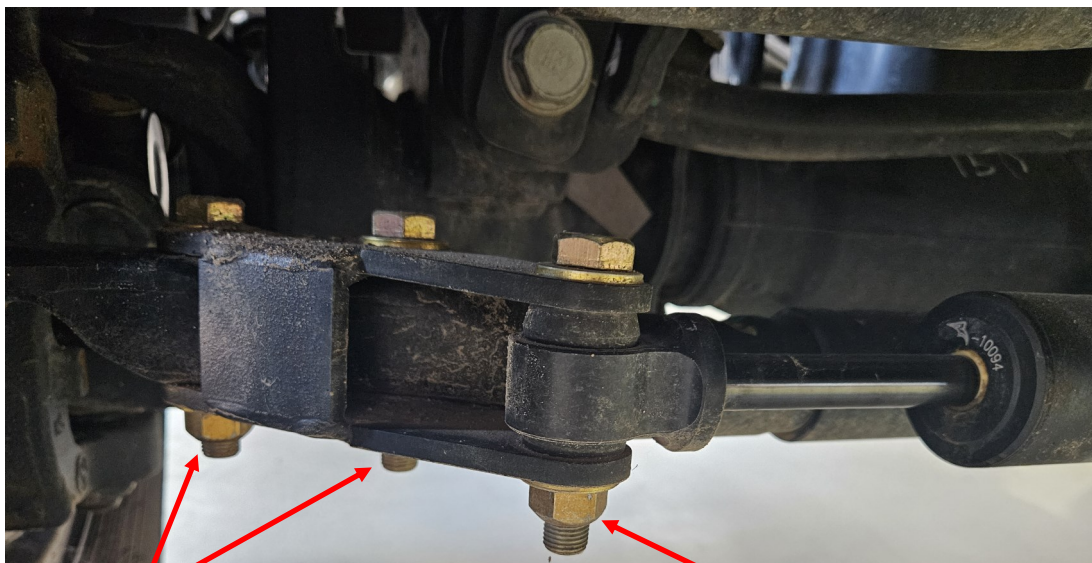
REMOVE AND DISCARD

M10-1.5MM X 40MM BOLTS

M8-1.25MM X 40MM BOLTS



14. LOCATE THE SHOCK STRAP (#20227), STABILIZER SHOCKS (#10003382) AND OUTER SHOCK MOUNTS (#18400-PS & 18397/18409-DS OR 10015301). THE DRIVER SIDE OUTER SHOCK MOUNTS FASTEN TO THE TIE ROD WITH THE OEM BOLT AND 1/2"-20 X 2-1/2" BOLTS. THE PASSENGER SIDE OUTER SHOCK MOUNT ATTACHES TO THE TIE ROD WITH 1/2"-20 X 3" BOLTS THAT HELD THE OEM SHOCK BRACKET IN PLACE AND TO THE SHOCK WITH 1/2"-20 X 2-1/2" BOLT.



1/2"-20 x 2-1/2"

1/2"-20 x 3"



SHOCK STRAP

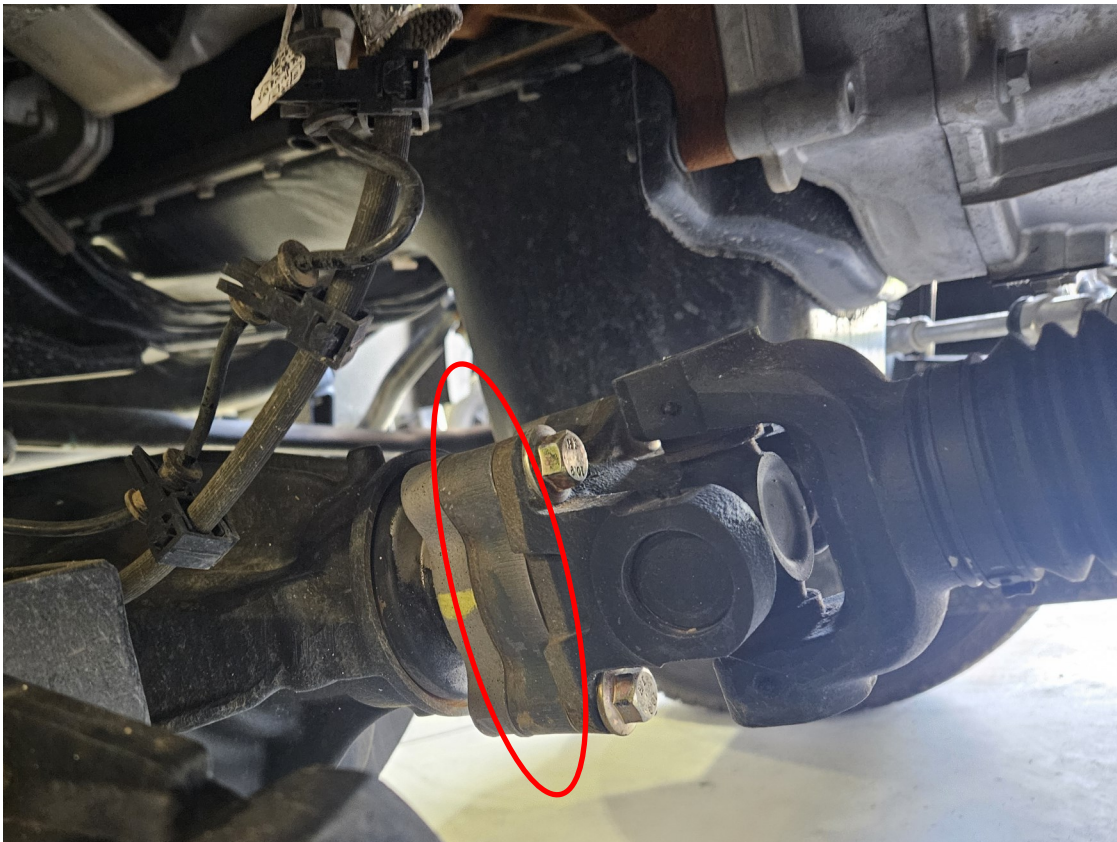


15. LOCATE THE SWAY BAR DROPS (#10035152-DS & 10035153-PS). FASTEN IN PLACE WITH THE FACTORY BOLTS ON THE TOP AND FASTEN THE SWAY BAR TO THE SWAY BAR DROP WITH THE 1/2"-20 X 1-1/2" BOLTS. TORQUE TO 50 FT./LBS.

1/2"-20 x 1-1/2"



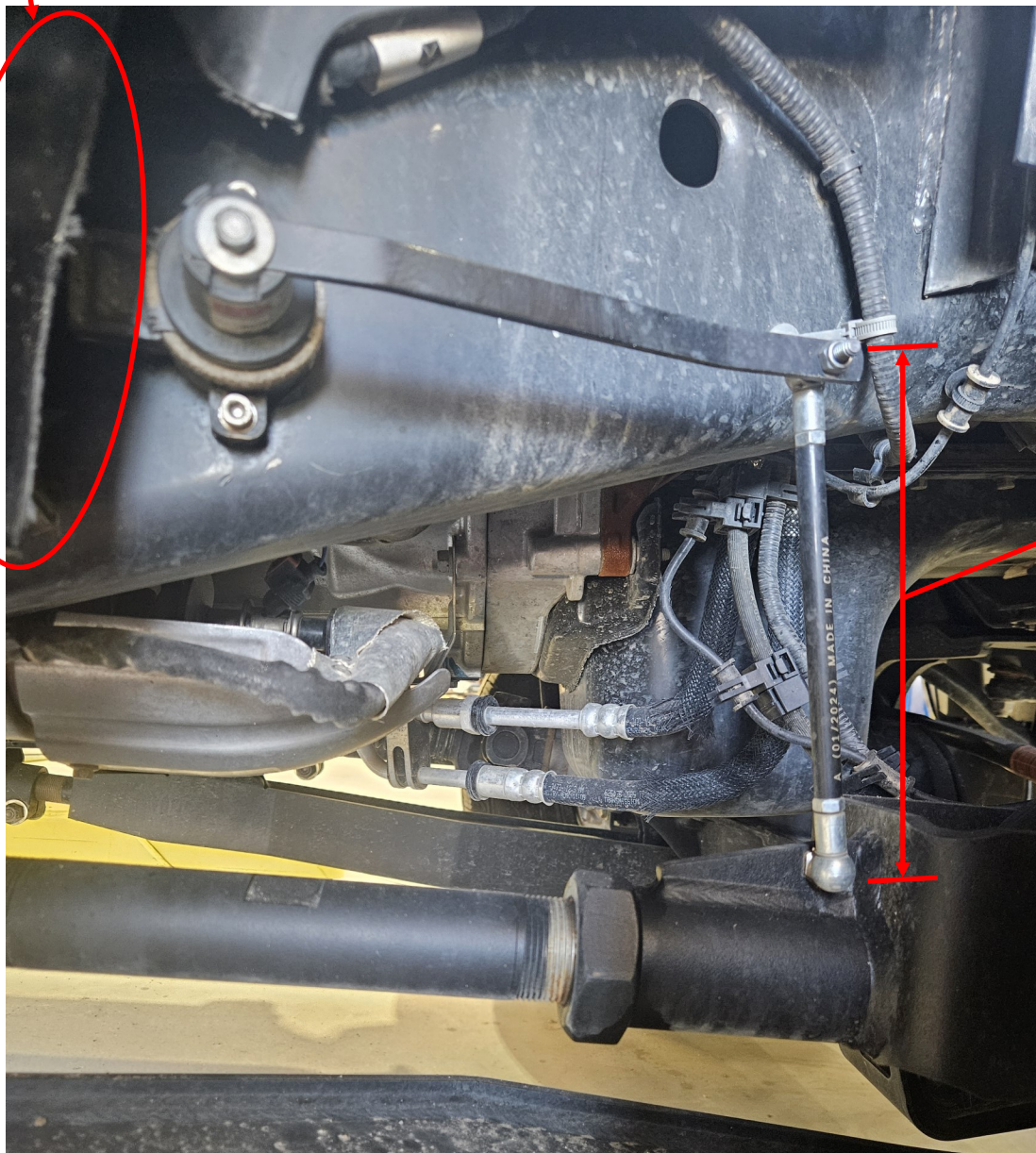
16. LOCATE THE DRIVESHAFT SPACER (#10004625). THE SPACER WILL INSTALL BETWEEN THE AXLE AND THE DRIVESHAFT WITH M12-1.75MM X 50MM FLANGE BOLTS.





17. LOCATE THE RIDE HEIGHT SENSOR, 5/16"-18 BALL STUD AND 7" LINKAGE. THE SENSOR WILL MOUNT TO THE SIDE OF THE FRAME. THE INNER FENDER LINER WILL NEED TO BE TRIMMED AT THE BOTTOM INSIDE WHERE IT IS CLOSE TO THE FRAME. PLACE THE SENSOR AGAINST THE FRAME WITH THE MOUNTING HOLES STRAIGHT UP AND DOWN. MARK THE HOLES IN THE SENSOR TO LOCATE WHERE TO DRILL THE HOLES. USE A 13/64" DRILL BIT TO DRILL THE HOLES. USE A 1/4"-20 TAP TO THREAD THE HOLES. MOUNT THE SENSOR TO THE FRAME WITH THE 1/4"-20 X 1" BOLTS. INSTALL THE BALL STUD WILL THREAD INTO THE CONTROL ARM (FACTORY AND KELDERMAN). USE THE 1/4" DRILL BIT TO DRILL THE HOLE. THREAD THE BALL STUD INTO THE HOLE. REMOVE THE CLIP ON THE END OF THE LINKAGE AND ATTACH THE LINKAGE TO THE SENSOR AND CONTROL ARM. RE-INSTALL THE CLIP AND THE LINKAGE INSTALL IS COMPLETE.

TRIM INNER FENDER



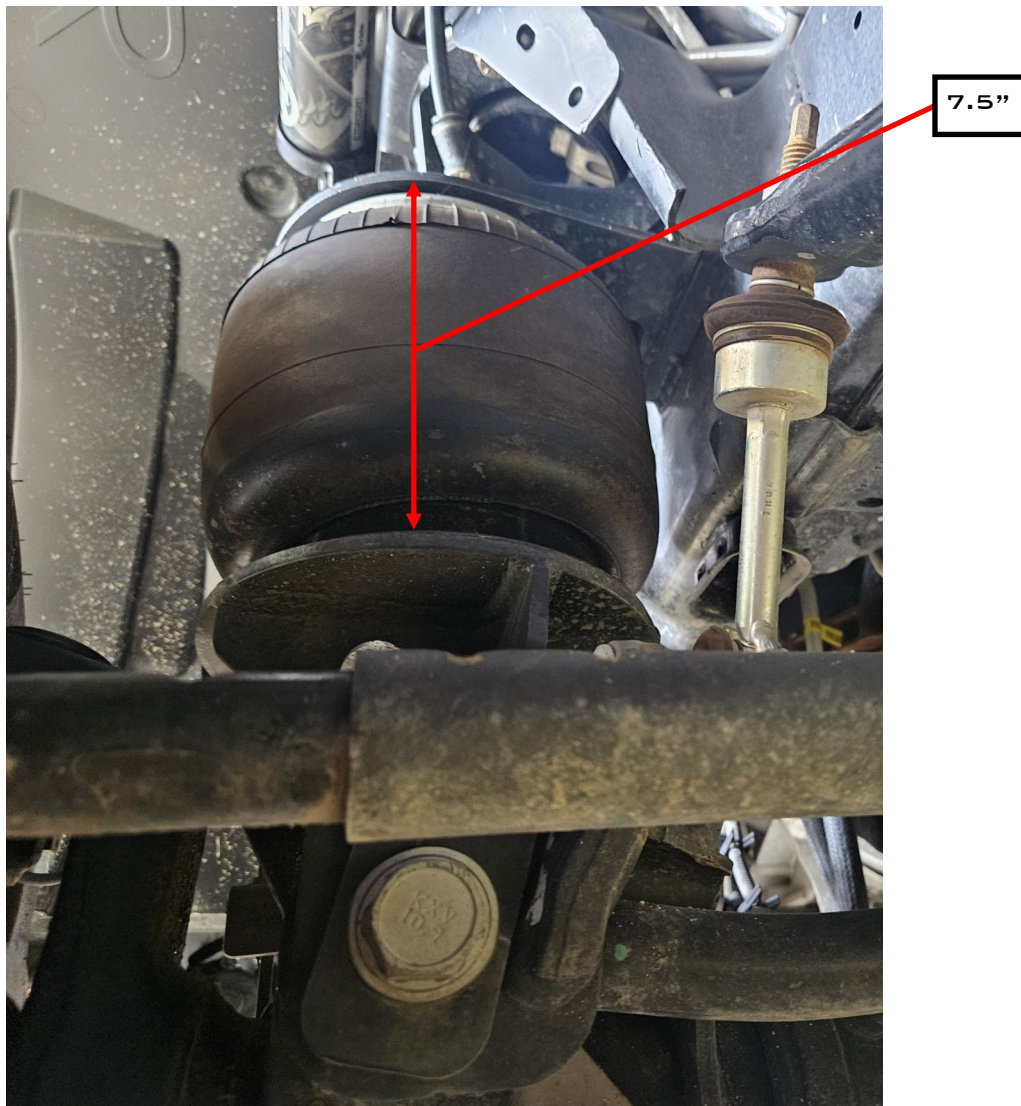
7" LINKAGE



18. WHEN PROGRAMING THE CONTROL SYSTEM, THE FRONT AIR BAG NEEDS TO RUN AT A RIDE HEIGHT OF 7.5" WHEN MEASURING THE AIR BAG, MEASURE BETWEEN THE MOUNTING BRACKETS.

19. MOVE THE TRUCK IN AND OUT OF THE SHOP IN ORDER TO GET AN IDEA OF ADJUSTMENT REQUIRED FOR STRAIGHTENING THE STEERING WHEEL. USE THE ADJUSTMENT ON THE DRAG LINK TO SET THE WHEEL STRAIGHT AND CONDUCT A TEST DRIVE. IF THE TRUCK PULLS TO ONE SIDE OR THE OTHER, A CASTER ADJUSTMENT SHOULD BE MADE. TAKE THE TRUCK TO AN ALIGNMENT SHOP AND GET AN ALIGNMENT.

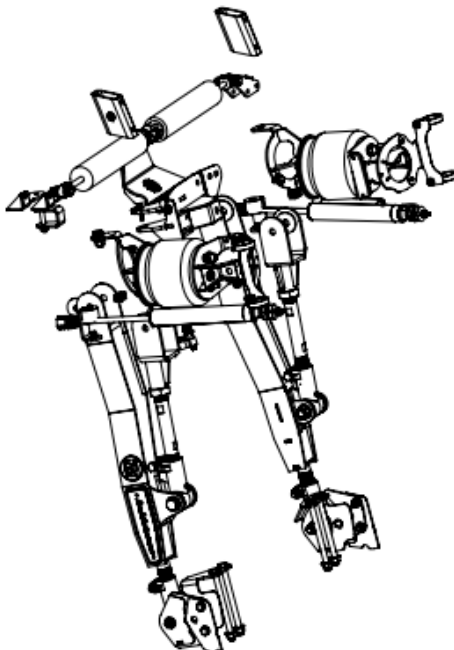
20. ONCE THE SUSPENSION HAS 300 MILES ON IT, RE-TORQUE ALL THE BOLTS. CHECK THE BOLTS AT REGULAR SERVICE (OIL CHANGE) INTERVALS AFTER THAT.



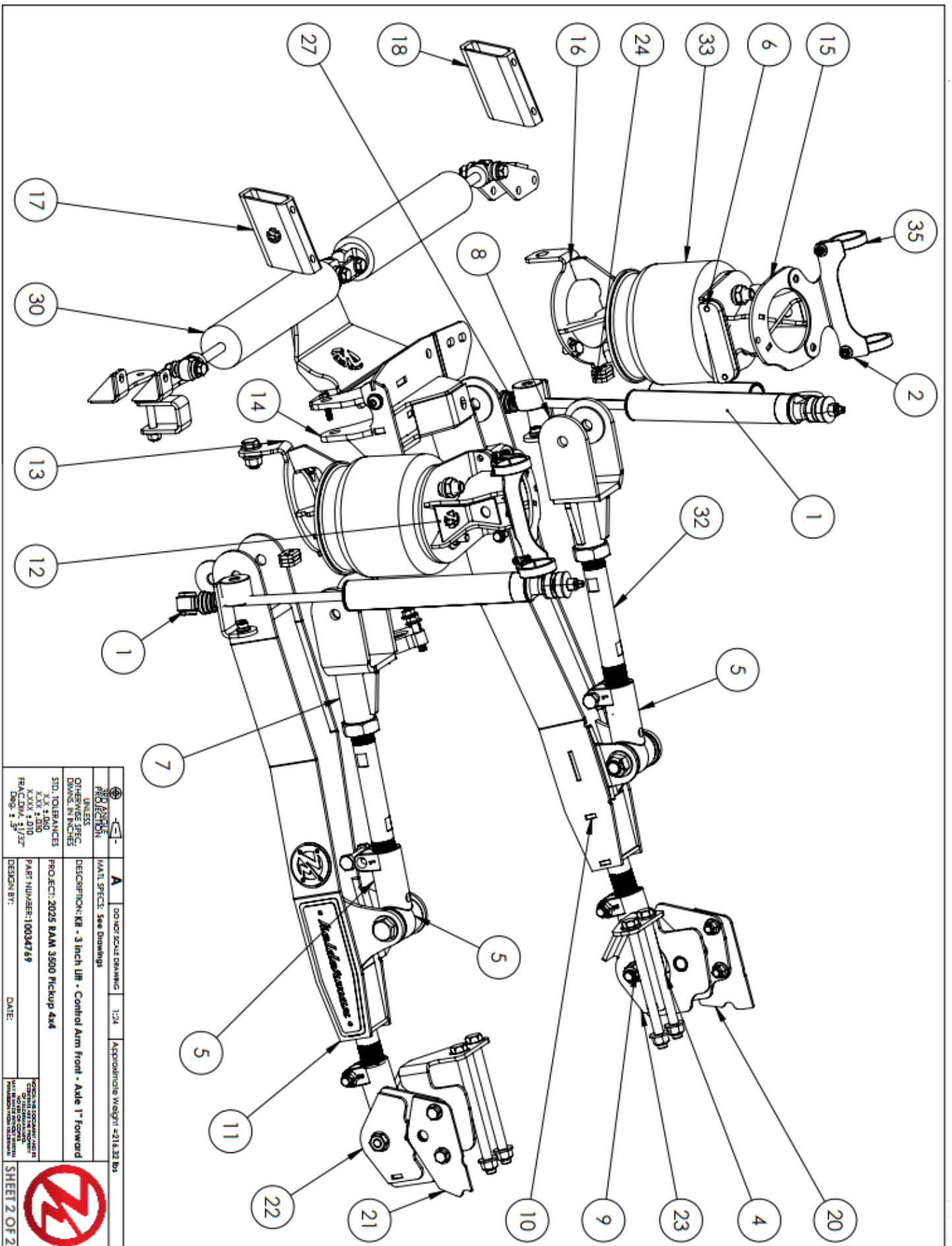
# KIT DRAWINGS

ITEM NO.	PART NUMBER	DESCRIPTION	QTY
1	10003380	Kelderman-Raptor 2.0 Stem Mount Remote Reservoir Shock. (10092LH)	2
2	10004566	PLATE - 11 GA - RAPTOR SHOCK RESERVOIR FRONT MOUNT - W/BENDS	1
3	10004625	PLATE - 1" - FRONT DRIVE SHAFT DIFFERENTIAL FLANGE EXTENSION (7/8" - W/MACHINING	1
4	10005	PURCHASED PARTS - CAST TRAILING ARM KNUCKLE (RHT) (1-1/2"-12 UNF)	2
5	10006	PURCHASED PARTS - CAST TRAILING ARM KNUCKLE (LHT) (1-1/2"-12 UNF)	2
6	10013535	PLATE - 1/2" - FRAME WELD-ON FRONT PERCH	2
7	10014992	WELDMENT - RADIUS ARM SHACKLE (DS)	1
8	10015016	WELDMENT - RADIUS ARM SHACKLE (PS)	1
9	10015059	SLEEVE - 1.125" OD X 0.72" ID X 3" LONG	2
10	10034756	WELDMENT - (PS) RADIUS ARM	1
11	10034775	WELDMENT - (DS) RADIUS ARM	1
12	10034808	WELDMENT - (DS) UPPER BAG PLATE	1
13	10034809	WELDMENT - (DS) AXLE / LOWER BAG MOUNT	1
14	10034825	WELDMENT - PHB DROP	1
15	10034847	WELDMENT - (PS) UPPER BAG PLATE	1
16	10034849	WELDMENT - (PS) AXLE / LOWER BAG MOUNT	1
17	10035152	TUBE - 2 X 3 X 1/4" - SWAYBAR DROP BRACKET (DS)	1
18	10035153	TUBE - 2 X 3 X 1/4" - SWAYBAR DROP BRACKET (PS)	1
19	10037488	Plate - (DS) Raptor Shock Reservoir Front Mount - w/Bends	1
20	10037496	PLATE - DRILL JIG (PS)	1
21	10037497	Plate - Drill Jig (DS)	1
22	10037498	WELDMENT - CONTROL ARM DROP (DS)	1
23	10037502	WELDMENT - CONTROL ARM DROP (PS)	1
24	10037517	WELDMENT - BRAKE LINE STAND OFF BRACKET	2
25	13219	JAM NUT RHT - 1-1/2"-12 - GR5 - PLAIN	2
26	15815	PLATE - 7GA - .781" ID X 2.50" OD X .177" THK	4
27	18378	WELDMENT - FOX SHOCK RELOCATION BRACKET	2
28	18777	PLATE - 1/4" - PHB WASHER - KITS W/ 3/4" BOLT	2
29	18792	SHOCK SPACER	2
30	18961	ASSEMBLY - 3" STEERING STABILIZER	1
31	20093	BUSHING - 1-1/8" OD X .880" ID X 3"L	2
32	52114.5	TUBE - TRAILING ARM - 14.5" LONG - THREAD: EXTERNAL 1.5"-12	2
33	80012-53323	AIR BAG - FIRESTONE 53323	2
34	80136	PURCHASED - POLY HAT BUSHING - 1.79" OD X 1-1/8" ID X 1-7/16" L	8
35	80227	PURCHASED - ALUMINUM SPLIT CLAMP - 2.0" DIA	4
36	80264	PURCHASED - VIBRATION-DAMPING LOOP CLAMP - 1/2" ID	1

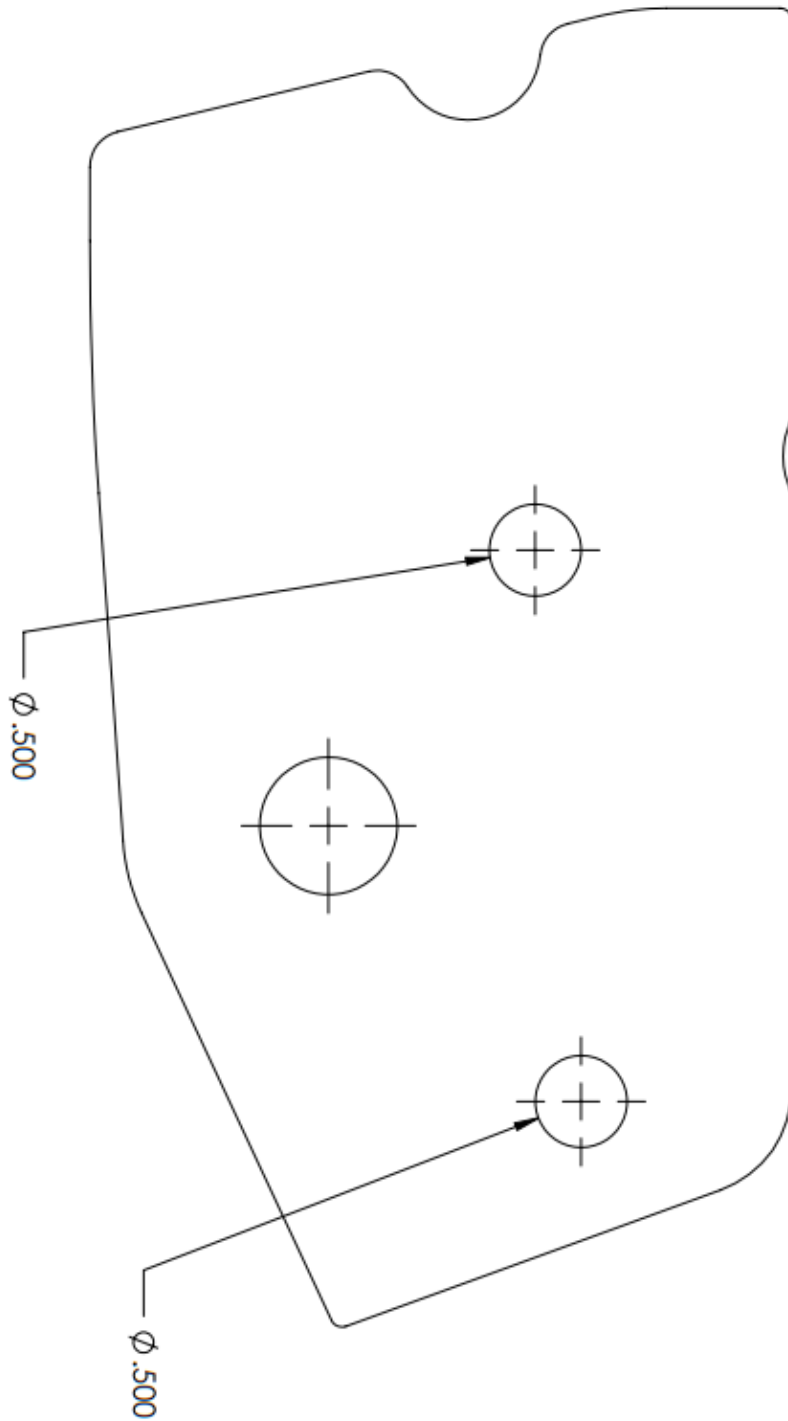
REVISIONS			
REV.	DESCRIPTION	DATE	BY



<			

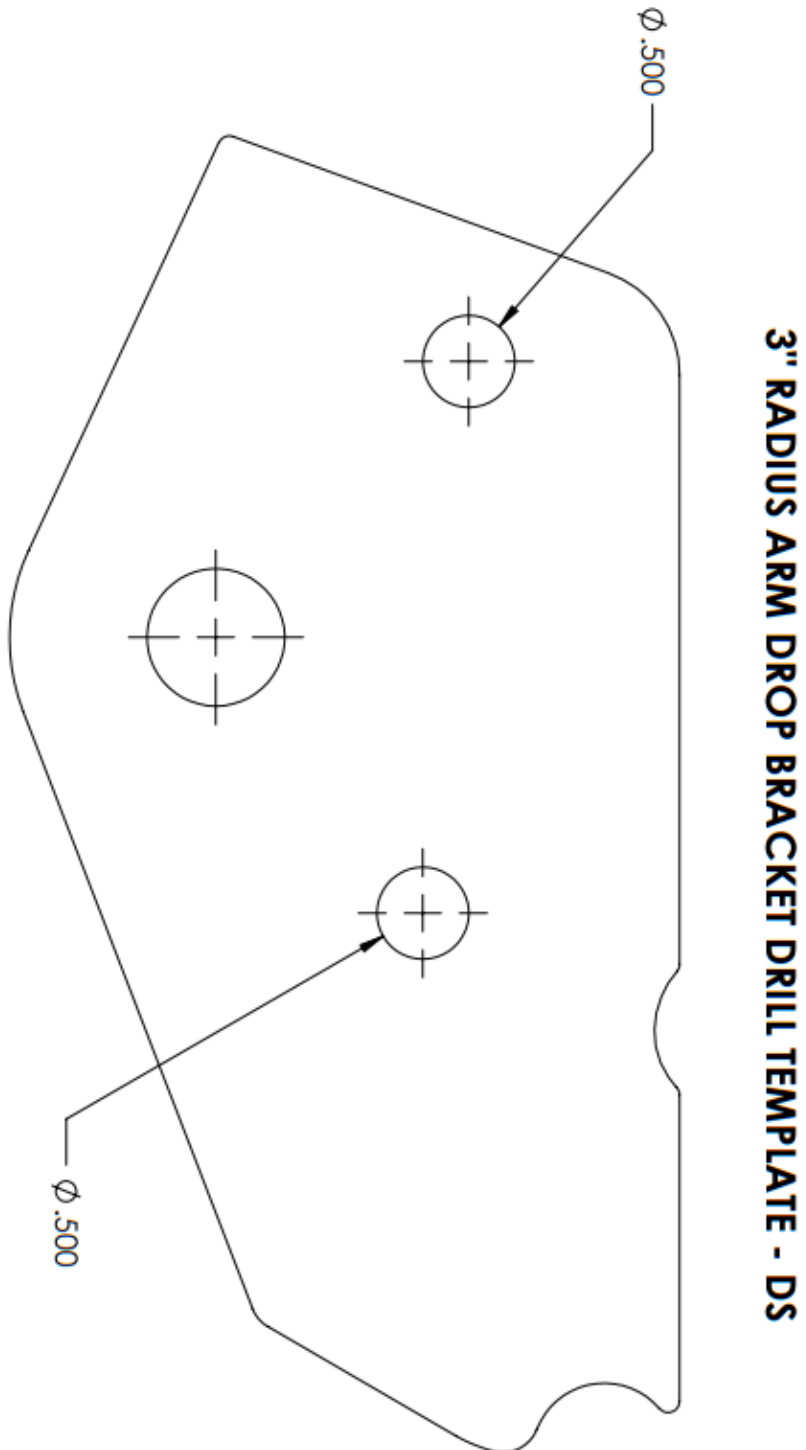


3" RADIUS ARM DROP BRACKET DRILL TEMPLATE - PS





REVISIONS			
REV.	DESCRIPTION	DATE	BY

	<b>A</b>	DO NOT SCALE DRAWING	1/2	Approximate Weight = 1.17 lbs
<b>PROJECT:</b>	MAIL SPEC: ASTM A572 Grade 50			
<b>DESCRIPTION:</b>	Plate - Drill Jig (PS)			
<b>STD. TOLERANCES</b>	<b>PROJECT: 2025+ Rom 3500 Pickup</b>			
XXX ± .040	PART NUMBER: 10037496			
XXX ± .005	DATE:			
FR. DIM. 31/32"				
DRG. 1.30	SHEET 1 OF 1			



REVISIONS			
REV.	DESCRIPTION	DATE	BY

 <b>PROJECTION</b> UNLESS OTHERWISE SPEC. DIMS. IN INCHES	<b>A</b>	DO NOT SCALE DRAWING	1/2"	Approximate Weight = 40.49 lbs	
STD. TOLERANCES X.X, ±.010 X.XX, ±.005 FIN. CALL. ±.002 DESG. 2-3	PROJECT: 2025+ + Rom 3500 Pickup	CHECK FOR CORROSION AND RUST BEFORE INSTALLATION DO NOT COAT WITH ANY OTHER PAINT OR FINISH REMOVAL OF OLD MATERIAL			
PART NUMBER: 10037497	DATE:	SHEET 1 OF 1			

---

# NOTES

---



---

# CONTACT INFORMATION

---

KELDERMAN MANUFACTURING APPRECIATES YOUR BUSINESS. WE STRIVE TO MEET THE NEEDS OF OUR CUSTOMERS BY PROVIDING THE HIGHEST QUALITY PRODUCTS. IF YOU HAVE ANY QUESTIONS CONCERNING OUR PRODUCTS PLEASE CALL OR EMAIL US AT THE FOLLOWING:

2686 HIGHWAY 92  
OSKALOOSA, IOWA 52577

PHONE: [1-800-334-6150](tel:1-800-334-6150)

EMAIL: [INFO@KELDERMAN.COM](mailto:INFO@KELDERMAN.COM)

*kelderman*



## SCAN ME

SCAN QR CODE FOR KELDERMAN WARRANTY PAGE