

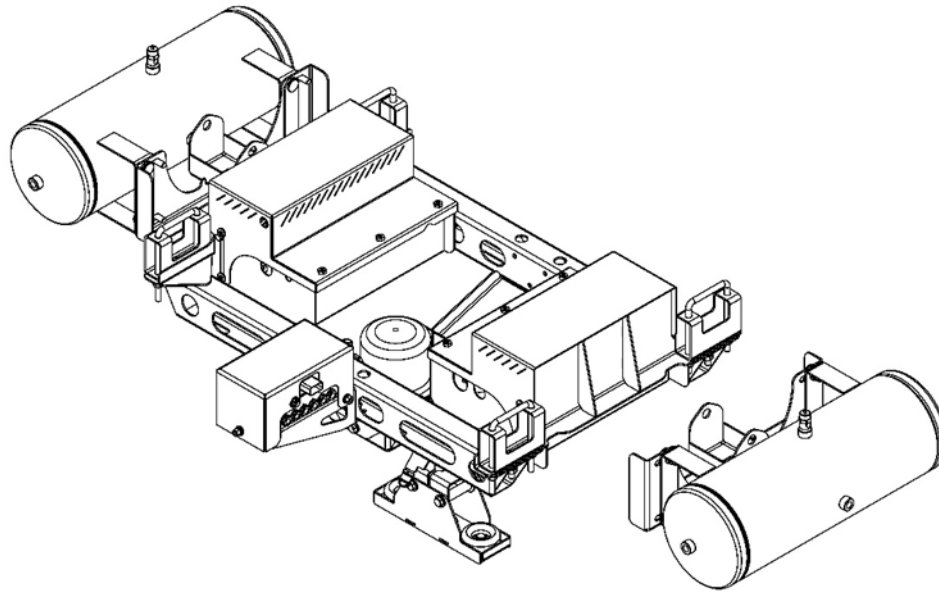
INSTALL INSTRUCTIONS**KIT 10032642****AIR LIFT 3H/3P CONTROLS - AIR COMPRESSOR BOX - DUAL COMPRESSOR - DUAL TANK****2023+ FORD F250/350/450 PICKUP***kelderman*

TABLE OF CONTENTS

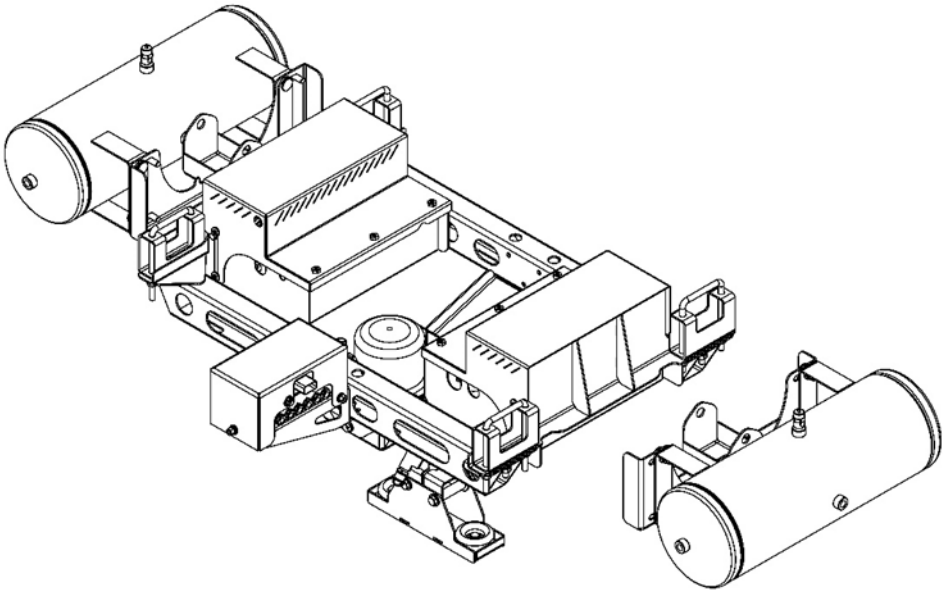
- ♦ KIT NUMBERS.....(3)
- ♦ INTRODUCTION.....(4)
- ♦ SAFETY.....(5)
- ♦ PRODUCT OWNER RESPONSIBILITIES.....(6)
- ♦ ASSEMBLY.....(7-9)
- ♦ NOTES.....(10)
- ♦ CONTACT INFORMATION.....(11)



KIT NUMBERS

- THIS INSTALLATION MANUAL COVERS THE FOLLOWING AIR RIDE KITS.

KIT NUMBER	DESCRIPTION
10032642	KIT - AIR LIFT 3H/3P CONTROLS - AIR COMPRESSOR BOX - DUAL COMPRESSOR - DUAL TANK



INTRODUCTION

IMPORTANT

- ♦ IT IS IMPORTANT THAT THE ENTIRE INSTALLATION INSTRUCTIONS BE READ THOROUGHLY BEFORE PROCEEDING WITH INSTALLATION.
- ♦ IF YOUR KIT WAS ORDERED RAW, OPEN EVERY BOX AND LOCATE ALL PARTS. THERE ARE SEVERAL SMALLER BUSHING PIECES AND BOLTS THAT ARE PACKAGED SEPARATELY INSIDE THE MAIN BOX.

PRODUCT INSTALLER RESPONSIBILITIES

- ♦ INSTALLER IS RESPONSIBLE FOR INSTALLING THIS PRODUCT IN ACCORDANCE WITH KELDERMAN MFG. INC. SPECIFICATIONS AND INSTALLATION INSTRUCTIONS.
- ♦ INSTALLER IS RESPONSIBLE FOR PROVIDING PROPER INSTALLATION OF VEHICLE COMPONENTS AND ATTACHMENTS AS WELL AS REQUIRED OR NECESSARY CLEARANCE FOR SUSPENSION COMPONENTS, AXLES, WHEELS, TIRES, AND OTHER VEHICLE COMPONENTS TO ENSURE A SAFE AND SOUND INSTALLATION AND OPERATION OF THIS PRODUCT.

DEFINITION OF TERMS

- ♦ **WARNING:** INDICATES A POTENTIALLY HAZARDOUS SITUATION WHICH, IF NOT AVOIDED, COULD RESULT IN DEATH OR SERIOUS INJURY.
- ♦ **CAUTION:** A POTENTIAL HAZARDOUS SITUATION MAY RESULT IN PROPERTY DAMAGE.
- ♦ **NOTE:** PROVIDE INFORMATION OR SUGGESTIONS THAT HELP CORRECTLY PERFORM A TASK.
- ♦ **TORQUE:** WHEN ITALICIZED “TORQUE” ALERTS THE INSTALLER TO TIGHTEN FASTENERS TO A SPECIFIED VALUE.

kelderman



SAFETY

YOUR SAFETY AND THE SAFETY OF OTHERS IS VERY IMPORTANT.

- ◆ READ AND UNDERSTAND ALL SAFETY PRECAUTIONS AND INSTRUCTIONS BEFORE INSTALLING THIS PRODUCT.

CAUTION: TRUCKS EQUIPPED WITH PARKING SENSORS OR OTHER LIKE DEVICES.

- ◆ RELOCATION OF THESE DEVICES WILL ALTER THE FIELD OF VIEW. IT IS THE RESPONSIBILITY OF THE OWNER TO UNDERSTAND HOW THESE CHANGES AFFECT THE OPERATION OF THESE SYSTEMS.

WARNING: COMPONENTS UNDER PRESSURE.

- ◆ BLEED ALL PRESSURE FROM THE AIR SYSTEM BEFORE PERFORMING ANY MAINTENANCE OR SERVICE. SERIOUS INJURY COULD OCCUR IF COMPONENTS ARE REMOVED WHILE SYSTEM IS PRESSURIZED.

WARNING: CARELESS INSTALLATION CAN RESULT IN SERIOUS INJURY OR PROPERTY DAMAGE

- ◆ WEAR EYE PROTECTION.
- ◆ DISCONNECT THE BATTERY BEFORE DOING ANY WORK ON THE VEHICLE.
- ◆ WORK ON FLAT LEVEL GROUND.
- ◆ ENSURE TRUCK IS PROPERLY SUPPORTED BY JACK STANDS. NEVER WORK UNDER A VEHICLE SUPPORTED ONLY BY HYDRAULIC JACKS.
- ◆ TAKE PRECAUTIONS WHEN LIFTING PRODUCT. DUE TO THE SIZE AND WEIGHT OF THIS PRODUCT TWO PEOPLE ARE RECOMMENDED FOR INSTALLATION.
- ◆ NEVER WORK DIRECTLY UNDER THE PRODUCT UNTIL IT HAS BEEN SECURELY FASTENED TO THE VEHICLE.
- ◆ AVOID SHARP, HOT, AND MOVING COMPONENTS WHEN ROUTING ELECTRICAL CABLES AND AIR LINES.
- ◆ IF DRILLING, INSPECT BOTH SIDES OF THE SURFACE AND REMOVE/RELOCATE ANY OBJECTS LOCATED IN THE WAY.
- ◆ ENSURE ALL BOLTS ARE PROPERLY TIGHTENED BEFORE DRIVING.



PRODUCT OWNER RESPONSIBILITIES

- ◆ PRODUCT OWNER IS SOLELY RESPONSIBLE FOR PRE-OPERATION INSPECTION, PERIODIC INSPECTIONS, MAINTENANCE, AND USE OF THE PRODUCT AS SPECIFIED BY KELDERMAN MFG. INC. OF PARTICULAR IMPORTANCE IS THE RE-TORQUE OF FASTENERS.
- ◆ THIS RE-TORQUE MUST BE PERFORMED WITHIN 2500 MILES OF THIS PRODUCT BEING PUT INTO SERVICE.
- ◆ PRODUCT OWNER IS RESPONSIBLE FOR “*DOWN TIME*” EXPENSES, CARGO DAMAGE, AND ALL BUSINESS COSTS AND LOSSES RESULTING FROM A WARRANTABLE FAILURE.

SERVICE INTERVALS**FIRST 2,500 MILES**

- ◆ CHECK FOR ANY LOOSE OR RUBBING HOSES AND WIRES.
- ◆ RE-TORQUE ALL HARDWARE.

EVERY 30,000 MILES

- ◆ CHECK FOR ANY LOOSE OR RUBBING HOSES AND WIRES.
- ◆ RE-TORQUE ALL HARDWARE.

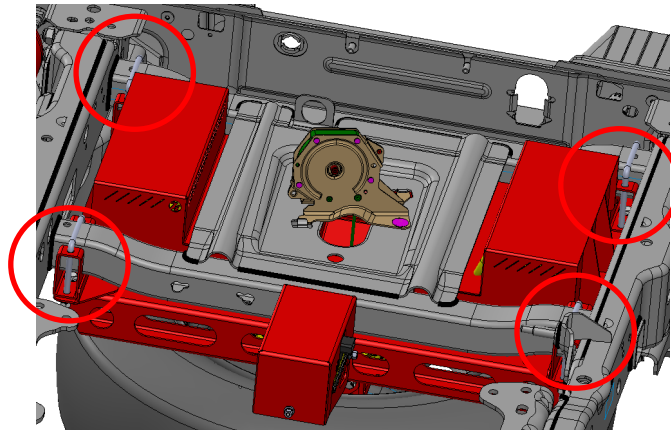
kelderman

ASSEMBLY

1) First, remove the rear bumper and bed. This will give you the room to start the install on the controls box.

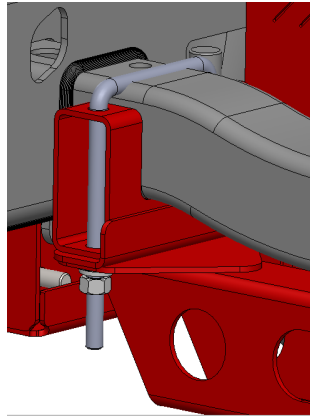


2) Next, you want to start by lifting the controls box into the truck using a jack or lift. The Mounts (10013134) should be bolted to the four contact pads to hold the frame using 3/8" bolts. You want to use the middle hole for the placement of the bolt. You may want to have another person here to assist with the install. When lifting the box into its mounting position the fitment is tight, may need to move wires and make sure your not hitting other parts of the truck.

*kelderman*

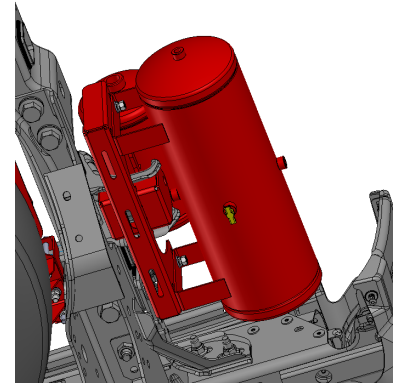
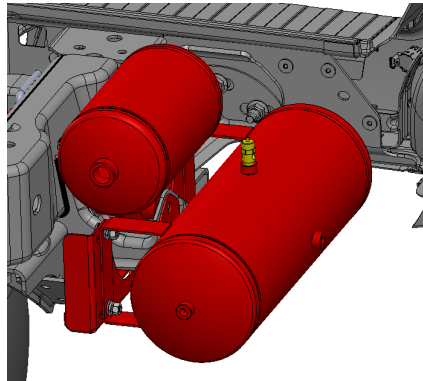
ASSEMBLY

- 3) Once the box is set up onto the frame, use the four 3/8" U-bolts to fully attach the controls box to the frame on all four corners.



Note: Some of the next steps are done along side installing a Kelderman Air Ride. These steps are noted in the kits specific install instruction. This install will pertain to the controls box ONLY.

- 4) The next step will be installing the 3 galloon tank. These install at the same time as our Accumulator tanks. You will want to use the same bolt that attached the accumulator tank to the perch mount. Our bracket will fit on the underside of the perch mount whereas the accumulator goes above and in-between it. Then You will use the (4) four 3/8" bolts to bolt the tank to the bracket. Then, do the same on the other side of the truck.

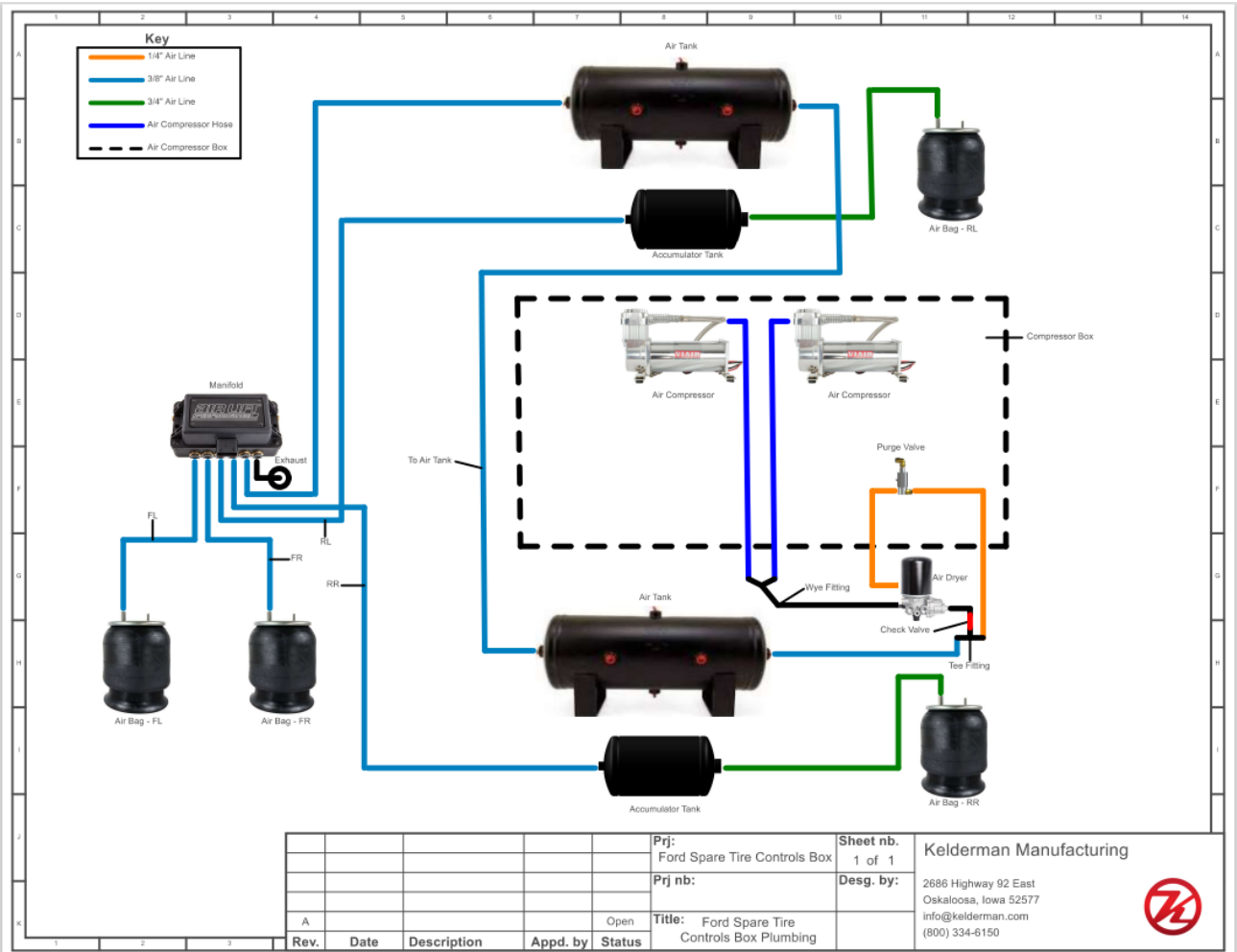


kelderman



ASSEMBLY

5) After installing the two tanks onto the perch mount, plumbing the system will be the next step.

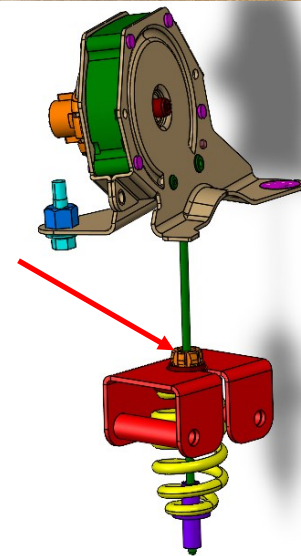


ASSEMBLY

6) This controls box is designed so that the spare tire can fit in the factory location. If you have a Single Rear Wheel Truck, then the factory mount will be used. If you have a Dual Rear Wheel Truck, you will use the manufactured part provided. To install this, start off by cutting the factory bracket that holds the spare tire. Then, fit our bracket around the rubber stopper that held the bracket originally.



Note: use (10036838) to fit around rubber stopper using the cut out guide in the part.



DRW
ONLY

kelderman

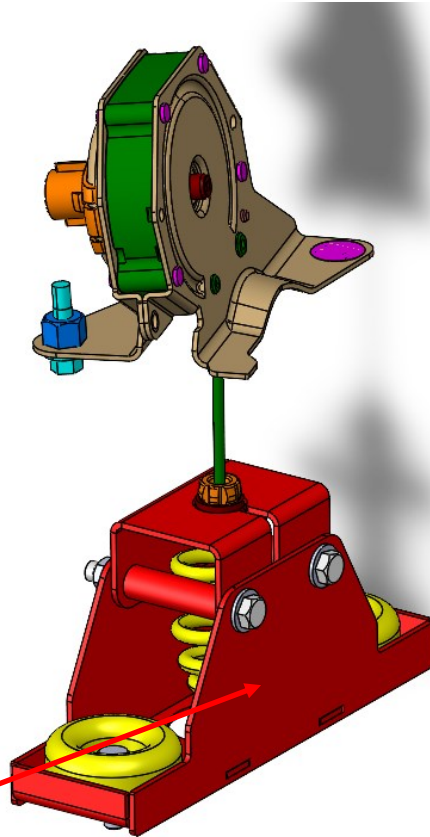


ASSEMBLY

7) After adding (10036838) Bracket, locate (10036842). First, find the rubber bumper pads that will bolt to the bracket using 3/8" -X 1-1/4" bolts and hardware. This will fit around the first bracket installed and use two 3/8" x 3-1/2" bolts to mount it to the spare tire winch. Once installed you are able to reinstall the factory tire and winch it snug into the mount.



Rubber Stops



(10036842)

*kelderman*

NOTES



CONTACT INFORMATION**SCAN ME**

**SCAN QR CODE
FOR KELDERMAN
WARRANTY PAGE**

KELDERMAN MANUFACTURING APPRECIATES YOUR BUSINESS. WE STRIVE TO MEET THE NEEDS OF OUR CUSTOMERS BY PROVIDING THE HIGHEST QUALITY PRODUCTS. IF YOU HAVE ANY QUESTIONS CONCERNING OUR PRODUCTS PLEASE CALL OR EMAIL US AT THE FOLLOWING:

**2686 HIGHWAY 92
OSKALOOSA, IOWA 52577**

**PHONE: 1-800-334-6150
EMAIL: INFO@KELDERMAN.COM**

**SEE YOUTUBE PAGE FOR ADDITIONAL VIDEOS:
HTTPS://WWW.YOUTUBE.COM/USER/KELDERMANTRUCKS**

kelderman