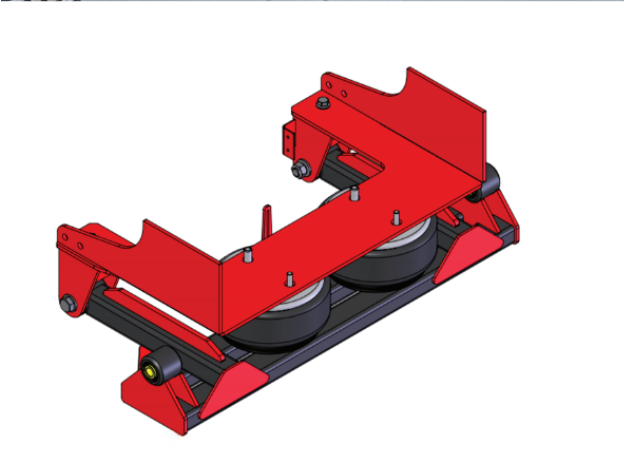


CHECK OUT OUR LATEST PRODUCT OFFERINGS!



2023+ FORD SUPER DUTY COMMANDER GRILLE GUARD

- Enhance the protection and lighting capabilities of your Kelderman Alpha Series Front Bumper by incorporating the Commander Grille Guard onto the front.
- Made from heavy-duty steel and features a rugged, aggressive design, and engineered to provide maximum protection.



GENERAL MEDIUM DUTY 2-STAGE REAR AIR SUSPENSION

- This air suspension utilizes Kelderman's 2-Stage Design that retains the existing leaf spring suspension for carrying capacity but allows you to give yourself an air suspension quality ride.
- This framework allows for 4" of additional travel from the leaf springs, creating a much smoother ride for the vehicle and driver.



2023+ FORD F-250/350/450 4X4 2-3" COMPLETE AIR SUSPENSION LIFT KIT

- This kit gives the all-new Super Duty the smooth ride, towing ability, and adjustable height that Kelderman has delivered to the lift kit market for 20+ years.
- Designed ride height is 2-3" and is adjustable down to 1" below stock height when deflated and up to an approximate 6" lift when fully inflated.



Bigger. Bolder. Better.

CHECK OUT OUR LATEST PRODUCT OFFERINGS!



2015+ MERCEDES-BENZ SPRINTER VAN 2500 2-STAGE REAR AIR SUSPENSION

- By attaching our unique 2-Stage Rear Air Suspension Framework to the rear leaf spring shackle to provide additional travel for the leaf springs, you will have an improved riding and driving experience in your Sprinter.
- Provides 3-4" of additional travel that the chassis did not have before resulting in a smoother ride.



2023+ FORD SUPER DUTY FABRICATED RADIUS ARMS

- These adjustable radius arms improve the performance and look of your new Ford, and allow for you to adjust the front axle position for optimum alignment along with your Kelderman Air Suspension System.



2008-2023 PETERBILT 389 FRONT AIR LEAF SUSPENSION

- Kelderman's all-new Front Leaf Air Suspension System is meticulously designed to surpass the limitations of the factory leaf spring option.
- Supplied height control valves tap into your truck's existing air supply, allowing the suspension to automatically inflate/deflate as needed.



Bigger. Bolder. Better.