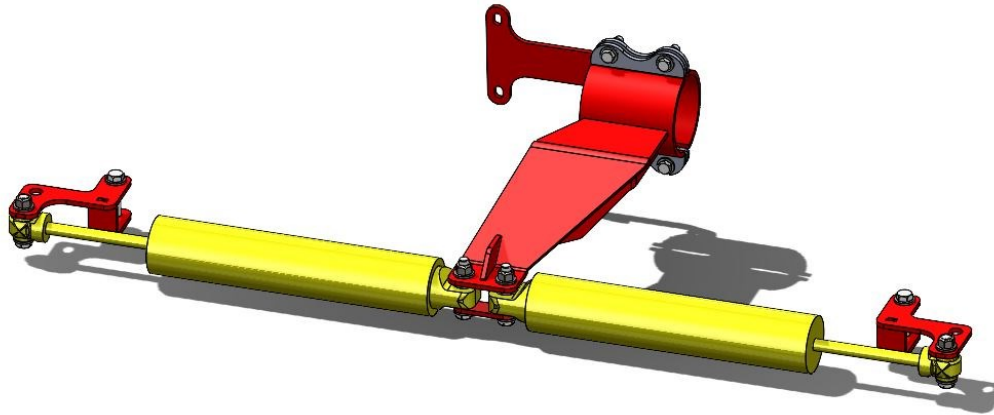


INSTALL INSTRUCTIONS

KIT #10007147

KIT - STEERING STABILIZER -
DUAL SHOCK :

2019+ GM
4500/5500/6500 - CC -
4WD - FRONT



kelderman



TABLE OF CONTENTS

♦ KIT NUMBERS.....	(3)
♦ INTRODUCTION.....	(4)
♦ SAFETY.....	(5)
♦ PRODUCT OWNER RESPONSIBILITIES.....	(6)
♦ KIT INSTALLATION.....	(7-8)
♦ PARTS KEY.....	(9)
♦ NOTES.....	(10)
♦ CONTACT INFORMATION.....	(11)

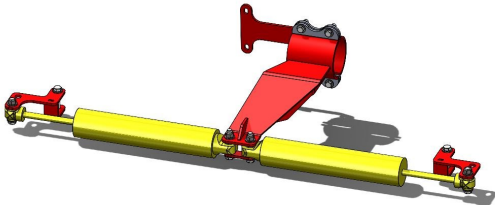
kelderman



KIT NUMBERS

- THIS INSTALLATION MANUAL COVERS THE FOLLOWING KITS

KIT NUMBER	DESCRIPTION
10007147	STEERING STABILIZER - DUAL SHOCK: 2019+ GM



INTRODUCTION

IMPORTANT

- ♦ IT IS IMPORTANT THAT THE ENTIRE INSTALLATION INSTRUCTIONS BE READ THOROUGHLY BEFORE PROCEEDING WITH INSTALLATION.
- ♦ IF YOUR KIT WAS ORDERED RAW, OPEN EVERY BOX AND LOCATE ALL PARTS. THERE ARE SEVERAL SMALLER BUSHING PIECES AND BOLTS THAT ARE PACKAGED SEPARATELY INSIDE THE MAIN BOX.

PRODUCT INSTALLER RESPONSIBILITIES

- ♦ INSTALLER IS RESPONSIBLE FOR INSTALLING THIS PRODUCT IN ACCORDANCE WITH KELDERMAN MFG. INC. SPECIFICATIONS AND INSTALLATION INSTRUCTIONS.
- ♦ INSTALLER IS RESPONSIBLE FOR PROVIDING PROPER INSTALLATION OF VEHICLE COMPONENTS AND ATTACHMENTS AS WELL AS REQUIRED OR NECESSARY CLEARANCE FOR SUSPENSION COMPONENTS, AXLES, WHEELS, TIRES, AND OTHER VEHICLE COMPONENTS TO ENSURE A SAFE AND SOUND INSTALLATION AND OPERATION OF THIS PRODUCT.

DEFINITION OF TERMS

- ♦ **WARNING:** INDICATES A POTENTIALLY HAZARDOUS SITUATION WHICH, IF NOT AVOIDED, COULD RESULT IN DEATH OR SERIOUS INJURY.
- ♦ **CAUTION:** A POTENTIAL HAZARDOUS SITUATION MAY RESULT IN PROPERTY DAMAGE.
- ♦ **NOTE:** PROVIDE INFORMATION OR SUGGESTIONS THAT HELP CORRECTLY PERFORM A TASK.
- ♦ **TORQUE:** WHEN ITALICIZED "TORQUE" ALERTS THE INSTALLER TO TIGHTEN FASTENERS TO A SPECIFIED VALUE.



SAFETY

YOUR SAFETY AND THE SAFETY OF OTHERS IS VERY IMPORTANT.

- ◆ READ AND UNDERSTAND ALL SAFETY PRECAUTIONS AND INSTRUCTIONS BEFORE INSTALLING THIS PRODUCT.

CAUTION: TRUCKS EQUIPPED WITH PARKING SENSORS OR OTHER LIKE DEVICES.

- ◆ RELOCATION OF THESE DEVICES WILL ALTER THE FIELD OF VIEW. IT IS THE RESPONSIBILITY OF THE OWNER TO UNDERSTAND HOW THESE CHANGES AFFECT THE OPERATION OF THESE SYSTEMS.

WARNING: COMPONENTS UNDER PRESSURE.

- ◆ BLEED ALL PRESSURE FROM THE AIR SYSTEM BEFORE PERFORMING ANY MAINTENANCE OR SERVICE. SERIOUS INJURY COULD OCCUR IF COMPONENTS ARE REMOVED WHILE SYSTEM IS PRESSURIZED.

WARNING: CARELESS INSTALLATION CAN RESULT IN SERIOUS INJURY OR PROPERTY DAMAGE

- ◆ WEAR EYE PROTECTION.
- ◆ DISCONNECT THE BATTERY BEFORE DOING ANY WORK ON THE VEHICLE.
- ◆ WORK ON FLAT LEVEL GROUND.
- ◆ ENSURE TRUCK IS PROPERLY SUPPORTED BY JACK STANDS. NEVER WORK UNDER A VEHICLE SUPPORTED ONLY BY HYDRAULIC JACKS.
- ◆ TAKE PRECAUTIONS WHEN LIFTING PRODUCT. DUE TO THE SIZE AND WEIGHT OF THIS PRODUCT TWO PEOPLE ARE RECOMMENDED FOR INSTALLATION.
- ◆ NEVER WORK DIRECTLY UNDER THE PRODUCT UNTIL IT HAS BEEN SECURELY FASTENED TO THE VEHICLE.
- ◆ AVOID SHARP, HOT, AND MOVING COMPONENTS WHEN ROUTING ELECTRICAL CABLES AND AIR LINES.
- ◆ IF DRILLING, INSPECT BOTH SIDES OF THE SURFACE AND REMOVE/RELOCATE ANY OBJECTS LOCATED IN THE WAY.
- ◆ ENSURE ALL BOLTS ARE PROPERLY TIGHTENED BEFORE DRIVING.



PRODUCT OWNER RESPONSIBILITIES

- ◆ PRODUCT OWNER IS SOLELY RESPONSIBLE FOR PRE-OPERATION INSPECTION, PERIODIC INSPECTIONS, MAINTENANCE, AND USE OF THE PRODUCT AS SPECIFIED BY KELDERMAN MFG. INC. OF PARTICULAR IMPORTANCE IS THE RE-TORQUE OF FASTENERS.
- ◆ THIS RE-TORQUE MUST BE PERFORMED WITHIN 2500 MILES OF THIS PRODUCT BEING PUT INTO SERVICE.
- ◆ PRODUCT OWNER IS RESPONSIBLE FOR “*DOWN TIME*” EXPENSES, CARGO DAMAGE, AND ALL BUSINESS COSTS AND LOSSES RESULTING FROM A WARRANTABLE FAILURE.

SERVICE INTERVALS**FIRST 2,500 MILES**

- ◆ CHECK FOR ANY LOOSE OR RUBBING HOSES AND WIRES.
- ◆ RE-TORQUE ALL HARDWARE.

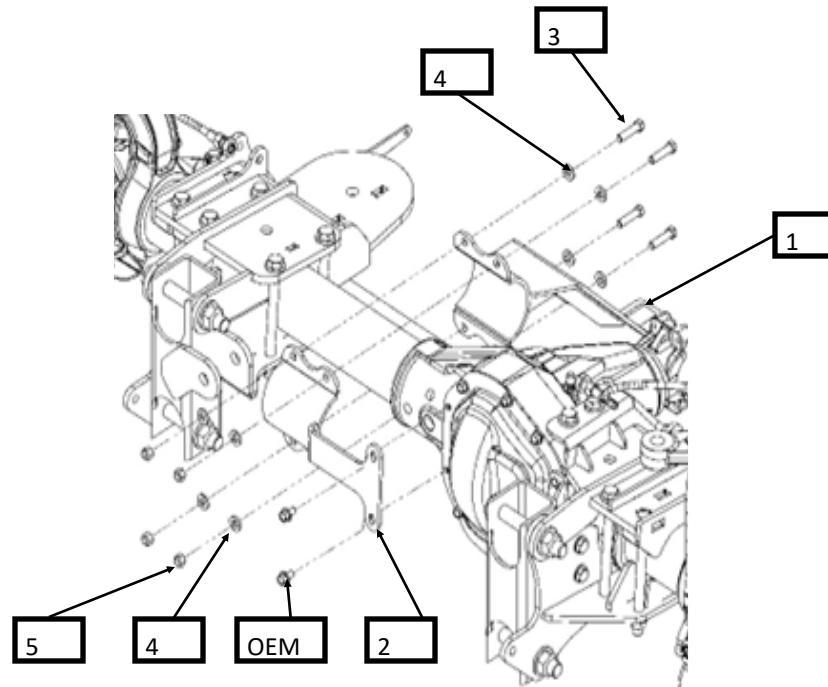
EVERY 30,000 MILES

- ◆ CHECK FOR ANY LOOSE OR RUBBING HOSES AND WIRES.
- ◆ RE-TORQUE ALL HARDWARE.



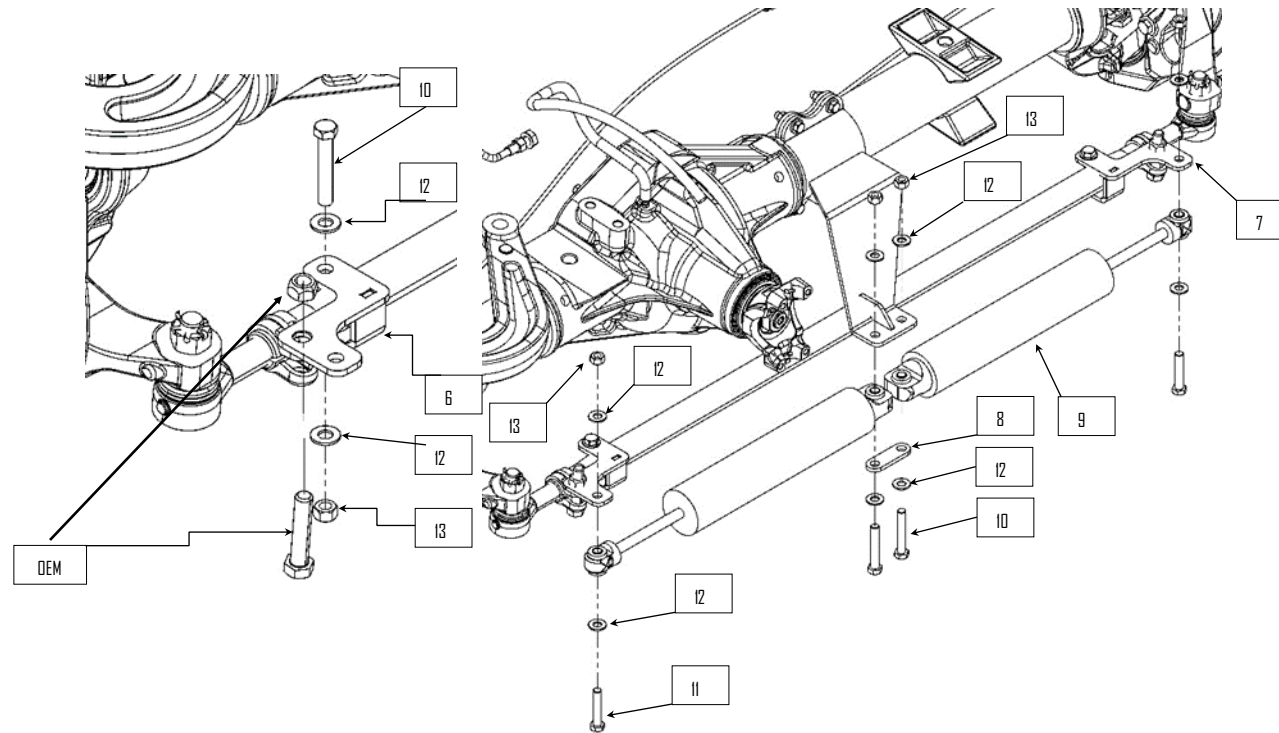
ASSEMBLY

1) you will need to remove the skid plate to access the Differential. Fasten the steering stabilizer mount (1) and clamp (2) to the axle. Use OEM differential cover bolts to position the clamp (2). Use 7/16" hardware (3, 4, & 5) to fasten around the

*kelderman*

ASSEMBLY

2) Install the tie rod brackets (6 & 7) use the OEM pinch bolts and 1/2" hardware (10, 12, & 13).



3) Fasten the Raptor monotube *shocks* (9) to the tie rod brackets (6 & 7) and the stabilizer mount (1) using 1/2" hardware (10, 11, 12, & 13).

kelderman

ASSEMBLY

12. Install Steering Stabilizer Shock Mounts (#10013958-DS & 10013956-PS). Fasten to steering link bar with 1/2"-20 x 3" bolts and use factory bolt for pinch plate.

FOR 2WD Trucks!



1/2"-20 x 3" bolt



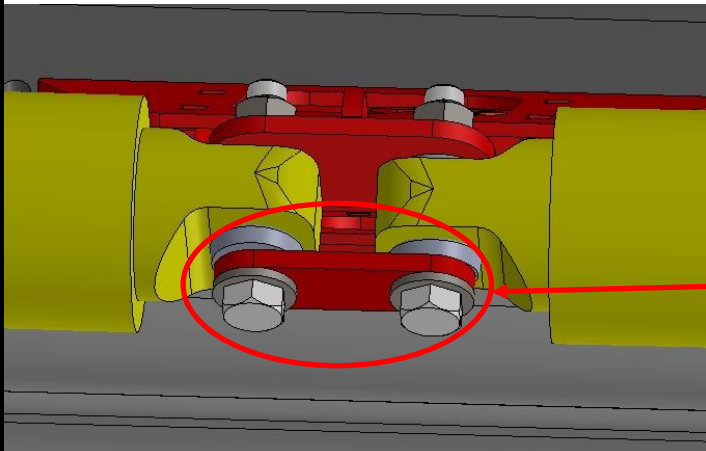
Rear of truck

kelderman



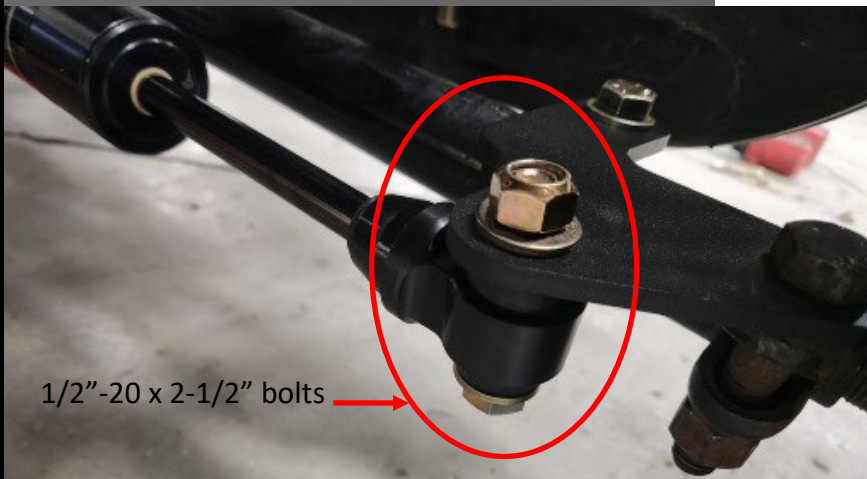
ASSEMBLY

13. Install Steering Stabilizer Shocks (#10094-LH/RH or #985-24-068) and Shock Strap (#20227). Fasten shocks with 1/2"-20 x 3" bolts in the center and 1/2"-20 x 2-1/2" bolts on the outsides.



Shock Strap

1/2"-20 x 2-1/2" bolts



1/2"-20 x 2-1/2" bolts

*kelderman*

PARTS KEY

1	10007026	WELDMENT - STEERING STABILIZER MOUNT
2	10007033	WELDMENT - STEERING STABILIZER CLAMP
3	13413	HEX BOLT: 7/16"-20 x 1-3/4"
4	13023	FLAT WASHER: 7/16"
5	13123	LOCK NUT: 7/16"-20
6	10007034	WELDMENT - STABILIZER TIE ROD BRACKET (DS)
7	10007037	WELDMENT - STABILIZER TIE ROD BRACKET (PS)
8	20227	PLATE - 1/4" - STABILIZER SHOCK STRAP
9	10003382	RAPTOR SHOCK - MONOTUBE TWIN EYELET
10	12021	HEX BOLT: 1/2"-20 x 3"
11	12017	HEX BOLT: 1/2"-20 x 2-1/2"
12	13024	FLAT WASHER: 1/2"
13	13124	LOCK NUT: 1/2"-20


 kelderman


NOTES

kelderman



CONTACT INFORMATION



SCAN ME

SCAN QR CODE
FOR KELDERMAN
WARRANTY PAGE

KELDERMAN MANUFACTURING APPRECIATES YOUR BUSINESS. WE STRIVE TO MEET THE NEEDS OF OUR CUSTOMERS BY PROVIDING THE HIGHEST QUALITY PRODUCTS. IF YOU HAVE ANY QUESTIONS CONCERNING OUR PRODUCTS PLEASE CALL OR EMAIL US AT THE FOLLOWING:

**2686 HIGHWAY 92
OSKALOOSA, IOWA 52577**

**PHONE: 1-800-334-6150
EMAIL: INFO@KELDERMAN.COM**

SEE YOUTUBE PAGE FOR ADDITIONAL VIDEOS:
HTTPS://WWW.YOUTUBE.COM/USER/KELDERMANTRUCKS

kelderman

