

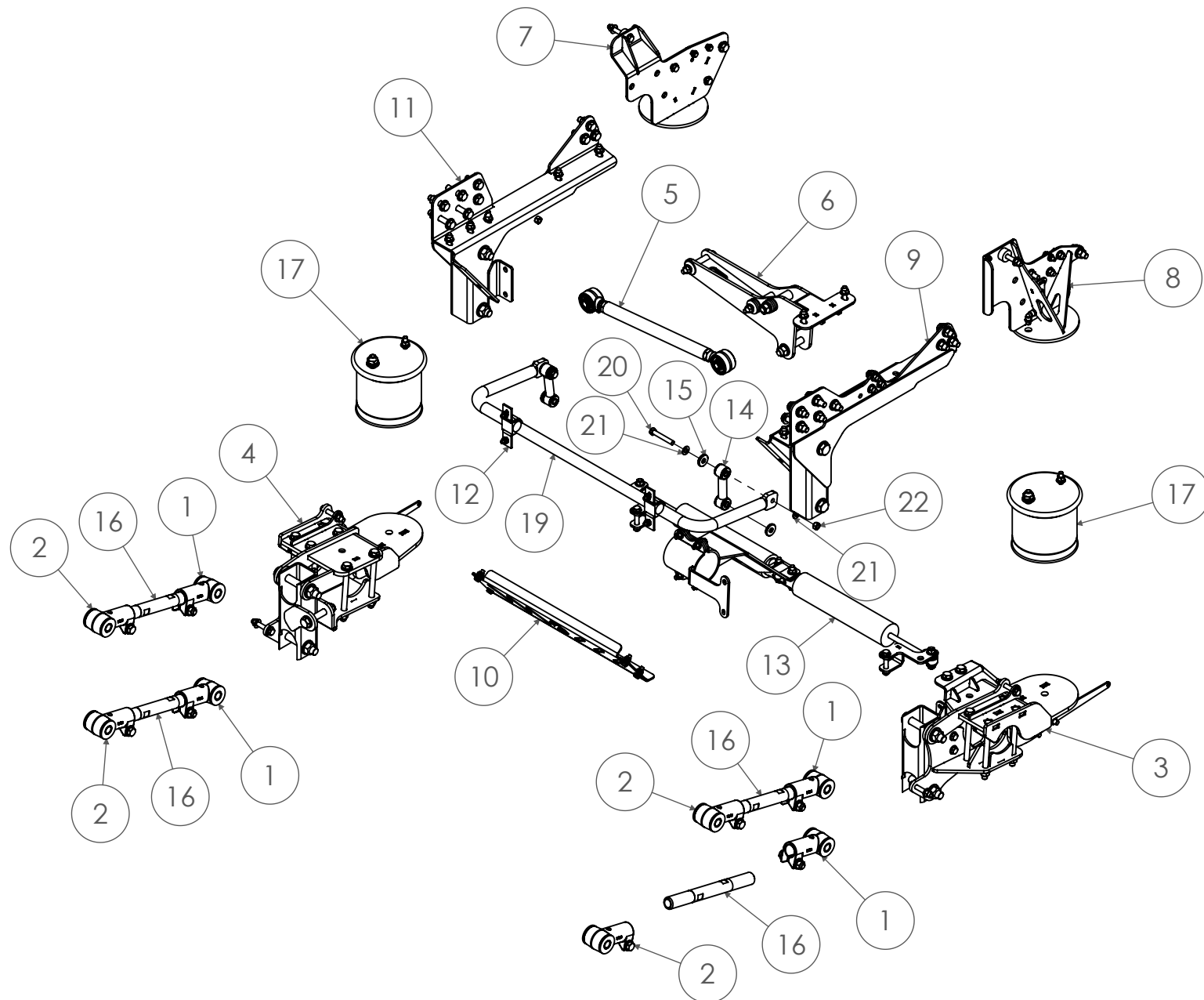




ITEM NO.	PART NUMBER	DESCRIPTION	QTY.
<i>Assemblies</i>			
1	18498	Assembly - Cast Knuckle 10006	4
2	18499	Assembly - Cast Knuckle 10005 - 1" ID	4
3	10006749	Assembly - DS Trailing Arm & Lower Bag Mount	1
4	10006754	Assembly - DS Trailing Arm & Lower Bag Mount	1
5	10006927	Assembly - Panhard Bar - 17" Bar Length - 3/4" Bolt	1
6	10007137	Assembly - PHB Crossmember Bracket	1
7	10007138	Assembly - PS Upper Bag Plate	1
8	10007141	Assembly - DS Upper Bag Plate	1
9	10007142	Assembly - DS Trailing Arm Side Plate	1
10	10007144	Assembly - Side Plate Crossmember	1
11	10007145	Assembly - PS Trailing Arm Side Plate	1
12	10007146	Assembly - Sway Bar D-Ring - 4" Bolt Centers	2
13	10007147	Assembly - Steering Stabilizer	1
14	10007156	Assembly - End Link - 4-1/2" CTC	2
<i>Parts</i>			
15	11551	Plate - 1/4" - 1.5"OD x .53" ID x 1/4"	4
16	52114.5	14.5" Trailing Arm Bar	4
<i>Purchased Parts</i>			
17	80012-5770	Firestone 5770	2
18	80168	KV2L11-35s - 90° Elbow, 3/8" x 1/4-18 NPT	2
19	80288	Purchased - Sway Bar - 1-3/8" Dia	1
<i>Hardware</i>			
20	12023	Bolt - 1/2" - 20 X 3 1/4" Gr. 8 YZ	2
21	13024	Washer - 1/2" Flat SAE Washer	4
22	13124	Lock Nut - 1/2"-20 Gr. 8	2

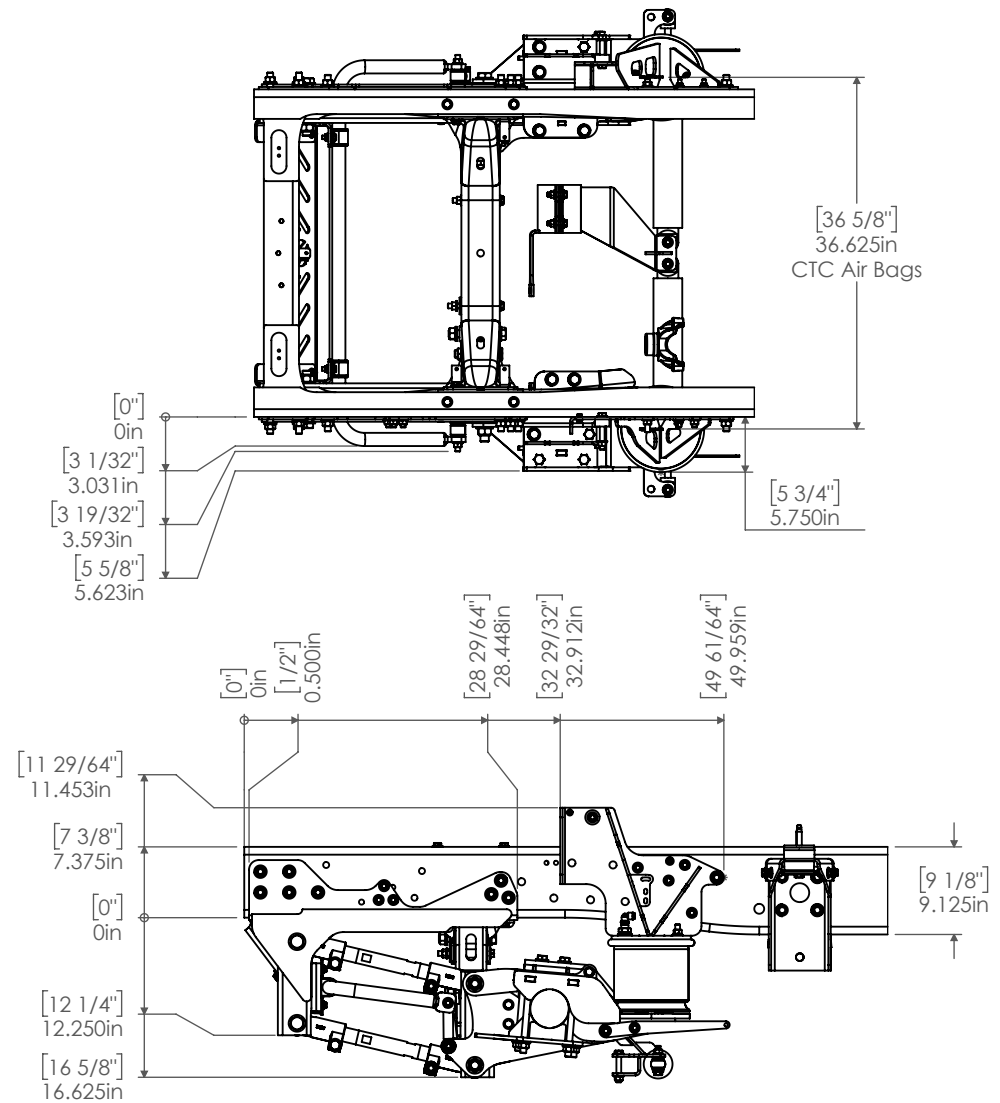
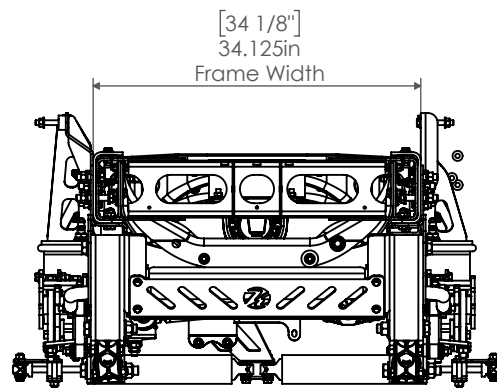
**Suspension Shock** - Raptor P/N: 10135 - Kelderman P/N:  
2.0 Remote Reservoir Shocks - Requires Piggy Back Clamps



**Steering Stabilizer Shock** - Raptor P/N: 10094 - Kelderman P/N: 10003382  
2.0 Monotube

								<b>A</b>	DO NOT SCALE DRAWING	1:100	Approximate Weight = lbs		
							3RD ANGLE PROJECTION	MATL SPECS:					<div>NOTICE: THIS DOCUMENT AND ITS CONTENTS ARE THE PROPERTY OF KELDERMAN MFG. NO USE OR COPIES MAY BE MADE WITHOUT WRITTEN PERMISSION FROM KELDERMAN.</div>
							UNLESS OTHERWISE SPEC. DIMNS. IN INCHES STD. TOLERANCES X.X ±.060 X.XX ±.030 X.XXX ±.010 FRAC.DIM. ±1/32" Deg. ±.5°	DESCRIPTION: <b>Kit - 2019+ GM 4500/5500/6500 - CC - 4-Link Front - Stock Height</b>					
								PROJECT: <b>2019+ GM 4500/5500/6500 - CC - 4-Link Front - Stock Height</b>					
								PART NUMBER: <b>10006664</b>					
REV	ECN	CHANGE DESCRIPTION	CHANGE BY	DATE				DESIGN BY: <b>Troy Anderson</b>	DATE: <b>4/3/2020</b>			SHEET 1 OF 5	



							<b>A</b>	DO NOT SCALE DRAWING	1:100	Approximate Weight = lbs		
						3RD ANGLE PROJECTION	MATL SPECS:					<div>NOTICE: THIS DOCUMENT AND ITS CONTENTS ARE THE PROPERTY OF KELDERMAN MFG. NO USE OR COPIES MAY BE MADE WITHOUT WRITTEN PERMISSION FROM KELDERMAN.</div>
						UNLESS OTHERWISE SPEC.	DESCRIPTION: <b>Kit - 2019+ GM 4500/5500/6500 - CC - 4-Link Front - Stock Height</b>					
						DIMS. IN INCHES	PROJECT: <b>2019+ GM 4500/5500/6500 - CC - 4-Link Front - Stock Height</b>					
						STD. TOLERANCES	PART NUMBER: <b>10006664</b>					
						X.X ±.060						
						X.XX ±.030						
						X.XXX ±.010						
						FRAC.DIM. ±1/32"						
						Deg. ±.5°						
REV	ECN	CHANGE DESCRIPTION	CHANGE BY	DATE			DESIGN BY: <b>Troy Anderson</b>		DATE: <b>4/3/2020</b>		SHEET 2 OF 5	




							<b>A</b>	DO NOT SCALE DRAWING	1:100	Approximate Weight = lbs		
						3RD ANGLE PROJECTION	MATL SPECS:					
						UNLESS OTHERWISE SPEC. DIMNS. IN INCHES STD. TOLERANCES	DESCRIPTION: <b>KH - 2019+ GM 4500/5500/6500 - CC - 4-Link Front - Stock Height</b>					
						X.X ±.060	PROJECT:					
						X.XX ±.030	<b>2019+ GM 4500/5500/6500 - CC - 4-Link Front - Stock Height</b>					
						X.XXX ±.010	PART NUMBER: <b>10006664</b>					
						FRAC.DIM. ±1/32"	NOTICE: THIS DOCUMENT AND ITS CONTENTS ARE THE PROPERTY OF KELDERMAN MFG. NO USE OR COPIES MAY BE MADE WITHOUT WRITTEN PERMISSION FROM KELDERMAN					
						Deg. ± .5°	DESIGN BY: <b>Troy Anderson</b>					
							DATE: <b>4/3/2020</b>					
REV	ECN	CHANGE DESCRIPTION	CHANGE BY	DATE							<b>SHEET 3 OF 5</b>	

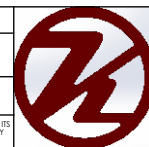
Technical drawing of the front view of the 1000 Series Baghouse. The drawing shows a large cylindrical baghouse with a central circular opening. Dimensions are provided for the overall width, height, and depth. The overall width is 32.286in (32 9/32"). The overall height is 5.898in (5 57/64"). The depth is 4.000in (4"). The drawing also shows various mounting points, bolts, and internal components.

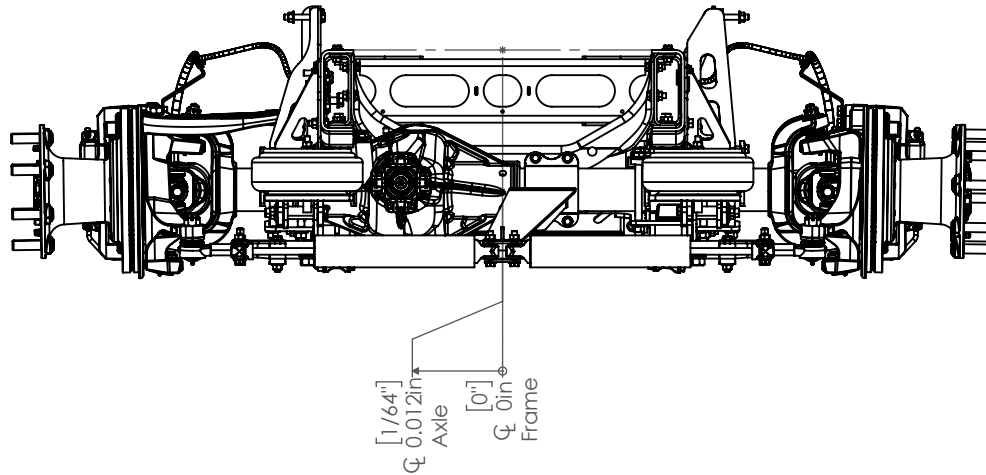
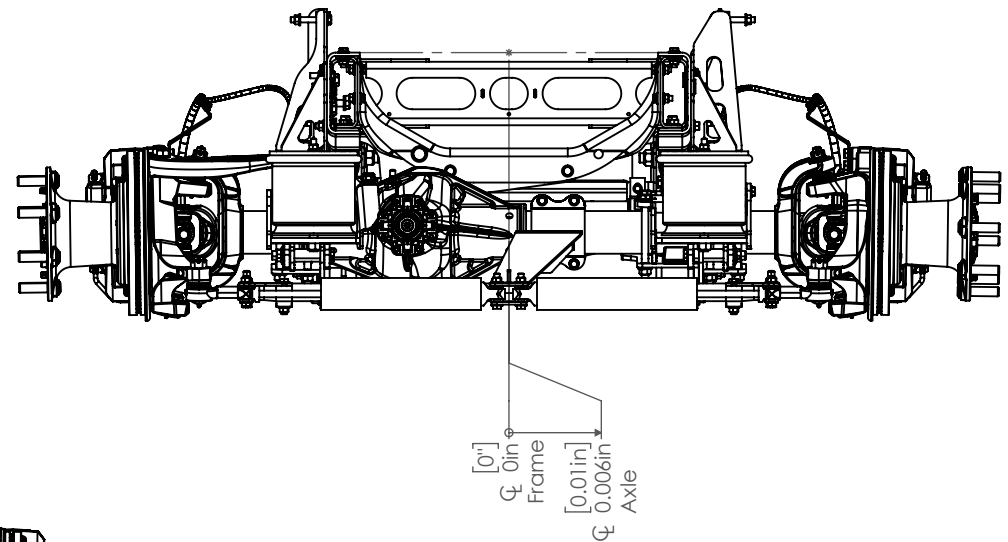
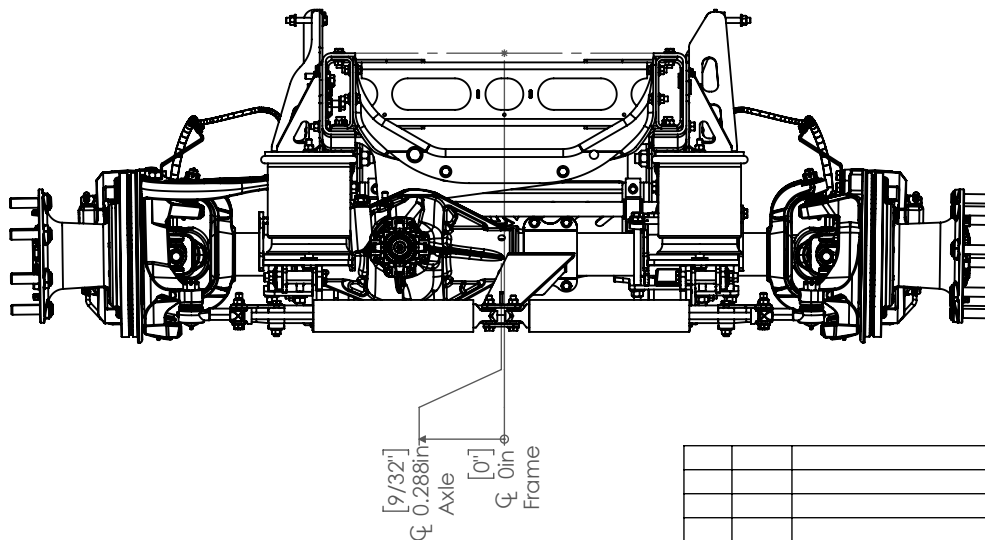
Technical drawing of the front view of the 1000 Series Baghouse. The drawing shows a large cylindrical baghouse with a central circular access door. Dimensions are provided for the overall width, height, and depth. The width is 31 3/16 inches (31.194 inches). The height is 11 41/64 inches (11.645 inches). The depth is 9 3/4 inches (9.750 inches). The drawing also shows various mounting points, bolts, and a baghouse support structure.



Technical drawing of the rear view of the machine. Dimensions are indicated as follows:

- Overall width:  $[31\ 25/32"]$  31.788in
- Bag height:  $[7\ 3/4"]$  7.747in
- Distance from the left side to the center of the bag:  $[9\ 41/64"]$  9.642in

									<b>A</b>	DO NOT SCALE DRAWING	1:100	Approximate Weight = lbs	 <b>SHEET 4 OF 5</b>	
								3RD ANGLE PROJECTION	MATL SPECS:					
								UNLESS OTHERWISE SPEC.	DESCRIPTION: <b>Klt - 2019+ GM 4500/5500/6500 - CC - 4-Link Front - Stock Height</b>					
								DIM'S IN INCHES	PROJECT: <b>2019+ GM 4500/5500/6500 - CC - 4-Link Front - Stock Height</b>					
								STD. TOLERANCES X.X ± .060 X.XX ± .030 X.XXX ± .010 FRAC.DIM. ± 1/32" Deg. ± 5°	PART NUMBER: <b>10006664</b>					NOTICE: THIS DOCUMENT AND ITS CONTENTS ARE THE PROPERTY OF KLEIDERMAN MFG. DO NOT REPRODUCE OR COPIES MAY BE MADE WITHOUT WRITTEN PERMISSION FROM KLEIDERMAN
REV	ECN	CHANGE DESCRIPTION	CHANGE BY	DATE					DESIGN BY: <b>Troy Anderson</b>	DATE: <b>4/3/2020</b>				



**Air Dumped - Bag Height 4.0"****Kelderman Ride Height - Bag Height 7.75"****Full Droop - Bag Height 9.75"**

							<b>A</b>	DO NOT SCALE DRAWING	1:100	Approximate Weight = lbs		
						3RD ANGLE PROJECTION	MATL SPECS:					
						UNLESS OTHERWISE SPEC.	DESCRIPTION: <b>KH - 2019+ GM 4500/5500/6500 - CC - 4-Link Front - Stock Height</b>					
						DIMNS. IN INCHES	PROJECT: <b>2019+ GM 4500/5500/6500 - CC - 4-Link Front - Stock Height</b>					
						STD. TOLERANCES	PART NUMBER: <b>10006664</b>					
						X.X ±.060	NOTICE: THIS DOCUMENT AND ITS CONTENTS ARE THE PROPERTY OF KELDERMAN MFG. NO USE OR COPIES MAY BE MADE WITHOUT WRITTEN PERMISSION FROM KELDERMAN.					
						X.XX ±.030						
						X.XXX ±.010						
						FRAC. DIM. ± 1/32"	DESIGN BY: <b>Troy Anderson</b>				DATE: <b>4/3/2020</b>	<b>SHEET 5 OF 5</b>
						Deg. ± .5°						
REV	ECN	CHANGE DESCRIPTION	CHANGE BY	DATE								