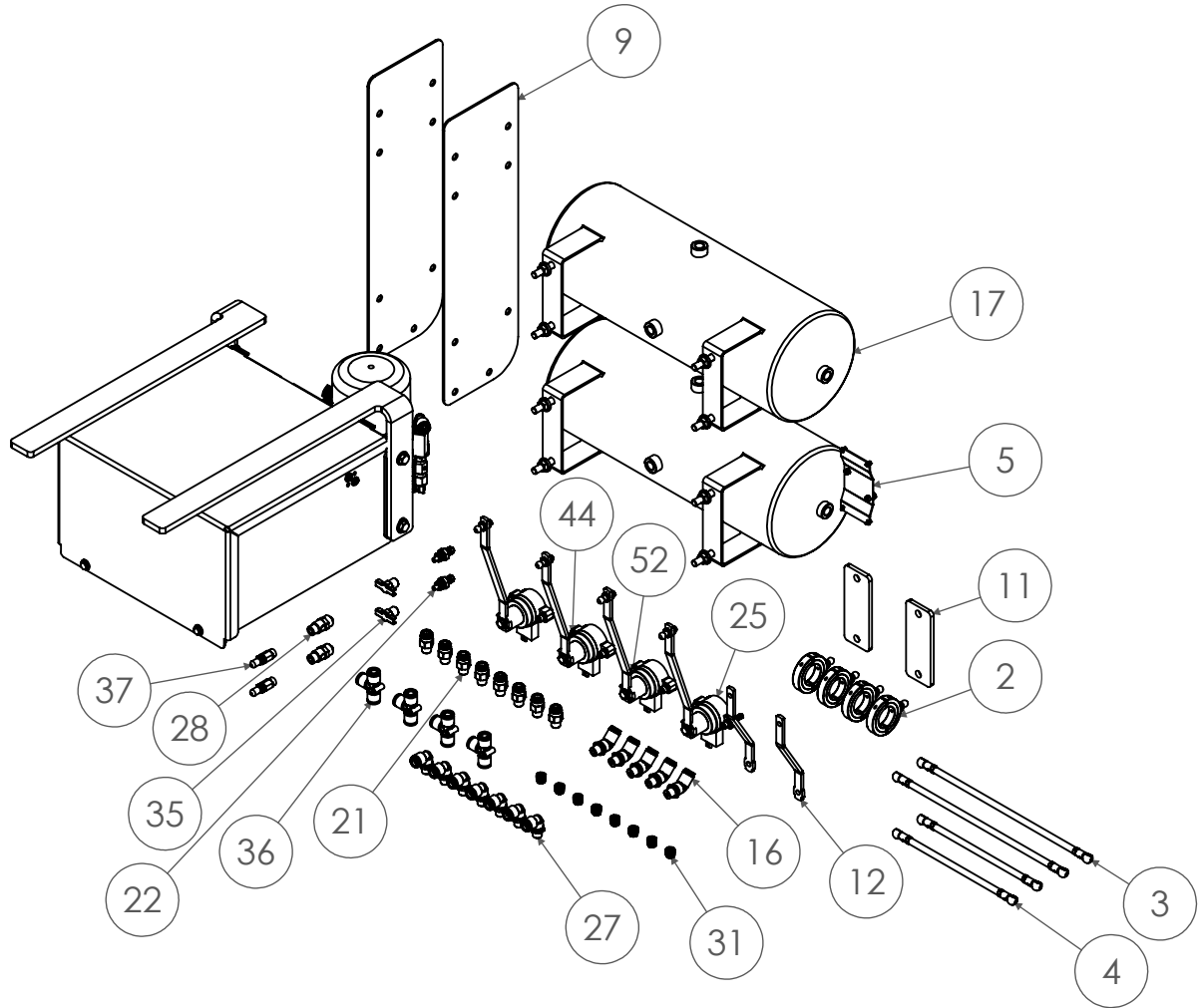
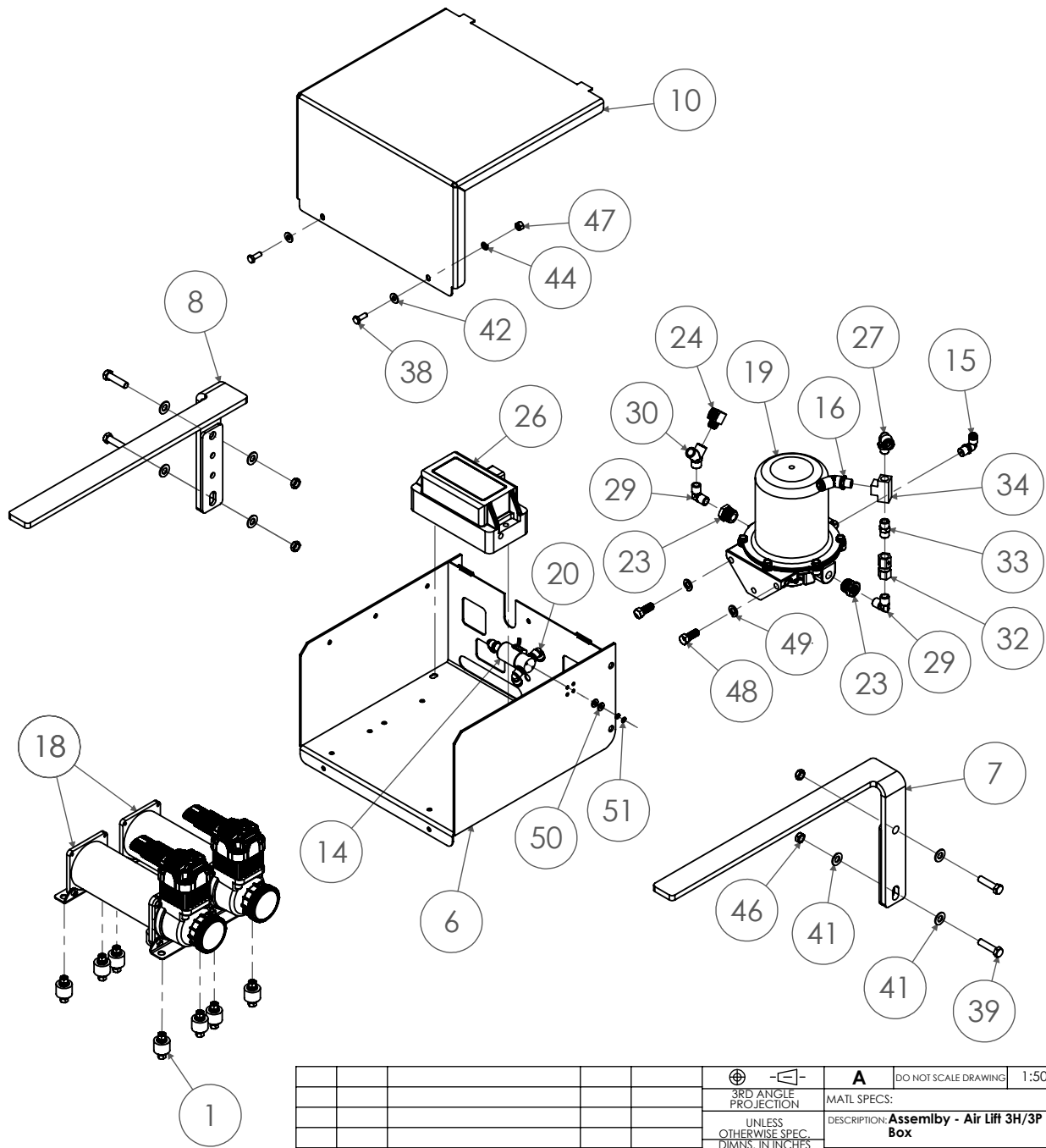


ITEM NO.	PART NUMBER	DESCRIPTION	Complete Kit/QTY.
<i>Assemblies</i>			
1	51657	Assembly - Compressor Foot - Vibration Isolater	8
2	51672	Assembly - Collar w/ Ball Stud	4
3	51728	Assembly - 13-1/2" Sensor Linkage	2
4	51729	Assembly - 13-1/2" Sensor Linkage	2
5	10003867	Assembly - Air Lift Display Mount	1
<i>Weldments</i>			
6	51694	Weldment - SLKD4WD	1
7	51726	Weldment - Hadley Mounting Bracket / Spare Tire Replace (R)	1
8	51727	Weldment - Hadley Mounting Bracket / Spare Tire Replace (L)	1
<i>Parts</i>			
9	51635	Plate - 11ga - Air Tank Mounting Plate	2
10	51655	Plate - 14ga - (ACB) - Lid - w/Bends	1
11	51687	Plate - 1/4" - Tank Brace	2
12	51701	Plate - 7ga - Sensor Arm 2" Shorter	2
<i>Purchased Parts</i>			
14	80001	Parker Dump Valve	1
15	80013	90° Air Fitting 1/4"NPT to 1/4" Tube (SMC)	1
16	80048	K(45° Male Elbow) 11 (3/8") x 35 (1/4"-18 NPT)	6
17	80057	Hoosier - 7 Port - 3 Gallon - Painted	2
18	80064	Purchased - 444C Air Compressor	2
19	80066	Electronic Air Dryer	1
20	80084	90° Male Elbow Tube 1/4" x 1/8-27 NPT	3
21	80089	Straight Male Connector Tube 3/8" x 1/4-18 NPT	8
22	80104	Brass Schrader Valve - 1/4" MNPT	2
23	80124	Male 1/2" NPT to Female 1/4" NPT Fitting	2
24	80125	Male 1/4" NPT to Female 1/4" NPT 90° Fitting	1
25	80166	Hadley - Rotary Sensor Kit	4
26	80167	Air Lift 3/8" 3H Replacement Manifold	1
27	80168	KV2L11-35s - 90° Elbow, 3/8" x 1/4-18 NPT	8
28	80202	Safety Valve - 200 PSI - 1/4" NPT (Pop Off)	2
29	80203	Male 1/4" NPT to Male 1/4" NPT 90° Fitting	2
30	80204	Female 1/4" NPT Y-Fitting	1
31	80206	Plug - 1/4" NPT, 1/4" Hex Key Size	8
32	80215	Check Valve - 1/4" FNPT to 1/4" FNPT	1
33	80216	Brass Hex Nipple - 1/4" MNPT to 1/4" MNPT	1
34	80217	Brass Union Tee - 1/4" FNPT x 1/4" FNPT x 1/4" FNPT	1
35	80218	Brass PetCock - 1/4" MNPT - 150psi	2
36	80219	3/8" Tubing Connection Union Tee (Plastic Fitting)	4
37	80220	Brass Schrader Valve - 1/4" DOT Tube Push-to-Connect	2
<i>Hardware</i>			
38	12108	Bolt - 1/4"-20 X 3/4" - Gr.5	2
39	12217	Bolt - 3/8"-24 X 1.5" Gr.8	4
40	12218	SCREW-HCS-.38-16X1.75-GR8-YZ	8
41	13002	3/8" Flat Washer	8
42	13020	1/4" Flat Washer	2
43	13022	3/8" Flat Washer	16
44	13042	1/4" Lock Washer	10
45	13102	LOCK NUT - 3/8"-16 GR5	8
46	13122	3/8"-24 Lock Nut	4
47	13140	1/4"-20 Hex Nut	2
48	13891	M10-1.25 x 25mm	2
49	13893	M10 Lock Washer	2
50	14062	#10 SAE Flat Washer	2
51	14086	#10 Spfl# Lock Washer Stainless Steel	2
52	14111	Socket Head Cap Screw: 1/4"-20 x 1-1/4" - GR5 - BO	8

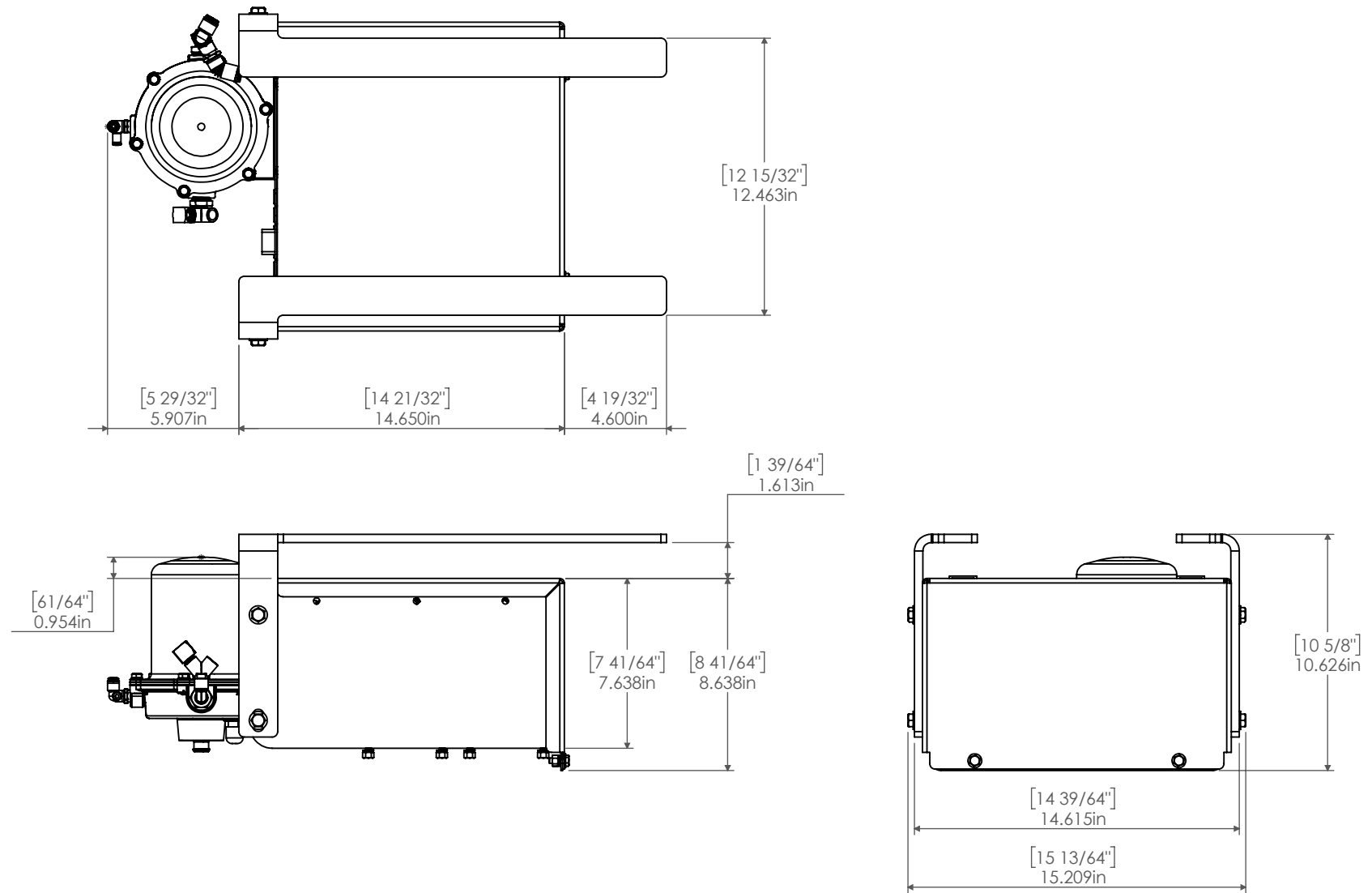


REV	ECN	CHANGE DESCRIPTION	CHANGE BY	DATE	 <b>A</b> DO NOT SCALE DRAWING 1:50 Approximate Weight = lbs	MATL SPECS: DESCRIPTION: <b>Assembly - Air Lift 3H/3P Controls - Air Compressor Box</b>		
UNLESS OTHERWISE SPEC. DIMINS. IN INCHES STD. TOLERANCES X.X ± 0.60 X.XX ± 0.30 X.XXX ± 0.10 FRAC.DIM. ± 1/32" Deg. ± .5°								PROJECT: <b>Controls</b>
					PART NUMBER: <b>51698</b>	DESIGN BY:	DATE: <b>6/18/2019</b>	SHEET 1 OF 3



					 3RD ANGLE PROJECTION	<b>A</b>	DO NOT SCALE DRAWING	1:50	Approximate Weight = lbs
					UNLESS OTHERWISE SPEC. DIMENS. IN INCHES STD. TOLERANCES X.XX ± 0.60 X.XXX ± 0.30 X.XXX ± 0.10 FRAC. DIM. ± 1/32" Deg. ± .5°	MATL SPECS: DESCRIPTION: <b>Assembly - Air Lift 3H/3P Controls - Air Compressor Box</b>			
					PROJECT: <b>Controls</b>				
					PART NUMBER: <b>51698</b>				
					DESIGN BY:				
					DATE: <b>6/18/2019</b>				
REV	ECN	CHANGE DESCRIPTION	CHANGE BY	DATE	NOTICE: THIS DOCUMENT AND ITS CONTENTS ARE THE PROPERTY OF KELDERSMAN MFG. NO USE OR COPIES MAY BE MADE WITHOUT WRITTEN PERMISSION FROM KELDERSMAN				





						 3RD ANGLE PROJECTION	<b>A</b>	DO NOT SCALE DRAWING	1:10	Approximate Weight = lbs
						UNLESS OTHERWISE SPEC. DIMINS. IN INCHES STD. TOLERANCES X.X ± 0.60 X.XX ± 0.30 X.XXX ± 0.10 FRAC. DIM. $\pm 1/32"$ Deg. $\pm .5^\circ$	MATL SPECS: DESCRIPTION: <b>Assembly - Air Lift 3H/3P Controls - Air Compressor Box</b>			
							PROJECT: <b>Controls</b>			
							PART NUMBER: <b>51698</b>			
							DESIGN BY: _____ DATE: <b>6/18/2019</b>			
REV	ECN	CHANGE DESCRIPTION	CHANGE BY	DATE			NOTICE: THIS DOCUMENT AND ITS CONTENTS ARE THE PROPERTY OF KELDERMAN MFG. NO USE OR COPIES MAY BE MADE WITHOUT WRITTEN PERMISSION FROM KELDERMAN			

