



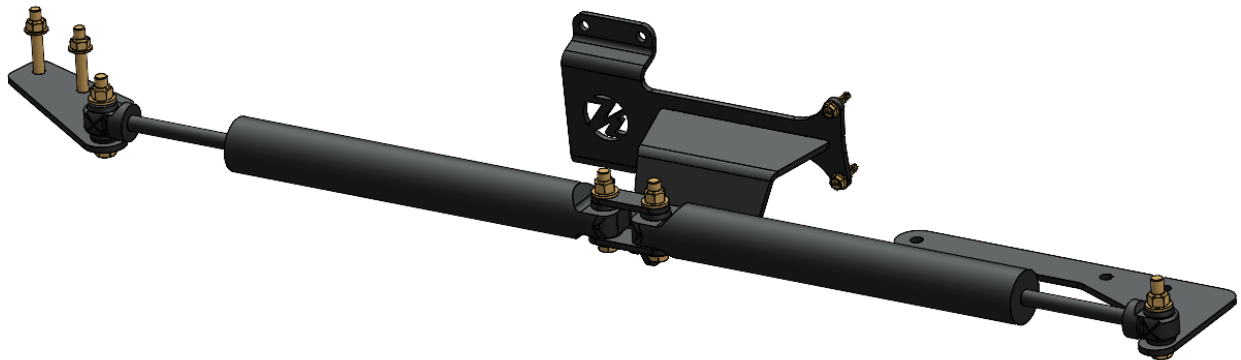
Version 1.1

Kit# 10012103

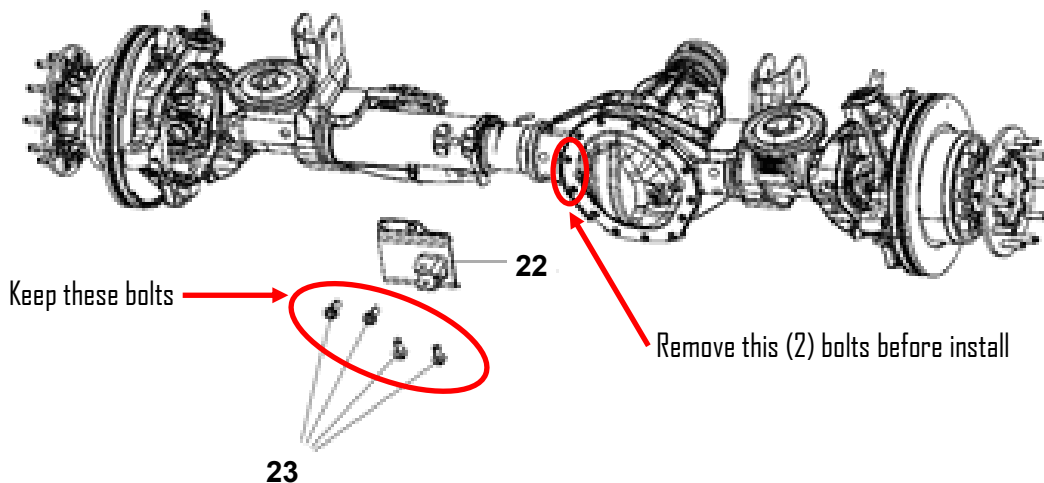
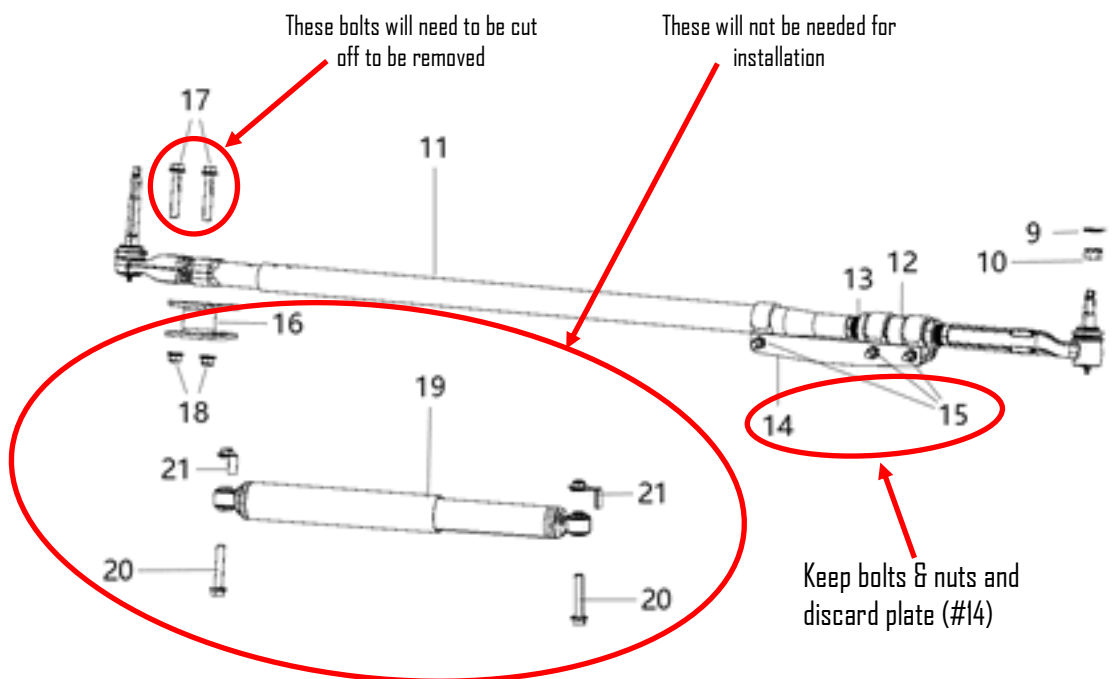
Cutting required

2686 Highway 92 - Oskaloosa, IA 52577
Phone: 641.673.0468
www.kelderman.com

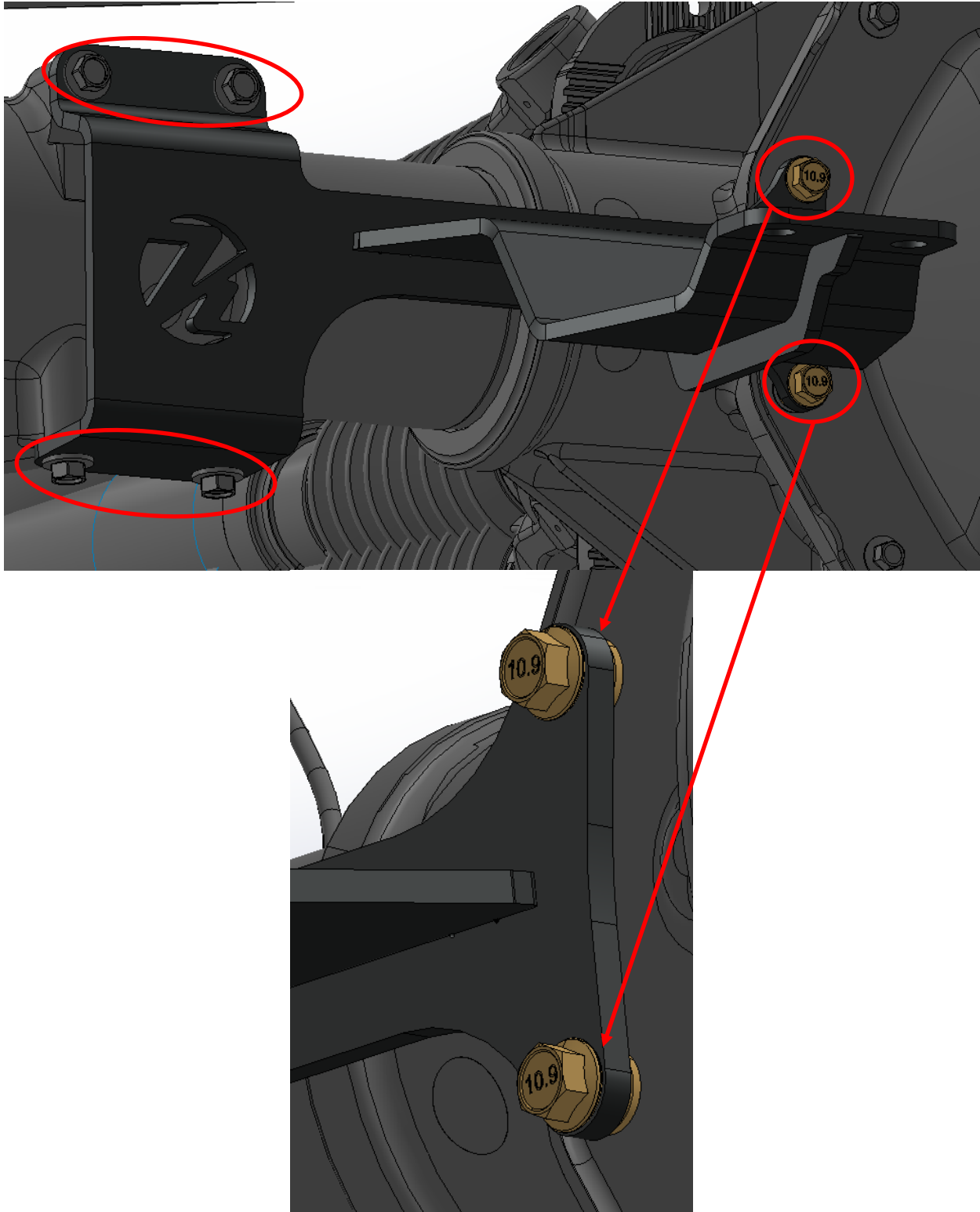
2019+ Ram 4500-5500 Cab Chassis Dual Steering Stabilizer Assembly Installation Instructions



1. Locate steering stabilizer kit and check to make sure all parts and hardware are present and accounted for.
2. Remove hardware (#20 & #21) attaching steering damper (#19) to damper brackets (#16 & #22).
3. Remove steering damper (#19) and discard.
4. Remove damper brackets (#16 & #22) and hardware (#17 & #18). Keep hardware (#23) for axle damper bracket. (1) #17 bolt will need to be cut off to be removed.
5. Remove hardware & reinforcement plate (#14) from DS steering link. Keep factory hardware & discard reinforcement plate.
6. Remove (2) middle bolts from PS of differential cover and discard.



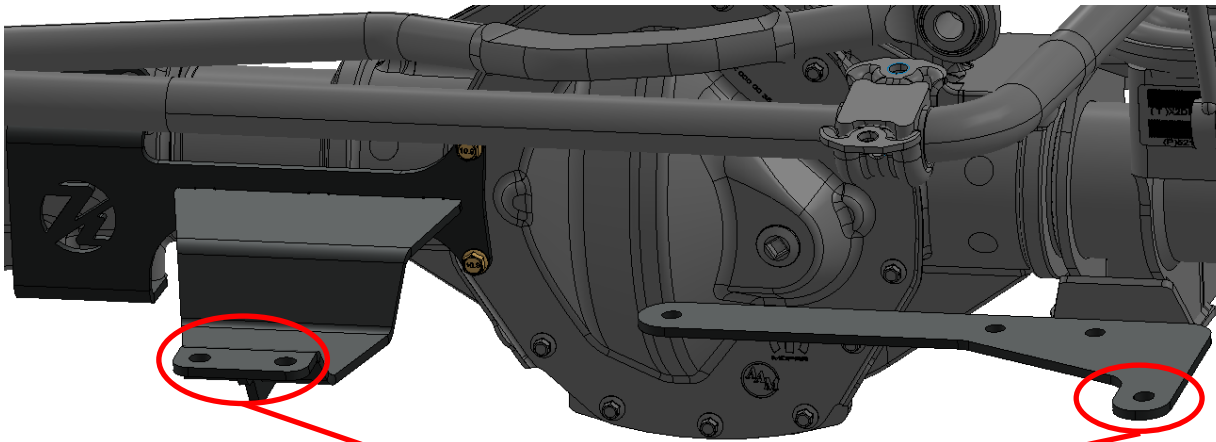
7. Locate steering stabilizer weldment (10012093) and attach to axle using factory bolts removed from axle damper bracket. Locate M8 Flange bolts (14045) & (4) M8 Flat washers (13997), (2) washers go in between the stabilizer bracket and differential cover for each bolt.



8. Locate passenger side shock mounting plate (10012015) & attach to passenger side steering link. Locate (2) 7/16-20" x 3" bolts and hardware.

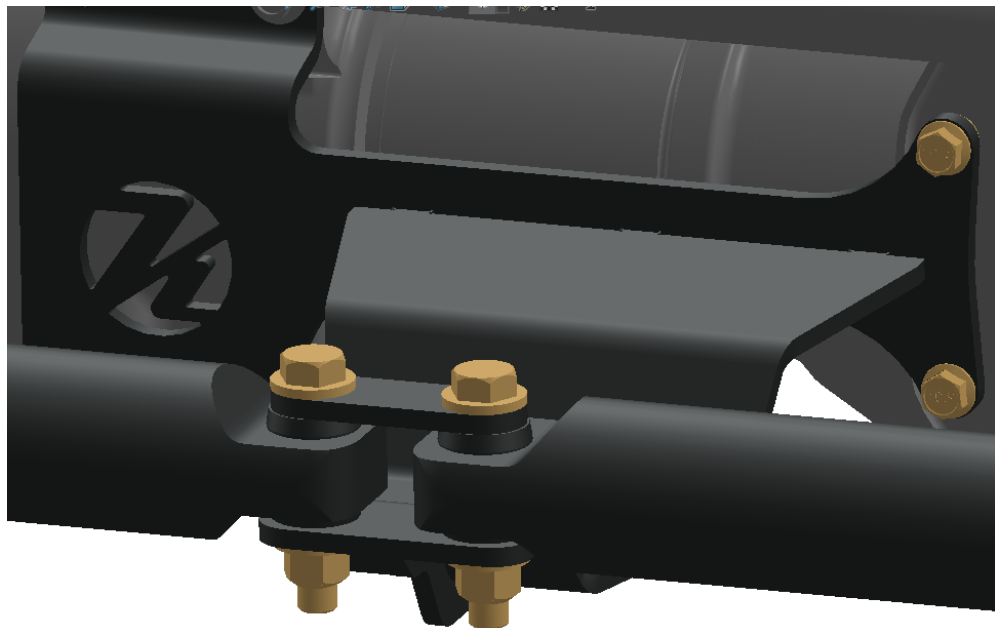
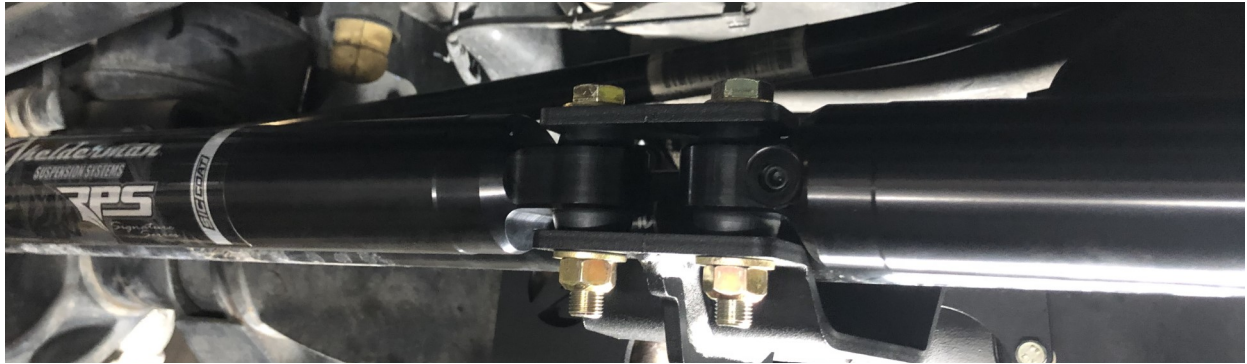


9. Locate drivers side shock mounting plate (10012101) & attach to drivers side steering link. Locate (3) factory M12 bolts and hardware. Rotate the tie rod tube and tube clamp so that the mounting plate is parallel with the stabilizer bracket.

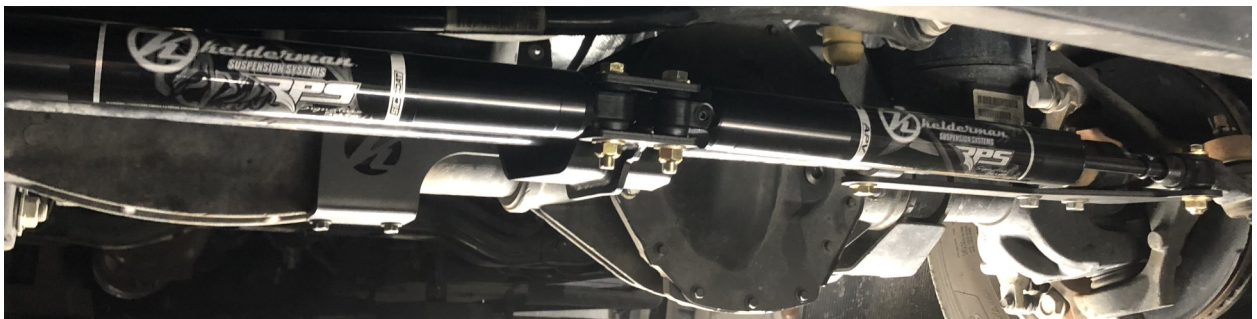


Make these are parallel before tightening down bolts

10. Locate steering stabilizer shocks (10003382). Attach shock fixed ends to steering stabilizer bracket (10012093) with shock strap (20227) and (2) 1/2-20" x 3" bolts and hardware.

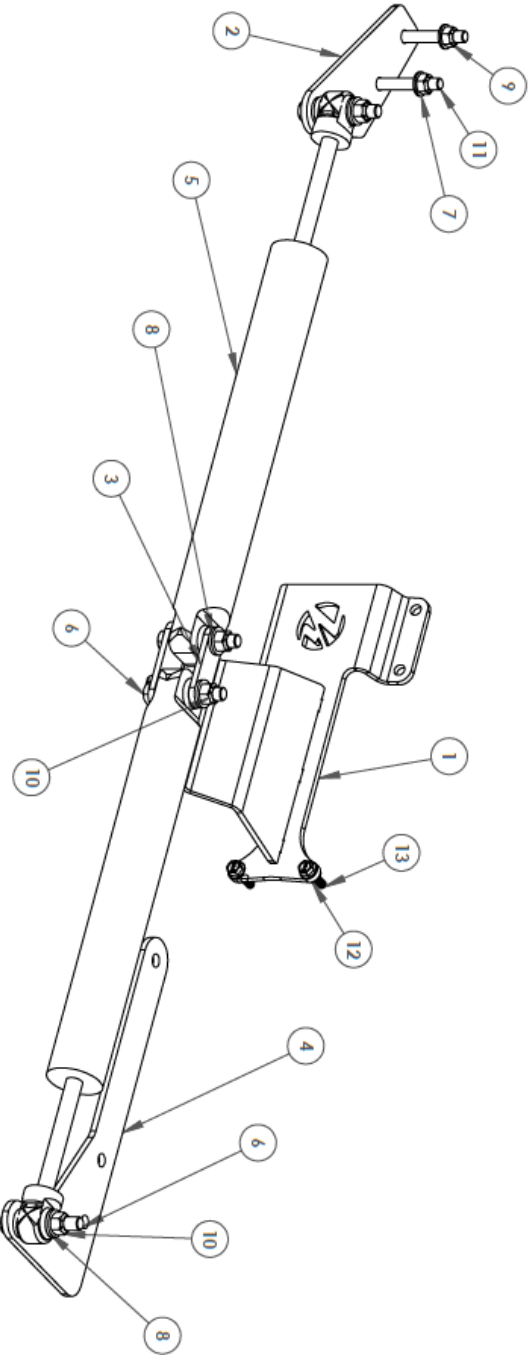


11. Attach shocks to PS & DS mounting plates with (2) 1/2-20" x 3" bolts and hardware. To attach shocks, you will have to depress the shock inward to line up the holes. **Note:** This will require at least 2 people to complete.



Note: Make sure shocks are level with steering link before torquing down bolts.

ITEM NO.	PART NUMBER	DESCRIPTION	QTY.
WELDMENT			
1	10012093	Weldment - Dual Steering Stabilizer	1
2	10012105	Weldment - (PS) Shock Mounting Plate	1
PARTS			
3	20227	Plate - 1/4" - Shock Strap	1
4	10012101	Plate - 1/4" - (DS) Shock Mounting Plate	1
PURCHASED			
5	10003382	Shock - Stabilizer - Kelderman 2.0 Mono	2
HARDWARE			
6	12021	Hex Bolt - 1/2"-20 x 3" - GR8 - YZ	4
7	13023	Flat Washer SAE - 7/16" - GR8 - YZ	4
8	13024	Flat Washer SAE - 1/2" - GR8 - YZ	8
9	13123	Top Distorted Thread Lock Nut - 7/16"-20 - GR8 - YZ	2
10	13124	Top Distorted Thread Lock Nut - 1/2"-20 - GR8 - YZ	4
11	13423	Hex Bolt - 7/16"-20 x 3" - GR8 - YZ	2
12	13997	Washer - M8 Flat Washer	4
13	14045	Flange Hex Bolt - M8-1.25 x 30mm - Class 10.9 - Z	2



REV	ECN	CHANGE DESCRIPTION	CHARACTER	DATE	 PROJECTION: FIRST ANGLE DIMENSIONS: INCHES UNITS: INCHES TOLERANCES: FRACTIONS: 1/32"	DO NOT SCALE DRAWING APPROXIMATE WEIGHT = LBS: 11.2	PROJECT: 2019+ Dodge 4500-5000 Cab Chassis Dynamox PART NUMBER: 10012103 DESIGNER:	DATE: 9/7/2022 DESIGNED BY:	
-----	-----	--------------------	-----------	------	--	--	--	--------------------------------	--

SHEET 1 OF 2

Product Owner Responsibilities

Product owner is solely responsible for pre-operation inspection, periodic inspections, maintenance, and use of the product as specified by Kelderman Mfg. Inc. Of particular importance is the re-torque of fasteners. This re-torque must be performed within 90 days or 1000 miles of this product being put into service.

Product owner is responsible for "down time" expenses, cargo damage, and all business costs and losses resulting from a warrantable failure.

First 1,000 Miles

- Re-torque all hardware.

Bolt Size	Grade 5 Torque	Grade 8 Torque
1/4"-20	8 <i>ft-lb</i>	12 <i>ft-lb</i>
3/8"-16	31 <i>ft-lb</i>	44 <i>ft-lb</i>
3/8"-24	35 <i>ft-lb</i>	49 <i>ft-lb</i>
7/16"-20	75 <i>ft-lb</i>	106 <i>ft-lb</i>
1/2"-20	85 <i>ft-lb</i>	120 <i>ft-lb</i>
9/16"-18	121 <i>ft-lb</i>	171 <i>ft-lb</i>
5/8"-11	150 <i>ft-lb</i>	212 <i>ft-lb</i>
5/8"-18	170 <i>ft-lb</i>	240 <i>ft-lb</i>
3/4"-16	297 <i>ft-lb</i>	420 <i>ft-lb</i>
7/8"-14	474 <i>ft-lb</i>	669 <i>ft-lb</i>

Every 30,000 Miles

- When greasing steering components, check steering stabilizer hardware and shocks.

Kelderman Manufacturing appreciates your business. We strive to meet the needs of our customers by providing the highest quality products. If you have any questions concerning our products please call or email us at the following:

2686 Highway 92
Oskaloosa, Iowa 52577
Phone: (641) 673-5396
Fax: (641) 673-4168
Email: info@kelderman.com

Safety

Your Safety and the Safety of Others is Very Important.

- Read and understand all safety precautions and instructions before installing this product.

CAUTION: Trucks Equipped with Parking Sensors or Other Like Devices.

- Relocation of these devices will alter the field of view. It is the responsibility of the owner to understand how these changes affect the operation of these systems.

WARNING: Careless Installation Can Result in Serious Injury or Property Damage

- Wear eye protection.
- Disconnect the battery before doing any work on the vehicle.
- Work on flat level ground.
- Ensure truck is properly supported by jack stands. Never work under a vehicle supported only by hydraulic jacks.
- Take precautions when lifting product. Due to the size and weight of this product two people are recommended for installation.
- Never work directly under the product until it has been securely fastened to the vehicle.
- Avoid sharp, hot, and moving components when routing electrical cables and air lines.
- If drilling inspect both sides of the surface and remove/relocate any objects located in the way.
- Ensure all bolts are properly tightened before driving.