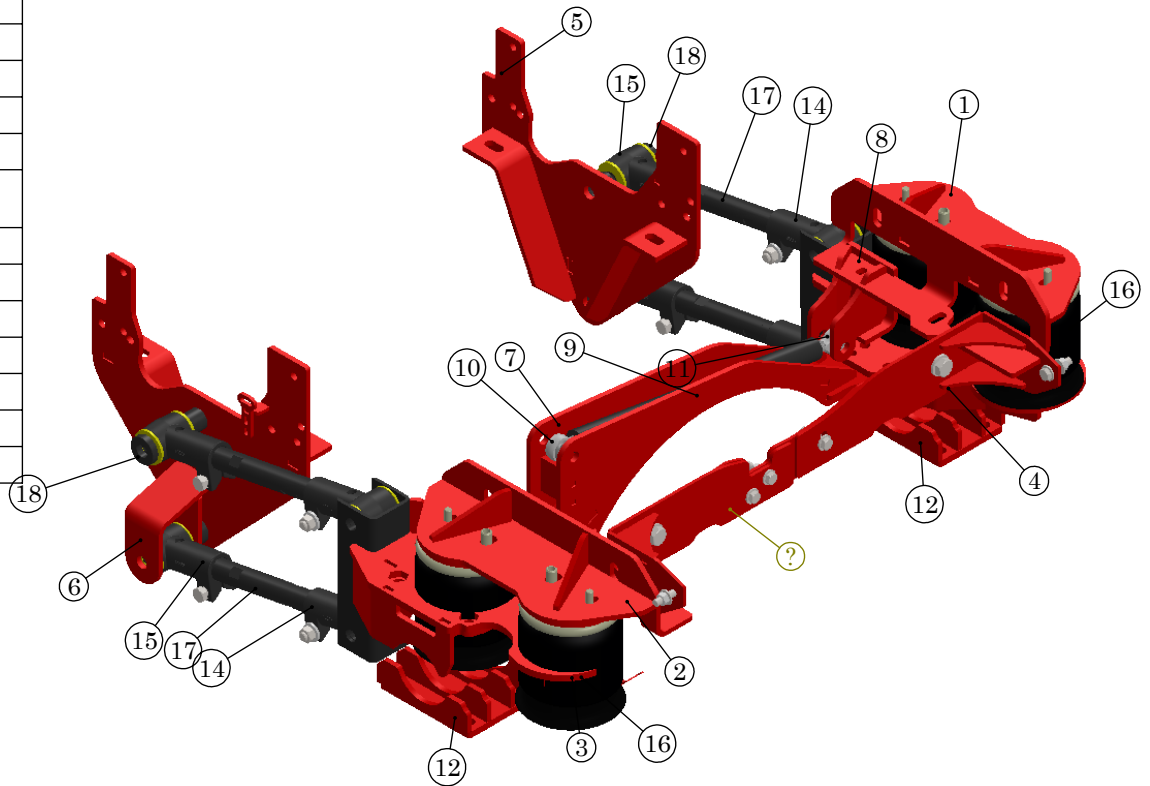


| ITEM NO. | PART NUMBER | DESCRIPTION | Kit Only/QTY. |
|----------|-------------|--|---------------|
| 1 | 70422 | (PS) Upper Frame/Bag Mount | 1 |
| 2 | 70426 | (DS) Upper Frame/Bag Mount | 1 |
| 3 | 69524 | (DS) Lower Bag Assembly | 1 |
| 4 | 69525 | (PS) Lower Bag Assembly | 1 |
| 5 | 70419 | (PS) Side Plate | 1 |
| 6 | 70421 | Weldment - (DS) Side Plate | 1 |
| 7 | 70430 | (PHB) Cross-member (3/4" Bolt) | 1 |
| 8 | 70433 | (PS) Upper Panhard Bar Frame Bracket | 1 |
| 9 | 15232 | Tube - 21.50" Panhard Bar | 1 |
| 10 | 80109 | (RH) Ball Joint Rod End 3/4-16 x 3/4" | 1 |
| 11 | 80110 | (LH) Ball Joint Rod End 3/4-16 x 3/4" | 1 |
| 12 | 69214 | 4.5" Lower Axle Clamp | 2 |
| 13 | 69218 | Assembly - Fuel Tank Crossmember Support | 1 |
| 14 | 18498 | Assembly - Cast Knuckle 10006 | 4 |
| 15 | 18499 | Assembly - Cast Knuckle 10005 - 1" ID | 4 |
| 16 | 80012-2119 | Firestone 2119 | 4 |
| 17 | 52114.5 | 14.5" Trailing Arm Bar | 4 |
| 18 | 30267 | Bushing - 1.5" OD x .875" ID x .5" Thick | 2 |
| 19 | 69537 | Brake Relocation Bracket | 1 |
| 20 | 10007619 | Plate - 3/8" - Upper Air Bag Shim | 4 |



UNLESS OTHERWISE SPECIFIED:
 DIMENSIONS ARE IN INCHES
 TOLERANCES, Unless Specified
 FRACTIONAL $\pm 1/32"$
 ANGULAR: MACH $\pm .5^\circ$
 TWO PLACE DECIMAL $\pm .03$
 THREE PLACE DECIMAL $\pm .010$

MATERIAL

FINISH

WEIGHT

636.81

DESIGN BY

ZPB

Shelf #/ QTY

NEW DXF

Run QTY

PROPRIETARY AND CONFIDENTIAL

THE INFORMATION CONTAINED IN THIS
 DRAWING IS THE SOLE PROPERTY OF
 KELDERMAN MFG. INC. ANY
 REPRODUCTION IN PART OR AS A WHOLE
 WITHOUT THE WRITTEN PERMISSION OF
 KELDERMAN MFG. INC. IS PROHIBITED.

Wednesday, September 16, 2020 10:09:53 AM

Project: 2017 F350 Chassis Cab (Wide
 Axle)

TITLE: Stock Height 4-Link (Rear)

DWG. NO.

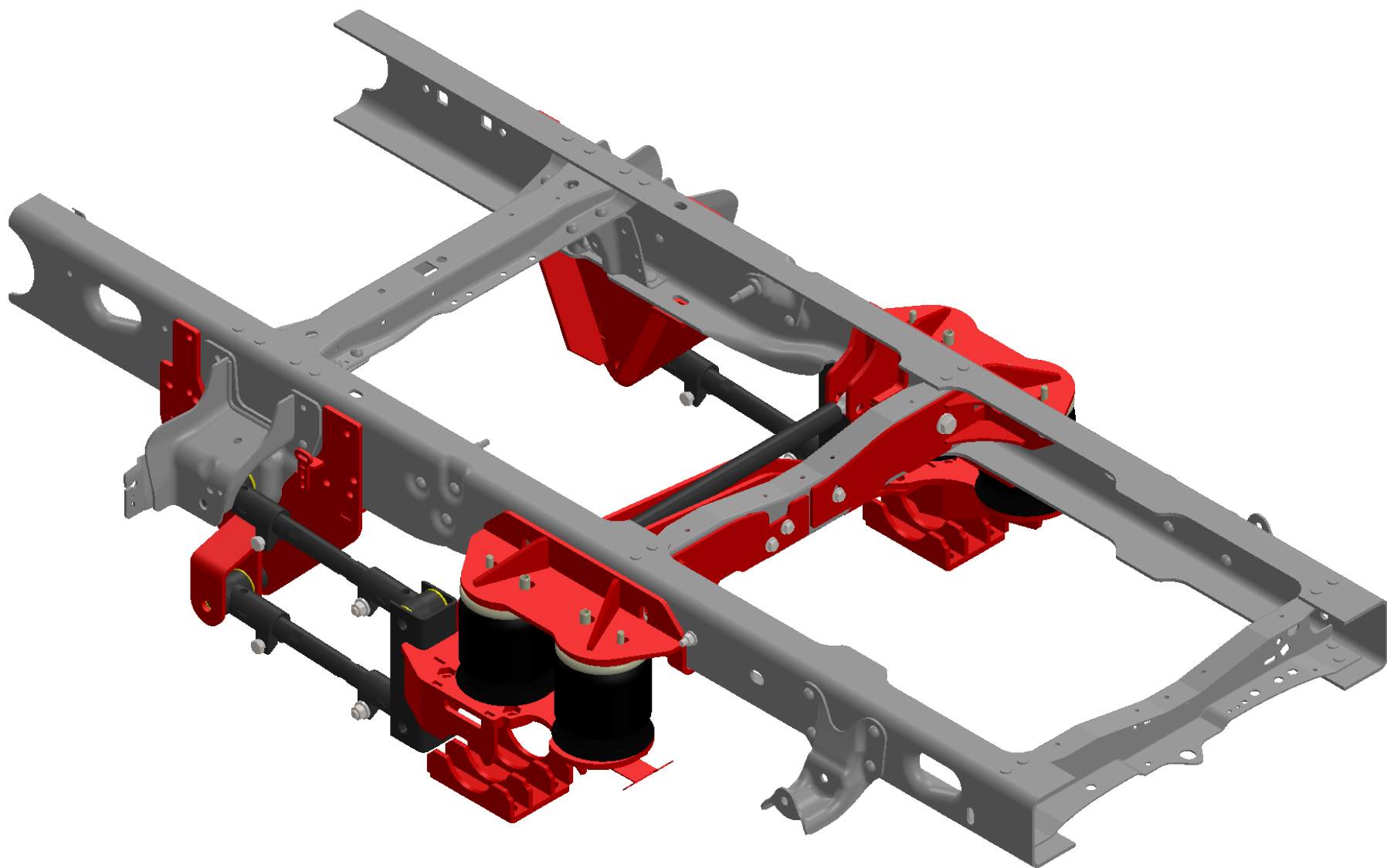
KLM-69523

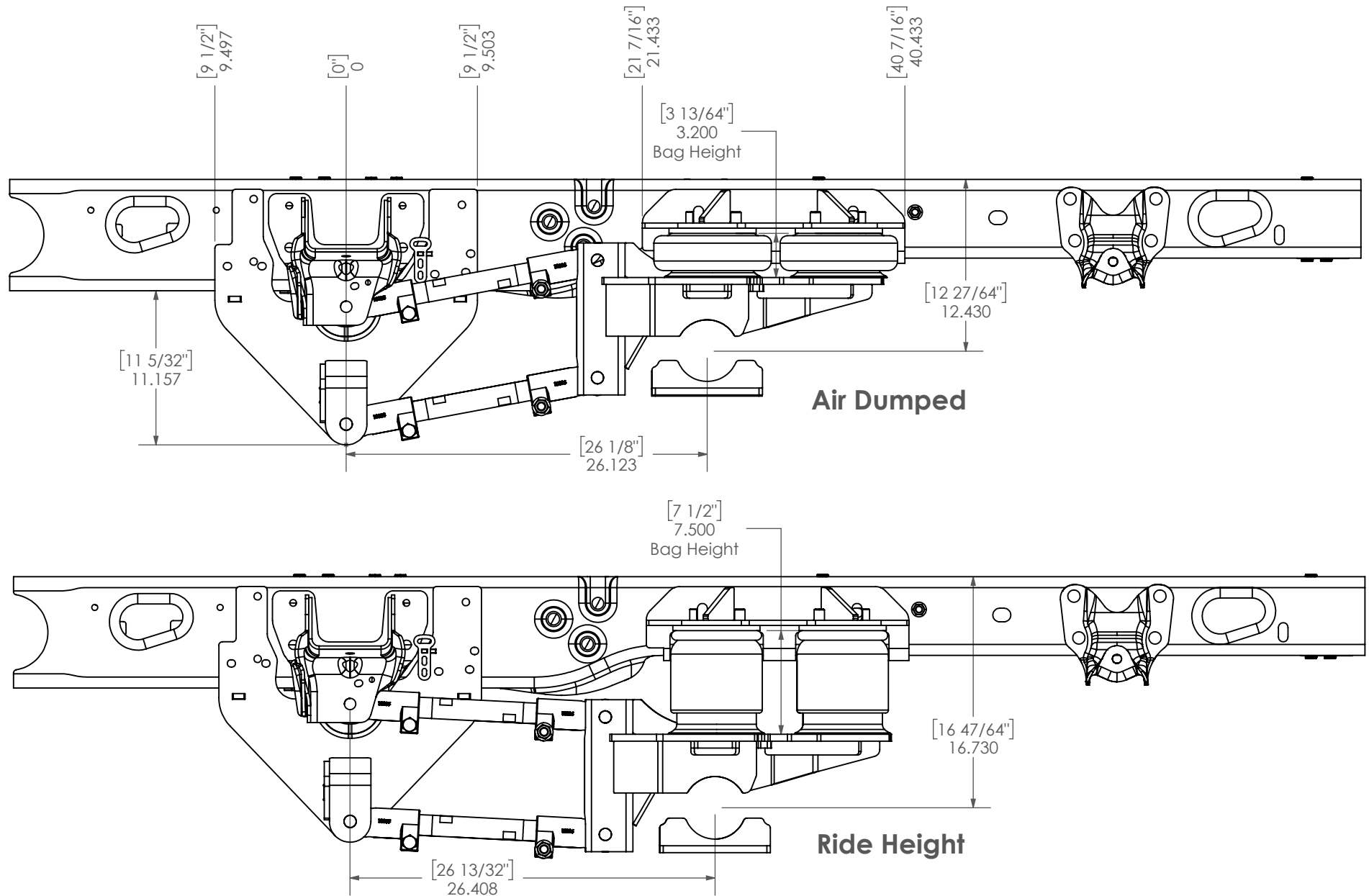
SCALE: 1:24

kelderman

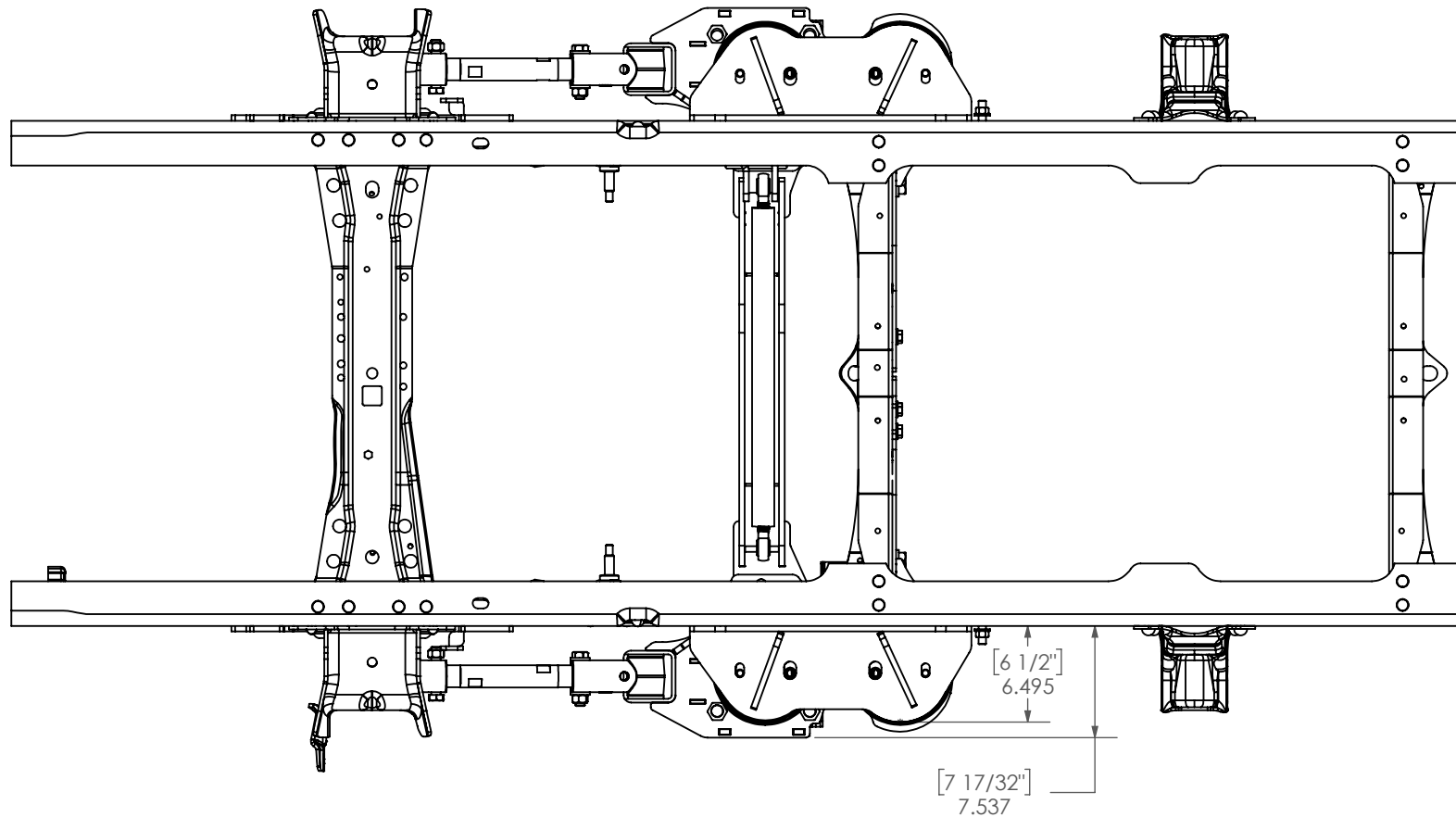
DO NOT SCALE DRAWING



SHEET 1 OF 4





| | | | | | | | | |
|-----|-----|--------------------|-----------|------|---|--|--|--|
| | | | | | | A DO NOT SCALE DRAWING 1:24 Approximate Weight = lbs | | |
| | | | | | 3RD ANGLE PROJECTION UNLESS OTHERWISE SPEC. DIMS. IN INCHES STD. TOLERANCES X.X ± 0.60 X.XX ± 0.30 X.XXX ± 0.10 FRAC. DIM. ± 1/32" Deg. ± .5° | MATL SPECS: DESCRIPTION: Kit - Stock Height 4-Link - Rear PROJECT: 2017 F350 Chassis Cab (Wide Axle) PART NUMBER: KLM-69523 DESIGN BY: | DATE: 9/16/2020 NOTICE: THIS DOCUMENT AND ITS CONTENTS ARE THE PROPERTY OF KELDERMAN MFG. NO USE OR COPIES MAY BE MADE WITHOUT WRITTEN PERMISSION FROM KELDERMAN | |
| REV | ECN | CHANGE DESCRIPTION | CHANGE BY | DATE | | | | |



| | | | | | | | | | | | | |
|-----|-----|--------------------|-----------|------|--|---|--|----------------------|------|--------------------------|---|--|
| | | | | | |  | A | DO NOT SCALE DRAWING | 1:32 | Approximate Weight = lbs |  | |
| | | | | | | 3RD ANGLE PROJECTION | MATL SPECS: | | | | | NOTICE: THIS DOCUMENT AND ITS CONTENTS ARE THE PROPERTY OF KELDERMAN MFG. NO USE OR COPIES MAY BE MADE WITHOUT WRITTEN PERMISSION FROM KELDERMAN |
| | | | | | | UNLESS OTHERWISE SPEC. | DESCRIPTION: Kit - Stock Height 4-Link - Rear | | | | | |
| | | | | | | DIMS. IN INCHES | PROJECT: | | | | | |
| | | | | | | STD. TOLERANCES | 2017 F350 Chassis Cab (Wide Axle) | | | | | |
| | | | | | | X.X ± .060 | PART NUMBER: KLM-69523 | | | | SHEET 4 OF 4 | |
| | | | | | | X.XX ± .030 | DESIGN BY: | | | | | |
| | | | | | | X.XXX ± .010 | | | | | | |
| | | | | | | FRAC. DIM. ± 1/32" | DATE: 9/16/2020 | | | | | |
| | | | | | | Deg. ± .5° | | | | | | |
| REV | ECN | CHANGE DESCRIPTION | CHANGE BY | DATE | | | | | | | | |