



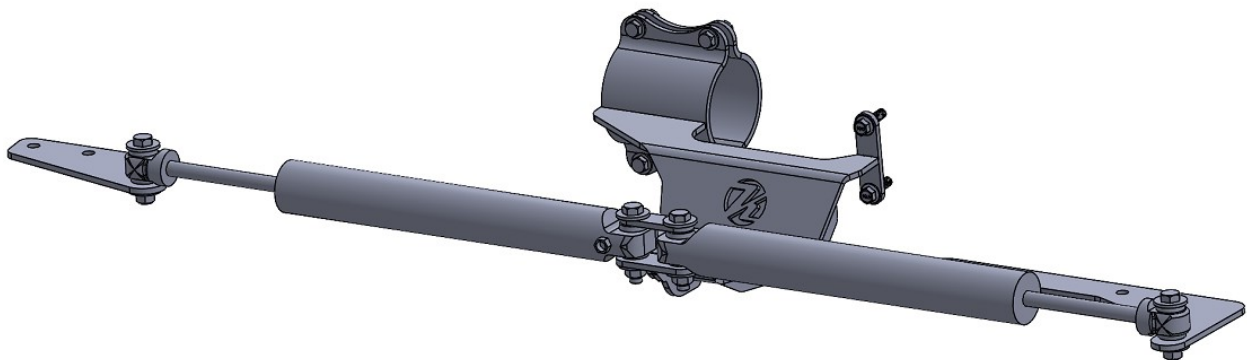
Version 1.0

Kit# 10013073

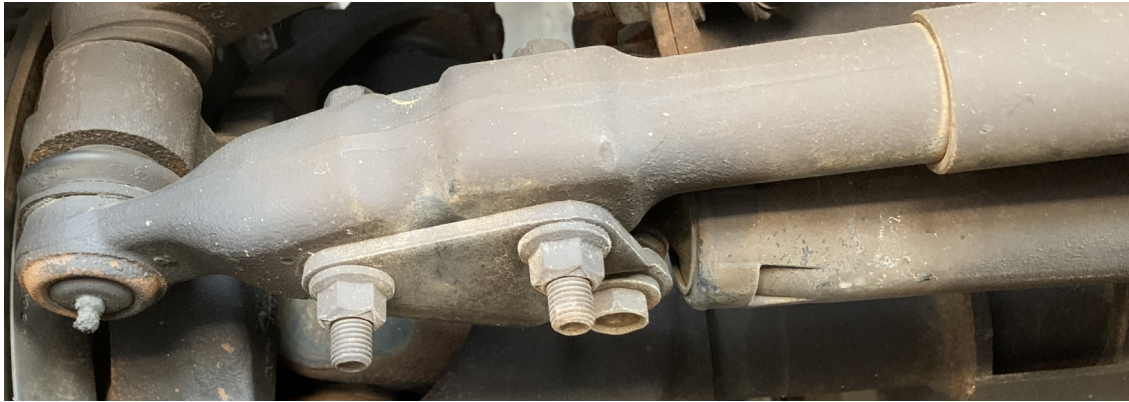
Cutting Required

2686 Highway 92 - Oskaloosa, IA 52577
Phone: 641.673.0468
www.kelderman.com

2013-2018 Ram 4500-5500 Cab Chassis Dual Steering Stabilizer Assembly Installation Instructions



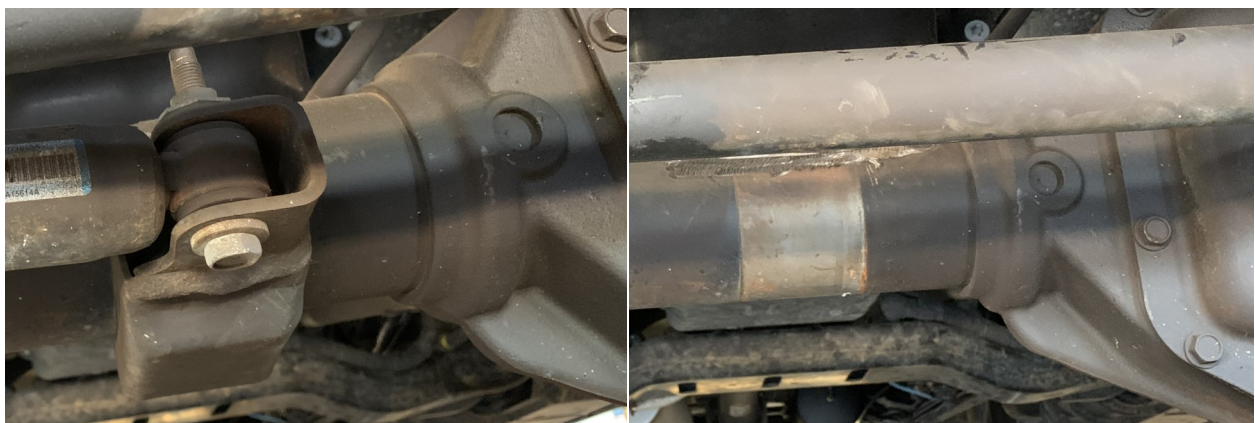
1. Remove the OEM steering components: keep OEM all bolts and nuts (a) passenger side bracket, (b) driver side bracket (*both plates*), and (c) shock and shock bracket (*cutting required, reference Step 2 for details*). **Note:** *making a full left turn will allow for easier removal of passenger side bolts; set wheels to neutral afterwards*



(a) Passenger Side OEM bracket



(b) Driver Side OEM bracket



(c1) OEM shock bracket and (c2) shock bracket removed

2. Using a 4" cutting wheel, cut the OEM shock bracket off of the axle at the welds; take care not to cut into the axle surface itself. Grind the axle surface smooth, prep and cover with an anti-corrosion paint.

Note: Do not use a torch to cut the bracket off.



OEM shock bracket (*before cutting*)



OEM shock bracket (*after cutting*)

3. Remove the 2, left-center bolts of the differential cover. Locate steering stabilizer central bracket and clamp (#1 & #2) and attach to the axle using the provided 7/16" hardware (#11, #12 & #13) along with the M10 hardware (#14) for the differential cover.



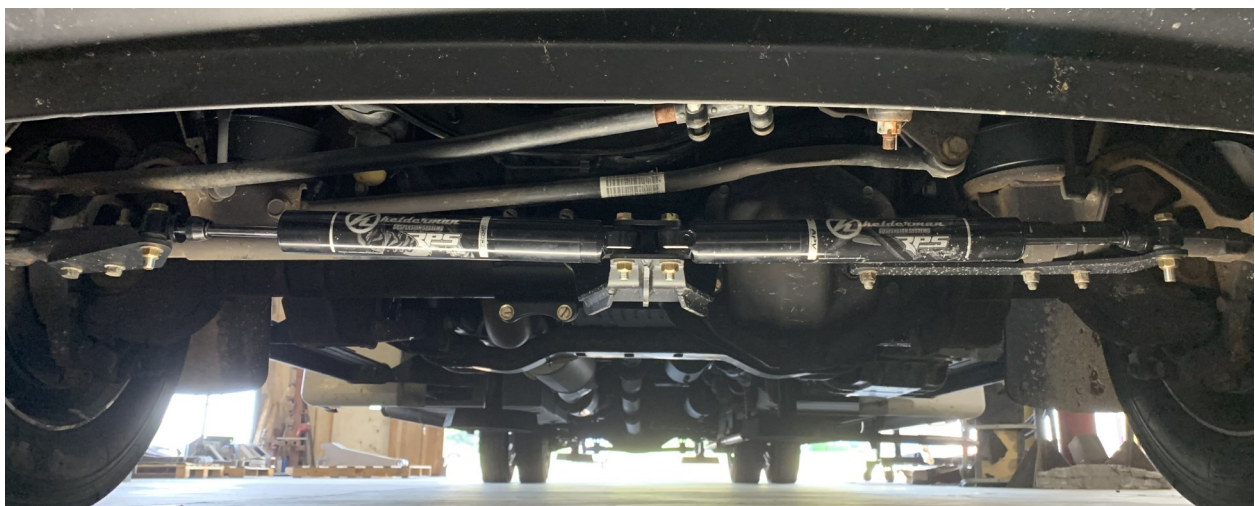
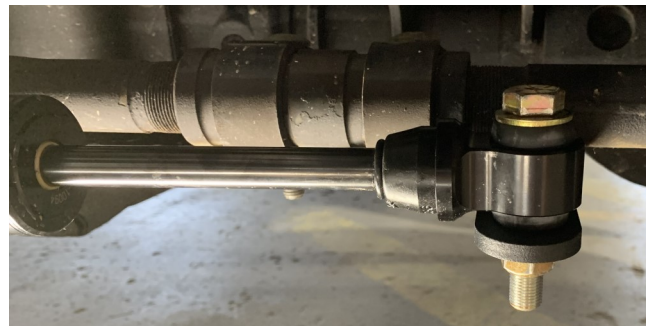
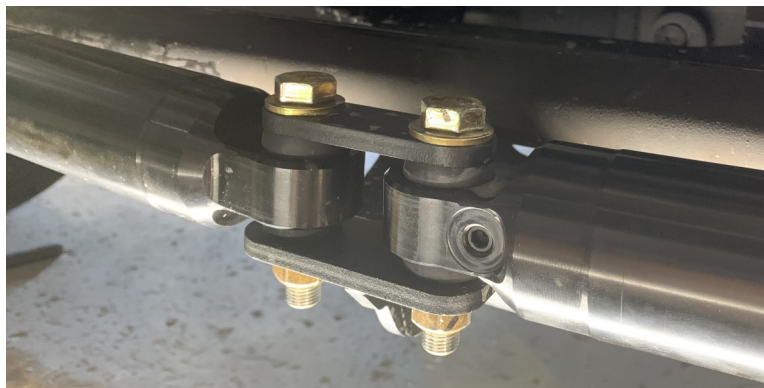
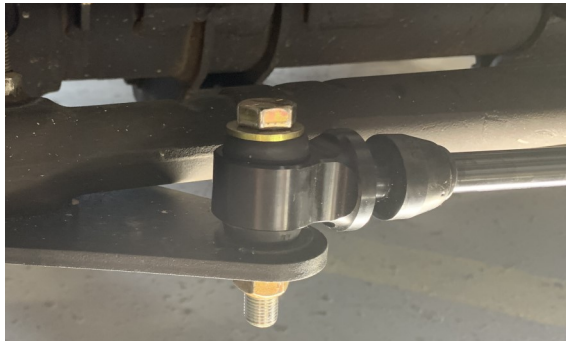
4. Locate driver side shock mounting plate (#2) and attach to driver side steering link using the OEM bolts and nuts from step 1 and rotate the clamping rings so the shock mounting plate is parallel to the ground. **Note:** *the clamping ring positions may need to be adjusted for proper fitment*



5. Locate passenger side shock mounting plate (#3) and attach to passenger side steering link using the OEM bolts and nuts from step 1.



6. Install the shocks, along with the shock strap (#6), with the provided 1/2" hardware. **Note:** 3" length bolts are used in the central bracket; 2 1/2" length bolts are used on the ends of the shocks



13	1 31 23	Top Distorted Thread Lock Nut - 7/16"-20 - GR8 - YZ
14	1 38 72	Flange Bolt - M10-1.5mm x 35mm - Class 10.9 - Z
15	1 000 03362	Shock - Stabilizer - Kelderman 2.0 Mono

Product Owner Responsibilities

Product owner is solely responsible for pre-operation inspection, periodic inspections, maintenance, and use of the product as specified by Kelderman Mfg. Inc. Of particular importance is the re-torque of fasteners. This re-torque must be performed within 90 days or 1000 miles of this product being put into service.

Product owner is responsible for "*down time*" expenses, cargo damage, and all business costs and losses resulting from a warrantable failure.

First 1,000 Miles

- Re-torque all hardware.

Bolt Size	Grade 5 Torque	Grade 8 Torque
1/4"-20	8 <i>ft-lb</i>	12 <i>ft-lb</i>
3/8"-16	31 <i>ft-lb</i>	44 <i>ft-lb</i>
3/8"-24	35 <i>ft-lb</i>	49 <i>ft-lb</i>
7/16"-20	75 <i>ft-lb</i>	106 <i>ft-lb</i>
1/2"-20	85 <i>ft-lb</i>	120 <i>ft-lb</i>
9/16"-18	121 <i>ft-lb</i>	171 <i>ft-lb</i>
5/8"-11	150 <i>ft-lb</i>	212 <i>ft-lb</i>
5/8"-18	170 <i>ft-lb</i>	240 <i>ft-lb</i>
3/4"-16	297 <i>ft-lb</i>	420 <i>ft-lb</i>
7/8"-14	474 <i>ft-lb</i>	669 <i>ft-lb</i>

Every 30,000 Miles

- When greasing steering components, check steering stabilizer hardware and shocks.

Kelderman Manufacturing appreciates your business. We strive to meet the needs of our customers by providing the highest quality products. If you have any questions concerning our products please call or email us at the following:

2686 Highway 92
Oskaloosa, Iowa 52577
Phone: (641) 673-5396
Fax: (641) 673-4168
Email: info@kelderman.com

Safety

Your Safety and the Safety of Others is Very Important.

- Read and understand all safety precautions and instructions before installing this product.

CAUTION: Trucks Equipped with Parking Sensors or Other Like Devices.

- Relocation of these devices will alter the field of view. It is the responsibility of the owner to understand how these changes affect the operation of these systems.

WARNING: Careless Installation Can Result in Serious Injury or Property Damage

- Wear eye protection.
- Disconnect the battery before doing any work on the vehicle.
- Work on flat level ground.
- Ensure truck is properly supported by jack stands. Never work under a vehicle supported only by hydraulic jacks.
- Take precautions when lifting product. Due to the size and weight of this product two people are recommended for installation.
- Never work directly under the product until it has been securely fastened to the vehicle.
- Avoid sharp, hot, and moving components when routing electrical cables and air lines.
- If drilling inspect both sides of the surface and remove/relocate any objects located in the way.
- Ensure all bolts are properly tightened before driving.