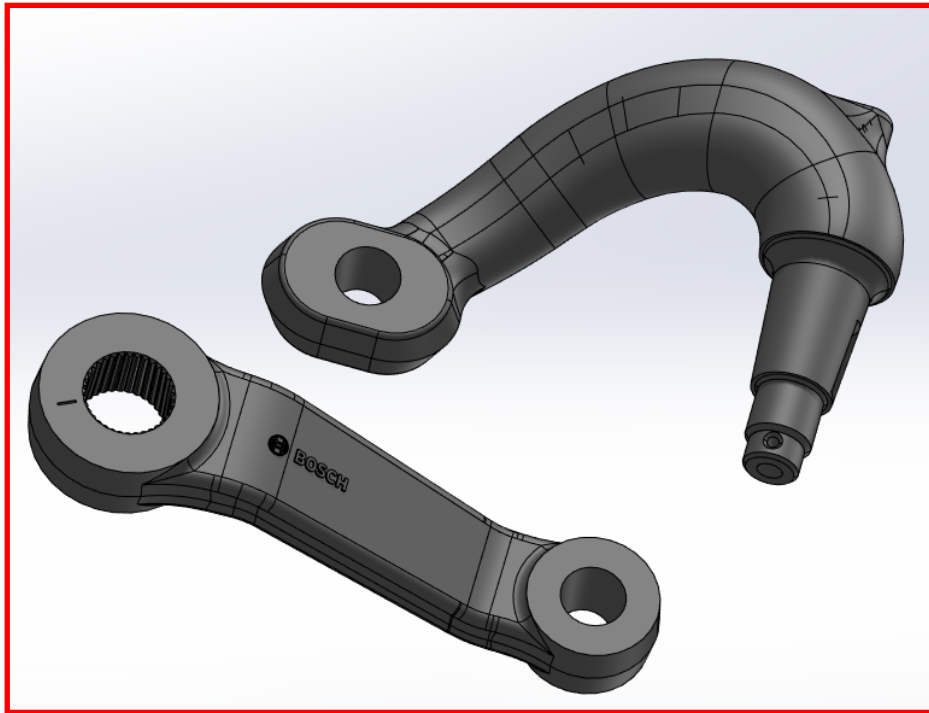


MISSION CRITICAL NOTICE



You will need to send both the Factory Pitman Arm and Steering Arm back to Kelderman to be machined.

You will receive a box with a shipping label to ship these to us for modification.

We will expedite the processing of these and return them to you.

INSTALL INSTRUCTIONS

**2-STAGE FRONT - 4" LIFT - 2WD
2019+ CHEVROLET 4500-6500**



KIT # 10014749

kelderman



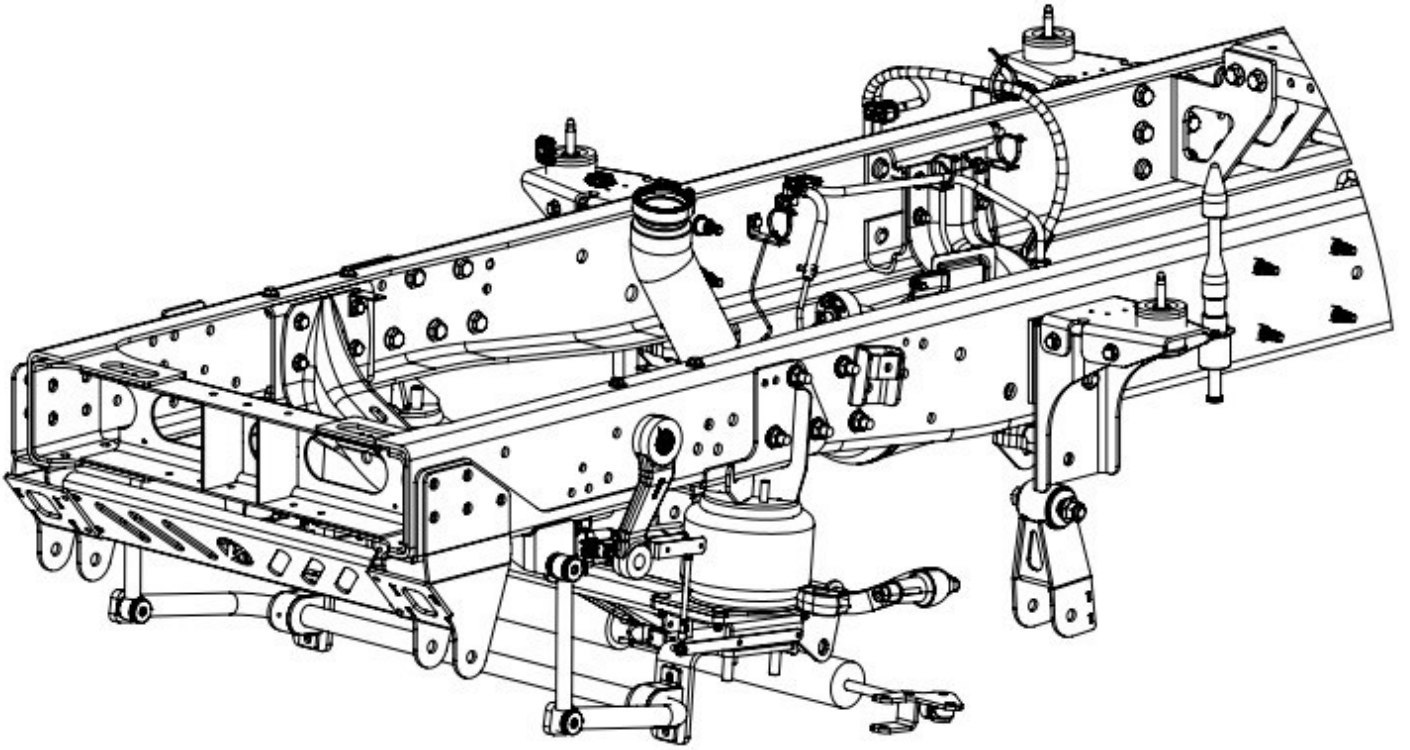
KELDERMAN MANUFACTURING

2686 HIGHWAY 92 EAST OSKALOOSA, IOWA 52577

INFO@KELDERMAN.COM 1-800-334-6150

Kelderman Air Ride

2-stage Front - 4" Lift - 2WD



kelderman

Thank you for your purchase.

Kelderman manufacturing is pleased to serve our customers with the best Air Ride Suspension kits available on the market today. We strive for excellence in all that we do.

Torque Specifications

We have highlighted the relevant torque specifications for the bolts used in this kit. To ensure proper operational safety, please verify the torque with a calibrated Torque Wrench.

FASTENER TORQUE CHARTS


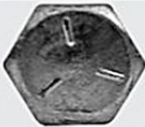

|  |  BOLT CLAMP LOADS  Suggested Assembly Torque Values | | | | | | | | | |
|---|---|---------------|---------------|------------------|------------------|---------------------------|---------------|---------------|------------------|------------------|
| | USS/SAE GRADE 5 | | | | | USS/SAE GRADE 8 | | | | |
| DIAMETER & THREADS PER INCH | TENSILE STRENGTH MIN. PSI | PROOF LOAD LB | CLAMP LOAD LB | TORQUE DRY FT LB | LUBRICATED FT LB | TENSILE STRENGTH MIN. PSI | PROOF LOAD LB | CLAMP LOAD LB | TORQUE DRY FT LB | LUBRICATED FT LB |
| 1/4-20 | 120,000 | 2,700 | 2,020 | 8 | 6.3 | 150,000 | 3,800 | 2,850 | 12 | 9 |
| 28 | 120,000 | 3,100 | 2,320 | 10 | 7.2 | 150,000 | 4,350 | 3,250 | 14 | 10 |
| 5/16-18 | 120,000 | 4,450 | 3,340 | 17 | 13 | 150,000 | 6,300 | 4,700 | 24 | 18 |
| 24 | 120,000 | 4,900 | 3,700 | 19 | 14 | 150,000 | 6,950 | 5,200 | 27 | 20 |
| 3/8-16 | 120,000 | 6,600 | 4,950 | 30 | 23 | 150,000 | 9,300 | 6,980 | 45 | 35 |
| 24 | 120,000 | 7,450 | 5,600 | 35 | 25 | 150,000 | 10,500 | 7,900 | 50 | 35 |
| 7/16-14 | 120,000 | 9,050 | 6,780 | 50 | 35 | 150,000 | 12,800 | 9,550 | 70 | 50 |
| 20 | 120,000 | 10,100 | 7,570 | 55 | 40 | 150,000 | 14,200 | 10,650 | 80 | 60 |
| 1/2-13 | 120,000 | 12,100 | 9,050 | 75 | 55 | 150,000 | 17,000 | 12,750 | 110 | 80 |
| 20 | 120,000 | 13,600 | 10,200 | 85 | 65 | 150,000 | 19,200 | 14,400 | 120 | 90 |
| 9/16-12 | 120,000 | 15,500 | 11,600 | 110 | 80 | 150,000 | 21,800 | 16,350 | 150 | 110 |
| 18 | 120,000 | 17,300 | 12,950 | 120 | 90 | 150,000 | 24,400 | 18,250 | 170 | 130 |
| 5/8-11 | 120,000 | 19,200 | 14,400 | 150 | 110 | 150,000 | 27,100 | 20,350 | 210 | 160 |
| 18 | 120,000 | 21,800 | 16,350 | 170 | 130 | 150,000 | 30,700 | 23,000 | 240 | 180 |
| 3/4-10 | 120,000 | 28,400 | 21,300 | 260 | 200 | 150,000 | 40,100 | 30,100 | 380 | 280 |
| 16 | 120,000 | 31,700 | 23,780 | 300 | 220 | 150,000 | 44,800 | 33,500 | 420 | 310 |
| 7/8-9 | 120,000 | 39,300 | 29,450 | 430 | 320 | 150,000 | 55,400 | 41,600 | 600 | 450 |
| 14 | 120,000 | 43,300 | 32,450 | 470 | 350 | 150,000 | 61,100 | 45,800 | 670 | 500 |
| 1-8 | 120,000 | 51,500 | 38,600 | 640 | 480 | 150,000 | 72,700 | 54,500 | 910 | 680 |
| 14 | 120,000 | 57,700 | 43,300 | 720 | 540 | 150,000 | 81,500 | 61,100 | 1,020 | 760 |

Table of Contents

| | |
|-------------------------------------|------|
| Kit Numbers_____ | (4) |
| Introduction_____ | (5) |
| Safety_____ | (6) |
| Product Owner Responsibilities_____ | (7) |
| Disassembly_____ | (8) |
| Kit Installation_____ | (15) |
| Warranty_____ | (28) |
| Contact Information_____ | (30) |

Kit Numbers

This installation manual covers the following air ride kits.

| Kit Number | Description |
|------------|---|
| 10014749 | 2019+ international CV 4500/5500/6500 – 2-stage Front - 4" Lift - 2WD |

Introduction

Important

It is important that the entire installation instructions be read thoroughly before proceeding with installation.

Before painting open every box and locate all parts. There are several smaller bushing pieces and bolts that are packaged separately inside the main box.

Product Installer Responsibilities

Installer is responsible for installing this product in accordance with Kelderman Mfg. Inc. specifications and installation instructions.

Installer is responsible for providing proper installation of vehicle components and attachments as well as required or necessary clearance for suspension components, axles, wheels, tires, and other vehicle components to ensure a safe and sound installation and operation of this product.

Definition of Terms

Warning: Indicates a potentially hazardous situation which, if not avoided, could result in death or serious injury.

Caution: A potential hazardous situation may result in property damage.

Note: Provide information or suggestions that help correctly perform a task.

Torque: When italicized "*torque*" alerts the installer to tighten fasteners to a specified value.

Equipment Required:

Angle Finder

Tape Measure

Cutoff Wheel

Air Chisel

Jack Stands

Ratchet Straps

A Heavy Duty Automotive Hoist is Highly Recommended

Safety

Your Safety and the Safety of Others is Very Important.

Read and understand all safety precautions and instructions before installing this product.

CAUTION: Trucks Equipped with Parking Sensors or Other Like Devices.

Relocation of these devices will alter the field of view. It is the responsibility of the owner to understand how these changes affect the operation of these systems.

WARNING: Components Under Pressure.

Bleed all pressure from the air system before performing any maintenance or service. Serious injury could occur if components are removed while system is pressurized.

WARNING: Careless Installation Can Result in Serious Injury or Property Damage

Wear eye protection.

Disconnect the battery before doing any work on the vehicle.

Work on flat level ground.

Ensure truck is properly supported by jack stands. Never work under a vehicle supported only by hydraulic jacks.

Take precautions when lifting product. Due to the size and weight of this product two people are recommended for installation.

Never work directly under the product until it has been securely fastened to the vehicle.

Avoid sharp, hot, and moving components when routing electrical cables and air lines.

If drilling inspect both sides of the surface and remove/relocate any objects located in the way.

Ensure all bolts are properly tightened before driving.

Product Owner Responsibilities

Product owner is solely responsible for pre-operation inspection, periodic inspections, maintenance, and use of the product as specified by Kelderman Mfg. Inc. Of particular importance is the re-torque of fasteners. This re-torque must be performed within 90 days or 1000 miles of this product being put into service.

The Kelderman Air Suspension is fully automatic in controlling the height of the chassis when properly installed. No Manual Intervention to control air pressure or ride height is needed during the course of normal operation.

The compressor switch must be on for the compressor to operate. With the switch in the on position the compressor will run when the tank pressure drops below 90psi, and continue to run until tank pressure reaches 125psi.

The low pressure warning light indicates a severe drop in tank pressure (*below 45psi*) immediate corrective action should be taken to determine the cause of air loss. Compressor switch should be turned off if low pressure warning light remains on even after the compressor has run for a normal period of time. **NOTE:** The low pressure warning light can come on briefly when the "Dump" feature is being used.

During difficult starting circumstances, (*extremely cold weather*) it is recommended to turn the compressor switch off until the vehicle is running, to limit current draw on the battery.

When operating in temperatures below freezing it is important to purge moisture contained within the air tank on a daily basis. This is done by opening the petcock or pulling the lanyard on the air tank. Failure to purge moisture can cause the system to freeze and not operate properly.

Product owner is responsible for "down time" expenses, cargo damage, and all business costs and losses resulting from a warrantable failure.

Service Intervals

First 1,000 Miles

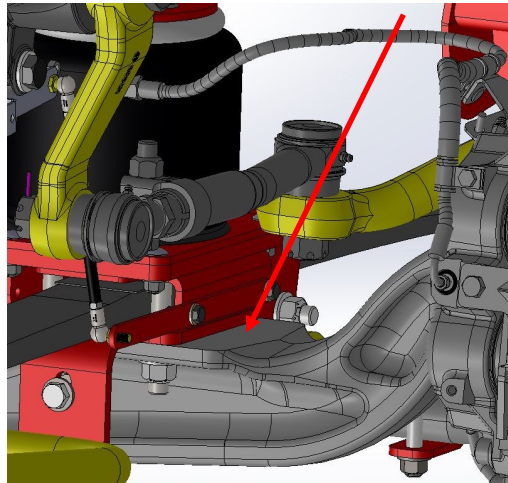
- Check Ride Height $\pm 1/4"$
- Check for air leaks around fittings.
- Check for any loose or rubbing hoses and wires.
- Re-torque all hardware.

Every 30,000 Miles

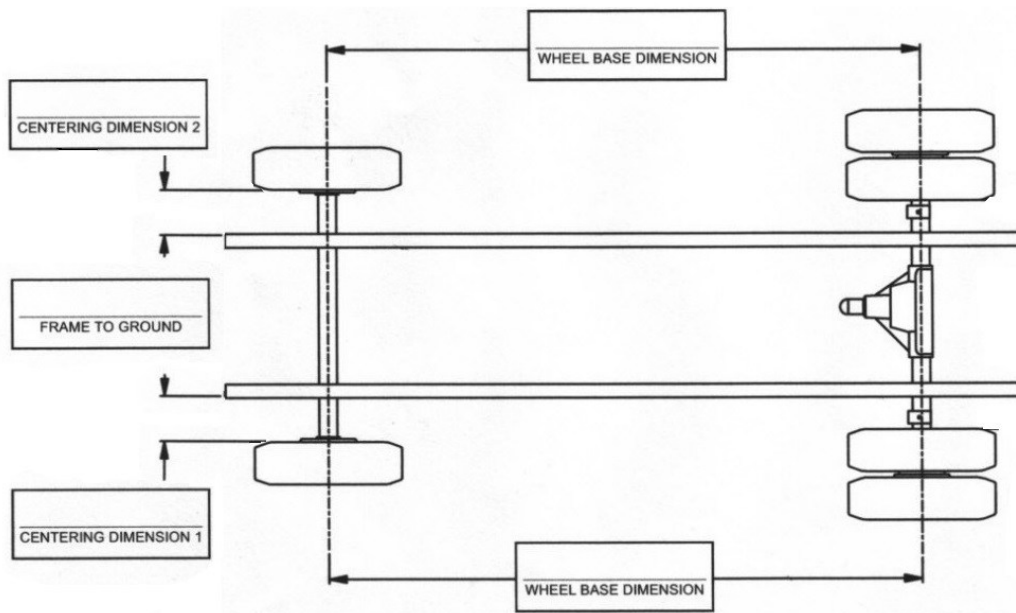
- Check Ride Height $\pm 1/4"$
- Check for air leaks around fittings.
- Grease panhard bar rod ends (*heim*)
- Inspect trailing arm bushings and panhard bar bushings for wear; replace if required.

Disassembly

1. With the vehicle on flat level ground measure the angle of your axle. Using an angle finder, place on face of the axle. The angle of the axle will need to be set back to this measurement after installation.

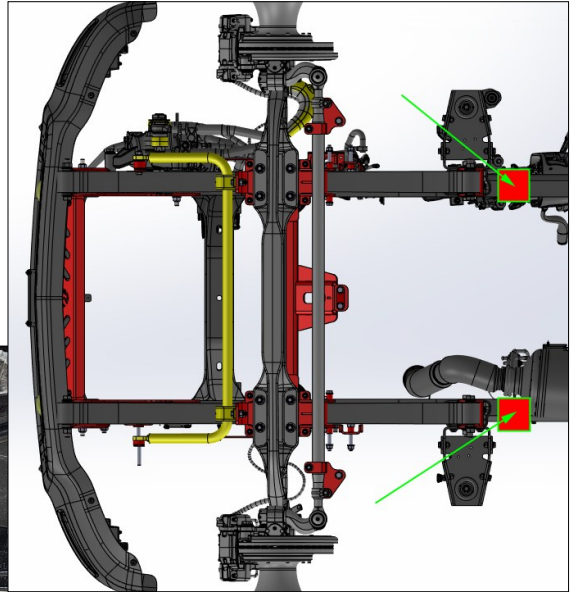


2. Take the following measurements for future reference. These measurements will be used to adjust the suspension after installation. Centering dimension one and two are to be taken from the rim to the frame.



It is highly recommended to use a professional automotive hoist to perform this installation procedure. The weight distribution of an unloaded 2 Wheel Drive 6500 is approximately 5,100 pounds on the front axle. This amount may vary depending on Original Equipment options.

Further installation procedures may require lifting the chassis in relation to the axle for additional maneuverability, as in the installation of the airbags.



The green arrows indicate the target zone for lift pads to accomplish this installation.

Note: The passenger side Exhaust hanger will need to be removed to achieve pad position-



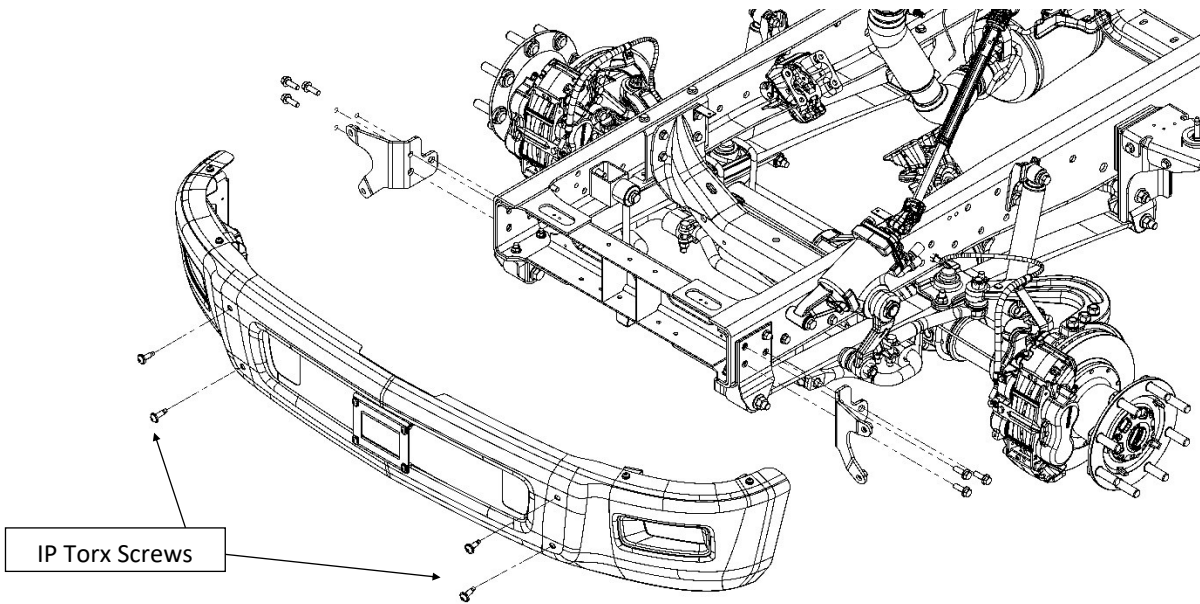
A set of ramps may be required to position the chassis so that the hoist does not impact the steps on the side of the vehicle. Tall hoist outriggers will be necessary to engage the frame in the above shown target zones.

3. Apply the parking brake. Break loose the front lug nuts, but do not remove.
Lift the front of the vehicle just enough to take the weight off the leaf springs.
Place jack stands under the frame and chock the front tires so the vehicle won't roll.

4. Remove inner fender liner. Remove as many panels as is necessary to afford maximum access to the front axle.



5. Remove the front bumper. These screws will be 45IP Torx style screws. Maintain them for reinstallation.



6. Unbolt and remove the shocks.

Note: If optioned remove the factory sway bar, end links, and end brackets.



7. Remove the drag link, 2WD Pitman Arm (19402239), and Steering Arm (10014923).

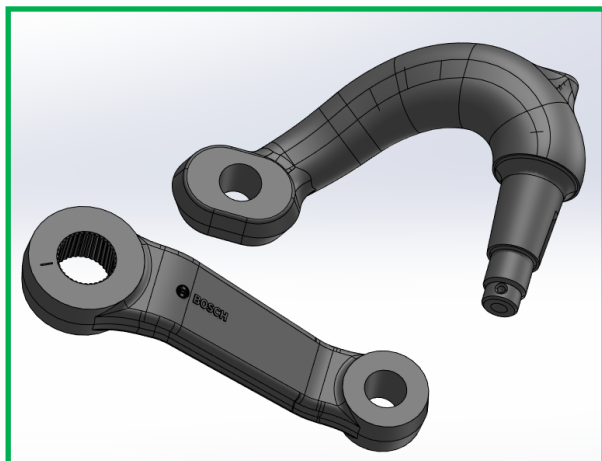


Heating may be required to remove the steering arm. Use appropriate safety procedures for torch operation. Use an air hammer on the castle nut to remove the arm.

Do not hammer on the threaded area of the arm or distort the threads.



Utilize a puller to remove the Pitman Arm.

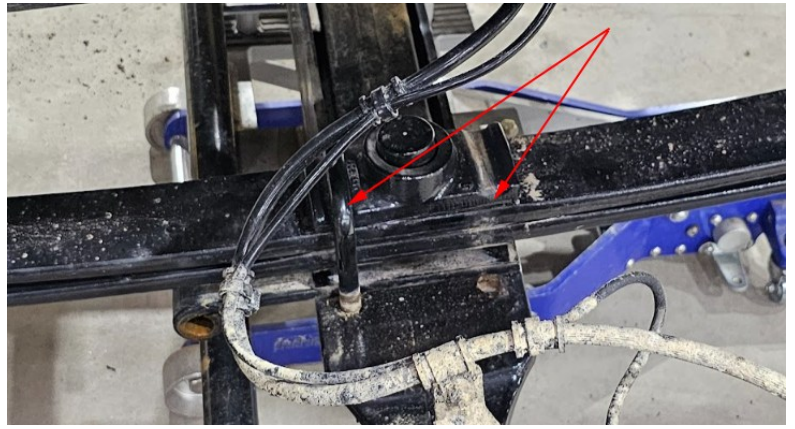


You will need to send both the Factory Pitman Arm and Steering Arm back to Kelderman to be machined.

You will receive a box with a shipping label to ship these to us for modification.

We will expedite the processing of these and return them to you.

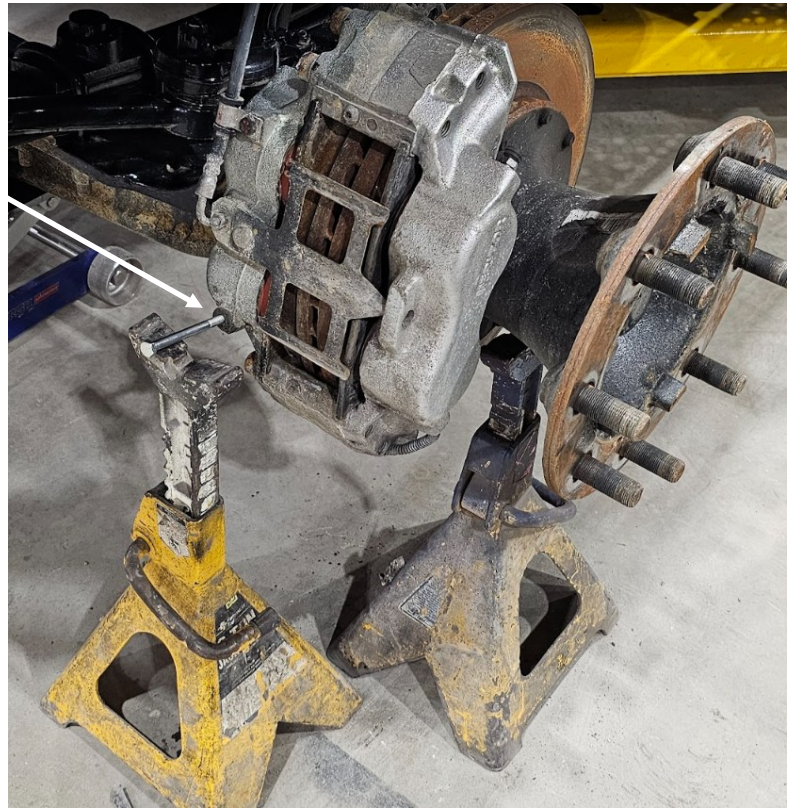
8. Remove the U-Bolts from the axle.
Remove the Bump Stops.



9. **Support and secure the axle prior to the removal of the leaf springs. The axle is unstable without the leaf springs and may roll off jack stands.**

Shown is a 5/16-18 x 3-1/2 Hex Head Cap Screw threaded into a spare threaded hole on the brake caliper. This allows the orientation of the axle to be supported. Use a ratchet strap to secure the axle to the jack stand. This will prevent the axle from shifting and potentially causing injury once the Leaf Springs have been removed.

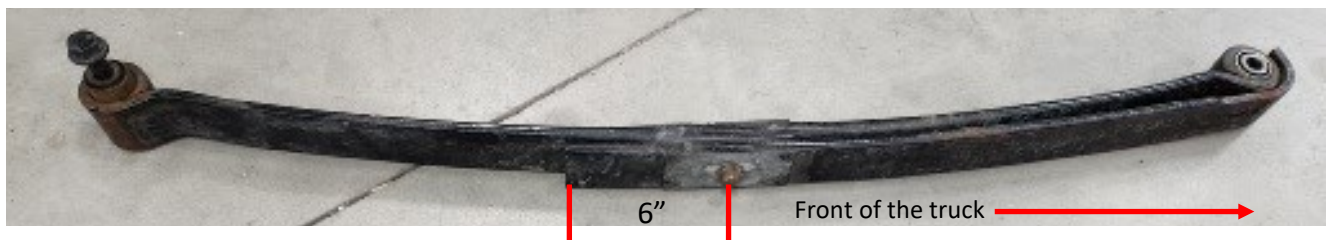
Remove leaf springs and shackles from the frame. The leaf spring will be modified and re-used. Remove the shackles from the leaf spring. Maintain the OEM Shackle Bolts.



Support the axle as shown, both on the Driver and Passenger side of the vehicle.

10. Modify the leaf springs. Cut the lower spring only, do not modify both leaves.

Cut the leaf spring so there is 6" from center pin as shown below.



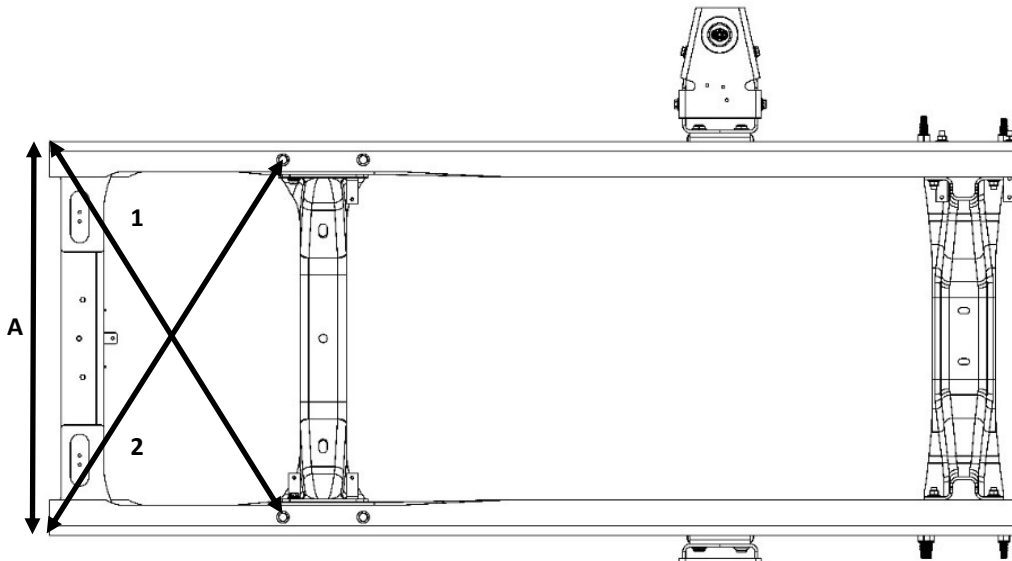
11. Mark, measure, and note the frame width at the front crossmember. Using those same marks measure the frame diagonally too check for square. These measurements will be compared against when installing the side plates.

Frame Width (A): Front _____

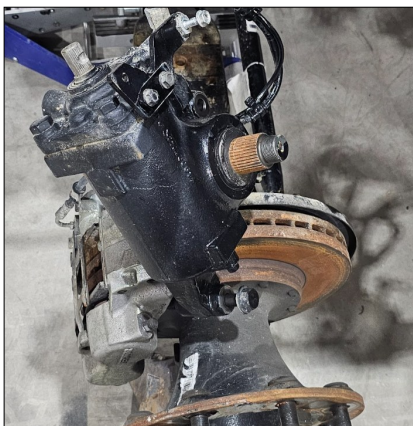
Diagonal Measurement #1 _____

Diagonal Measurement #2 _____

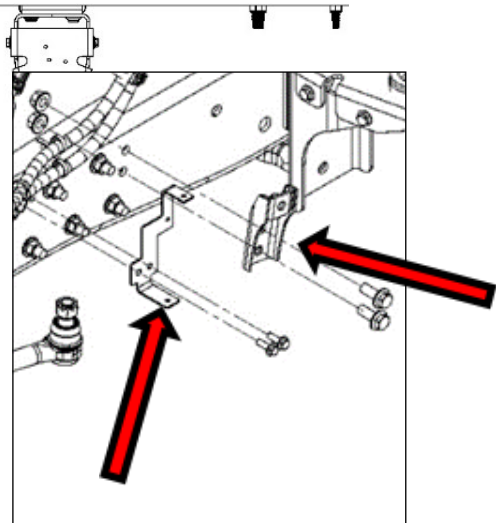
These dimensions will be used in the event of accidental misalignment, which may occur if all the bolts are removed from the crossmembers simultaneously. We strongly advise performing all disassembly and assembly actions one side at a time to avoid the possibility of this occurring. These dimensions will assist in correcting this condition should it occur.



12. Remove the shock brackets and the power steering line bracket from the frame.



Note: You will remove steering box on drivers side as well. Secure it to the Brake caliper with zip ties.



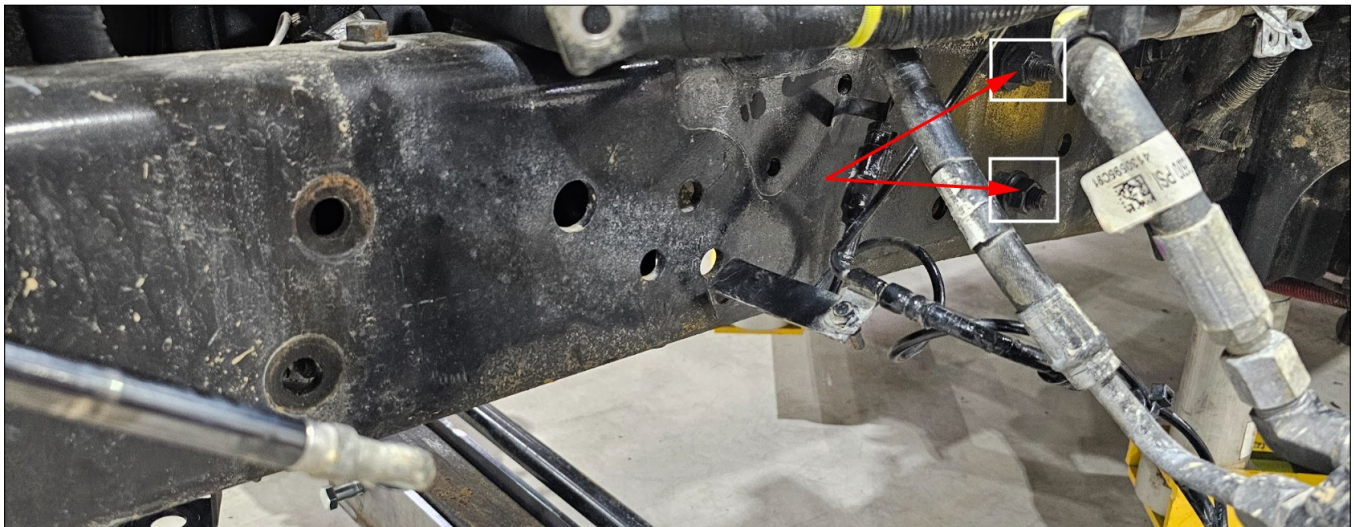
NOTE: At this point it is recommended to only remove parts from one frame rail and install new components before moving to the opposite side.

13. Support the first and second crossmembers. Remove the front spring hanger and bumper bracket from the frame.

Remove the two bolts that fasten the second crossmember to the lower flange on the frame rail. Remove the front bolt first, Install the front spring hanger (10014930 - Installation Step One). Remove the rear bolt second, Install the Upper Bag Mount (Install Step Three). In this way, the crossmember will not be left in an unsecured state, and should not allow for misalignment of the frame rails to occur.



Do not remove the two rear bolts on the rear motor mount.



14. Remove the Huckbolts using a cutoff wheel. Replacement screws, nuts, and washers are provided.

Instructions will read from the Driver's Side of the vehicle, unless otherwise specified. Repeat this method on the passenger side of the vehicle.

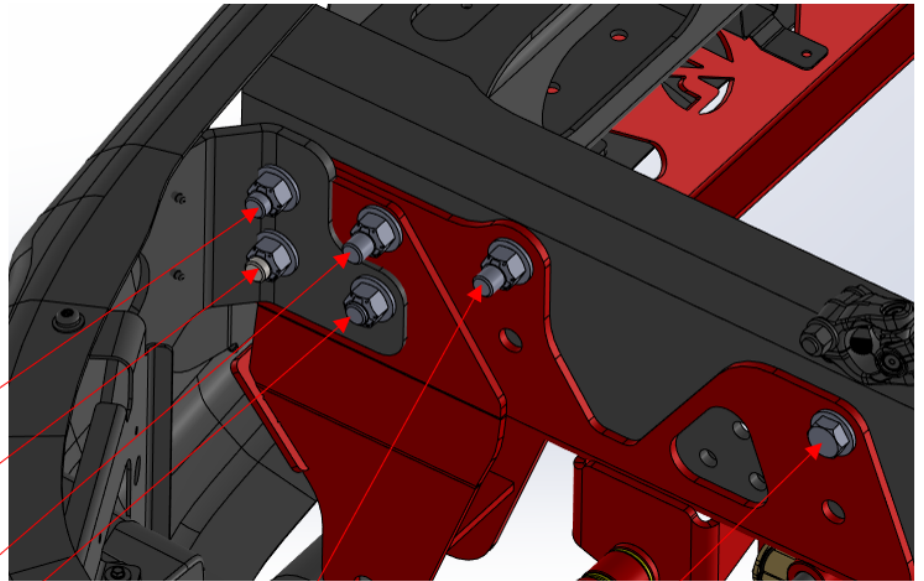
Kit Installation

The GM 4500-6500 2WD Cab Chassis may come equipped with front tow hooks. There will be two different fastener lengths specified depending on this equipment option. Installation begins with the Driver's Side of the vehicle, moving front to rear.

1. Install front spring hangers using provided hardware (10014938-DS).

Each bolt fastener has two corresponding washers and one corresponding Top Distorted Lock Nut.

Special attention should be made to their orientation, unless otherwise noted.



5/8-18 x 2-1/2

5/8-18 x 3-1/2 with hooks
5/8-18 x 3 without hooks

5/8-18 x 2-1/2

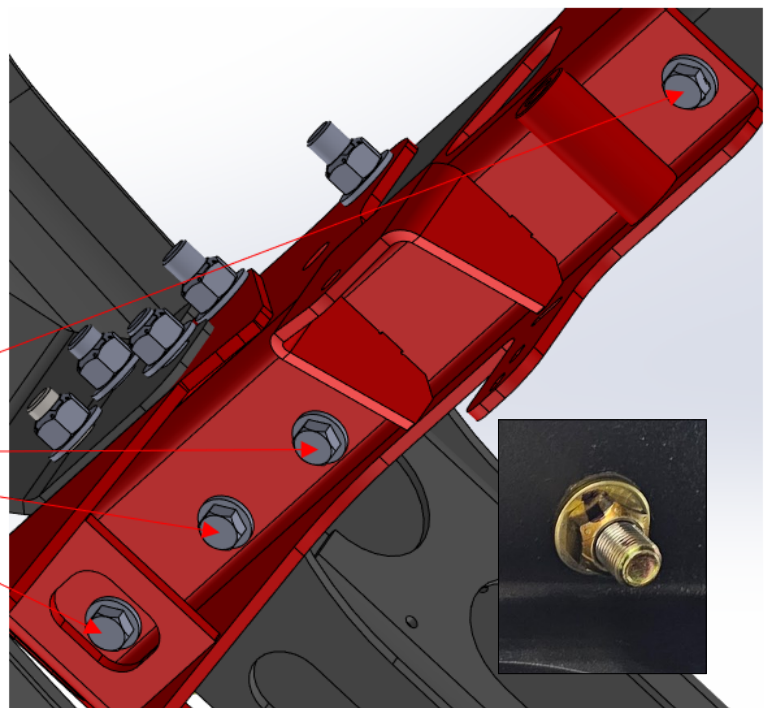
5/8-18 x 3

5/8-18 x 2

5/8-18 x 2
Faces outside
inwards

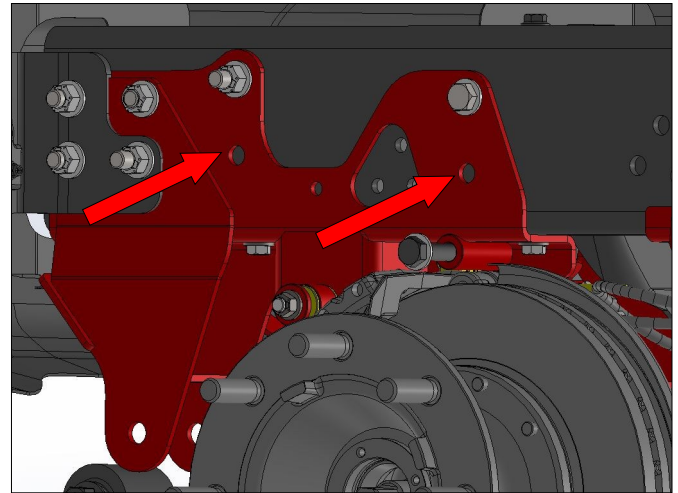
The order in which these fasteners are tightened does not matter, however we recommend marking the bolts with a Sharpie or similar marker to keep track of which bolts have been fully tightened.

Tighten all fasteners.



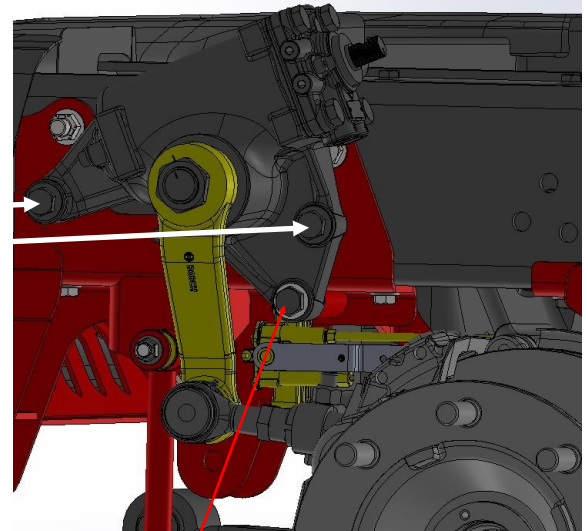
1/2-20 x 2
Orientation does not
matter

- Use the front spring hanger/side plate as a drill template. Drill two (2) 11/16" holes for the new steering box location.

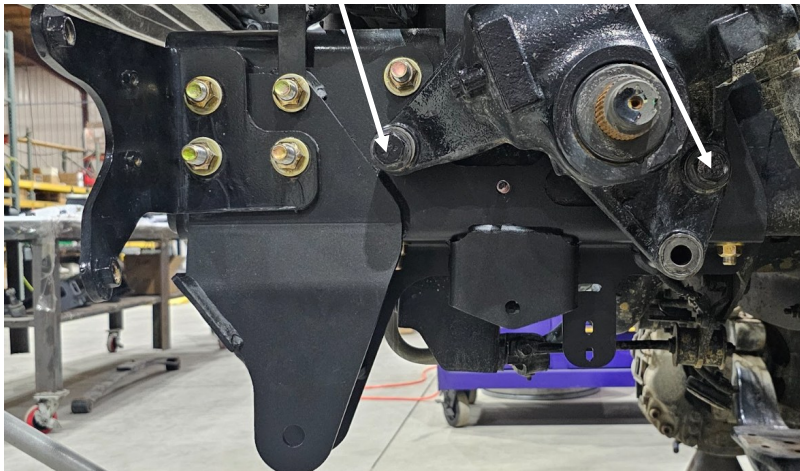


Install steering box in the new holes.

Note: There are two OEM bolts that are reused for steering box mounting.



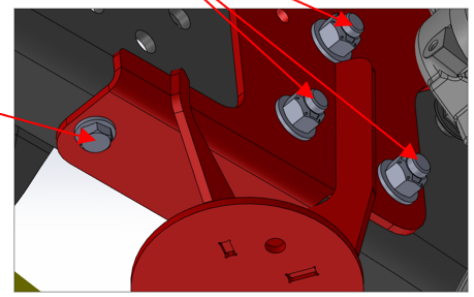
5/8-18 x 6-1/2



5/8-18 x 2

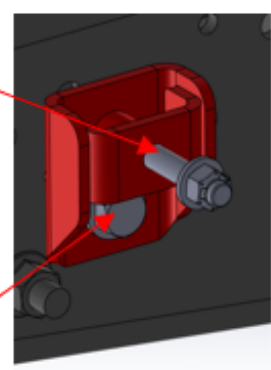
- Install the Upper Bag Mount
Install Driver's Side Shock Bracket
Tighten all securing fasteners.

1/2-20 x 2



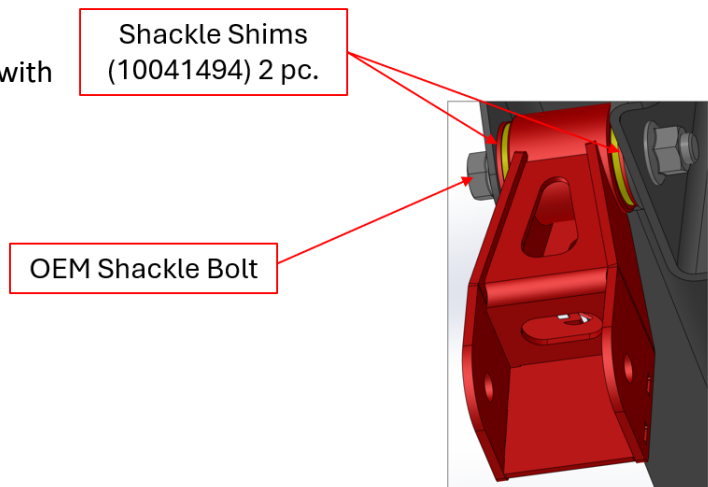
1/2-20 x 4-1/2
Shock Mounting

5/8-18 x 1-1/2



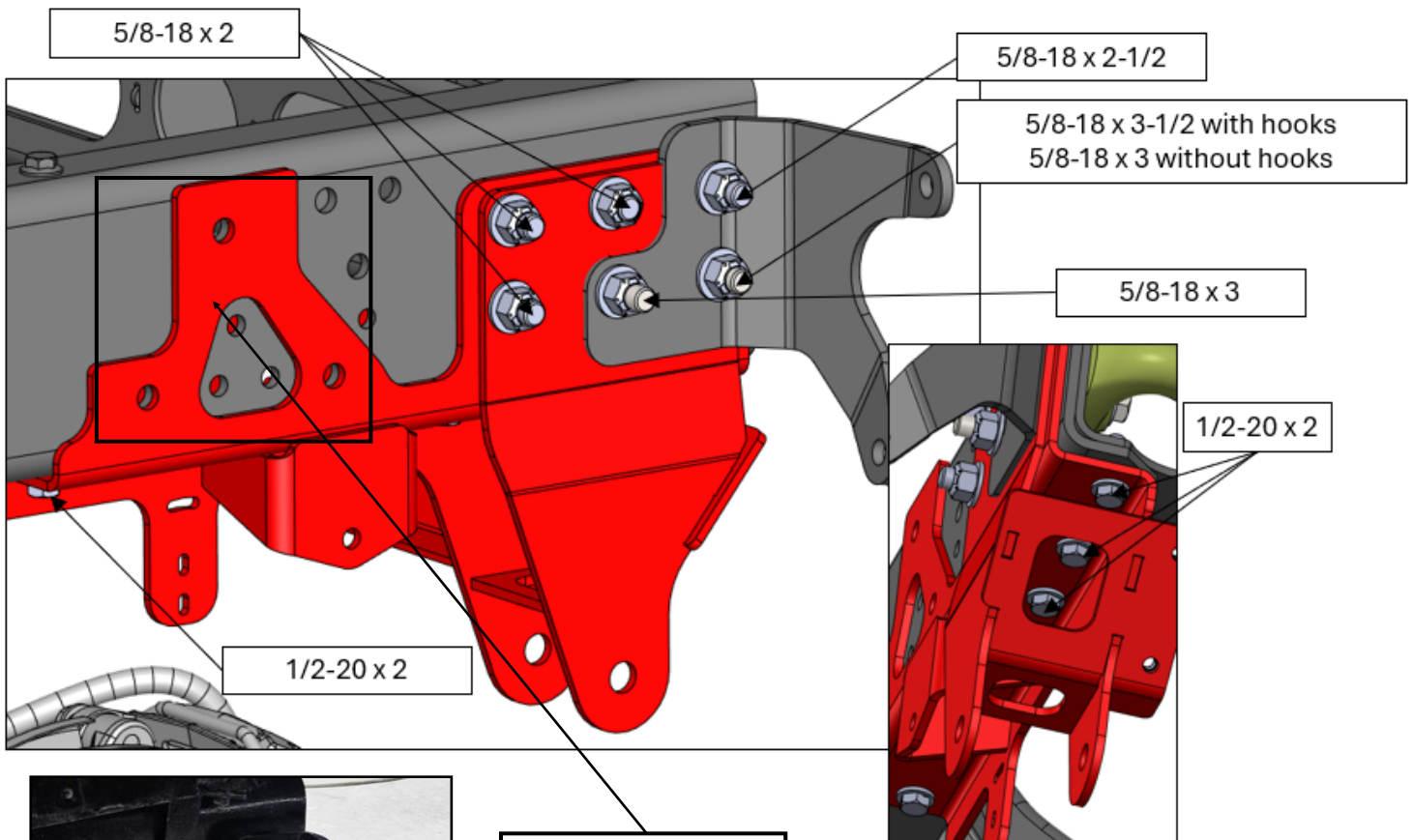
4. Install a Rear Spring Shackle (10014778)

These shims may need to be forced into position with a small rubber mallet.



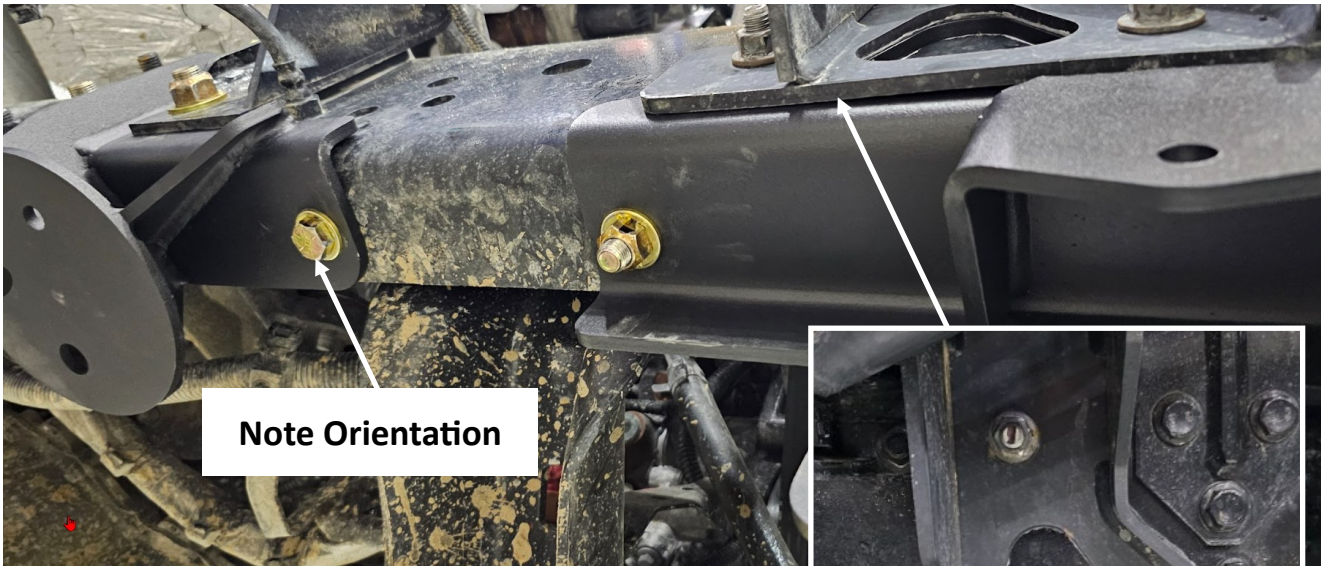
Passenger Side of the Vehicle, moving Front to Rear. Following the same procedure as the driver's side.

5. Install Front Spring Hanger (10014772), OEM Bumper Mount, and Tow Hook (if equipped).



Airbox Mount
See Note on
Page 18

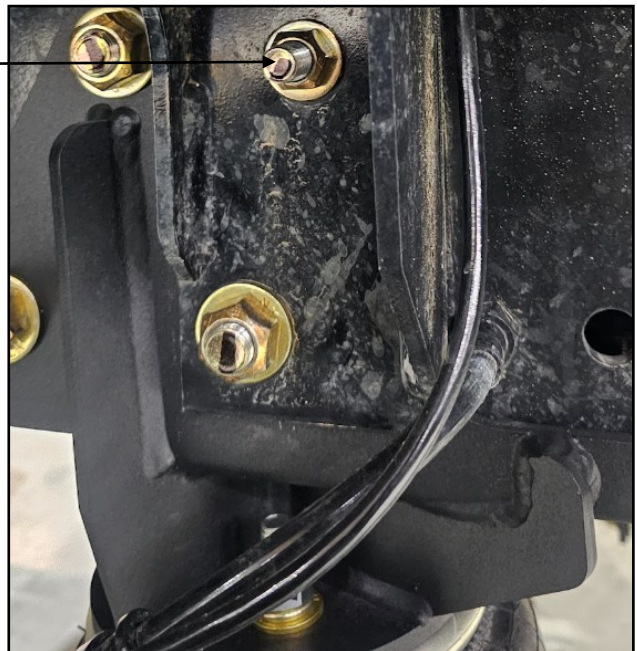
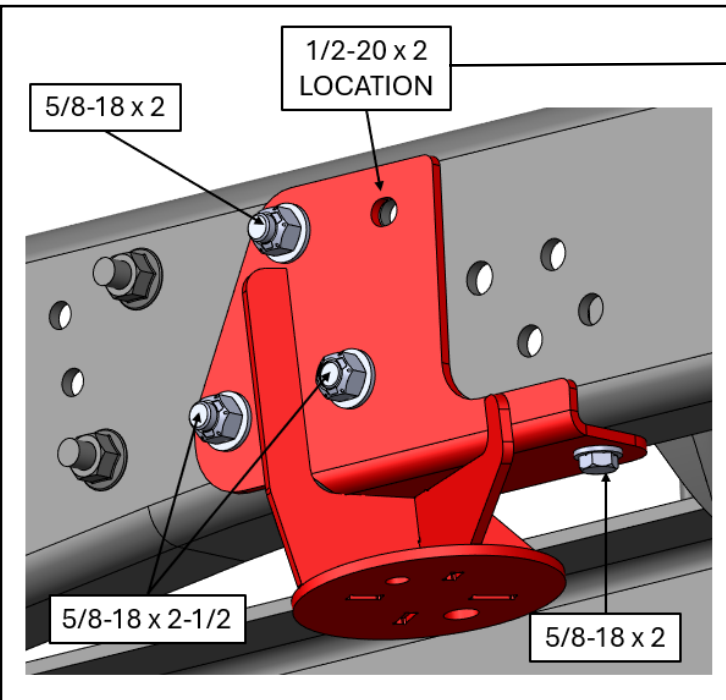




Note Orientation

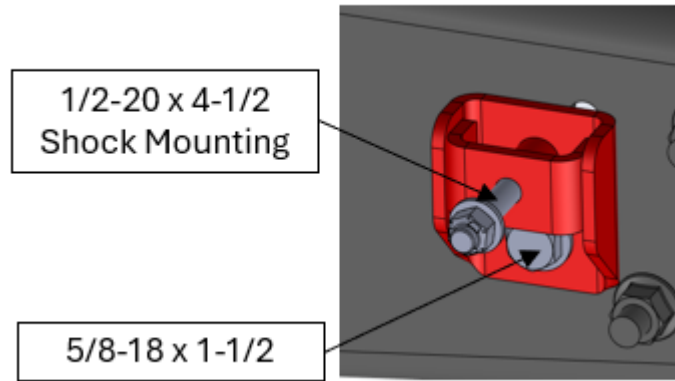
An Important note: Remove the forward airbox OEM fasteners first. Do not remove the rear airbox mount until Step 6. (Headache prevention)

Place the Passenger Front Spring Hanger and secure the front mounting screws. Replace the OEM Screws.



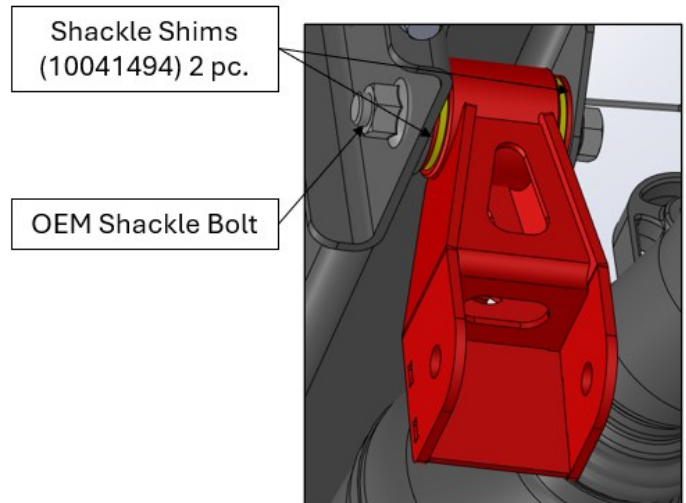
6. Remove the rear Airbox mounting screws. Install the Passenger Side Upper Bag Mount. Tighten all fasteners.

7. Install the Passenger Side Shock Mount



8. Install a Rear Spring Shackle (10014778)

These shims may need to be forced into position with a small rubber mallet.

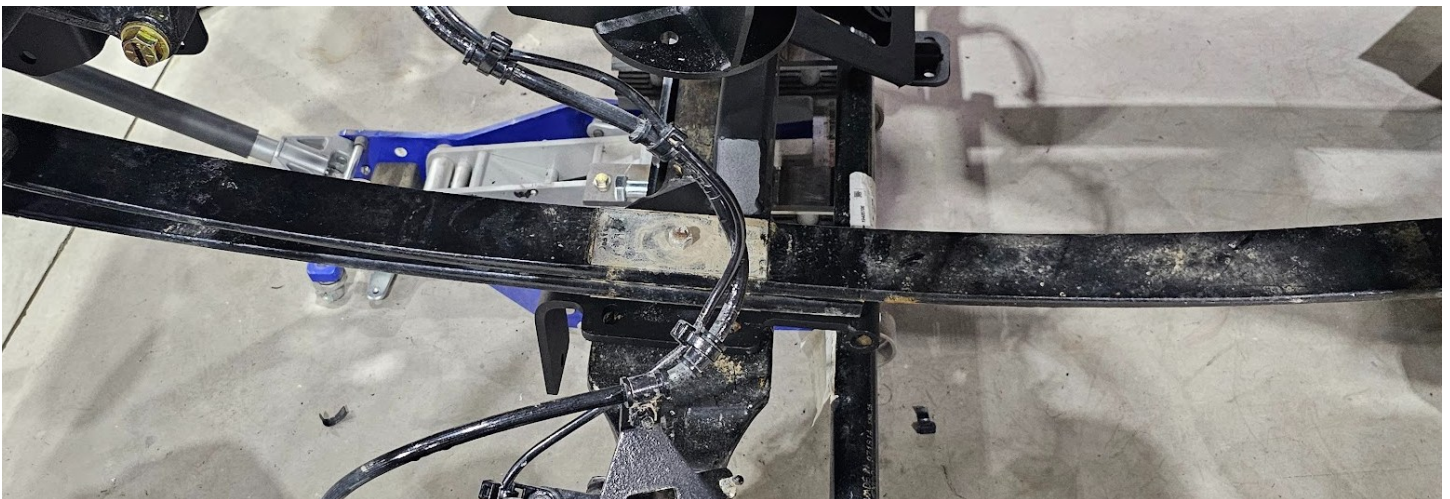


The following steps will describe assembling the axle to the steering stabilizer, lower bag mounts, Air Bags, and the reinstallation of the modified leaf springs.

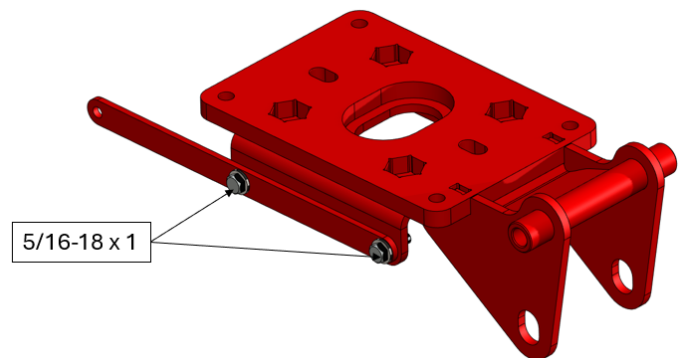
9. Install the Steering Stabilizer Bracket as shown below.



10. Shown below is the passenger side variant of the modified leaf spring. These are unwieldy and heavy. Positioning the leaf as shown and rolling the leaf into place facilitates safe placement.
- Set the modified driver's side leaf spring on steering stabilizer plate using the dowel on the leaf spring to locate. Stabilize the leaf by engaging the rear leaf bushing in the rear shackle and secure it with an OEM Shackle Bolt and Nut. Secure both sides in this manner. Leave the front shackle(s) unsecured.



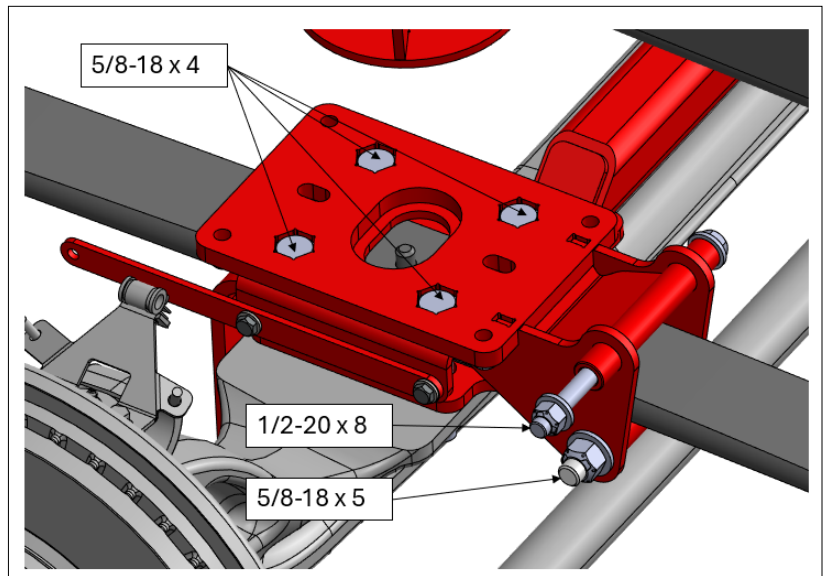
11. Prior to mounting Lower Bag Mounts to the Leaf Springs, we recommend assembling the Sensor Brackets to the Bag Mount.
- Pre-assemble the Passenger Side as well.
- It is difficult to access the fasteners once the bag mount is in position.



12. Install the Driver's Side Lower Bag Mount as shown and fasten through the Axle Forging with 4 5/8-18 x 4 Hex Head Cap Screws and associated washers and Nuts.

Do not secure the fasteners. Mounting the Airbags to the Upper Bag Plate will require some flexibility.

13. Mount the Airbag to the Bag Mounting Plate. Visually align the Stud and Air fitting to coincide with two notches in the Bag Mounting Plate. Tighten the 1/2-13 x 3-1/2 Hex Bolt with a wrench or Ratchet. Do not use an impact wrench of any type. Over torque could damage the airbag.

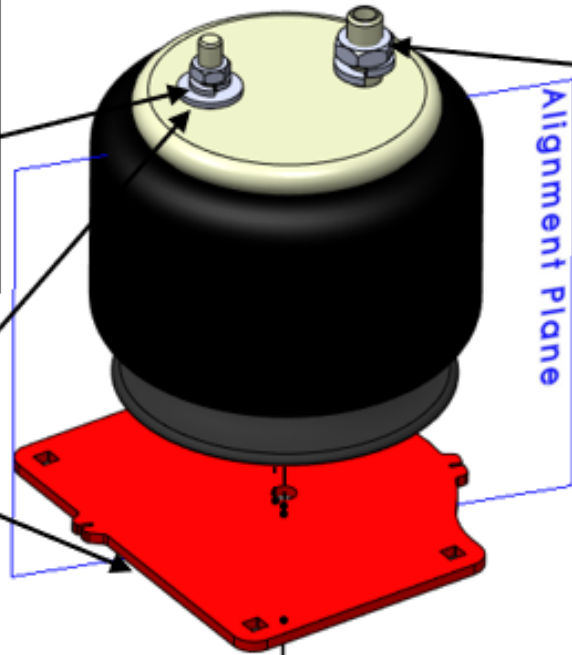


1/2-13 Hex Nut
1/2 Split Lock Washer
1/2 Flat Washer

Install these in the next process.

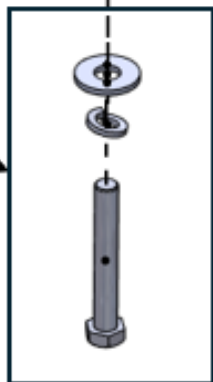
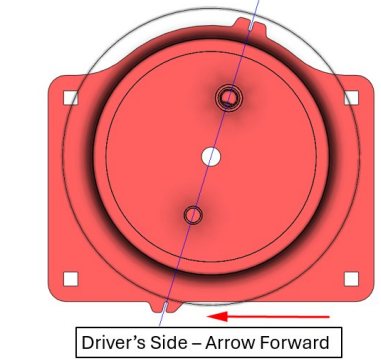
Stud position related to the Bag Mounting Plate

1/2-13 x 3-1/2
1/2 Split Lock Washer
1/2 Flat Washer



3/4-16 Hex Jam Nut
3/4 Split Lock Washer
3/4 Flat Washer

Install these in the next process.

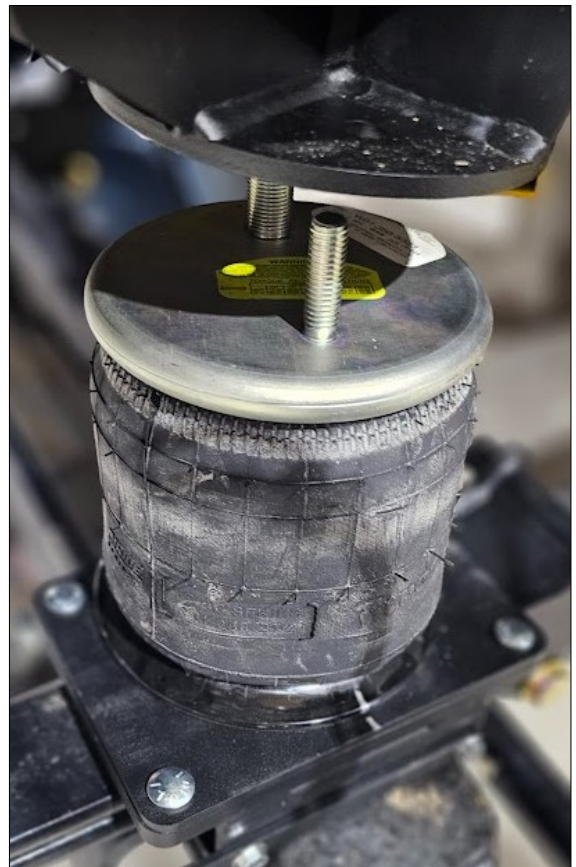


Target Alignment shown above.

Note the position of the Stud in relation to the outside of the Bag Mounting Plate. The Notch on the flat side of the plate should be positioned towards the outside of the vehicle as shown in this **Driver's Side example**.

14. Mount the Airbag Mounting Plate to the Lower Bag Mount and secure with four 3/8-16 x 2, washers and Top Distorted Lock Nuts.

Perform the same assembly and installation procedure on the Passenger Side.



15. Lower truck slowly so the upper bag mount lines up with the studs in the air bag. Attach upper bag mount to the air bag with 1/2"-13 lock nuts and 3/4"-16 jam nuts as shown.

Secure and torque the Lower Bag Mount Screws to the Forged Axle

Install a 90° air fitting to both bags and secure, but do not overtighten. Over torquing may damage the airbag.

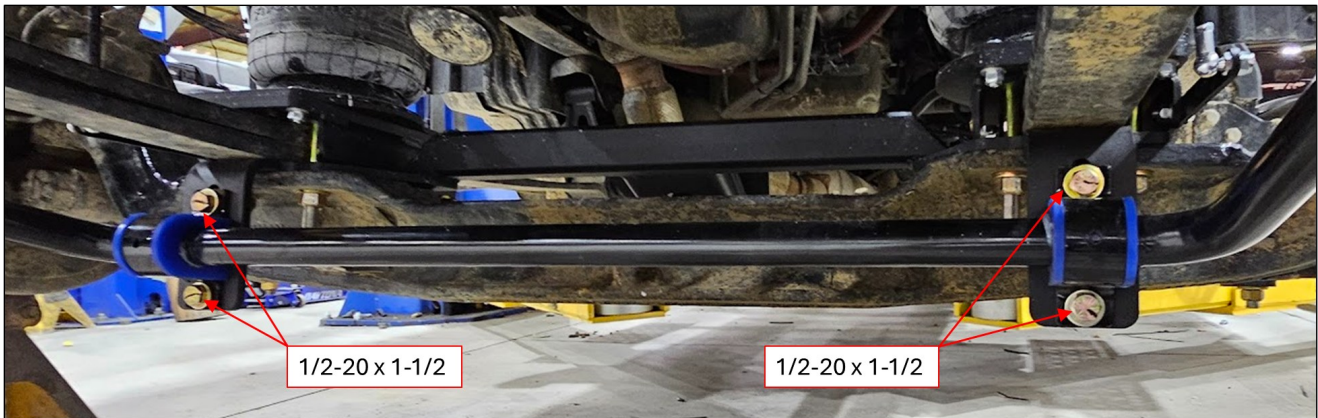
Secure all fasteners.



16. Mount the front of the Leaf Springs into the front Shackles using the reserved OEM Bolts and Nuts.

Mount the Sway Bar, D-Ring Bushings, and D-Rings to the Sway Bar/Steering Stabilizer Mount.

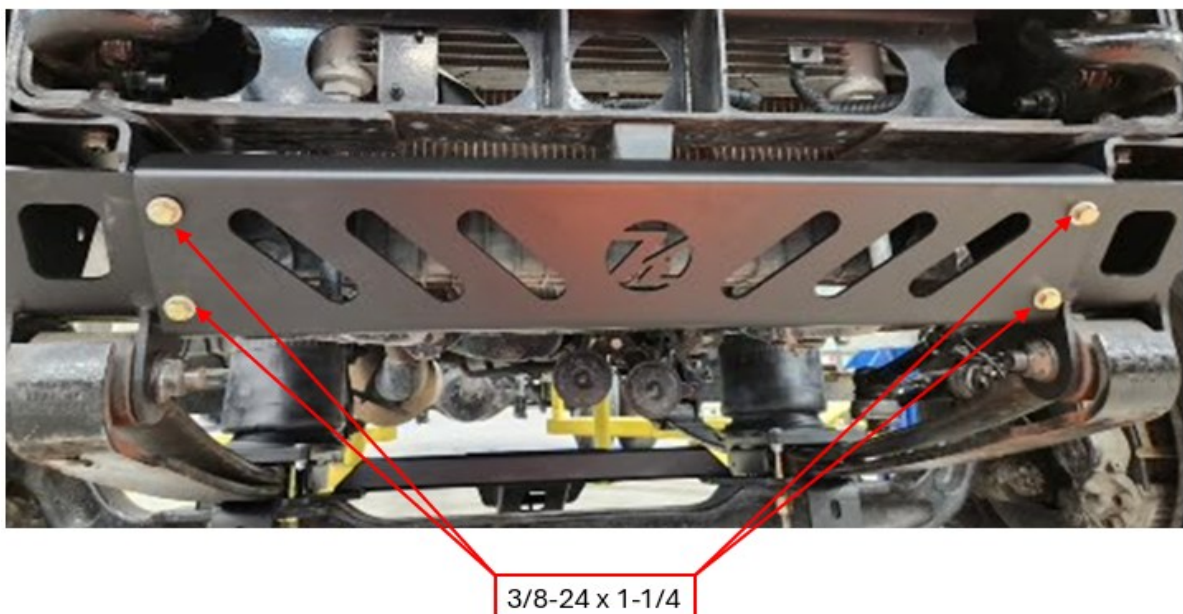
Secure all fasteners.



Secure the End Link to the Forward Spring Shackle on the Driver's and Passenger Side.
1/2-20 x 3, Washer, and one large 1/4" thick large washer (11551).
Secure the End Link to the Sway Bar.
1/2-20 x 3, Washer, and one large 1/4" thick large washer (11551).
Secure all fasteners.

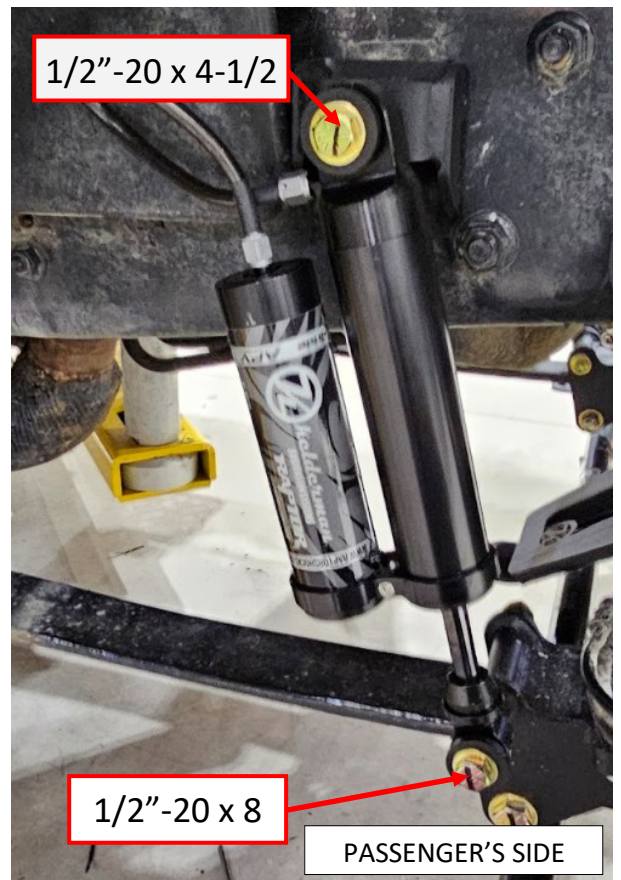
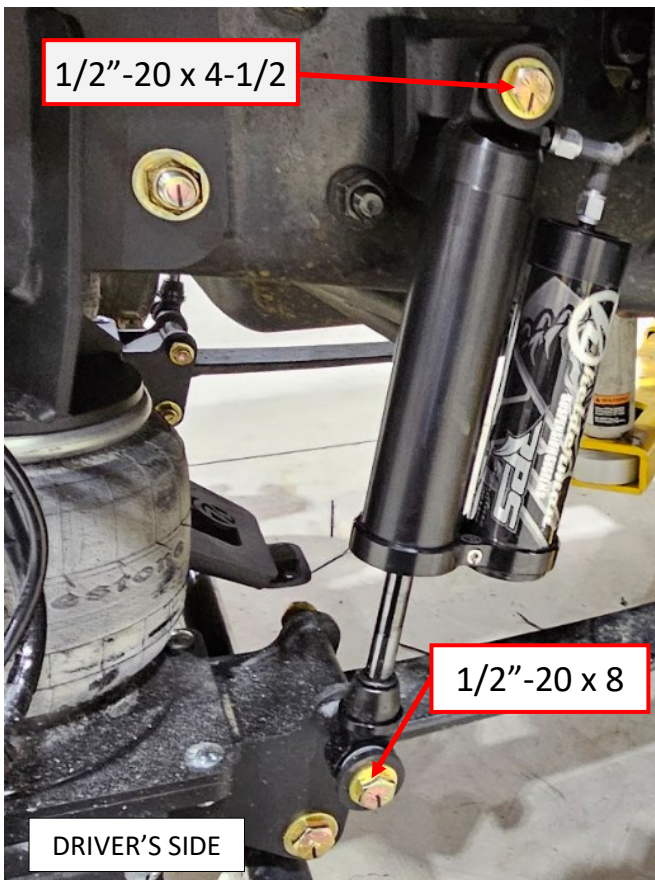


17. Install Spring Hanger Cross Brace (#10014776). It will fasten to the spring hanger weldment on each side of the truck with 3/8"-24 x 1-1/4" bolts. The bumper will cover this brace.

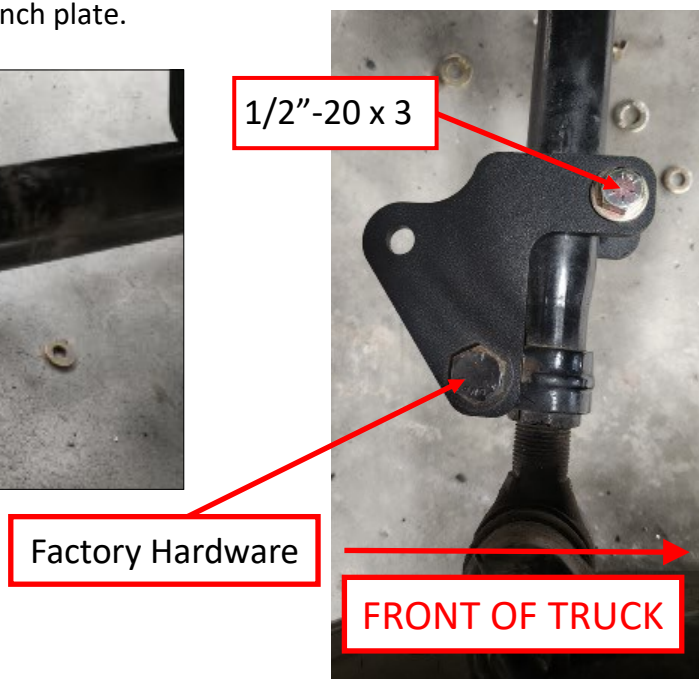
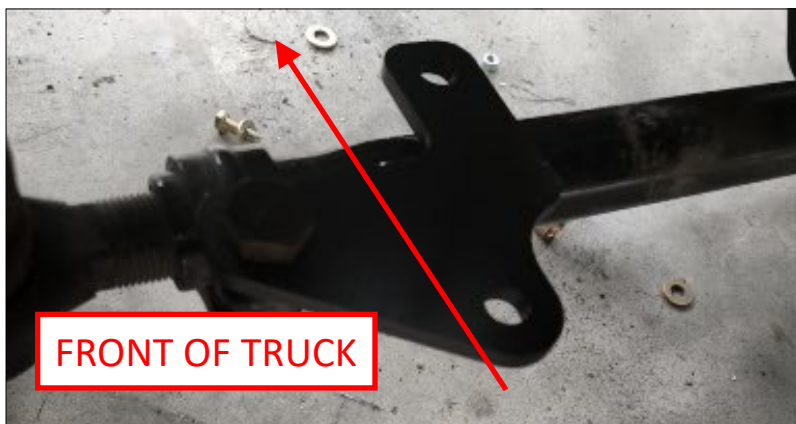


18. Install the Shocks (#10135 LH/RH). Shocks will install to upper shock mount and to the bushing on the lower bag mount. Fasten with 1/2"-20 x 4-1/2 and 1/2"-20 x 8 bolts. Fasten reservoir to shock with piggy back clamps (80253) and hardware (13502). Check for clearance around moving parts.

Secure all fasteners.



19. Install Steering Stabilizer Shock Mounts (#10013958-DS & 10013956-PS). Fasten to steering link bar with 1/2"-20 x 3" bolts and use factory bolt for pinch plate.

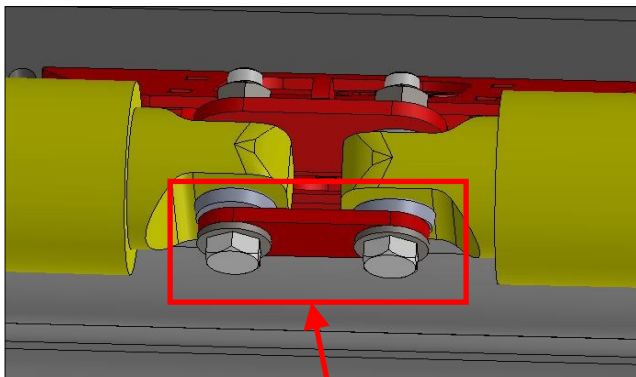


Install the Remanufactured Pitman Arm (10014760).

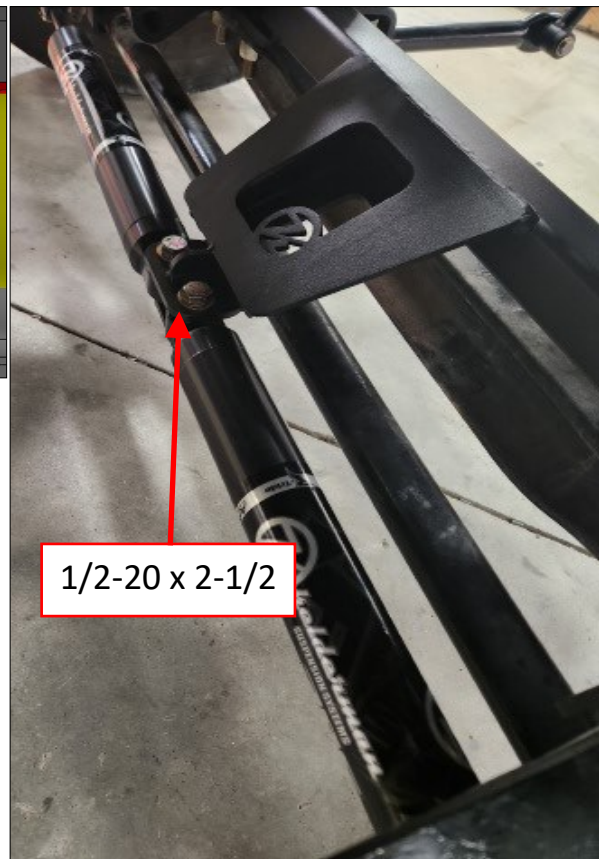
Install the Remanufactured Steering Arm (10014923).



20. Install Steering Stabilizer Shocks (#10094-LH/RH or #985-24-068) and Shock Strap (#20227). Fasten shocks with 1/2"-20 x 3" bolts in the center and 1/2"-20 x 2-1/2" bolts on the outsides.



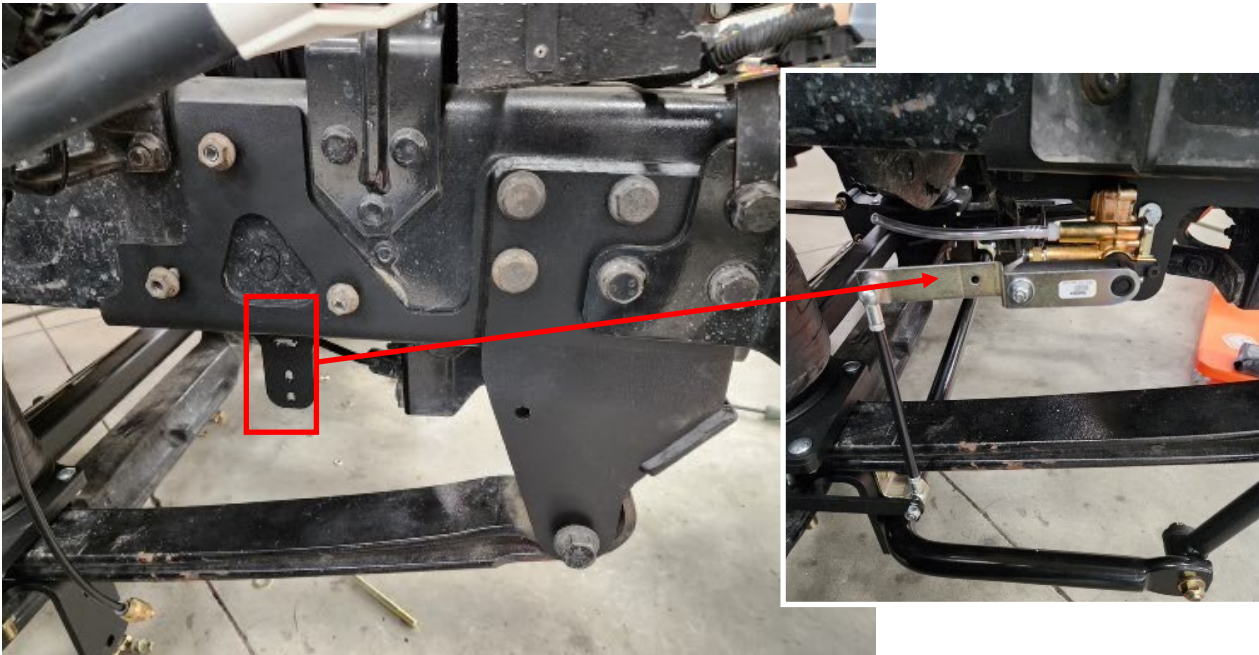
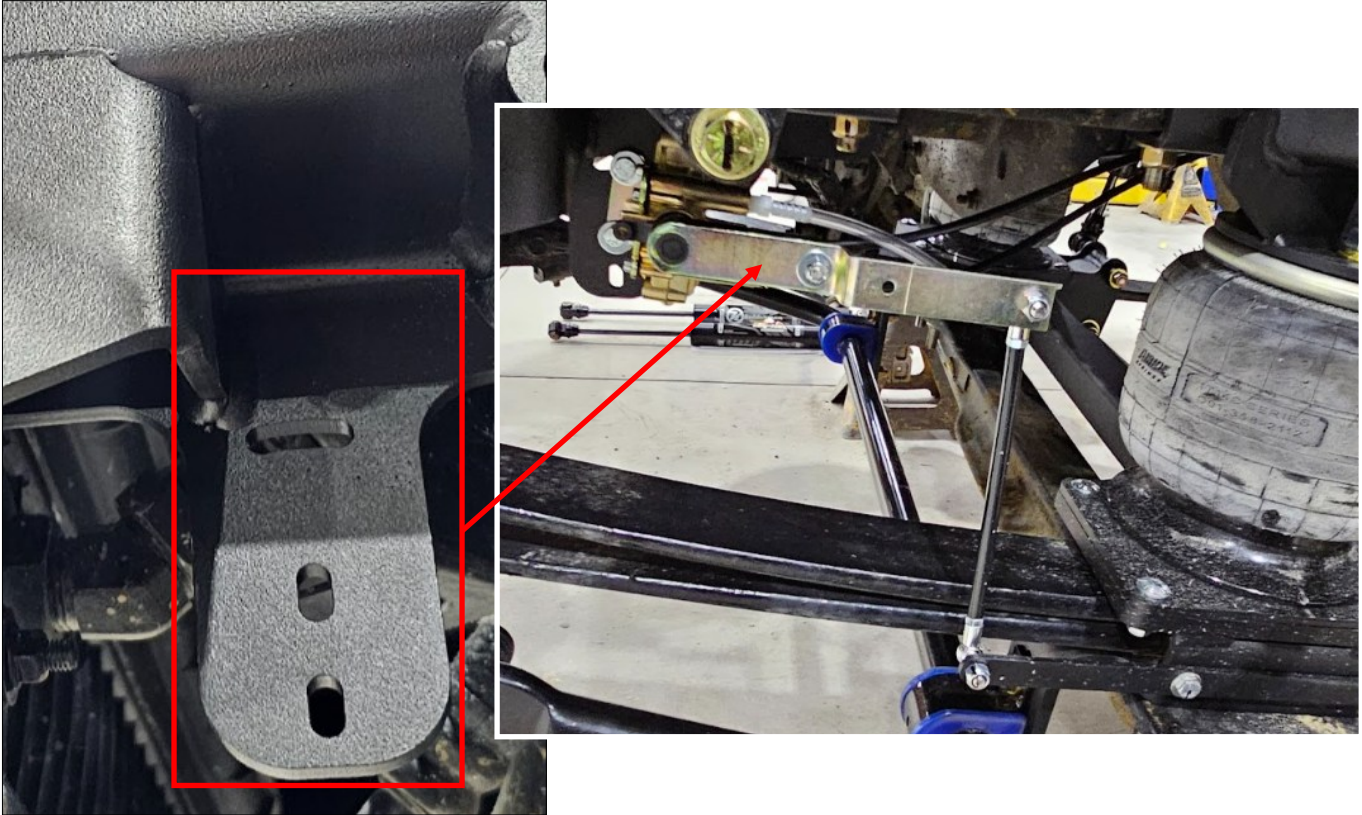
Shock Strap



1/2-20 x 2-1/2



21. Install the Mechanical Height Control Valves (#80077) and Linkages (#51743). Install Ball Studs (#80073) in the sensor arms and on the height control valves. Sensor bar stud should be installed inward and height control valve ball outward. Linkage will attach to each ball stud. (**NOTE:** Make sure to wind sensor arm 5-6 times clockwise and counter clockwise before installing on truck. Also, air bag ride height 7").



22. Re-install air box, fender liners, and front bumper. Re-use factory bolts when installing these parts. Be aware the slotted holes in the bumper may require elongation with a die grinder prior to reinstallation



23. Dump air and steer to check for clearance on all moving parts. Ex. Shock reservoirs, Pitman arm, Brake lines, and power steering lines.

**Kelderman Manufacturing
Warranty Policy
2021**



Kelderman Manufacturing Product Warranties, Disclaimers, and Warnings.

Kelderman Manufacturing, Kelderman Air Suspension (Warrantor), offers a product warranty to the original retail purchaser, with which whom owns vehicle on which the unit was installed, and with Commercial wholesale purchasers. Please see below for warranty terms.

It is the **Installer** and **Sellers** responsibility to review these warranties, warnings, and disclaimers with the consumer prior to installation.

Retail Customers:

3-year limited warranty from original invoice date for defects in materials and workmanship related to fabricated parts, i.e., upper or lower bag mounts or pan hard bar.

1-year limited warranty from original invoice date for defects on purchased parts, i.e., compressors, air bags, or a part that comes from an outside supplier.

Some products may come with their own warranties supplied by their manufacturer. If so, that warranty is passed onto you as the consumer. Please keep your original invoice as it will be needed for that warranty.

Warrantor reserves the right to request any product to be returned for further review/inspection before approving claims. In the case of a requested return, Warrantor shall provide shipping instructions.

Commercial Customers:

3-year/100,000-mile limited warranty from the date the unit was put into service for defects in materials and workmanship related to fabricated parts, i.e., upper or lower bag mounts or pan hard bar.

1-year/50,000-mile limited warranty from the date the unit was put into service for defects on purchased parts, i.e., compressors, air bags, or a part that comes from an outside supplier.

Labor will also be covered for commercial customers only. Labor is only a coverable expense, as long as part is covered under warranty program. Labor Rate is payable for \$75/hr, and an invoice must be supplied in order to be paid.

Warrantor must be contacted for warranty authorization before any diagnostic work or repairs are performed. At that time, Warrantor will provide diagnostic assistance and authorization for the repairs if warrantable. Any unauthorized diagnostic work performed before contacting Warrantor will not be covered under the warranty program, if deemed unreasonable. Defective parts must be returned to Kelderman Manufacturing as per warranty program, unless otherwise stated.

Kelderman Technical Line 641-673-5396 x130



Kelderman Warranty Line 641-673-5396 x135

Monday – Friday 7:00 am to 4:00 pm CST

Kelderman Manufacturing
Warranty Policy
2021



Warranty Terminations

The following actions or events will result in the automatic termination of this warranty and relieve Kelderman Manufacturing from any and all obligations under this warranty:

- Attempting to repair or alter the product in any way after purchase.
- Misuse or neglect of the product including accidents, improper installation, or application.
- Failure to operate or abuse vehicle in anyway, as determined by Warrantor.
- Vehicle being operated outside the recommended ride height as predetermined by Kelderman Manufacturing and set forth clearly by installation instructions.
- Vehicle has combination and/or substitution of other suspension systems in lieu of Kelderman products.

Warranty Does Not Cover

The following are items Warrantor will not cover in case of warrantable part.

- Finish of part, i.e., powder coat, paint, or plating.
- Warrantor is not obligated to cover any "down time" for vehicles to due warranty parts and/or availability of warranty parts.
- Damages to vehicle related/non-related to the installed Kelderman Air Suspension.
- Excessive freight charges, i.e., Next Day Air. As seen to be determined by Warrantor.

Warning

Kelderman Air Suspension Systems are designed to be installed, and run at the recommend ride heights provided by Kelderman Manufacturing. Failure to do so may cause premature wear and inhibit the suspension system from operating as designed. This may cause a vehicular accident leading to severe injury or death.

Disclaimer

Kelderman Manufacturing reserves the right to supersede, discontinue, re-design parts and/or applications and finishes of powder coat or paint as deemed necessary without written notice.

- Kelderman Manufacturing tries to ensure that suspension parts you receive fit the vehicle they were designed for, however due to unknown vehicle manufacturer's production changes and/or inconsistencies, We cannot be responsible for 100% fitment.
- All products not specifically called out can be referenced by call the warranty line listed at the bottom of the page.

Kelderman Technical Line 641-673-5396 x130



Kelderman Warranty Line 641-673-5396 x135

Monday – Friday 7:00 am to 4:00 pm CST

Contact Information

Kelderman Manufacturing appreciates your business. We strive to meet the needs of our customers by providing the highest quality products. If you have any questions concerning our products please call or email us at the following:

2686 Highway 92

Oskaloosa, Iowa 52577

Phone: (641) 673-5396

Email: info@kelderman.com



kelderman
