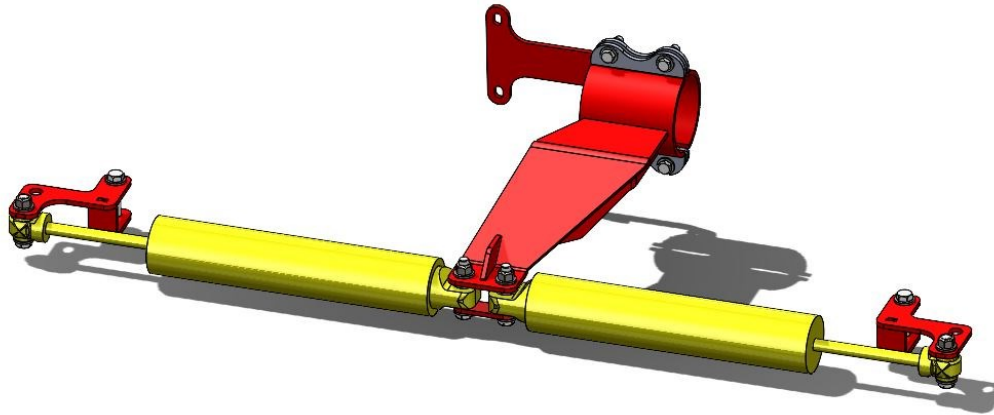


INSTALL INSTRUCTIONS

KIT #10007147

KIT - STEERING STABILIZER -
DUAL SHOCK :

2019+ GM
4500/5500/6500 - CC -
4WD - FRONT



kelderman



TABLE OF CONTENTS

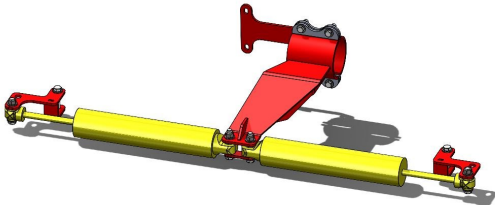
- ♦ KIT NUMBERS.....(3)
- ♦ INTRODUCTION.....(4)
- ♦ SAFETY.....(5)
- ♦ PRODUCT OWNER RESPONSIBILITIES.....(6)
- ♦ KIT INSTALLATION.....(7-8)
- ♦ PARTS KEY.....(9)
- ♦ NOTES.....(10)
- ♦ CONTACT INFORMATION.....(11)



KIT NUMBERS

- THIS INSTALLATION MANUAL COVERS THE FOLLOWING KITS

| KIT NUMBER | DESCRIPTION |
|------------|---|
| 10007147 | STEERING STABILIZER - DUAL SHOCK: 2019+ GM 4500/5500/6500 - CC - 4WD FRONT |



INTRODUCTION

IMPORTANT

- ♦ IT IS IMPORTANT THAT THE ENTIRE INSTALLATION INSTRUCTIONS BE READ THOROUGHLY BEFORE PROCEEDING WITH INSTALLATION.
- ♦ IF YOUR KIT WAS ORDERED RAW, OPEN EVERY BOX AND LOCATE ALL PARTS. THERE ARE SEVERAL SMALLER BUSHING PIECES AND BOLTS THAT ARE PACKAGED SEPARATELY INSIDE THE MAIN BOX.

PRODUCT INSTALLER RESPONSIBILITIES

- ♦ INSTALLER IS RESPONSIBLE FOR INSTALLING THIS PRODUCT IN ACCORDANCE WITH KELDERMAN MFG. INC. SPECIFICATIONS AND INSTALLATION INSTRUCTIONS.
- ♦ INSTALLER IS RESPONSIBLE FOR PROVIDING PROPER INSTALLATION OF VEHICLE COMPONENTS AND ATTACHMENTS AS WELL AS REQUIRED OR NECESSARY CLEARANCE FOR SUSPENSION COMPONENTS, AXLES, WHEELS, TIRES, AND OTHER VEHICLE COMPONENTS TO ENSURE A SAFE AND SOUND INSTALLATION AND OPERATION OF THIS PRODUCT.

DEFINITION OF TERMS

- ♦ **WARNING:** INDICATES A POTENTIALLY HAZARDOUS SITUATION WHICH, IF NOT AVOIDED, COULD RESULT IN DEATH OR SERIOUS INJURY.
- ♦ **CAUTION:** A POTENTIAL HAZARDOUS SITUATION MAY RESULT IN PROPERTY DAMAGE.
- ♦ **NOTE:** PROVIDE INFORMATION OR SUGGESTIONS THAT HELP CORRECTLY PERFORM A TASK.
- ♦ **TORQUE:** WHEN ITALICIZED "TORQUE" ALERTS THE INSTALLER TO TIGHTEN FASTENERS TO A SPECIFIED VALUE.



SAFETY

YOUR SAFETY AND THE SAFETY OF OTHERS IS VERY IMPORTANT.

- ◆ READ AND UNDERSTAND ALL SAFETY PRECAUTIONS AND INSTRUCTIONS BEFORE INSTALLING THIS PRODUCT.

CAUTION: TRUCKS EQUIPPED WITH PARKING SENSORS OR OTHER LIKE DEVICES.

- ◆ RELOCATION OF THESE DEVICES WILL ALTER THE FIELD OF VIEW. IT IS THE RESPONSIBILITY OF THE OWNER TO UNDERSTAND HOW THESE CHANGES AFFECT THE OPERATION OF THESE SYSTEMS.

WARNING: COMPONENTS UNDER PRESSURE.

- ◆ BLEED ALL PRESSURE FROM THE AIR SYSTEM BEFORE PERFORMING ANY MAINTENANCE OR SERVICE. SERIOUS INJURY COULD OCCUR IF COMPONENTS ARE REMOVED WHILE SYSTEM IS PRESSURIZED.

WARNING: CARELESS INSTALLATION CAN RESULT IN SERIOUS INJURY OR PROPERTY DAMAGE

- ◆ WEAR EYE PROTECTION.
- ◆ DISCONNECT THE BATTERY BEFORE DOING ANY WORK ON THE VEHICLE.
- ◆ WORK ON FLAT LEVEL GROUND.
- ◆ ENSURE TRUCK IS PROPERLY SUPPORTED BY JACK STANDS. NEVER WORK UNDER A VEHICLE SUPPORTED ONLY BY HYDRAULIC JACKS.
- ◆ TAKE PRECAUTIONS WHEN LIFTING PRODUCT. DUE TO THE SIZE AND WEIGHT OF THIS PRODUCT TWO PEOPLE ARE RECOMMENDED FOR INSTALLATION.
- ◆ NEVER WORK DIRECTLY UNDER THE PRODUCT UNTIL IT HAS BEEN SECURELY FASTENED TO THE VEHICLE.
- ◆ AVOID SHARP, HOT, AND MOVING COMPONENTS WHEN ROUTING ELECTRICAL CABLES AND AIR LINES.
- ◆ IF DRILLING, INSPECT BOTH SIDES OF THE SURFACE AND REMOVE/RELOCATE ANY OBJECTS LOCATED IN THE WAY.
- ◆ ENSURE ALL BOLTS ARE PROPERLY TIGHTENED BEFORE DRIVING.



PRODUCT OWNER RESPONSIBILITIES

- ◆ PRODUCT OWNER IS SOLELY RESPONSIBLE FOR PRE-OPERATION INSPECTION, PERIODIC INSPECTIONS, MAINTENANCE, AND USE OF THE PRODUCT AS SPECIFIED BY KELDERMAN MFG. INC. OF PARTICULAR IMPORTANCE IS THE RE-TORQUE OF FASTENERS.
- ◆ THIS RE-TORQUE MUST BE PERFORMED WITHIN 2500 MILES OF THIS PRODUCT BEING PUT INTO SERVICE.
- ◆ PRODUCT OWNER IS RESPONSIBLE FOR “*DOWN TIME*” EXPENSES, CARGO DAMAGE, AND ALL BUSINESS COSTS AND LOSSES RESULTING FROM A WARRANTABLE FAILURE.

SERVICE INTERVALS**FIRST 2,500 MILES**

- ◆ CHECK FOR ANY LOOSE OR RUBBING HOSES AND WIRES.
- ◆ RE-TORQUE ALL HARDWARE.

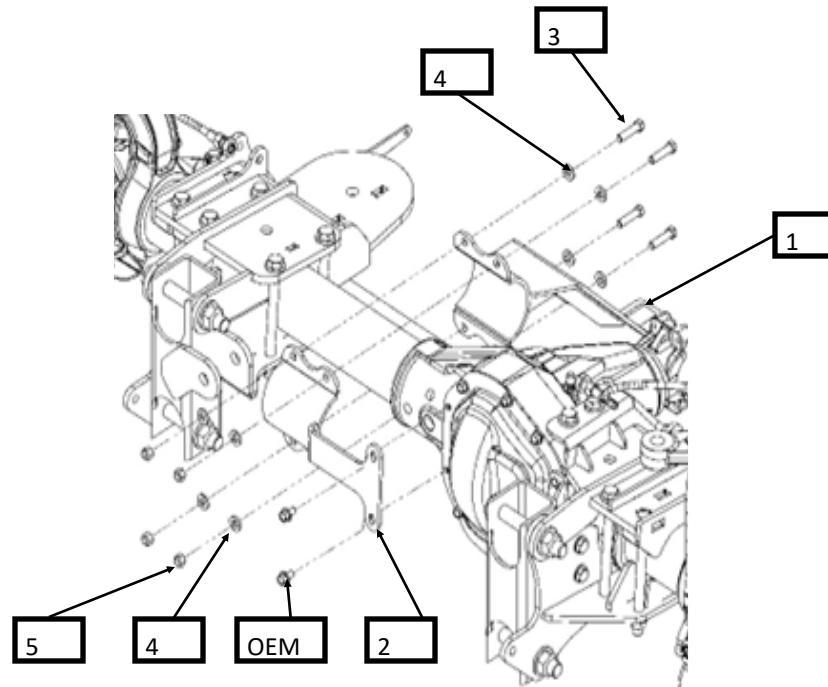
EVERY 30,000 MILES

- ◆ CHECK FOR ANY LOOSE OR RUBBING HOSES AND WIRES.
- ◆ RE-TORQUE ALL HARDWARE.



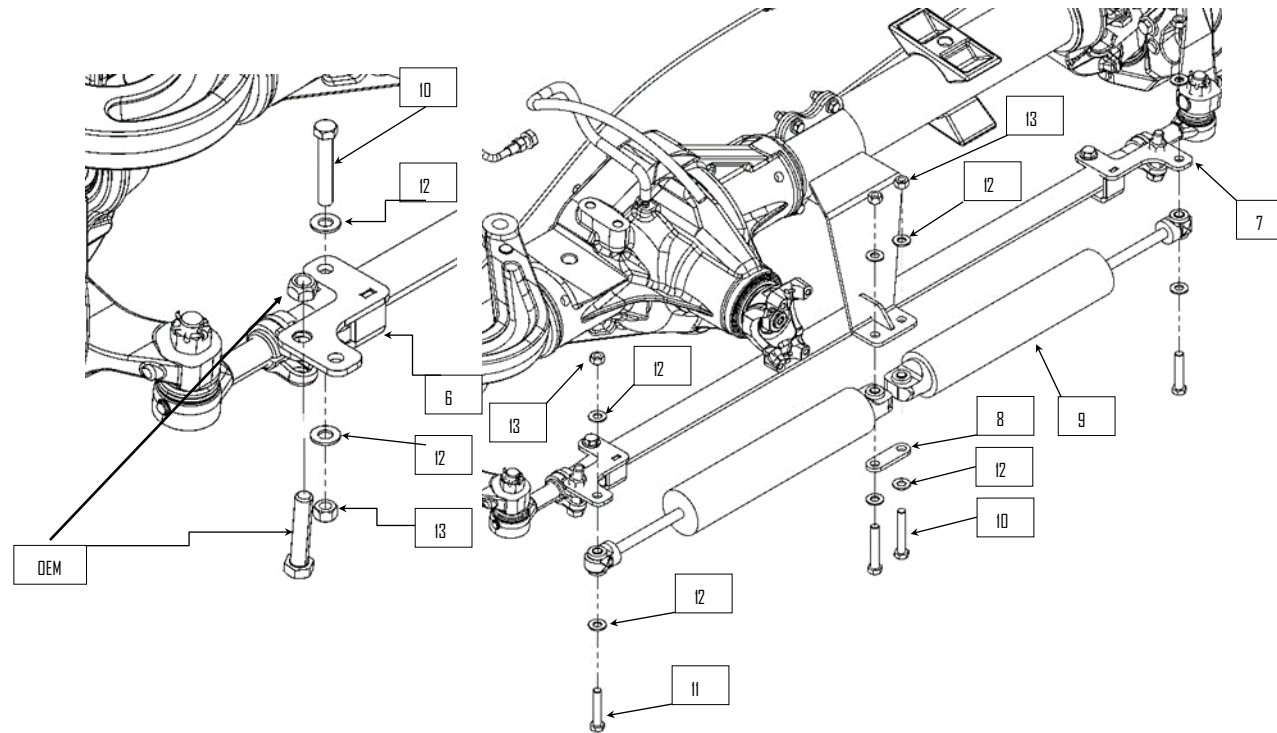
ASSEMBLY

1) you will need to remove the skid plate to access the Differential. Fasten the steering stabilizer mount (1) and clamp (2) to the axle. Use OEM differential cover bolts to position the clamp (2). Use 7/16" hardware (3, 4, & 5) to fasten around the

*kelderman*

ASSEMBLY

2) Install the tie rod brackets (6 & 7) use the OEM pinch bolts and 1/2" hardware (10, 12, & 13).



3) Fasten the Raptor monotube *shocks* (9) to the tie rod brackets (6 & 7) and the stabilizer mount (1) using 1/2" hardware (10, 11, 12, & 13).

kelderman

PARTS KEY

| | | |
|----|----------|--|
| 1 | 10007026 | WELDMENT - STEERING STABILIZER MOUNT |
| 2 | 10007033 | WELDMENT - STEERING STABILIZER CLAMP |
| 3 | 13413 | HEX BOLT: 7/16"-20 x 1-3/4" |
| 4 | 13023 | FLAT WASHER: 7/16" |
| 5 | 13123 | LOCK NUT: 7/16"-20 |
| 6 | 10007034 | WELDMENT - STABILIZER TIE ROD BRACKET (DS) |
| 7 | 10007037 | WELDMENT - STABILIZER TIE ROD BRACKET (PS) |
| 8 | 20227 | PLATE - 1/4" - STABILIZER SHOCK STRAP |
| 9 | 10003382 | RAPTOR SHOCK - MONOTUBE TWIN EYELET |
| 10 | 12021 | HEX BOLT: 1/2"-20 x 3" |
| 11 | 12017 | HEX BOLT: 1/2"-20 x 2-1/2" |
| 12 | 13024 | FLAT WASHER: 1/2" |
| 13 | 13124 | LOCK NUT: 1/2"-20 |



NOTES

kelderman



CONTACT INFORMATION



SCAN ME

SCAN QR CODE
FOR KELDERMAN
WARRANTY PAGE

KELDERMAN MANUFACTURING APPRECIATES YOUR BUSINESS. WE STRIVE TO MEET THE NEEDS OF OUR CUSTOMERS BY PROVIDING THE HIGHEST QUALITY PRODUCTS. IF YOU HAVE ANY QUESTIONS CONCERNING OUR PRODUCTS PLEASE CALL OR EMAIL US AT THE FOLLOWING:

**2686 HIGHWAY 92
OSKALOOSA, IOWA 52577**

**PHONE: 1-800-334-6150
EMAIL: INFO@KELDERMAN.COM**

SEE YOUTUBE PAGE FOR ADDITIONAL VIDEOS:
HTTPS://WWW.YOUTUBE.COM/USER/KELDERMANTRUCKS

kelderman

