

**INSTALL INSTRUCTIONS**

# ESLK1AL

## ELECTRONIC SELF LEVELING KIT



*kelderman*



**TABLE OF CONTENTS**

- ◆ **INTRODUCTION.....(3)**
- ◆ **SAFETY.....(4)**
- ◆ **PRODUCT OWNER RESPONSIBILITIES.....(5)**
- ◆ **KIT INSTALLATION.....(6-10)**
- ◆ **DETAILS.....(11)**
- ◆ **TROUBLESHOOTING.....(12)**
- ◆ **SCHEMATICS.....(13-14)**
- ◆ **NOTES.....(15)**
- ◆ **CONTACT INFORMATION.....(16)**

*kelderman*



# INTRODUCTION

## IMPORTANT

- ◆ IT IS IMPORTANT THAT THE ENTIRE INSTALLATION INSTRUCTIONS BE READ THOROUGHLY BEFORE PROCEEDING WITH INSTALLATION.
- ◆ IF YOUR KIT WAS ORDERED RAW, OPEN EVERY BOX AND LOCATE ALL PARTS. THERE ARE SEVERAL SMALLER BUSHING PIECES AND BOLTS THAT ARE PACKAGED SEPARATELY INSIDE THE MAIN BOX.

## PRODUCT INSTALLER RESPONSIBILITIES

- ◆ INSTALLER IS RESPONSIBLE FOR INSTALLING THIS PRODUCT IN ACCORDANCE WITH KELDERMAN MFG. INC. SPECIFICATIONS AND INSTALLATION INSTRUCTIONS.
- ◆ INSTALLER IS RESPONSIBLE FOR PROVIDING PROPER INSTALLATION OF VEHICLE COMPONENTS AND ATTACHMENTS AS WELL AS REQUIRED OR NECESSARY CLEARANCE FOR SUSPENSION COMPONENTS, AXLES, WHEELS, TIRES, AND OTHER VEHICLE COMPONENTS TO ENSURE A SAFE AND SOUND INSTALLATION AND OPERATION OF THIS PRODUCT.

## DEFINITION OF TERMS

- ◆ **WARNING:** INDICATES A POTENTIALLY HAZARDOUS SITUATION WHICH, IF NOT AVOIDED, COULD RESULT IN DEATH OR SERIOUS INJURY.
- ◆ **CAUTION:** A POTENTIAL HAZARDOUS SITUATION MAY RESULT IN PROPERTY DAMAGE.
- ◆ **NOTE:** PROVIDE INFORMATION OR SUGGESTIONS THAT HELP CORRECTLY PERFORM A TASK.
- ◆ **TORQUE:** WHEN ITALICIZED "TORQUE" ALERTS THE INSTALLER TO TIGHTEN FASTENERS TO A SPECIFIED VALUE.

*kelderman*



# SAFETY

**YOUR SAFETY AND THE SAFETY OF OTHERS IS VERY IMPORTANT.**

- ◆ READ AND UNDERSTAND ALL SAFETY PRECAUTIONS AND INSTRUCTIONS BEFORE INSTALLING THIS PRODUCT.

**CAUTION: TRUCKS EQUIPPED WITH PARKING SENSORS OR OTHER LIKE DEVICES.**

- ◆ RELOCATION OF THESE DEVICES WILL ALTER THE FIELD OF VIEW. IT IS THE RESPONSIBILITY OF THE OWNER TO UNDERSTAND HOW THESE CHANGES AFFECT THE OPERATION OF THESE SYSTEMS.

**WARNING: COMPONENTS UNDER PRESSURE.**

- ◆ BLEED ALL PRESSURE FROM THE AIR SYSTEM BEFORE PERFORMING ANY MAINTENANCE OR SERVICE. SERIOUS INJURY COULD OCCUR IF COMPONENTS ARE REMOVED WHILE SYSTEM IS PRESSURIZED.

**WARNING: CARELESS INSTALLATION CAN RESULT IN SERIOUS INJURY OR PROPERTY DAMAGE**

- ◆ WEAR EYE PROTECTION.
- ◆ DISCONNECT THE BATTERY BEFORE DOING ANY WORK ON THE VEHICLE.
- ◆ WORK ON FLAT LEVEL GROUND.
- ◆ ENSURE TRUCK IS PROPERLY SUPPORTED BY JACK STANDS. NEVER WORK UNDER A VEHICLE SUPPORTED ONLY BY HYDRAULIC JACKS.
- ◆ TAKE PRECAUTIONS WHEN LIFTING PRODUCT. DUE TO THE SIZE AND WEIGHT OF THIS PRODUCT TWO PEOPLE ARE RECOMMENDED FOR INSTALLATION.
- ◆ NEVER WORK DIRECTLY UNDER THE PRODUCT UNTIL IT HAS BEEN SECURELY FASTENED TO THE VEHICLE.
- ◆ AVOID SHARP, HOT, AND MOVING COMPONENTS WHEN ROUTING ELECTRICAL CABLES AND AIR LINES.
- ◆ IF DRILLING, INSPECT BOTH SIDES OF THE SURFACE AND REMOVE/RELOCATE ANY OBJECTS LOCATED IN THE WAY.
- ◆ ENSURE ALL BOLTS ARE PROPERLY TIGHTENED BEFORE DRIVING.

*kelderman*



**PRODUCT OWNER RESPONSIBILITIES**

- ◆ PRODUCT OWNER IS SOLELY RESPONSIBLE FOR PRE-OPERATION INSPECTION, PERIODIC INSPECTIONS, MAINTENANCE, AND USE OF THE PRODUCT AS SPECIFIED BY KELDERMAN MFG. INC. OF PARTICULAR IMPORTANCE IS THE RE-TORQUE OF FASTENERS.
- ◆ THIS RE-TORQUE MUST BE PERFORMED WITHIN 2500 MILES OF THIS PRODUCT BEING PUT INTO SERVICE.
- ◆ PRODUCT OWNER IS RESPONSIBLE FOR “*DOWN TIME*” EXPENSES, CARGO DAMAGE, AND ALL BUSINESS COSTS AND LOSSES RESULTING FROM A WARRANTABLE FAILURE.

**SERVICE INTERVALS****FIRST 2,500 MILES**

- ◆ CHECK FOR ANY LOOSE OR RUBBING HOSES AND WIRES.
- ◆ RE-TORQUE ALL HARDWARE.

**EVERY 30,000 MILES**

- ◆ CHECK FOR ANY LOOSE OR RUBBING HOSES AND WIRES.
- ◆ RE-TORQUE ALL HARDWARE.

***kelderman***

**BILL OF MATERIALS**

Quantity	Part Number	Description
1	51616	Weldment - AMK Compressor Mount
1	51630	Plate - 1/4" - AMK Box Mount (Left) - w/Bends
1	51631	Plate - 1/4" - AMK Box Mount (Right) - w/Bends
1	80006	Air Compressor Box Cover - Plastic
1	80011-10966	Position Magnet - 7/8" Dia
1	80339	Kelderman "AMK" Compressor, Dryer, Filter
1	80026	Wiring Harness - AMK Magnet Style
3	80032	Isolator Feet (Pair) w/Hardware
1	80045	Height Sensor - AMK "Toyota Style"
1	80083	Straight Male Connector Tube 1/4" x 1/8" - 27 NPT
35 ft	80102	Nylon Air Brake Tubing - (1/4" OD TUBE Color: Black)
1	80104	Schrader Valve 21633 AQ62-SV-4
4	80116	1/4" Tee (Plastic Fitting)
1	80325	Fitting - Female 1/8"-27 NPT to Male MID-I.D O-Ring
1	80510	Bolt Kit - Mounting Bracket Bolt Kit (Air Tank)
1	80605	Bolt Kit - AMK Sensor
1	80609	Bolt Kit - AMK Mounting Kit
2	13836	Self Tapping Screw: #10-16 X 3/4" HEX HEAD
1	14048	CS Allen Head Machine Screw: #10-24 x 1-1/4" - Z
1	14050	Nylon Lock Nut: #10-24 - Z
1	14062	Flat Washer SAE: #10 - SS

*kelderman*



## HARNES MOUNTING

To install harness...

- Connect battery negative (black wire with ring terminal) to battery (-) terminal or chassis ground.
- Connect battery positive (red wire with ring terminal and fuse holder) to battery (+) terminal or bus bar if equipped.
- Connect Key power wire to any 12v key source or ignition wire. **Recommended to tie into the key powered 12v accessory circuit with a fuse tap.** This way if a fuse blows essential vehicle functions wont be lost.
- **(Optional)** Connect white wire to ground **THROUGH** a toggle switch, momentary switch, or button. Only necessary if you want manual bag dump feature. Otherwise it is recommended to cut wire out of the harness below the loom.
- Away from heat sources i.e. exhaust, aftertreatment, oil coolers, ac coolers, etc.
- Away from rotating drivelines.
- Provide adequate strain relief for wires exiting connectors to prevent harness failure.
- Ensure harness doesn't interfere with suspension articulation.

*kelderman*



# RELAY MOUNTING

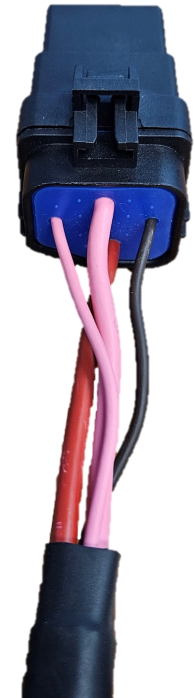
Mount Relay...

- In a way such that the wires come out of the base straight. If the wires are not straight the waterproof seal in the relay base does not work.
- In a spot generally protected from the elements.
- Away from heat sources i.e. exhaust, aftertreatment, oil coolers, ac coolers, etc.

Bad installation



Good installation



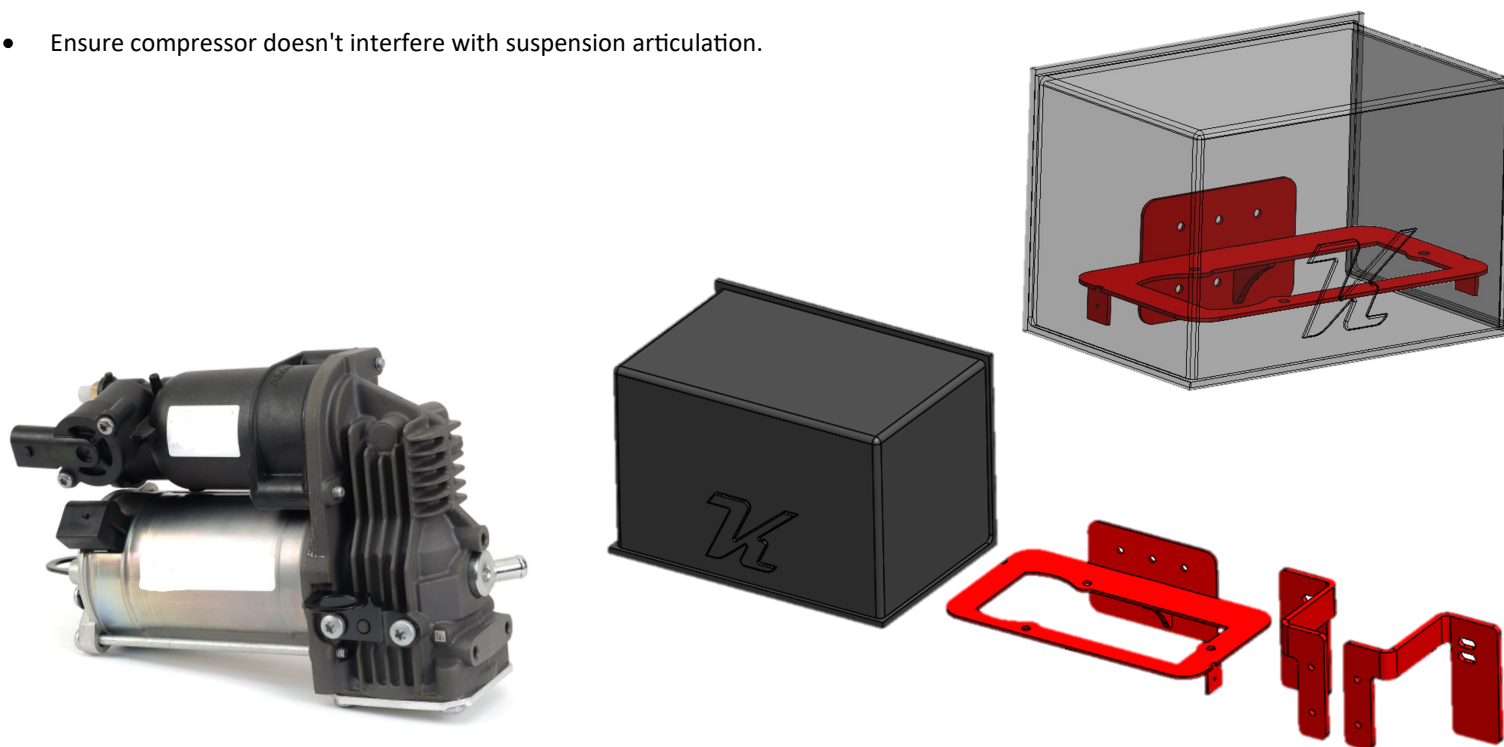
*kelderman*



## COMPRESSOR MOUNTING

Mount compressor...

- Use provided brackets to mount compressor to vehicle and mount cover using provided self tapping screws.
- in a spot generally protected from the elements.
- Away from heat sources i.e. exhaust, aftertreatment, oil coolers, ac coolers, etc.  
Compressor life will be shortened if it is too close to a heat source.
- Ensure compressor doesn't interfere with suspension articulation.

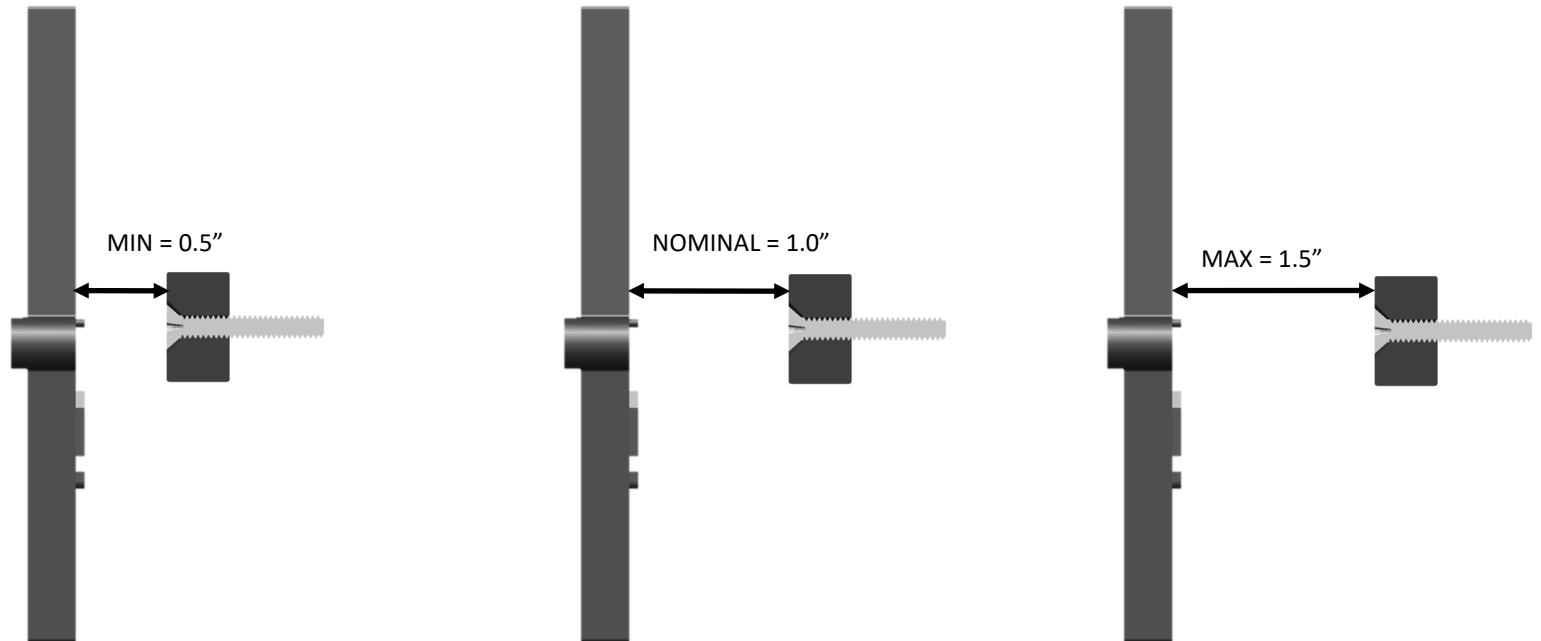


*kelderman*



## ECU/MAGNET MOUNTING

- Magnet should be positioned between 0.5 inches and 1.5 inches from the ECU with 1.0 inches being ideal.
- The countersunk side of the magnet should always face the magnet or the ECU wont see the magnet

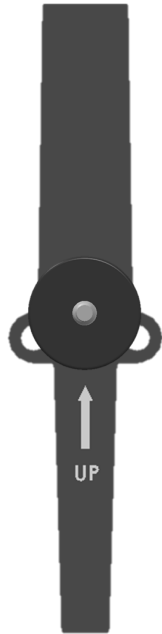
*kelderman*

DETAILS

Ride Height

*Magnet at centerline*

No action needed magnet is at centerline



Below Height

*Magnet above centerline*

After 10 seconds compressor will turn on to fill bags until magnet reaches centerline.



Over Height

*Magnet below centerline*

After 10 seconds valve will open to remove air from bags until magnet reaches centerline.



*kelderman*



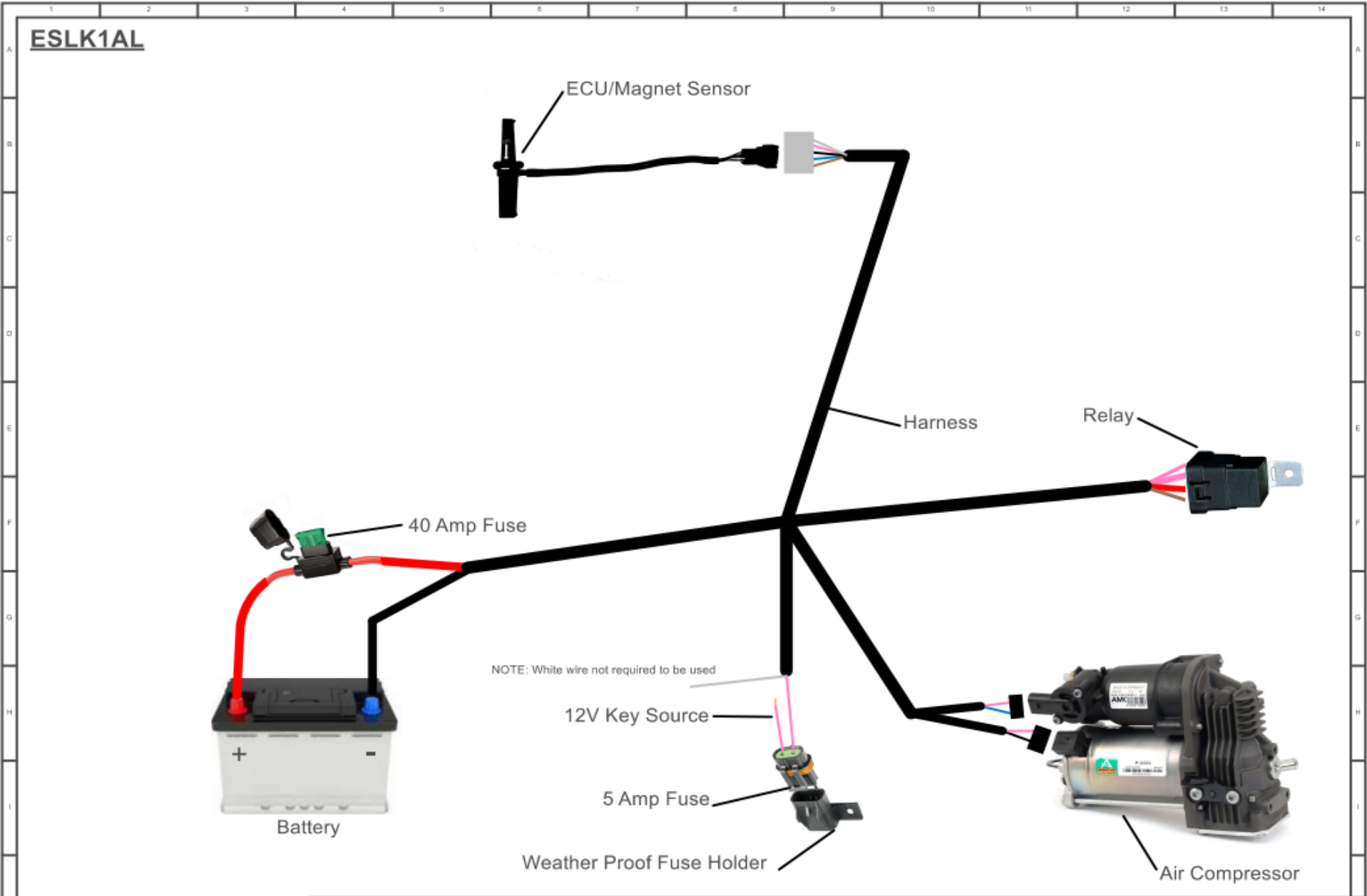
## TROUBLESHOOTING

**If system fails to function as described in the details page, follow these troubleshooting steps:**

Note: This is not an exhaustive list of diagnostic tests

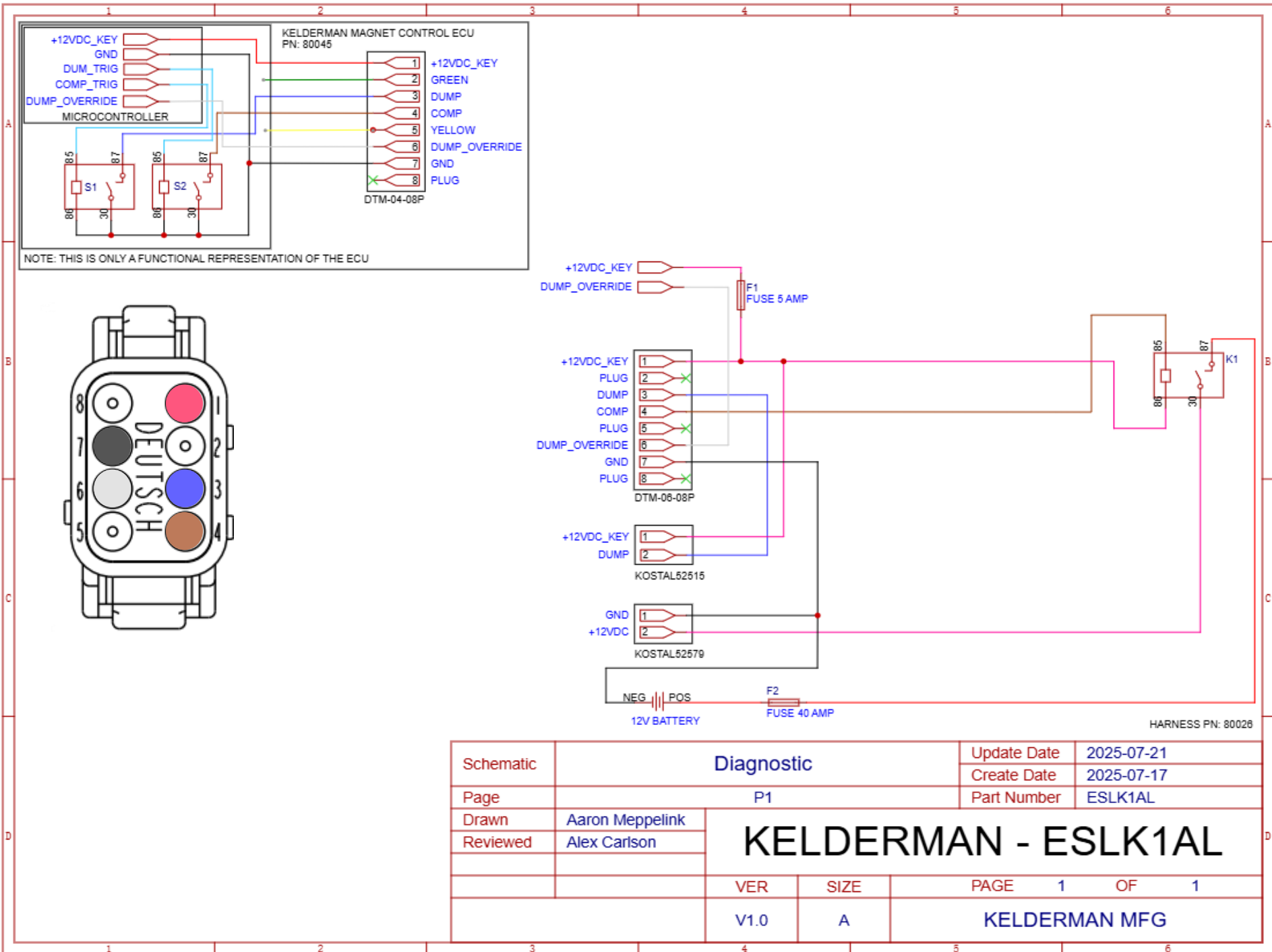
- Verify 5 and 40 amp fuses are not blown
  - Replace if blown.
  - If the 5 amp fuse blows again there is likely a short in the harness, if the 40 amp fuse blows the compressor is likely faulty or there is a short in the harness.
- Verify dump override wire (White) is not shorted to ground. (if equipped)
  - Find switch or short and correct.
- Verify magnet is facing the correct direction and is clean of magnetic debris.
  - Correct magnet direction.
  - Clean debris off of magnet.
- Verify ground is present at the harness side of the 8 pin connector by continuity check to a known ground.
  - If battery ground connection is good, the harness is faulty.
- Verify key power is present at the controller by measuring voltage between pins 7 and 1.
  - If key power source is good and fuse is good, and there is still no key power at pin 1 harness is likely faulty.
- Test the compressor/relay by jumping pins 7 and 4.
  - If compressor doesn't turn on, measure voltage at the compressor plug while pin are jumped It should match battery voltage. If there is voltage at this plug, compressor is likely faulty. If no voltage at plug the relay is likely faulty.
- Test dump valve by jumping pins 7 and 3.
  - If dump valve doesn't open, measure voltage at the dump valve plug while pin are jumped It should match key power voltage. If there is voltage at this plug, dump valve is likely faulty. If no voltage at plug the harness is likely faulty.
- If compressor and dump valve function while jumping, and key power is present at pin 1 of the 8 pin connector the ECU is likely faulty.

The Kelderman logo features the brand name in a white, italicized, sans-serif font on a red, trapezoidal background. To the right of the text is a circular emblem with a white border, containing a stylized red 'K' and 'L' intertwined.



NOTE: White wire not required to be used

					Prj:	ESLK1AL	Sheet nb.	1 of 1	Kelderman Manufacturing 2686 Hwy 92 Oskaloosa Iowa
					Prj nb:		Desg. by:		
A				Open	Title:	ESLK1AL			
Rev.	Date	Description	Appd. by	Status					



Schematic	Diagnostic	Update Date	2025-07-21
		Create Date	2025-07-17
Page	P1	Part Number	ESLK1AL
Drawn	Aaron Meppelink	<b>KELDERMAN - ESLK1AL</b>	
Reviewed	Alex Carlson		
		VER	SIZE
		V1.0	A
		PAGE	1 OF 1
		KELDERMAN MFG	

NOTES

*kelderman*



**CONTACT INFORMATION****SCAN ME****SCAN QR CODE  
FOR KELDERMAN  
WARRANTY PAGE**

KELDERMAN MANUFACTURING APPRECIATES YOUR BUSINESS. WE STRIVE TO MEET THE NEEDS OF OUR CUSTOMERS BY PROVIDING THE HIGHEST QUALITY PRODUCTS. IF YOU HAVE ANY QUESTIONS CONCERNING OUR PRODUCTS PLEASE CALL OR EMAIL US AT THE FOLLOWING:

**2686 HIGHWAY 92  
OSKALOOSA, IOWA 52577**

**PHONE: 1-800-334-6150  
EMAIL: INFO@KELDERMAN.COM**

**SEE YOUTUBE PAGE FOR ADDITIONAL VIDEOS:**

**HTTPS://WWW.YOUTUBE.COM/USER/KELDERMANTRUCKS**

***kelderman***