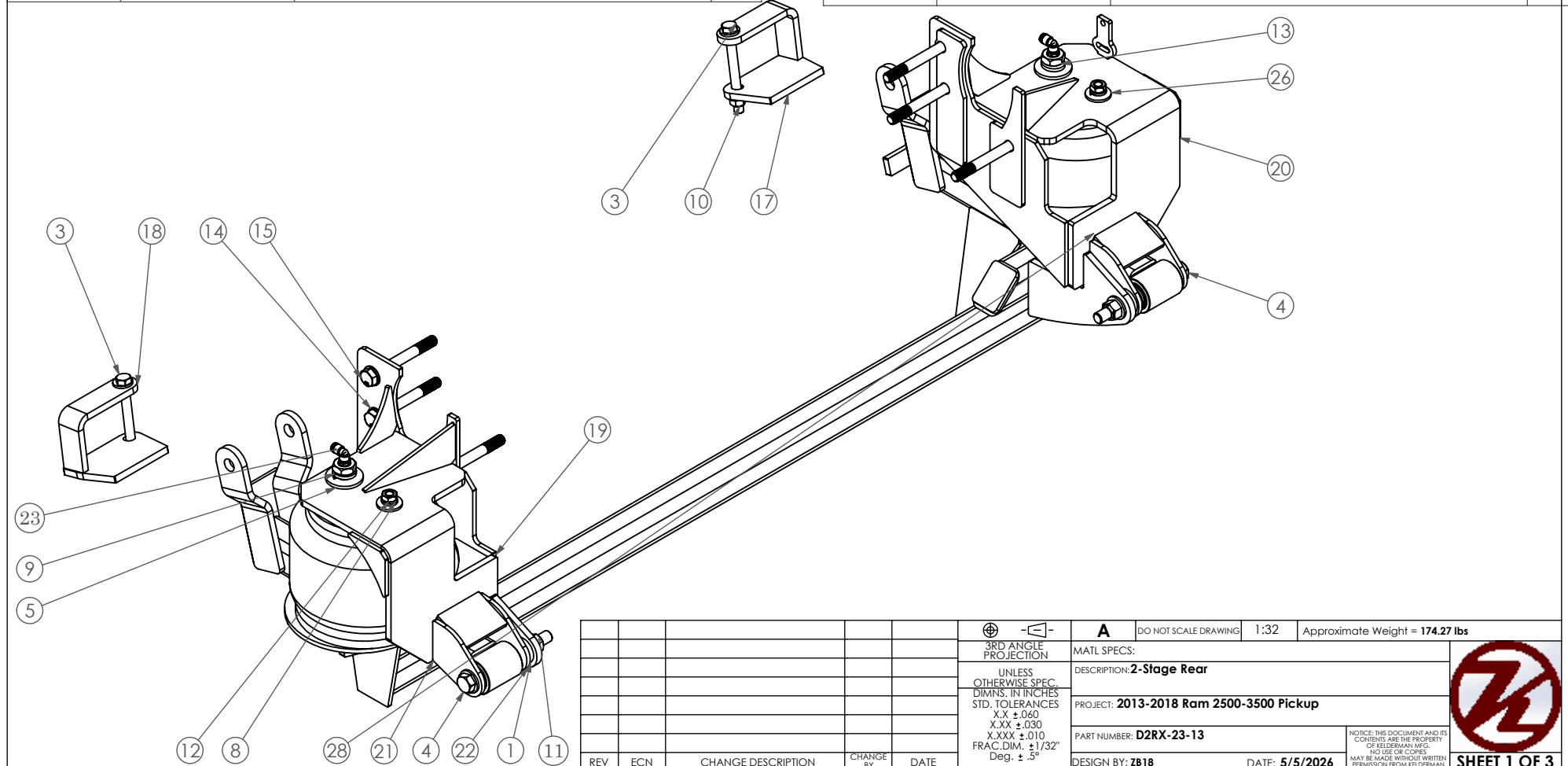


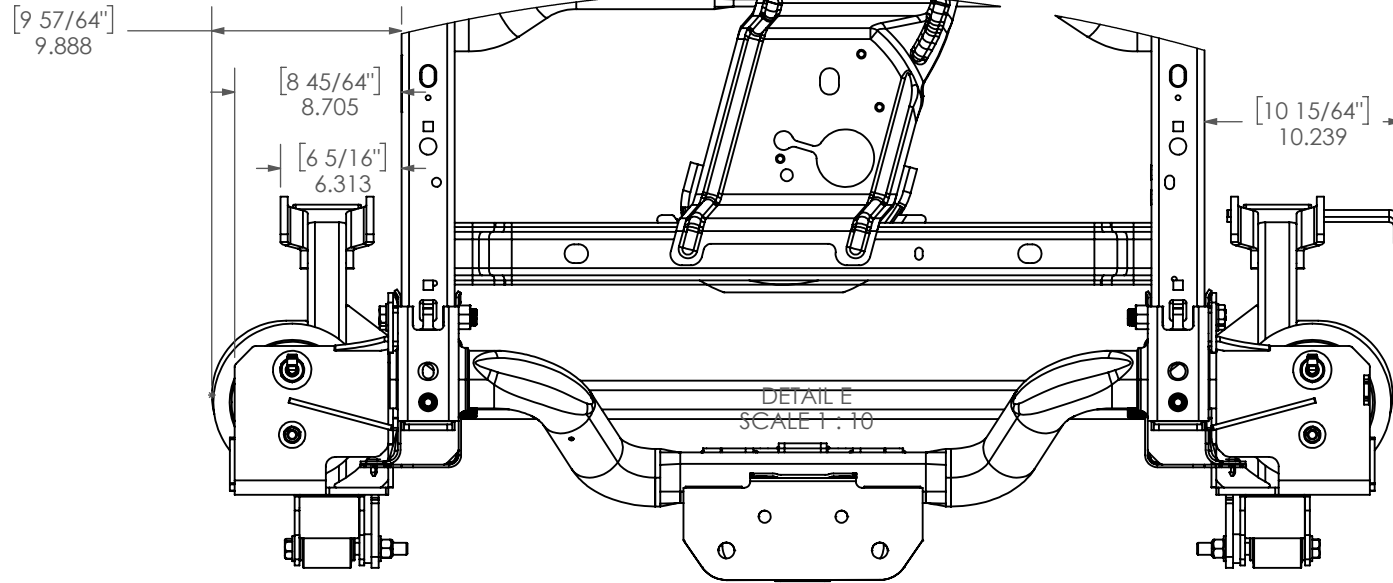
ITEM NO.	PART NUMBER	DESCRIPTION	QTY.
1	10784	Plate - 3/8" - 1.50" OD x .656" ID - Spacer	2
2	12026	Hex Bolt - 1/2"-13 x 3-3/4" - GR5 - Z	2
3	12037	Hex Bolt - 1/2"-20 x 5" - GR8 - YZ	2
4	12443	Hex Bolt - 5/8"-18 x 6" - GR8 - YZ	2
5	13008	Flat Washer USS - 3/4 - GR8 - YZ	2
6	13024	Flat Washer SAE - 1/2" - GR8 - YZ	4
7	13026	Flat Washer SAE - 5/8" - GR8 - YZ	4
8	13050	Split Lock Washer - 1/2" - GR8 - YZ	4
9	13056	Split Lock Washer - 3/4" - GR8 - YZ	2
10	13124	Top Distorted Thread Lock Nut - 1/2"-20 - GR8 - YZ	2
11	13126	Top Distorted Thread Lock Nut - 5/8"-18 - GR8 - YZ	2
12	13144	Hex Nut - 1/2"-13 - GR5 - Z	2
13	13208	Jam Nut RHT - 3/4"-16 - GR5 - Z	2
14	13890	Flat Washer - M14 - Class 10.9 - YZ	6

ITEM NO.	PART NUMBER	DESCRIPTION	QTY.
15	13939	Hex Bolt - M14-2mm x 120mm x 34mm - Class 8.8 - Z	6
16	13978	External Tooth Lock Washer - 1/2" - GR5 - Z	2
17	14563	(PS) Overload Bracket	1
18	14564	(DS) Overload Bracket	1
19	18205	Weldment - (DS) Top Frame Mount	1
20	18210	Weldment - (PS) Top Frame Mount	1
21	18212	Weldment - Swing Arm	1
22	18354	Limitier	2
23	80094	Fitting - Elbow - 90° - 1/4"18 MNPT x 1/4" PTC - DOT	2
24	69912	Plate - 1/2" - Riser - 7.25" OD - .660" ID	2
25	15899	Plate - 1/2" - Upper Bag Spacer	2
26	13004	Flat Washer USS - 1/2" - GR5 - Z	4
27	80007	Small Bushing - RB111	2
28	80012-5323	Air Bag - Firestone 5323	2

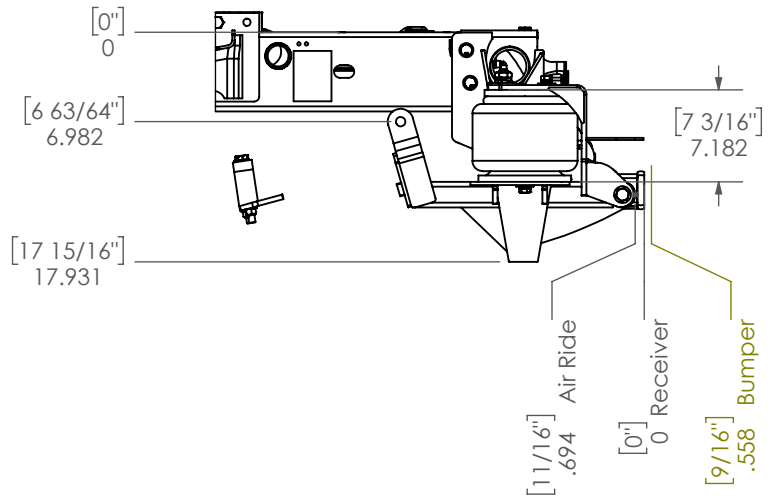


3RD ANGLE PROJECTION		A DO NOT SCALE DRAWING		1:32	Approximate Weight = 174.27 lbs
UNLESS OTHERWISE SPEC. DIMINS. IN INCHES STD. TOLERANCES X.XX ±.060 X.XXX ±.010 FRAC.DIM. ±1/32" Deg. ±.5°		MATERIAL SPECIFICATIONS:			
REV		ECN		CHANGE DESCRIPTION	
CHANGE BY		DATE			
PROJECT: 2013-2018 Ram 2500-3500 Pickup		PART NUMBER: D2RX-23-13		DESIGN BY: ZB18	
DATE: 5/5/2026		NOTICE: THIS DOCUMENT AND ITS CONTENTS ARE THE PROPERTY OF KELDERSMAN MFG. NO USE OR COPIES MAY BE MADE WITHOUT WRITTEN PERMISSION FROM KELDERSMAN		SHEET 1 OF 3	

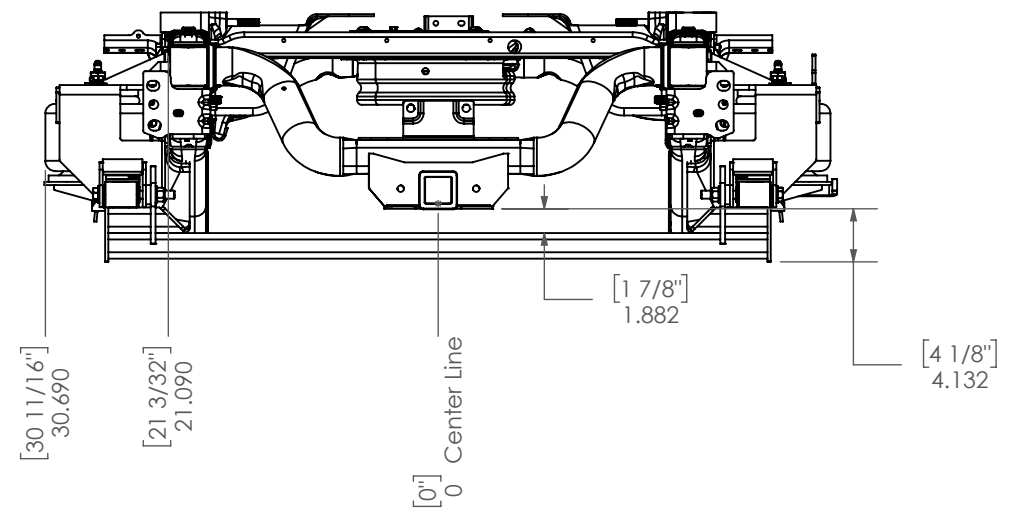




DETAIL E
SCALE 1:10



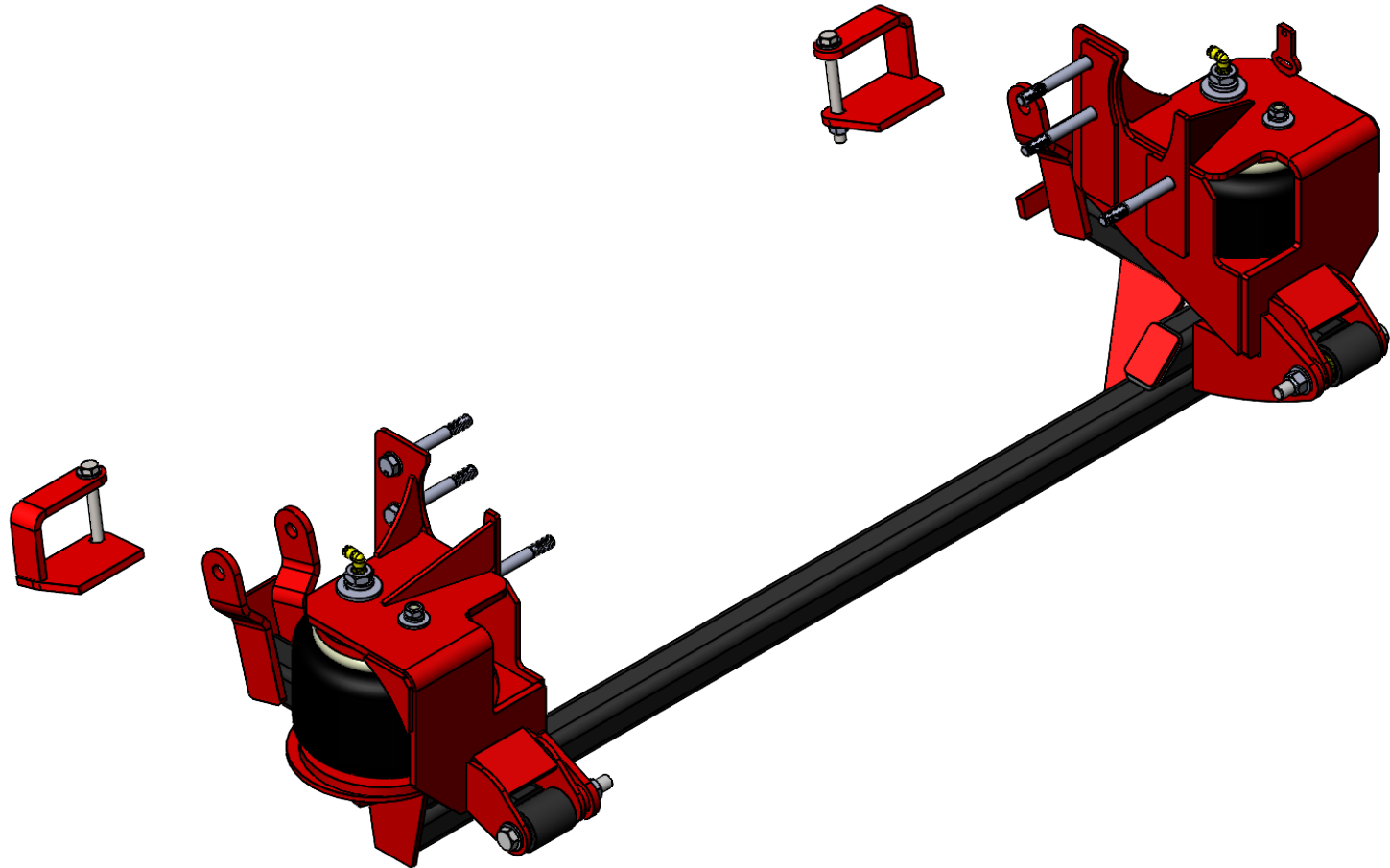
[11/16"]
.694 Air Ride
[0"]
0 Receiver
[9/16"]
.558 Bumper



[30 11/16"]
30.690
[21 3/32"]
21.090
[0"]
Center Line
[1 7/8"]
1.882
[4 1/8"]
4.132

					 3RD ANGLE PROJECTION	A DO NOT SCALE DRAWING 1:48 Approximate Weight = lbs
					UNLESS OTHERWISE SPEC. DIMENS. IN INCHES STD. TOLERANCES X.X ± .060 X.XX ± .030 X.XXX ± .010 FRAC.DIM. ± 1/32" Deg. ± .5°	MATL SPECS: DESCRIPTION: 2-Stage Rear
					PROJECT: 2013-2018 Ram 2500-3500 Pickup	NOTICE: THIS DOCUMENT AND ITS CONTENTS ARE THE PROPERTY OF KELDERSMAN MFG. NO USE OR COPIES MAY BE MADE WITHOUT WRITTEN PERMISSION FROM KELDERSMAN
					PART NUMBER: D2RX-23-13	
REV	ECN	CHANGE DESCRIPTION	CHANGE BY	DATE	DESIGN BY: Zach Beltz	DATE: 5/5/2026





						A DO NOT SCALE DRAWING 1:32 Approximate Weight = 174.27 lbs
					3RD ANGLE PROJECTION UNLESS OTHERWISE SPEC. DIMS. IN INCHES STD. TOLERANCES X.X ± .060 X.XX ± .030 X.XXX ± .010 FRAC. DIM. ± 1/32" Deg. ± .5°	MATL SPECS: DESCRIPTION: 2-Stage Rear PROJECT: 2013-2018 Ram 2500-3500 Pickup PART NUMBER: D2RX-23-13 DESIGN BY Zach Beltz
REV	ECN	CHANGE DESCRIPTION	CHANGE BY	DATE		NOTICE: THIS DOCUMENT AND ITS CONTENTS ARE THE PROPERTY OF KELDERMAN MFG. NO USE OR COPIES MAY BE MADE WITHOUT WRITTEN PERMISSION FROM KELDERMAN.
						SHEET 3 OF 3