

Version 1.2

KLM50800



**2686 Highway 92 - Oskaloosa, IA 52577**  
**phone: 641.673.0468 - fax: 641.673.4168**  
**[www.kelderman.com](http://www.kelderman.com)**

# **2009-2021 Dodge 1500 Rear Coil Replacement Install Instructions**



1. Place the truck on a level concrete surface. Measure the height of the rear of the truck from the bottom of the hitch to the ground. Record the measurement here \_\_\_\_\_. This measurement will be used to set the ride height once the install is complete.

2. Place a floor jack under the rear axle. Raise the truck up so that the rear wheels can be removed. Place a jack stand under the frame on each side just in front of the four link mounts. Remove the rear wheels and remove the plastic splash shield.



3. Remove the lower shock bolt and disconnect the shock. Lower the axle down until the brake lines are tight. The coils should be loose enough to pull out by hand. Next remove the rubber bump stops. Also remove the plastic mounting tab that holds the wiring for the wheel sensor from the axle.

4. Locate the upper bag mount (Part # 50117) It installs in the upper spring coil bucket. It mounts with the tabs on the outside. Locate the 4-1/2" disk (Part #50788) with the 1/2" hole in it. Place it on top of the spring bucket. Use the 1/2" lock washer and nut to fasten in place. Torque to 65 ft/lbs.







5. Locate the lower air bag mounts (Part #50801-DS and 50802-PS) and 5323 Air Bag (Part #80012-5323). Locate the 1/2" x 4" bolt, lock washer and nut. Snug the air bag to the mounting bracket. Make sure to look at the orientation of the upper bag mounting holes. Make sure to rotate the air bags so that the studs on top of the bag line up with the holes on the upper bag mount. Now you can torque the 1/2" bolt to 30 ft/lbs



6. Set the Lower Air Bag Mounts on top of the axle They fasten to the axle with the 3/8" x 1-1/2", bolts (and Spacer Part# 50789), 3/8" x 1" bolt and 1/2" x 1-1/2" bolts. The 3/8" x 1" and 1/2" x 1-1/2" use the tab nuts, being that there is no way to get a wrench on the nuts.

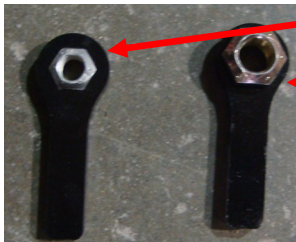
Use the upper hole to relocate the plastic sensor



Spacer 3/8" x 1-1/2"



3/8" x 1" bolt  
uses tab nut  
on back side



1/2" x 1-1/2"  
bolt uses tab  
nut on bottom

7. Torque the 3/8" bolts to 40 ft/lbs and the 1/2" nuts to 65 ft/lbs.

8. Install the plastic tab on the sensor wiring harness to the top hole in the lower air bag mounting bracket.

9. Fasten the top of the air bag to the upper bag mount with the 1/2" and 3/4" lock washer and nuts. Insert the 90° fitting in the top of the bag and tighten.



The following instructions are only used if the Kelderman automatic leveling kit is purchased.

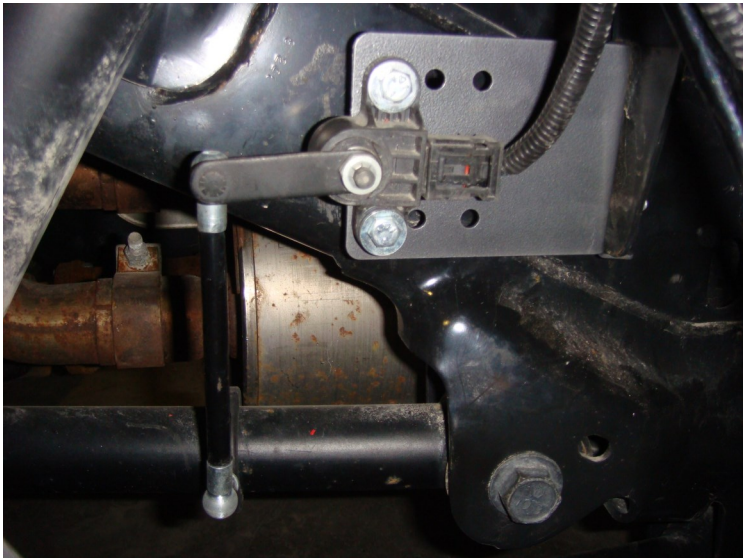
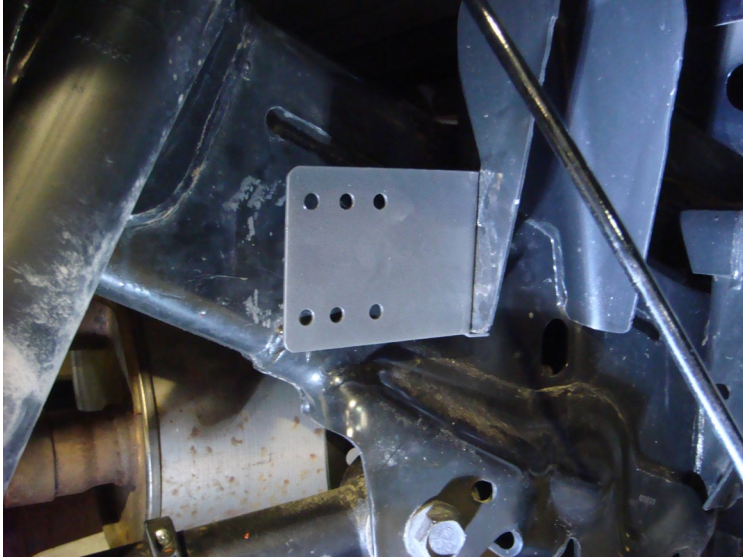
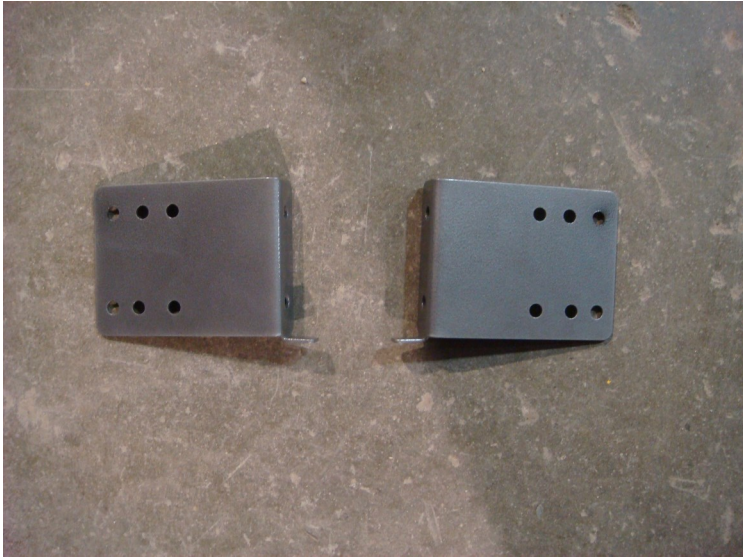
1. Locate the sensor mounts. There is a right and left side. Hold the sensor mount up to the forward box mount. Hold the mount up so that it is flush with the bottom of the mount. Use a paint marker and mark the holes on the box mount. Use 5/16" drill bit to drill the holes. Fasten the sensor mounts to the box mount with the 1/4" x 1" bolts, lock washers and nuts.
2. Locate the sensors. They fasten to the sensor mounts with the 1/4" x 1" bolts. Use the rear set of holes. Locate the sensor link mounting collar. It goes about 4" from the end of the upper trailing arm where the bushing is welded to the trailing arm. Locate the linkage arm and connect the sensor to the collar.
3. Locate the air tank. There are (2) styles of air tanks. The one gallon tank mounts on the inside of the drivers side frame rail. The three gallon tank mounts up behind the front bumper. Use the supplied hardware to mount the air tank
4. Locate the compressor box. The box mounts in the inside of the drivers side frame rail. Use the clamp brackets and supplied 3/8" bolts to attach the compressor box.

### **Wiring Instructions for Compressor Box**

12 gauge red wire	battery positive
16 gauge red wire	battery positive
12 gauge black wire	battery ground
16 gauge orange	acc (switched key)

- ♦ Sensor wires go sensor one drivers side and sensor two passenger side
- ♦ Calibration
- ♦ The air bag should run around 7-1/2" to 8" for the smoothest ride.











# Electronic Plumbing & Wiring Diagram with Air Dryer

