

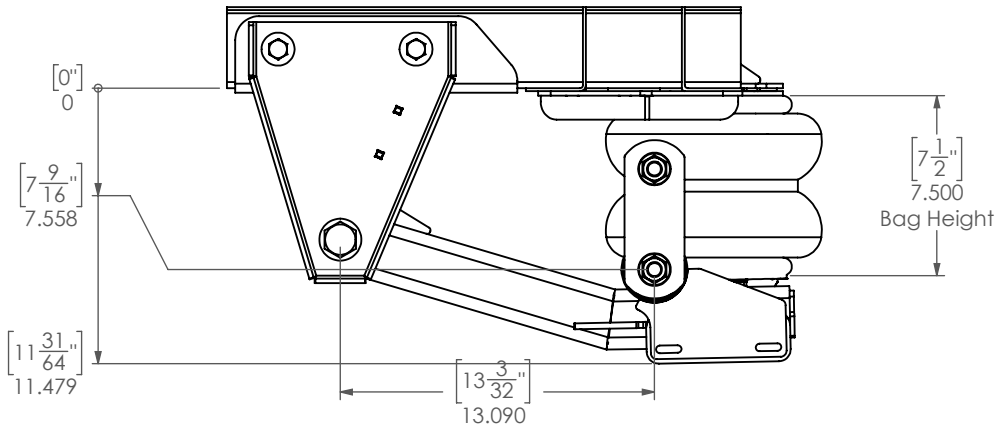
ITEM NO.	PART NUMBER	DESCRIPTION	QTY.
<i>Assemblies</i>			
1	10012182	Assembly - 2" Lift Swing Arm	1
<i>Weldments</i>			
2	20802	Weldment - Top Frame Swing Arm Mount (PS)	1
3	20803	Weldment - Top Frame Swing Arm Mount (DS)	1
4	10012902	Weldment - Shackle Link - 4.19"	4
5	10013015	Weldment - 1-5/8" Bag Riser (5323)	2
6	10013120	Weldment - Top Frame, Upper - 5323 Bag	1
7	10013122	Weldment - Top Frame, Lower - 5323	1
<i>Parts</i>			
8	20812	Bushing - L 3-1/8" ID 17/32 OD 3/4"	4
9	10012820	Plate - 7ga - Magnet Sensor Bracket	1
10	10013114	Plate - 11ga - Haldex Sensor Adaptor Plate - Frame Side - w/Bends	1
11	10013116	Plate - 11ga - Haldex Sensor Adaptor Plate - Swing Arm Side - w/Bend	1
<i>Purchased Parts</i>			
12	80012-5323	Air Bag - Firestone 5323	2
13	80094	90° Male Elbow Tube 1/4" x 1/4-18 NPT	2
<i>Hardware</i>			
14	12007	Hex Bolt - 1/2"-20 x 1-1/2" - GR8 - YZ	2
15	12024	Hex Bolt - 1/2"-13 x 3-1/2" - GR5 - Z	2
16	12037	Hex Bolt - 1/2"-20 x 5" - GR8 - YZ	8
17	12110	Hex Bolt - 1/4"-20 x 1" - GR5 - Z	2
18	12631	Hex Bolt - 7/8"-14 x 5-1/4" - GR8 - YZ	2
19	13000	Flat Washer USS - 1/4" - GR8 - YZ	4
20	13008	Flat Washer USS - 3/4" - GR8 - YZ	2
21	13030	Flat Washer SAE - 7/8" - GR8 - YZ	4
22	13056	Split Lock Washer - 3/4" - GR8 - YZ	2
23	13100	Top Distorted Thread Lock Nut - 1/4"-20 - GR5 - Z	2
24	13101	Top Distorted Thread Lock Nut - 5/16"-18 - GR5 - Z	2
25	13104	Top Distorted Thread Lock Nut - 1/2"-13 - GR5 - Z	10
26	13130	Top Distorted Thread Lock Nut - 7/8"-14 - GR8 - YZ	2
27	13144	Hex Nut - 1/2"-13 - GR5 - Z	2
28	13208	Jam Nut RHT - 3/4"-16 - GR5 - Z	2
29	14062	Flat Washer SAE - #10 - 18-8 SS - Plain	4
30	14096	Machine Screw - #10-24 x 3/4" - 18-8 SS - Plain	2
31	14097	Hex Nut - #10-24 - GR5 - Z	2
32	10013429	Kit - U-Bolts - CE8 1.4" Riser Block Elimination	1
33	13004	Flat Washer USS - 1/2" - GR5 - Z	24
34	13050	Split Lock Washer - 1/2" - GR5 - Z	4

B	Shackle +3/4"	TA	6/29/22		A DO NOT SCALE DRAWING 1:16 Approximate Weight = 159.25 lbs
C	Change to 5323 Bag	TA	9/14/22		
				UNLESS OTHERWISE SPEC. DIMS. IN INCHES STD. TOLERANCES .XX ±.060 .XXX ±.030 X.XXX ±.010 FRAC.DIM. ±1/32" Deg. ±.5°	MATL SPECS: DESCRIPTION: Kit - 2" Lift - 2-Stage Rear - 2WD PROJECT: 2014+ Mercedes-Benz Sprinter Van - 3500 - DRW - 170" WB PART NUMBER: 10012180 DESIGN BY: Troy Anderson DATE: 11/25/2024
REV	ECN	CHANGE DESCRIPTION	CHANGE BY		

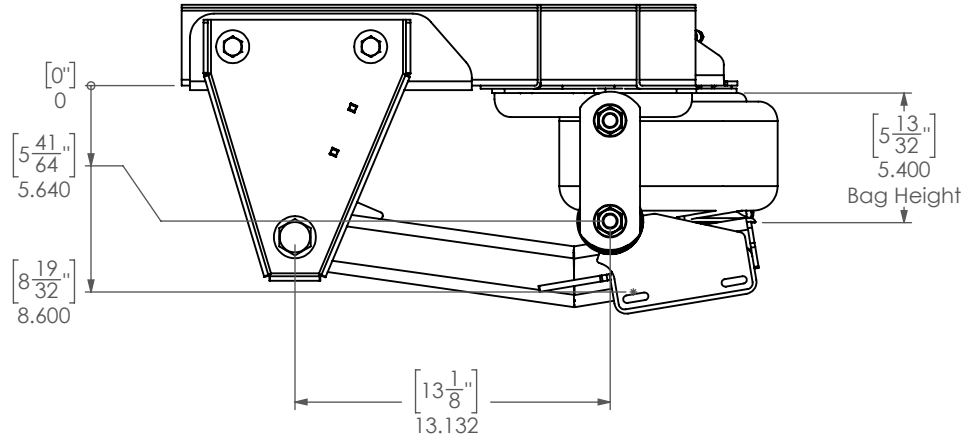


NOTICE: THIS DOCUMENT AND ITS CONTENTS ARE THE PROPERTY OF FELDERMAN MFG. NO USE OR COPIES MAY BE MADE WITHOUT WRITTEN PERMISSION FROM FELDERMAN.

Ride Height

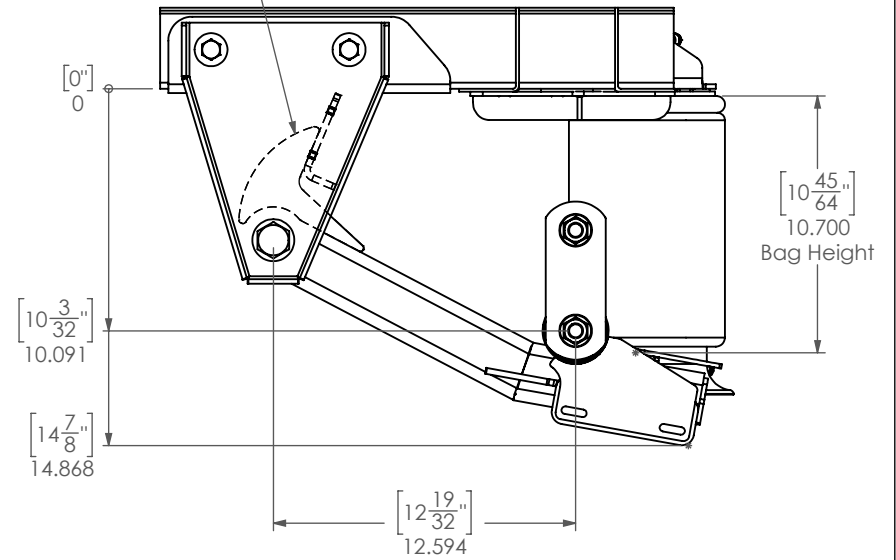


Air Dumped

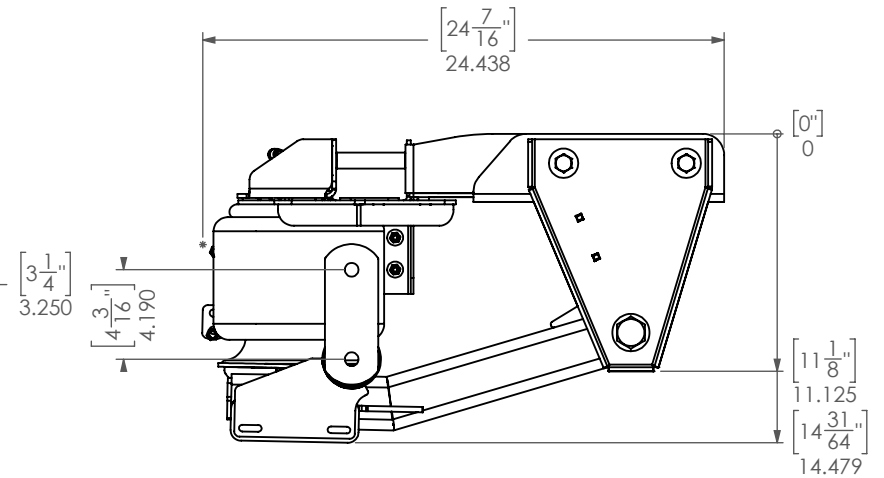
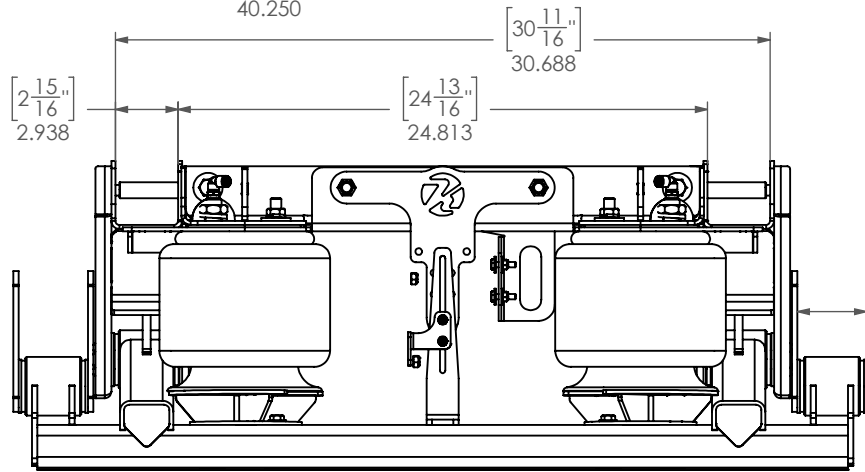
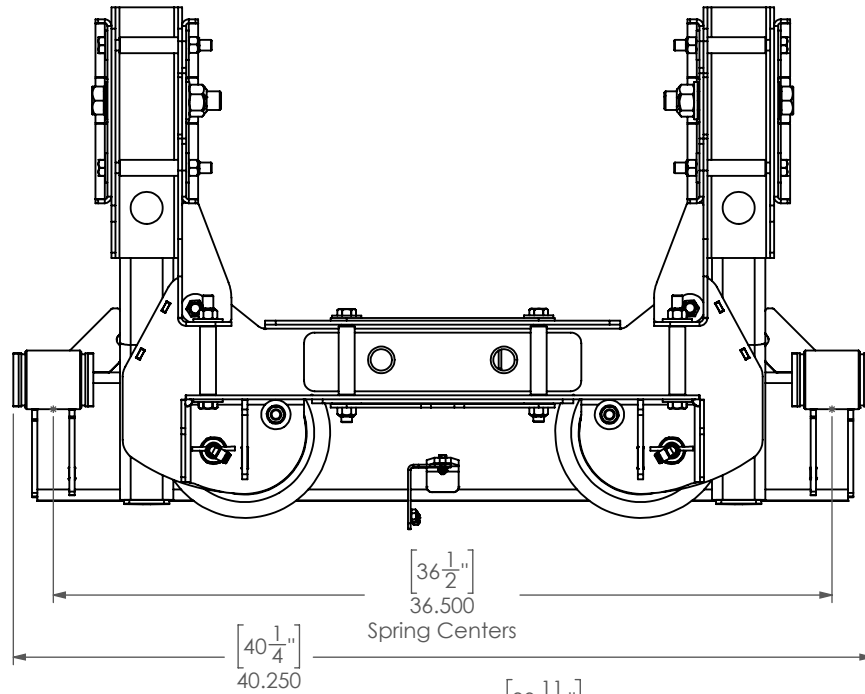


Travel Limiter

Full Droop



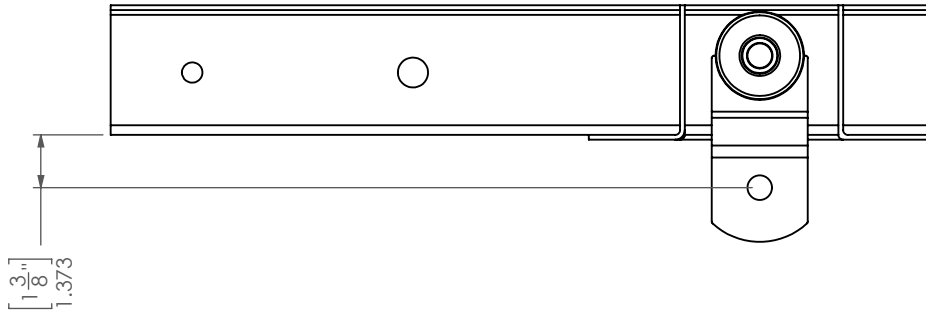
B		Shackle +3/4"	TA	6/29/22		A	DO NOT SCALE DRAWING	1:16	Approximate Weight = 159.25 lbs
C		Change to 5323 Bag	TA	9/14/22		MATL SPECS:			
					UNLESS OTHERWISE SPEC. DIMS. IN INCHES	DESCRIPTION: Kit - 2" Lift - 2-Stage Rear - 2WD			
					STD. TOLERANCES X.X ±.060 X.XX ±.030 X.XXX ±.010 FRAC.DIM. ±1/32" Deg. ±.5°	PROJECT: 2014+ Mercedes-Benz Sprinter Van - 3500 - DRW - 170" WB			
REV	ECN	CHANGE DESCRIPTION	CHANGE BY	DATE		PART NUMBER: 10012180		NOTICE: THIS DOCUMENT AND ITS CONTENTS ARE THE PROPERTY OF KELDERSMAN MFG. NO USE OR COPIES MAY BE MADE WITHOUT WRITTEN PERMISSION FROM KELDERSMAN	
						DESIGN BY: Troy Anderson	DATE: 11/25/2024		SHEET 2 OF 4



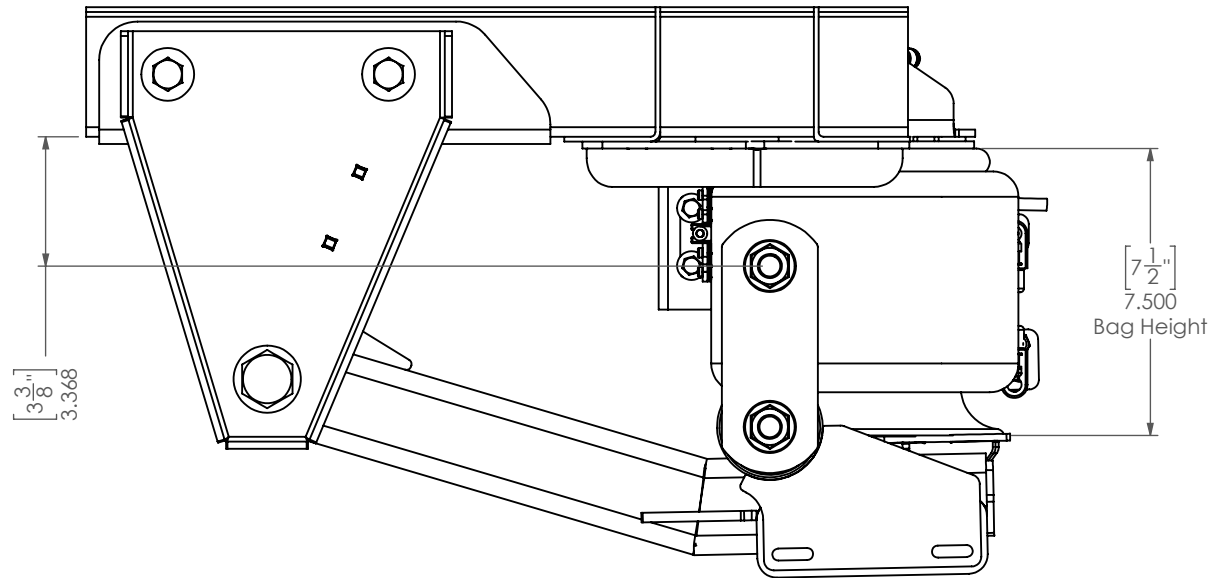
B		Shackle +3/4"	TA	6/29/22		A	DO NOT SCALE DRAWING	1:20	Approximate Weight = 159.25 lbs
C		Change to 5323 Bag	TA	9/14/22		MATERIAL SPECIFICATIONS:			
						DESCRIPTION: Kit - 2" Lift - 2-Stage Rear - 2WD			
						PROJECT: 2014+ Mercedes-Benz Sprinter Van - 3500 - DRW - 170" WB			
						PART NUMBER: 10012180			
REV	ECN	CHANGE DESCRIPTION	CHANGE BY	DATE		DESIGN BY: Troy Anderson	DATE: 11/25/2024		

NOTICE: THIS DOCUMENT AND ITS CONTENTS ARE THE PROPERTY OF KELDERSMAN MFG. NO USE OR COPIES MAY BE MADE WITHOUT WRITTEN PERMISSION FROM KELDERSMAN.





2WD Ride Height
2" Lift at Shackle
1" Lift at Axle



					⊕	3RD ANGLE PROJECTION	A	DO NOT SCALE DRAWING	1:16	Approximate Weight = 159.25 lbs
					UNLESS OTHERWISE SPEC. DIMS. IN INCHES		MATERIAL SPECIFICATIONS:			
					STD. TOLERANCES X.X ± .060 X.XX ± .030 X.XXX ± .010 FRAC.DIM. ± 1/32" Deg. ± .5°		DESCRIPTION: Kit - 2" Lift - 2-Stage Rear - 2WD		PROJECT: 2014+ Mercedes-Benz Sprinter Van - 3500 - DRW - 170	
REV	ECN	CHANGE DESCRIPTION	CHANGE BY	DATE			PART NUMBER: 10012180		NOTICE: THIS DOCUMENT AND ITS CONTENTS ARE THE PROPERTY OF KELDERSMAN MFG. NO USE OR COPIES MAY BE MADE WITHOUT WRITTEN PERMISSION FROM KELDERSMAN	
							DESIGN BY: Troy Anderson		DATE: 11/25/2024	

