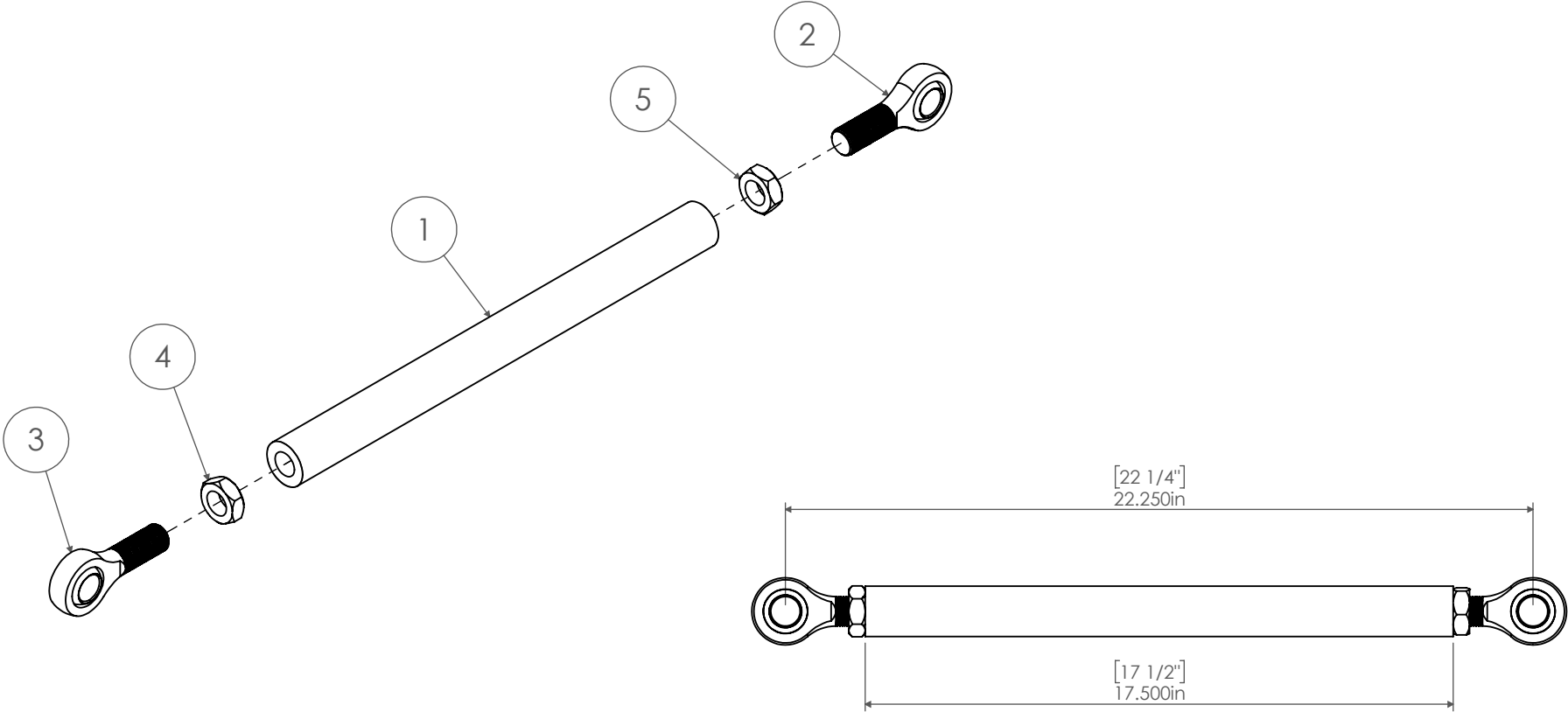




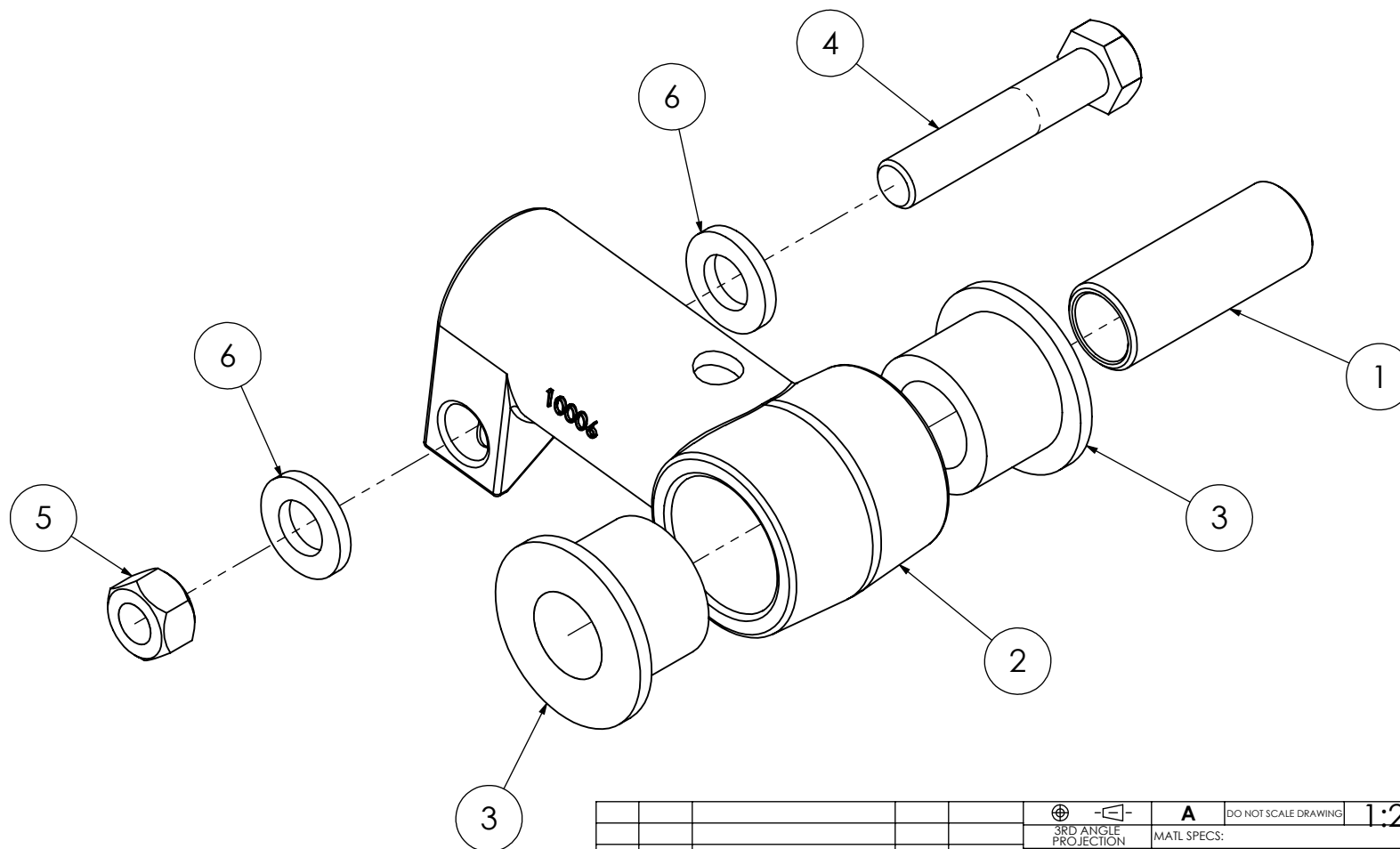
ITEM NO.	PART NUMBER	DESCRIPTION	QTY.
Parts			
1	10005578	Tube - 1.5" OD x .8125" ID x 17.5" L - Panhard Bar - 7/8"-14 Thread	1
Purcahsed Parts			
2	80051	(RH) Ball Joint Rod End 7/8" - 14 x 7/8"	1
3	80052	Purchased Parts - (LH) Ball Joint Rod End 7/8" - 14 x 7/8"	1
Hardware			
4	13210	Jam Nut - 7/8"-14 Gr. 8 YZ	1
5	13211	Jam Nut - 7/8" - 14 Gr.8 YZ	1



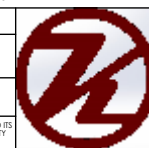
						A	DO NOT SCALE DRAWING	1:10	Approximate Weight = lbs	
					3RD ANGLE PROJECTION	MATERIAL SPECS:				
					UNLESS OTHERWISE SPEC.	DESCRIPTION: Assembly - Panhard Bar - 17.5" Bar Length - 7/8" Bolt				
					DIMNS. IN INCHES	PROJECT: 2019+ Ram 3500 - 4-Link Rear - 12 inch Lift				
					STD. TOLERANCES	PART NUMBER: 10006619				
					X.X ± .060	NOTICE: THIS DOCUMENT AND ITS CONTENTS ARE THE PROPERTY OF KELDERMAN MFG. NO USE OR COPIES MAY BE MADE WITHOUT WRITTEN PERMISSION FROM KELDERMAN				
					X.XX ± .030					
					X.XXX ± .010					
					FRACTIONAL DIM. ± 1/32"					
					Deg. ± .5°					
REV	ECN	CHANGE DESCRIPTION	CHANGE BY	DATE	DESIGN BY: Troy Anderson DATE: 6/5/2020					SHEET 1 OF 1



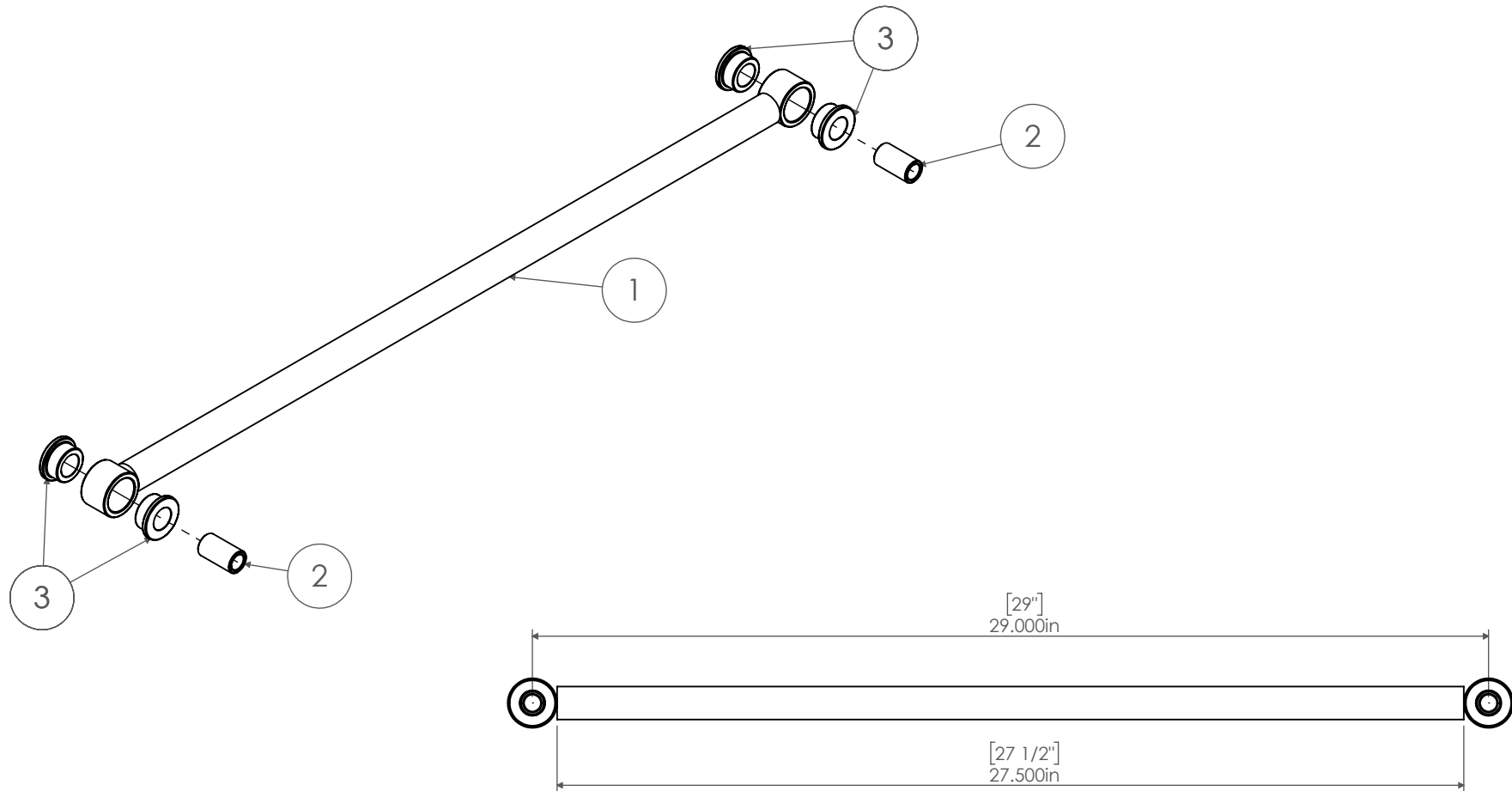
ITEM NO.	PART NUMBER	DESCRIPTION	QTY.
<i>Parts</i>			
1	20093	Bushing - OD - 1 1/8" ID - .88" Length - 3"	1
<i>Purchased Parts</i>			
2	10006	TORQUE ARM END (LHT)	1
3	80136	Purchased Parts - Bushing - OD 1.79" ID - 1 1/8" Length - 1 7/16"	2
<i>Hardware</i>			
4	12420	Bolt - 5/8"-11 X 3 1/4" GR8	1
5	13106	Lock Nut - 5/8"-18	1
6	13026	Washer - 5/8" Flat SAE Washer	2





--	--	--	--	--	--	--	--	--	--	--	--	--	--	--	--	--	--	--	--	--	--	--	--	--	--	--	--	--	--	--	--	--	--	--	--	--	--	--	--	--	--	--	--	--	--	--	--	--	--	--	--	--	--	--	--	--	--	--	--	--	--	--	--	--	--	--	--	--	--	--	--	--	--	--	--	--	--	--	--	--	--	--	--	--	--	--	--	--	--	--	--	--	--	--	--	--	--	--	--	--	--	--	--	--	--	--	--	--	--	--	--	--	--	--	--	--	--	--	--	--	--	--	--	--	--	--	--	--	--	--	--	--	--	--	--	--	--	--	--	--	--	--	--	--	--	--	--	--	--	--	--	--	--	--	--	--	--	--	--	--	--	--	--	--	--	--	--	--	--	--	--	--	--	--	--	--	--	--	--	--	--	--	--	--	--	--	--	--	--	--	--	--	--	--	--	--	--	--	--	--	--	--	--	--	--	--	--	--	--	--	--	--	--	--	--	--	--	--	--	--	--	--	--	--	--	--	--	--	--	--	--	--	--	--	--	--	--	--	--	--	--	--	--	--	--	--	--	--	--	--	--	--	--	--	--	--	--	--	--	--	--	--	--	--	--	--	--	--	--	--	--	--	--	--	--	--	--	--	--	--	--	--	--	--	--	--	--	--	--	--	--	--	--	--	--	--	--	--	--	--	--	--	--	--	--	--	--	--	--	--	--	--	--	--	--	--	--	--	--	--	--	--	--	--	--	--	--	--	--	--	--	--	--	--	--	--	--	--	--	--	--	--	--	--	--	--	--	--	--	--	--	--	--	--	--	--	--	--	--	--	--	--	--	--	--	--	--	--	--	--	--	--	--	--	--	--	--	--	--	--	--	--	--	--	--	--	--	--	--	--	--	--	--	--	--	--	--	--	--	--	--	--	--	--	--	--	--	--	--	--	--	--	--	--	--	--	--	--	--	--	--	--	--	--	--	--	--	--	--	--	--	--	--	--	--	--	--	--	--	--	--	--	--	--	--	--	--	--	--	--	--	--	--	--	--	--	--	--	--	--	--	--	--	--	--	--	--	--	--	--	--	--	--	--	--	--	--	--	--	--	--	--	--	--	--	--	--	--	--	--	--	--	--	--	--	--	--	--	--	--	--	--	--	--	--	--	--	--	--	--	--	--	--	--	--	--	--	--	--	--	--	--	--	--	--	--	--	--	--	--	--	--	--	--	--	--	--	--	--	--	--	--	--	--	--	--	--	--	--	--	--	--	--	--	--	--	--	--	--	--	--	--	--	--	--	--	--	--	--	--	--	--	--	--	--	--	--	--	--	--	--	--	--	--	--	--	--	--	--	--	--	--	--	--	--	--	--	--	--	--	--	--	--	--	--	--	--	--	--	--	--	--	--	--	--	--	--	--	--	--	--	--	--	--	--	--	--	--	--	--	--	--	--	--	--	--	--	--	--	--	--	--	--	--	--	--	--	--	--	--	--	--	--	--	--	--	--	--	--	--	--	--	--	--	--	--	--	--	--	--	--	--	--	--	--	--	--	--	--	--	--	--	--	--	--	--	--	--	--	--	--	--	--	--	--	--	--	--	--	--	--	--	--	--	--	--	--	--	--	--	--	--	--	--	--	--	--	--	--	--	--	--	--	--	--	--	--	--	--	--	--	--	--	--	--	--	--	--	--	--	--	--	--	--	--	--	--	--	--	--	--	--	--	--	--	--	--	--	--	--	--	--	--	--	--	--	--	--	--	--	--	--	--	--	--	--	--	--	--	--	--	--	--	--	--	--	--	--	--	--	--	--	--	--	--	--	--	--	--	--	--	--	--	--	--	--	--	--	--	--	--	--	--	--	--	--	--	--	--	--	--	--	--	--	--	--	--	--	--	--	--	--	--	--	--	--	--	--	--	--	--	--	--	--	--	--	--	--	--	--	--	--	--	--	--	--	--	--	--	--	--	--	--	--	--	--	--	--	--	--	--	--	--	--	--	--	--	--	--	--	--	--	--	--	--	--	--	--	--	--	--	--	--	--	--	--	--	--	--	--	--	--	--	--	--	--	--	--	--	--	--	--	--	--	--	--	--	--	--	--	--	--	--	--	--	--	--	--	--	--	--	--	--	--	--	--	--	--	--	--	--	--	--	--	--	--	--	--	--	--	--	--	--	--	--	--	--	--	--	--	--	--	--	--	--	--	--	--	--	--	--	--	--	--	--	--	--	--	--	--	--	--	--	--	--	--	--	--	--	--	--	--	--	--	--	--	--	--	--	--	--	--	--	--	--	--	--	--	--	--	--	--	--	--	--	--	--	--	--	--	--	--	--	--	--	--	--	--	--	--	--	--	--	--	--	--	--	--	--	--	--	--	--	--	--	--	--	--	--	--	--	--	--	--	--	--	--	--	--	--	--	--	--	--	--	--	--	--	--	--	--	--	--	--	--	--	--	--	--	--	--	--	--	--	--	--	--	--	--	--	--	--	--	--	--	--	--	--	--	--	--	--	--	--	--	--	--	--	--	--	--	--	--	--	--	--	--	--	--	--	--	--	--	--	--	--	--	--	--	--	--	--	--	--	--	--	--	--	--	--	--	--	--	--	--	--	--	--	--	--	--	--	--	--	--	--	--	--	--	--	--	--	--	--	--	--	--	--	--	--	--	--	--	--	--	--	--	--	--	--	--	--	--	--	--	--	--	--	--	--	--	--	--	--	--	--	--	--	--	--	--	--	--	--	--	--	--	--	--	--	--	--	--	--	--	--	--	--	--	--	--	--	--	--	--	--	--	--	--	--	--	--	--	--	--	--	--	--	--	--	--	--	--	--	--	--	--	--	--	--	--	--	--	--	--	--	--	--	--	--	--	--	--	--	--	--	--	--	--	--	--	--	--	--	--	--	--	--	--	--	--	--	--	--	--	--	--	--	--	--	--	--	--	--	--	--	--	--	--	--	--	--	--	--	--	--	--	--	--	--	--	--	--	--	--	--	--	--	--	--	--	--	--	--	--	--	--	--	--	--	--	--	--	--	--	--	--	--	--	--	--	--	--	--	--	--	--	--	--	--	--	--	--	--	--	--	--	--	--	--	--	--	--	--	--

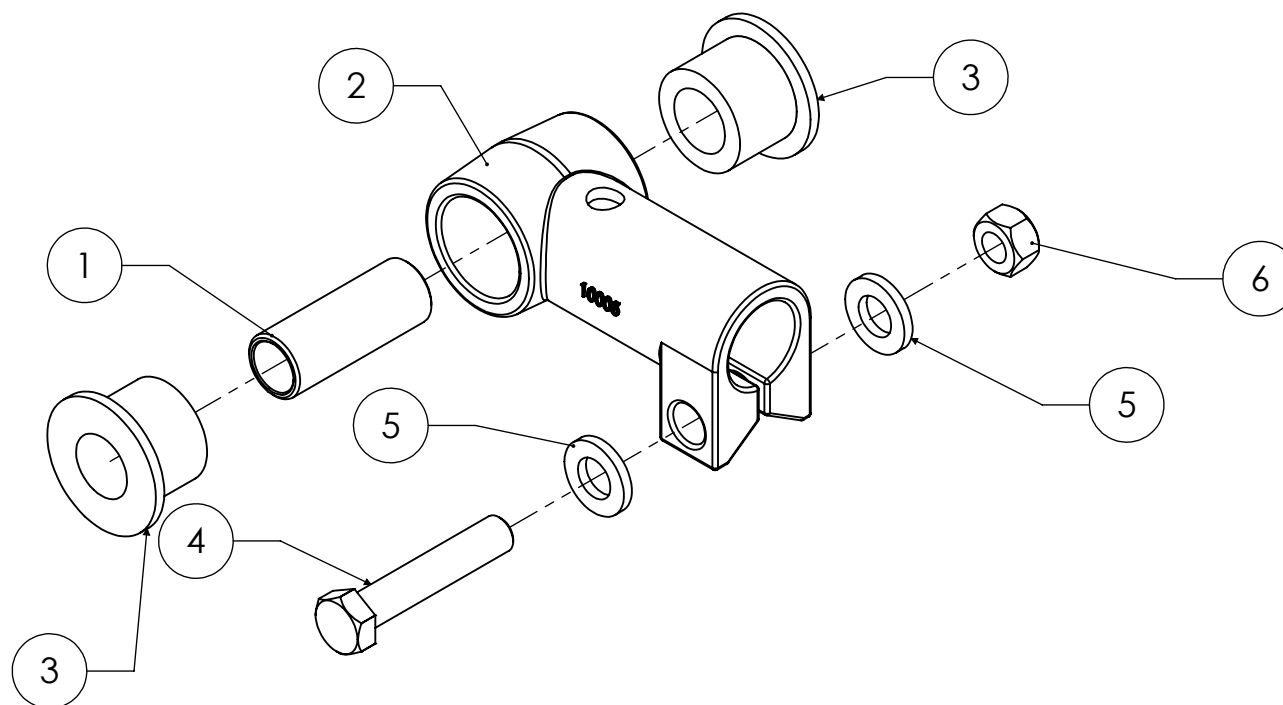




ITEM NO.	PART NUMBER	DESCRIPTION	Default/ QTY.
1	11919	Weldment - End Link - 29"	1
2	11550	CRR - Metal Reducer/Sleeve Bushing	2
3	80134	Purchased - Insert Press-In Bushing (EL)	4



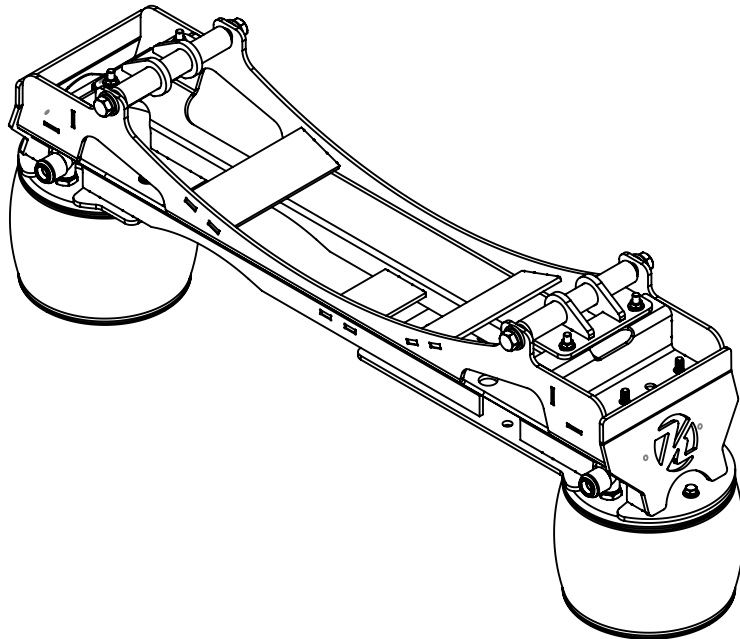
							A	DO NOT SCALE DRAWING	1:10	Approximate Weight = lbs		
						3RD ANGLE PROJECTION	MATL SPECS:					
						UNLESS OTHERWISE SPEC. DIMNS. IN INCHES STD. TOLERANCES X.X ± .060 X.XX ± .030 X.XXX ± .010 FRAC. DIM. ± 1/32" Deg. ± .5°	DESCRIPTION:					
							PROJECT:					
							PART NUMBER: 11918					
REV	ECN	CHANGE DESCRIPTION	CHANGE BY	DATE		DESIGN BY:	DATE: 6/5/2020	NOTICE: THIS DOCUMENT AND ITS CONTENTS ARE THE PROPERTY OF KELDAMAN MFG. NO USE OR COPIES MAY BE MADE WITHOUT WRITTEN PERMISSION FROM KELDAMAN				
											SHEET 1 OF 1	

ITEM NO.	PART NUMBER	DESCRIPTION	QTY.
<i>Parts</i>			
1	20093	Bushing - OD - 1 1/8" ID - .88" Length - 3"	1
<i>Purchased Parts</i>			
2	10005	TORQUE ARM END (RHT)	1
3	80136	Purchased Parts - Bushing - OD 1.79" ID - 1 1/8" Length - 1 7/16"	2
<i>Hardware</i>			
4	12420	Bolt - 5/8"-11 X 3 1/4" Gr. 5 YZ	1
5	13026	Washer - 5/8" Flat SAE Washer	2
6	13106	Lock Nut - 5/8" - 11 - Gr. 5 YZ	1





								A DO NOT SCALE DRAWING	1:2 Approximate Weight = lbs	
							3RD ANGLE PROJECTION	MATL SPECS:		
							UNLESS OTHERWISE SPEC. DIMNS. IN INCHES STD. TOLERANCES X.X ± .060 X.XX ± .030 X.XXX ± .010 FRAC.DIM. ± 1/32" Deg. ± .5°	DESCRIPTION: Assembly - Cast Knuckle 10005 - 1" ID		
								PROJECT: Dodge Trailing Arms		
								PART NUMBER: 18499	NOTICE: THIS DOCUMENT AND ITS CONTENTS ARE THE PROPERTY OF KELSEYMAN MFG. AND USE OR COPIES MAY BE MADE WITHOUT WRITTEN PERMISSION FROM KELSEYMAN	
REV	ECN	CHANGE DESCRIPTION	CHANGE BY	DATE				DESIGN BY: ZB13	DATE: 6/5/2020	

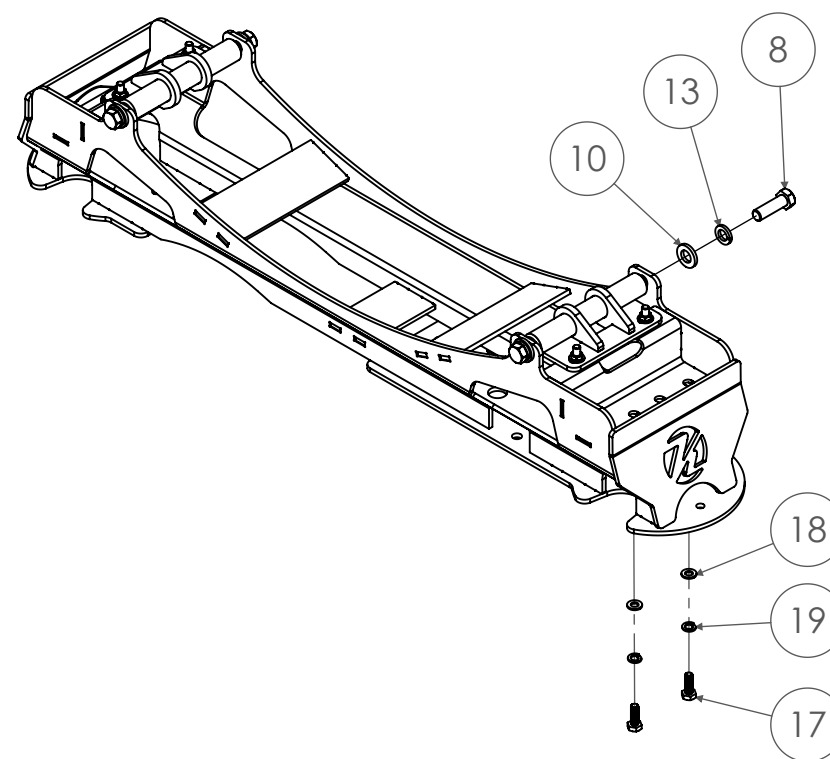
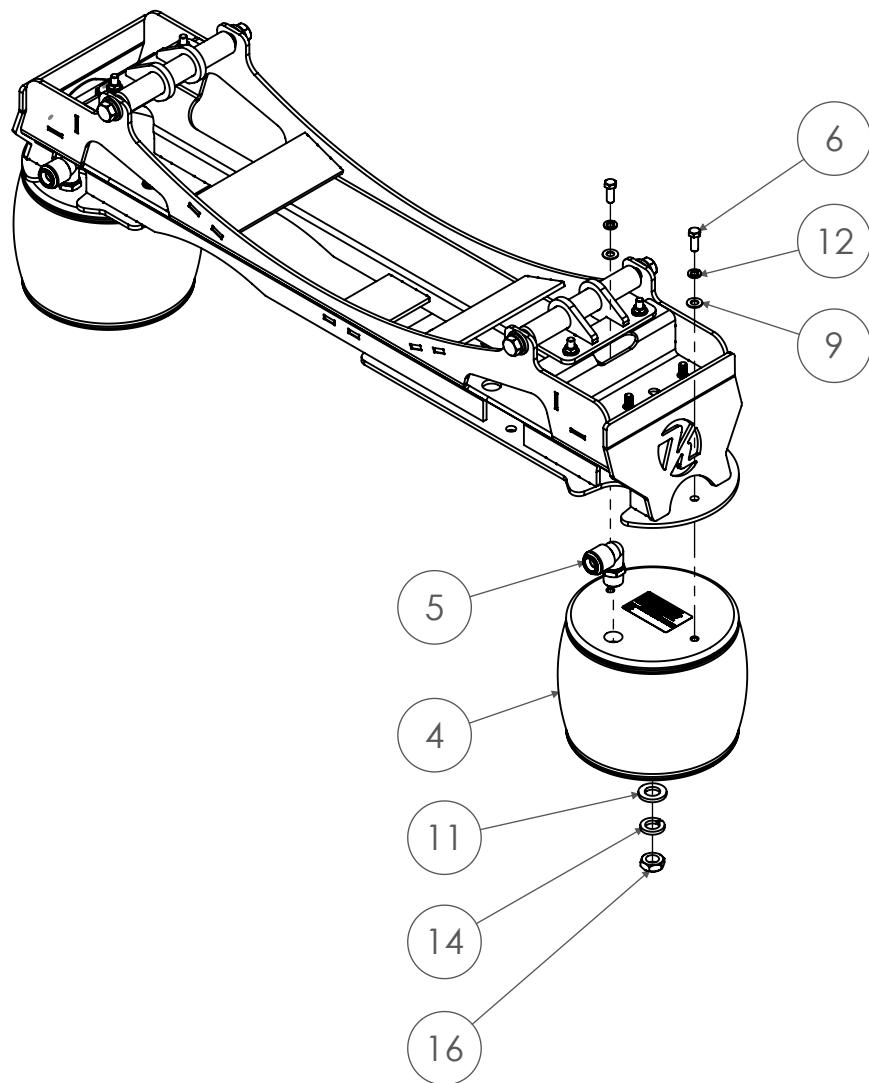
NOTICE: THIS DOCUMENT AND ITS CONTENTS ARE THE PROPERTY OF KELDERMAN MFG. NO USE OR COPIES MAY BE MADE WITHOUT WRITTEN PERMISSION FROM KELDERMAN





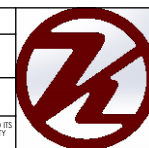
ITEM NO.	PART NUMBER	DESCRIPTION	QTY.
<i>Weldments</i>			
1	10004892	Weldment - Bag Plate Crossmember Bracket (DS)	2
2	10005408	Weldment - Crossmember - Leaf Spring	1
<i>Parts</i>			
3	10005441	Plate - 16ga - Logo Backing Plate	2
<i>Purchased Parts</i>			
4	80012-5748	5748 Firestone Air Bag	2
5	80143	90° Male Connector, Union, SAE Flare, 3/4" x 3/4" -14 NPT (Sealant)	2
<i>Hardware</i>			
6	12211	Bolt - 3/8"-24 X 1" Gr.8	4
7	12217	Bolt - 3/8"-24 X 1.5" Gr. - 8 YZ	4
8	12409	Bolt - 5/8"-18 X 2" Gr. 8 YZ	4
9	13002	Washer - 3/8" Flat STRL Washer	12
10	13026	Washer - 5/8" Flat SAE Washer	4
11	13028	Washer - 3/4" - Flat SAE Washer	2
12	13046	Split Lock Washer - 3/8" - YZ	4
13	13054	5/8" Lock Washer	4
14	13056	Lock Washer - 3/4"	2
15	13122	Lock Nut - 3/8"-24 Gr. - 8	4
16	13208	Jam Nut - 3/4"-16 Gr. 5	2
17	13870	Hex Bolt: M10-1.5mm x 30mm - Class 10.9 - Z	4
18	13886	M10 Flat Washer	4
19	13893	Washer - M10 Lock Washer	4
20	14062	FLAT WASHER - SAE - #10	4
21	14070	HEX NUT - #10-24 - SS	4
22	14086	SPLIT LOCK WASHER - #10 - SS	4

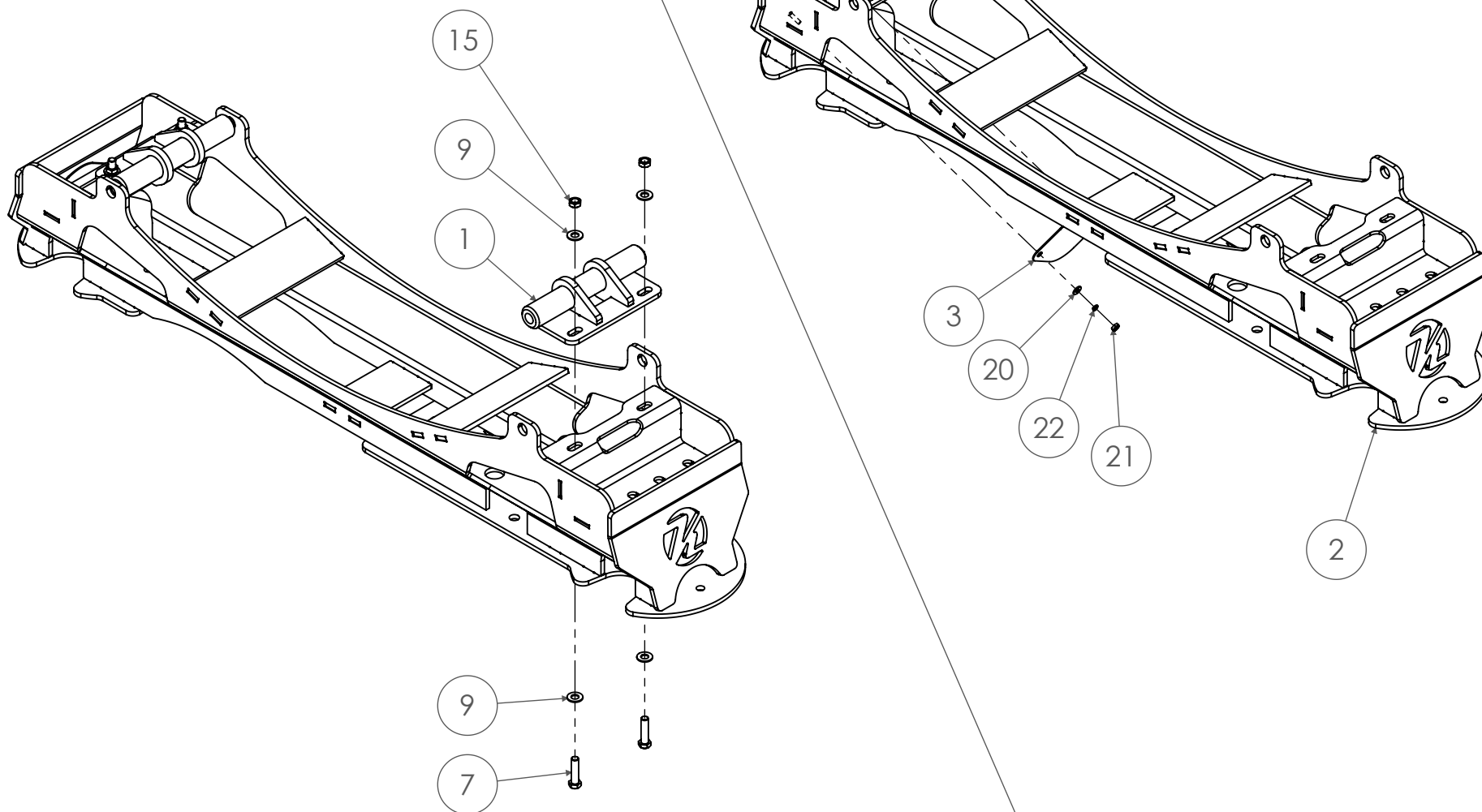
							A	DO NOT SCALE DRAWING	1:20	Approximate Weight = lbs		
						3RD ANGLE PROJECTION	MATL SPECS:					<div>DESCRIPTION: Assembly - Crossmember - Leaf Replacement</div> <div>PROJECT: 2019+ Ram 3500 - 4-Link Rear - 12 inch Lift - Leaf Replacement</div> <div>PART NUMBER: 10006624</div> <div>NOTICE: THIS DOCUMENT AND ITS CONTENTS ARE THE PROPERTY OF KELDERSMAN MFG. NO USE OR COPIES MAY BE MADE WITHOUT WRITTEN PERMISSION FROM KELDERSMAN</div>
						UNLESS OTHERWISE SPEC.						
						DIMNS. IN INCHES						
						STD. TOLERANCES						
						X.X ± .060						
						X.XX ± .030						
						X.XXX ± .010						
						FRAC.DIM. ± 1/32"						
						Deg. ± .5°						
REV	ECN	CHANGE DESCRIPTION	CHANGE BY	DATE			DESIGN BY: Troy Anderson	DATE: 1/21/2020			SHEET 1 OF 3	



NOTICE: THIS DOCUMENT AND ITS CONTENTS ARE THE PROPERTY OF KELDERMAN MFG. NO USE OR COPIES MAY BE MADE WITHOUT WRITTEN PERMISSION FROM KELDERMAN



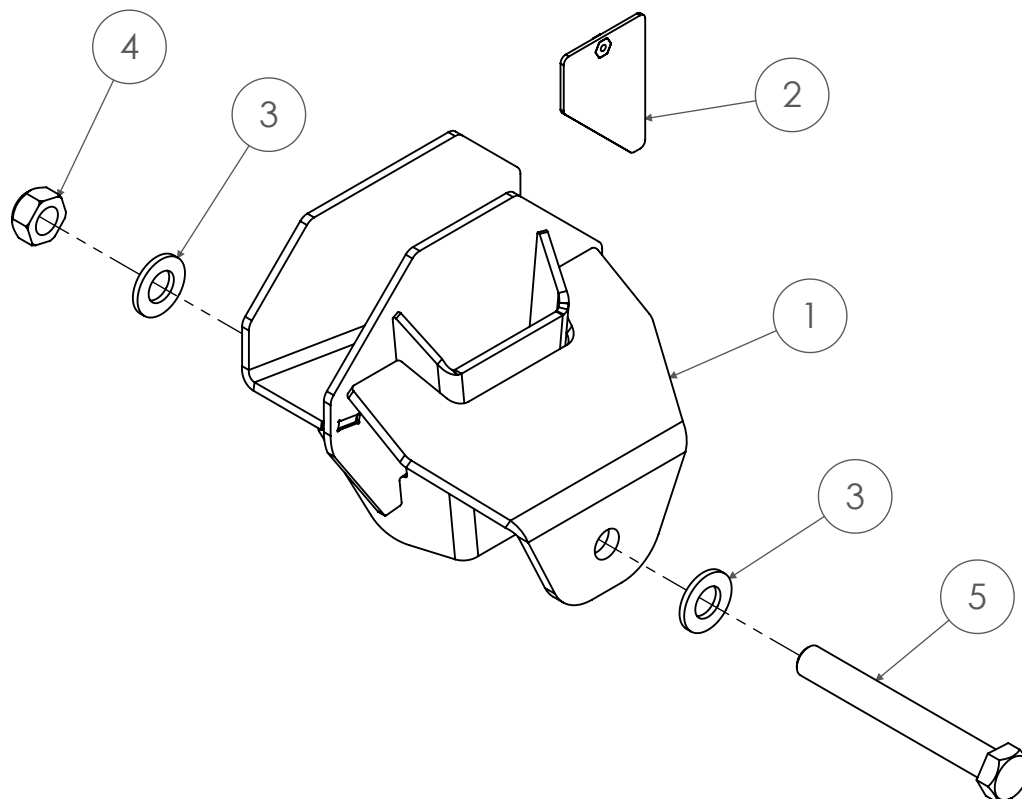
							A	DO NOT SCALE DRAWING	1:20	Approximate Weight = lbs		
						3RD ANGLE PROJECTION	MATL SPECS:					<div>DESCRIPTION: Assembly - Crossmember - Leaf Replacement</div> <div>PROJECT: 2019+ Ram 3500 - 4-Link Rear - 12 inch Lift - Leaf Replacement</div> <div>PART NUMBER: 10006624</div> <div>DESIGN BY: Troy Anderson DATE: 1/21/2020</div> <div>NOTICE: THIS DOCUMENT AND ITS CONTENTS ARE THE PROPERTY OF KELDERMAN MFG. NO USE OR COPIES MAY BE MADE WITHOUT WRITTEN PERMISSION FROM KELDERMAN</div>
						UNLESS OTHERWISE SPEC. DIM'S IN INCHES STD. TOLERANCES X.X ± .040 X.XX ± .030 X.XXX ± .010 FRAC.DIM. ± 1/32" Deg. ± .5°						
REV	ECN	CHANGE DESCRIPTION	CHANGE BY	DATE							SHEET 2 OF 3	







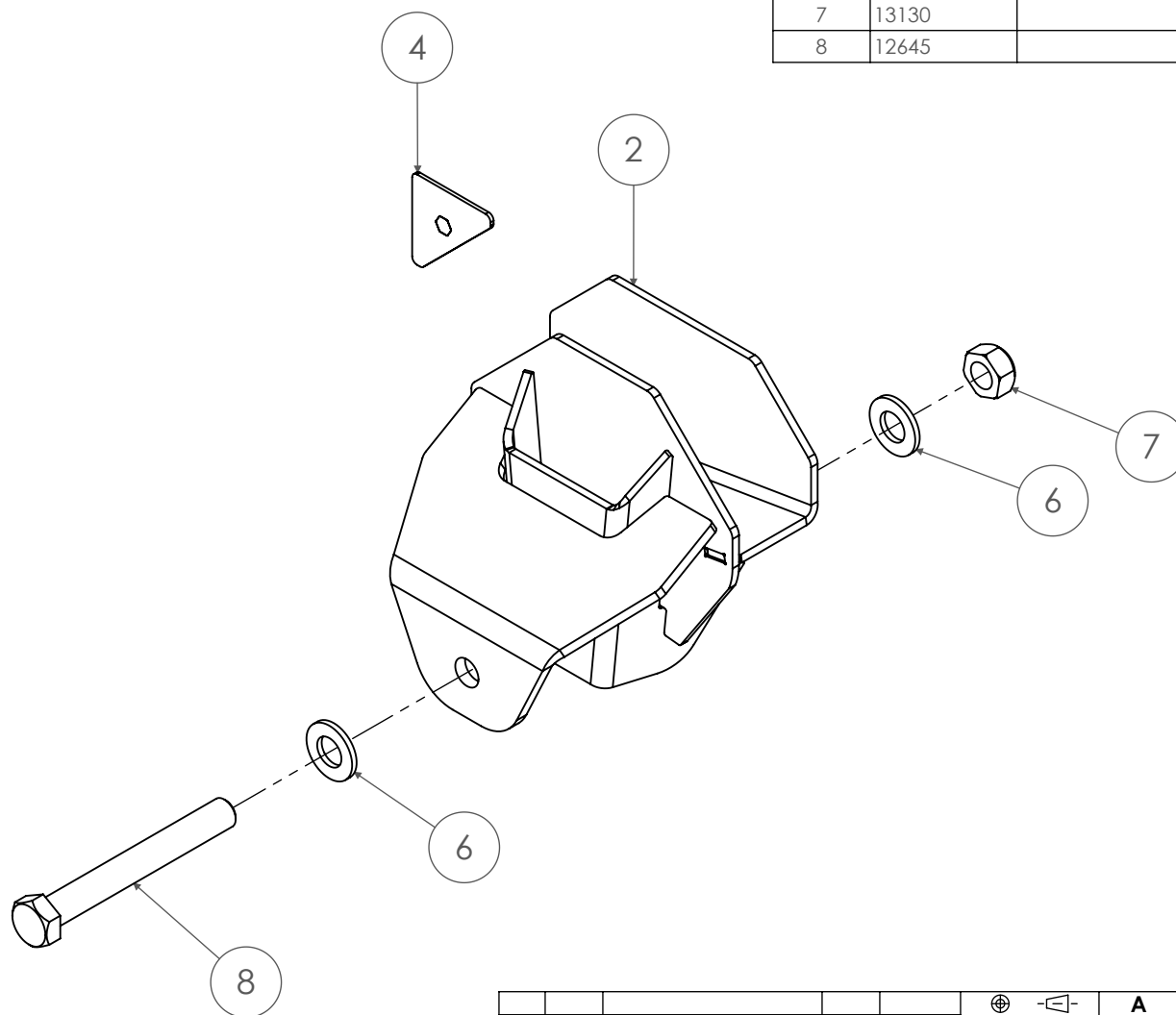
						A DO NOT SCALE DRAWING	1:20	Approximate Weight = lbs	
					3RD ANGLE PROJECTION	MATL SPECS:			
					UNLESS OTHERWISE SPEC. DIMNS. IN INCHES STD. TOLERANCES X.X ±.060 X.XX ±.030 X.XXX ±.010 FRAC.DIM. ±1/32" Deg. ±.5°	DESCRIPTION: Assembly - Crossmember - Leaf Replacement			
					PROJECT: 2019+ Ram 3500 - 4-Link Rear - 12 inch Lift - Leaf Replacement	DESIGN BY: Troy Anderson			
					PART NUMBER: 10006624	DATE: 1/21/2020			
REV	ECN	CHANGE DESCRIPTION	CHANGE BY	DATE	NOTICE: THIS DOCUMENT AND ITS CONTENTS ARE THE PROPERTY OF KELDERMAN MFG. NO USE OR COPIES MAY BE MADE WITHOUT WRITTEN PERMISSION FROM KELDERMAN				SHEET 3 OF 3

ITEM NO.	PART NUMBER	DESCRIPTION	QTY.
<i>Weldments</i>			
1	10005475	Weldment - PS Lower Trailing Arm Mount	1
<i>Install Locating Jigs</i>			
2	10006079	Weldment - Passenger Side Forward Trailing Arm Placement Jig	1
<i>Hardware</i>			
3	13030	Washer - 7/8" Flat SAE Washer	2
4	13130	Lock Nut - 7/8"-14 Gr. 8 YZ	1
5	12645	Bolt - 7/8"-14 X 7" Gr. 8 YZ	1

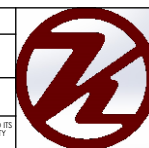


								A	DO NOT SCALE DRAWING	1:5	Approximate Weight = lbs		
							3RD ANGLE PROJECTION	MATL SPECS:					<div>NOTICE: THIS DOCUMENT AND ITS CONTENTS ARE THE PROPERTY OF KELDERMAN MFG. NO USE OR COPIES MAY BE MADE WITHOUT WRITTEN PERMISSION FROM KELDERMAN</div>
							UNLESS OTHERWISE SPEC. DIMS. IN INCHES STD. TOLERANCES X.X ±.060 X.XX ±.030 X.XXX ±.010 FRAC.DIM. ±1/32" Deg. ±.5°	DESCRIPTION: Assembly - Lower Trailing Arm Mount (PS)					
								PROJECT: 2019+ Ram 3500 - 4-Link Rear - 12 inch Lift					
								PART NUMBER: 10006622					
								DESIGN BY: Troy Anderson		DATE: 1/21/2020			
REV	ECN	CHANGE DESCRIPTION	CHANGE BY	DATE									SHEET 1 OF 1

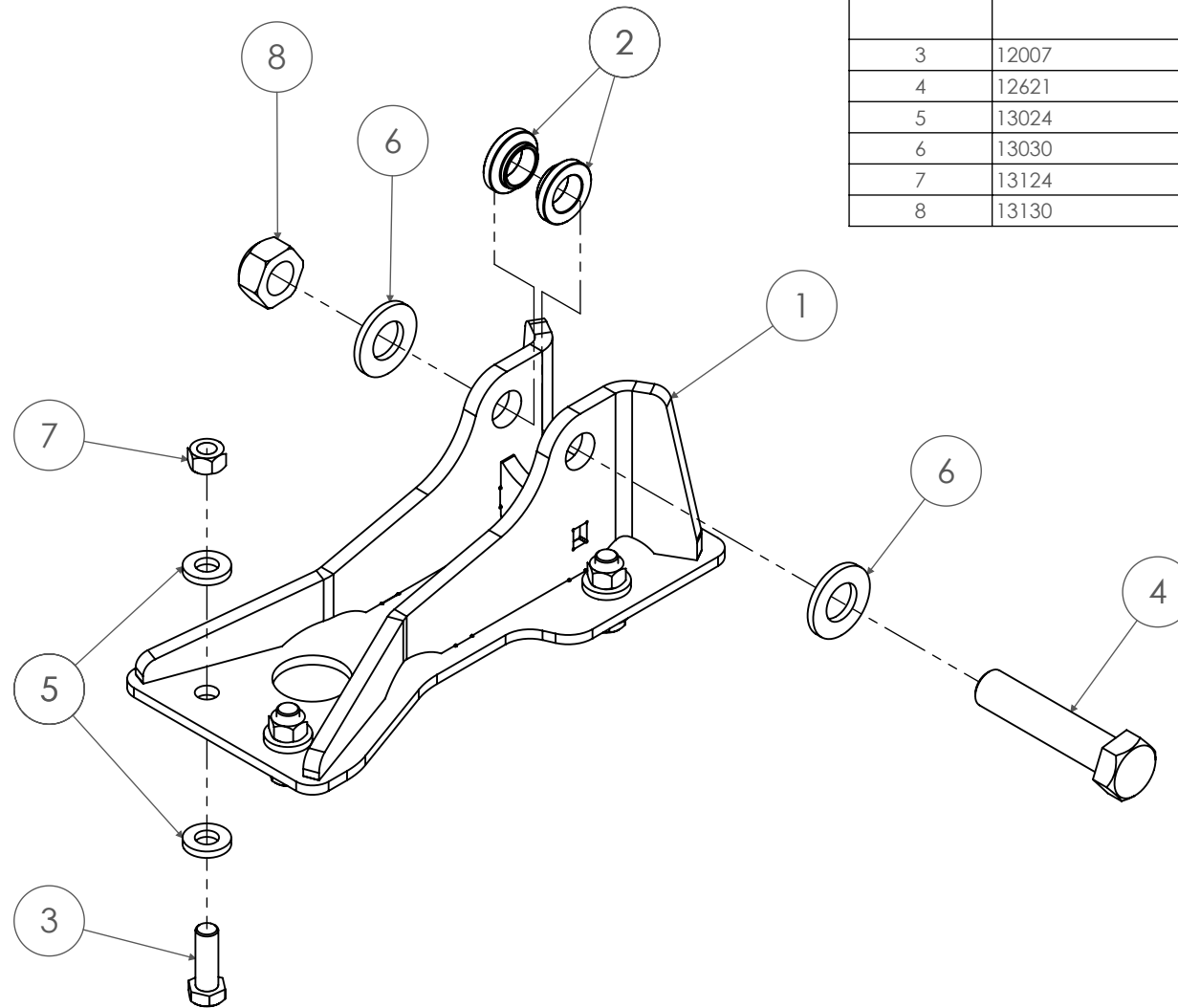
ITEM NO.	PART NUMBER	DESCRIPTION	QTY.
1		<i>Weldments</i>	
2	10005516	Weldment - DS Lower Trailing Arm Mount	1
3		<i>Install Locating Jigs</i>	
4	10006084	Weldment - Driveside Forward Trailing Arm Placement Jig	1
5		<i>Hardware</i>	
6	13030	Washer - 7/8" Flat SAE Washer	2
7	13130	Lock Nut - 7/8"-14 Gr. 8 YZ	1
8	12645	Bolt - 7/8"-14 X 7" Gr. 8 YZ	1



						3RD ANGLE PROJECTION	A	DO NOT SCALE DRAWING	1:20	Approximate Weight = lbs
						UNLESS OTHERWISE SPEC. DIMNS. IN INCHES STD. TOLERANCES X.X ±.060 X.XX ±.030 X.XXX ±.010 FRAC.DIM. ±1/32" Deg. ±.5°	MATL SPECS:			
							DESCRIPTION: Assembly - Lower Trailing Arm Mount (DS)			
							PROJECT: 2019+ Ram 3500 - 4-Link Rear - 12 inch Lift			
							PART NUMBER: 10006621			
REV	ECN	CHANGE DESCRIPTION	CHANGE BY	DATE			DESIGN BY: Troy Anderson	DATE: 1/21/2020		



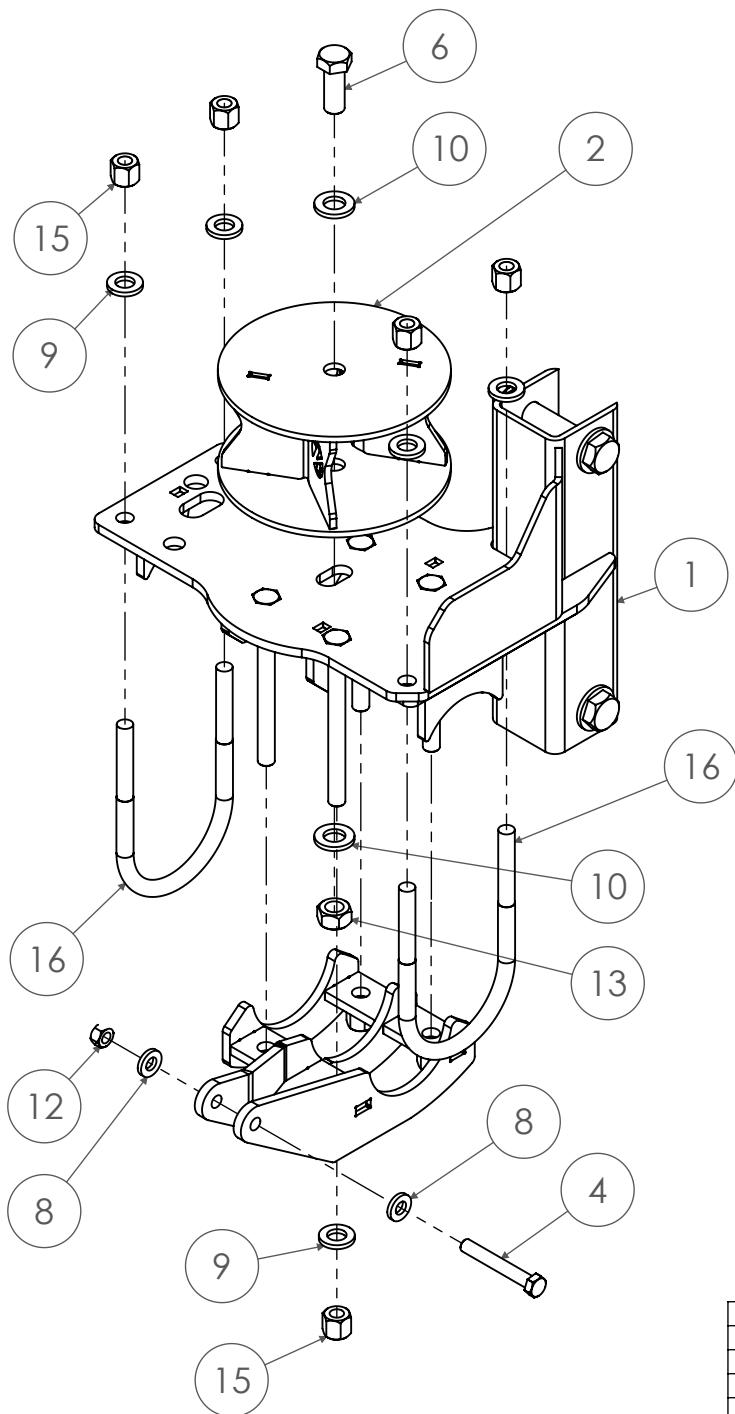
NOTICE: THIS DOCUMENT AND ITS
CONTENTS ARE THE PROPERTY
OF KELDERMAN MFG.
NO USE OR COPIES
MAY BE MADE WITHOUT WRITTEN
PERMISSION FROM KELDERMAN



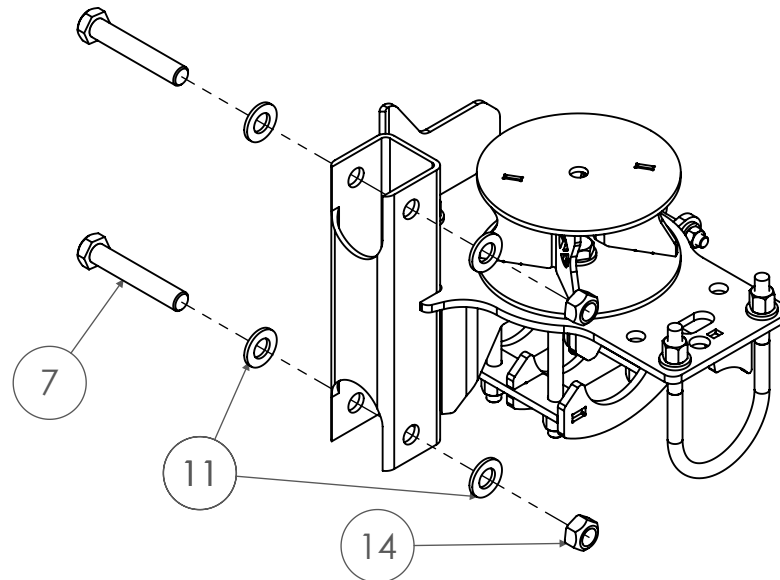
ITEM NO.	PART NUMBER	DESCRIPTION	QTY.
<i>Weldments</i>			
1	10005418	Weldment - Bolt-on PHB Bracket	1
<i>Parts</i>			
2	10006113	CRR - (PHB) Reducer 7/8" To 7/8" Bolt - Narrow	2
<i>Hardware</i>			
3	12007	Bolt - 1/2"-20 X 1 1/2" Gr.8 YZ	5
4	12621	Bolt - 7/8"-14 x 4" Gr. 8 YZ	1
5	13024	Washer - 1/2" Flat SAE Washer	10
6	13030	Washer - 7/8" Flat SAE Washer	2
7	13124	Lock Nut - 1/2"-20 Gr. 8	5
8	13130	Lock Nut - 7/8"-14 Gr. 8 YZ	1

						A DO NOT SCALE DRAWING 1:10 Approximate Weight = lbs
					3RD ANGLE PROJECTION UNLESS OTHERWISE SPEC. DIMS. IN INCHES STD. TOLERANCES X.X ±.060 X.XX ±.030 X.XXX ±.010 FRAC.DIM. ±1/32" Deg. ±.5°	MATL SPECS: DESCRIPTION: Assembly - Upper Crossmember PHB Drop PROJECT: 2019+ Ram 3500 - 4-Link Rear - 12 inch Lift PART NUMBER: 10006620
REV	ECN	CHANGE DESCRIPTION	CHANGE BY	DATE	DESIGN BY: Troy Anderson	DATE: 1/21/2020 NOTICE: THIS DOCUMENT AND ITS CONTENTS ARE THE PROPERTY OF KELDAMAN MFG. NO USE OR COPIES MAY BE MADE WITHOUT WRITTEN PERMISSION FROM KELDAMAN





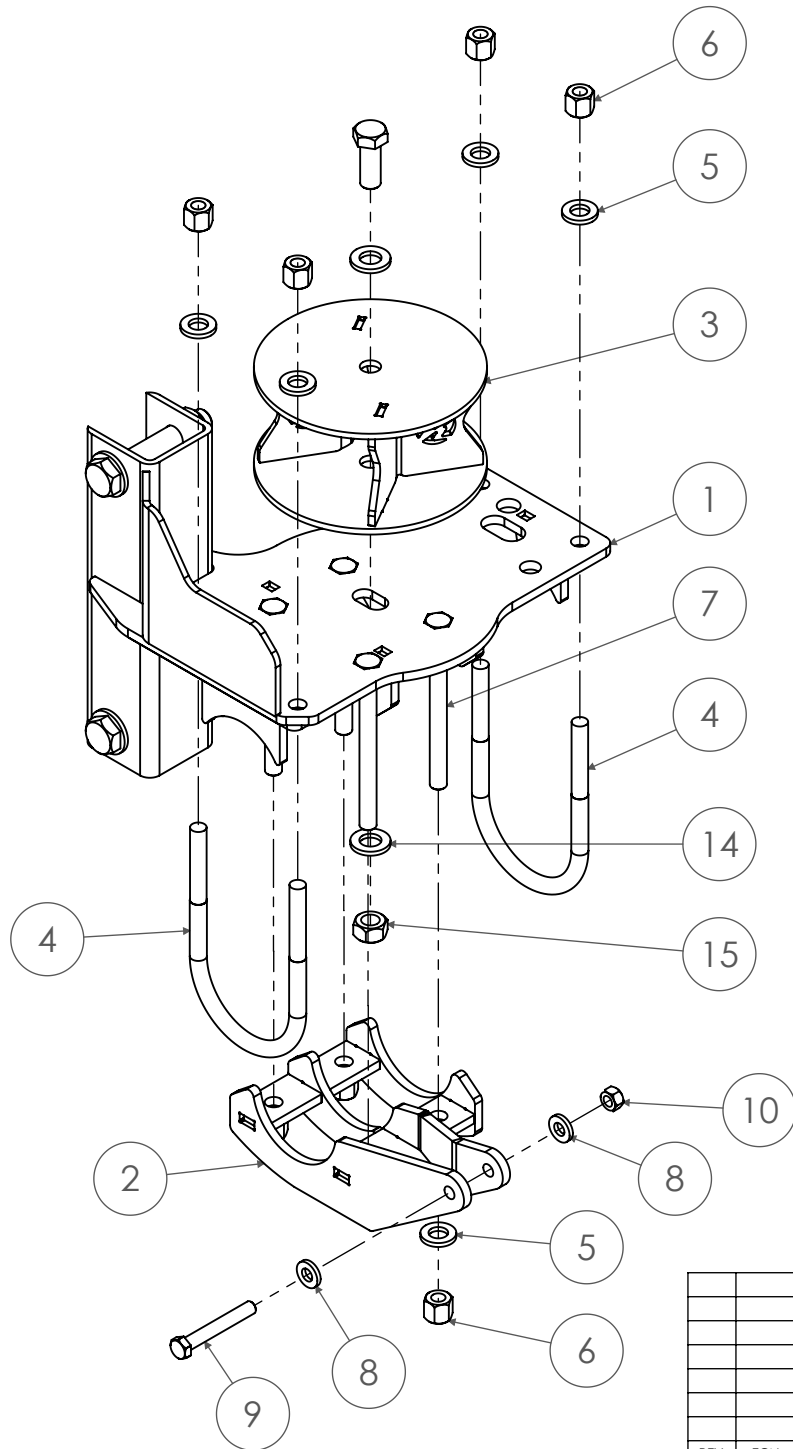
ITEM NO.	PART NUMBER	DESCRIPTION	QTY.
<i>Weldments</i>			
1	10005306	Weldment - Lower Bag Plate (PS) Leaf Spring 4.25" Axle	1
2	10005376	Weldment - Riser 4.50" - 5748 Bag - Spacer	1
3	10005465	Weldment - 4.25" Lower Axle Clamp w/Shock Ears (PS)	1
<i>Hardware</i>			
4	12025	Bolt - 1/2"-20 X 3.5" Gr. 8 YZ	1
5	12451	SCREW-HCS-.63-18X7.00-GR8-YZ	4
6	12511	Hex Bolt: 3/4"-20 x 2" - GR8 - YZ	1
7	12629	Bolt - 7/8"-14 X 5" Gr.8 YZ	2
8	13024	Washer - 1/2" Flat SAE Washer	2
9	13026	Washer - 5/8" Flat SAE Washer	8
10	13028	Washer - 3/4" - Flat SAE Washer	2
11	13030	Washer - 7/8" Flat SAE Washer	4
12	13124	Lock Nut - 1/2"-20 Gr. 8	1
13	13128	Lock Nut - 3/4"-16 Gr. 8 YZ	1
14	13130	Lock Nut - 7/8"-14 Gr. 8 YZ	2
15	13179	NUT - HEX Nut -5/8"-18-GR8-PLN	8
16	14114	U-BOLT 5/8-18 X 8 X 4.5 X 3/1/4 THREAD - PLAIN	2



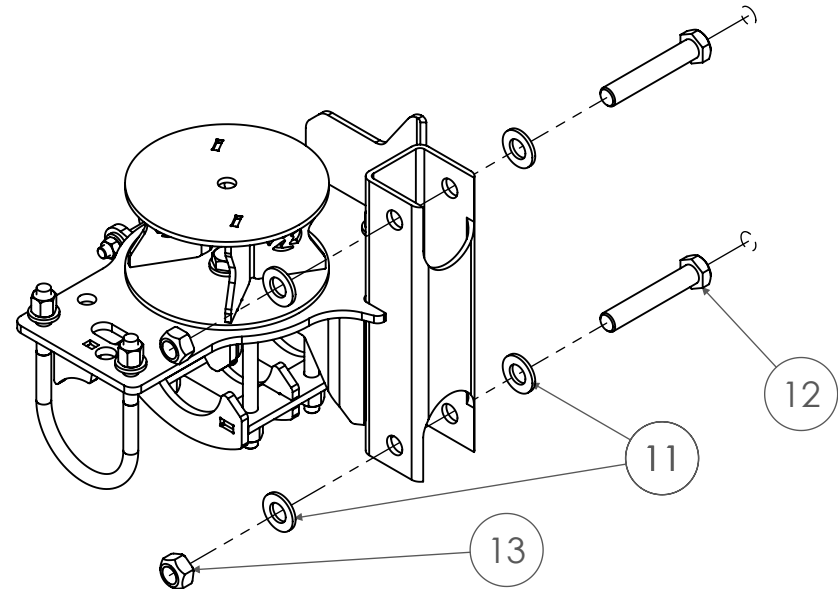
						3RD ANGLE PROJECTION	A	DO NOT SCALE DRAWING	1:10	Approximate Weight = lbs
						UNLESS OTHERWISE SPEC. DIMS. IN INCHES STD. TOLERANCES X.X ±.060 X.XXX ±.010 FRAC.DIM. ±1/32" Deg. ±.5°	MATL SPECS:			
							DESCRIPTION: Assembly - Lower Bag Plate - Leaf Spring Axle (DS)			
							PROJECT: 2019+ Ram 3500 - 4-Link Rear - 12 inch Lift - Leaf Replacement			
							PART NUMBER: 10006617			
REV	ECN	CHANGE DESCRIPTION	CHANGE BY	DATE			DESIGN BY: Troy Anderson		DATE: 1/21/2020	

NOTICE: THIS DOCUMENT AND ITS CONTENTS ARE THE PROPERTY OF KELDERSMAN MFG. NO USE OR COPIES MAY BE MADE WITHOUT WRITTEN PERMISSION FROM KELDERSMAN





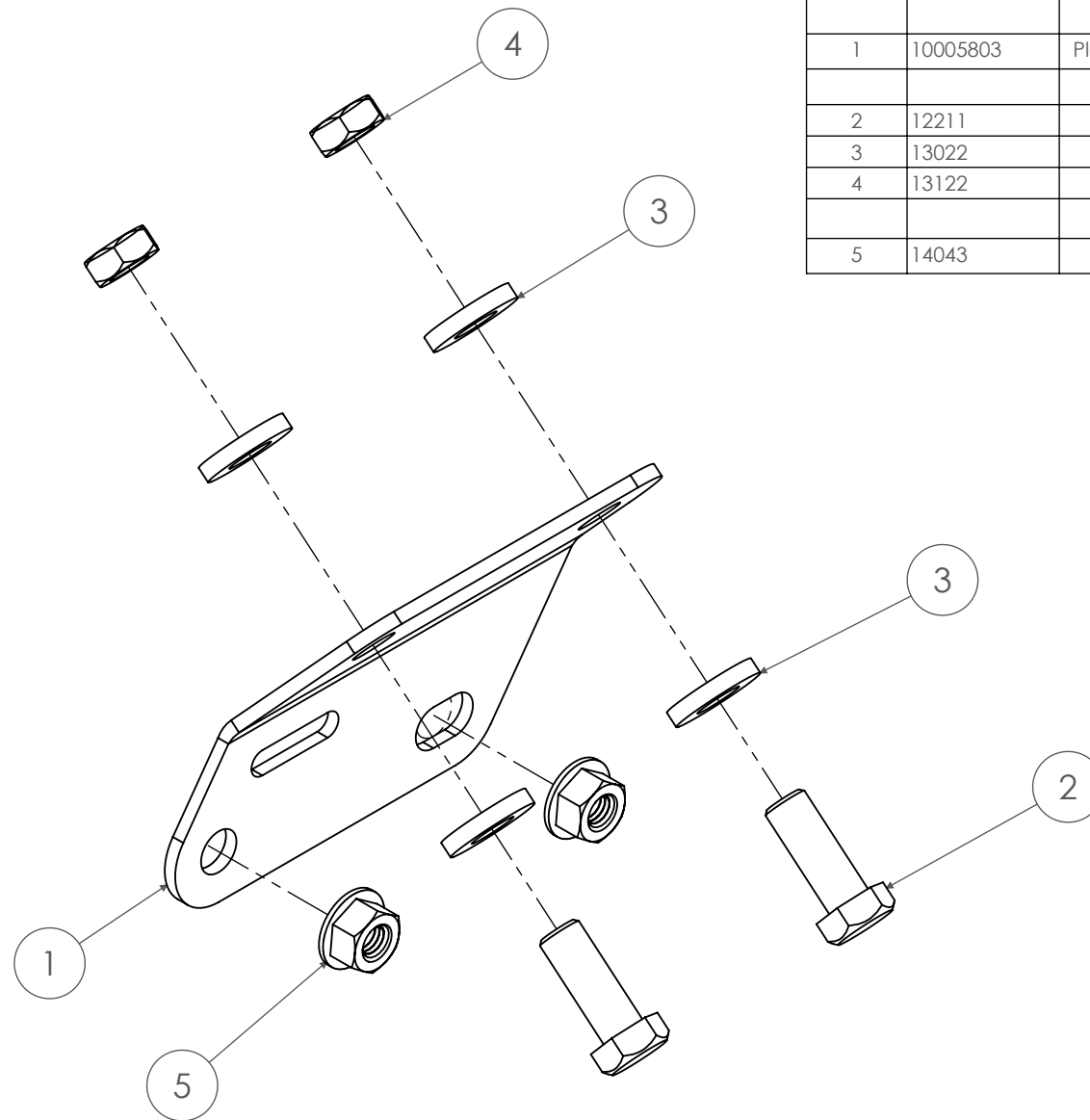
ITEM NO.	PART NUMBER	DESCRIPTION	QTY.
Weldments			
1	10005307	Weldment - Lower Bag Plate (DS) Leaf Spring 4.25" Axle	1
2	10005466	Weldment - 4.25" Lower Axle Clamp w/Shock Ears (DS)	1
3	10005376	Weldment - Riser 4.50" - 5748 Bag - Spacer	1
Hardware			
4	14114	U-BOLT 5/8-18 X 8 X 4.5 X 3/1/4 THREAD - PLAIN	2
5	13026	Washer - 5/8" Flat SAE Washer	8
6	13179	NUT - HEX Nut -5/8"-18-GR8-PLN	8
7	12451	SCREW-HCS-.63-18X7.00-GR8-YZ	4
8	13024	Washer - 1/2" Flat SAE Washer	2
9	12025	Bolt - 1/2"-20 X 3.5" Gr. 8 YZ	1
10	13124	Lock Nut - 1/2"-20 Gr. 8	1
11	13030	Washer - 7/8" Flat SAE Washer	4
12	12629	Bolt - 7/8"-14 X 5" Gr.8 YZ	2
13	13130	Lock Nut - 7/8"-14 Gr. 8 YZ	2
14	13028	Washer - 3/4" - Flat SAE Washer	2
15	13128	Lock Nut - 3/4"-16 Gr. 8 YZ	1
16	12511	Hex Bolt: 3/4"-20 x 2" - GR8 - YZ	1





REV	ECN	CHANGE DESCRIPTION	CHANGE BY	DATE		A DO NOT SCALE DRAWING 1:10 Approximate Weight = lbs	MATL SPECS: DESCRIPTION: Assembly - Lower Bag Plate - Leaf Spring Axle (DS) PROJECT: 2019+ Ram 3500 - 4-Link Rear - 12 inch Lift - Leaf Replacement PART NUMBER: 10006616	NOTICE: THIS DOCUMENT AND ITS CONTENTS ARE THE PROPERTY OF KELDAMAN MFG. NO USE OR COPIES MAY BE MADE WITHOUT WRITTEN PERMISSION FROM KELDAMAN.	
					UNLESS OTHERWISE SPEC. DIMS. IN INCHES STD. TOLERANCES X.X ±.060 X.XXX ±.010 FRAC.DIM. ±1/32" Deg. ±.5°				SHEET 1 OF 1

DESIGN BY: Troy Anderson

DATE: 1/21/2020

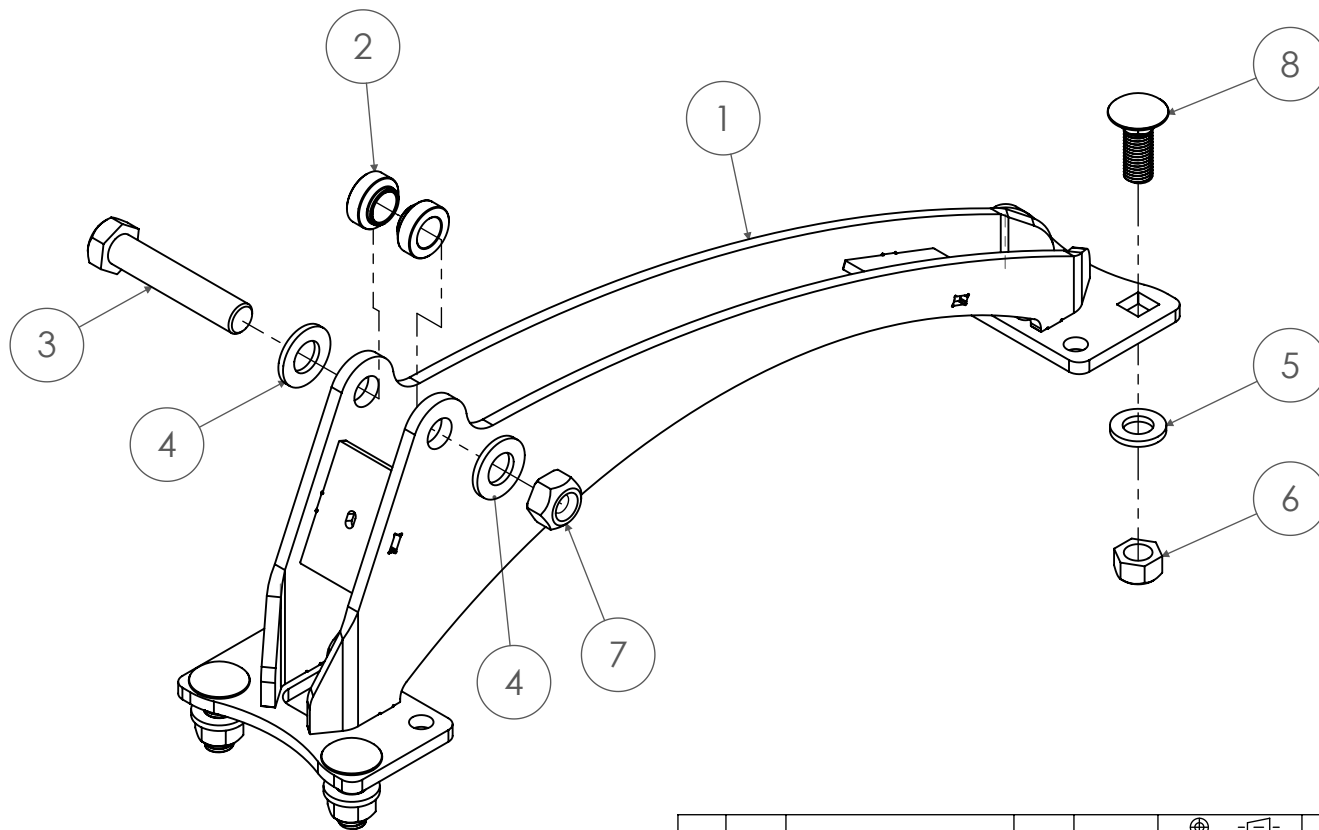


ITEM NO.	PART NUMBER	DESCRIPTION	QTY.
<i>Parts</i>			
1	10005803	Plate - 11ga - Brake Line Relocation Bracket - 2" Extension - w/Bends	1
<i>Hardware</i>			
2	12211	Bolt - 3/8"-24 X 1" Gr.8	2
3	13022	Washer - 3/8" - Flat SAE Washer	4
4	13122	Lock Nut - 3/8"-24 Gr. - 8	2
<i>OEM Hardware</i>			
5	14043	Flange Nut: M8-1.25 - Class 10 - Z	2

							A	DO NOT SCALE DRAWING	1:2	Approximate Weight = lbs		
						3RD ANGLE PROJECTION	MATL SPECS:					DESCRIPTION: Assembly - Brake Line Relocation Bracket (Bent) - 1-3/4" Extension
						UNLESS OTHERWISE SPEC. DIMNS. IN INCHES STD. TOLERANCES X.X ±.060 X.XX ±.030 X.XXX ±.010 FRAC.DIM. ±1/32" Deg. ±.5°	PROJECT: 2019+ Ram 3500 - 4-Link Rear - Stock Height					
							PART NUMBER: 10006125					
							DESIGN BY: Troy Anderson DATE: 12/13/2019					
REV	ECN	CHANGE DESCRIPTION	CHANGE BY	DATE			NOTICE: THIS DOCUMENT AND ITS CONTENTS ARE THE PROPERTY OF KELDERSMAN MFG. NO USE OR COPIES MAY BE MADE WITHOUT WRITTEN PERMISSION FROM KELDERSMAN				SHEET 1 OF 1	



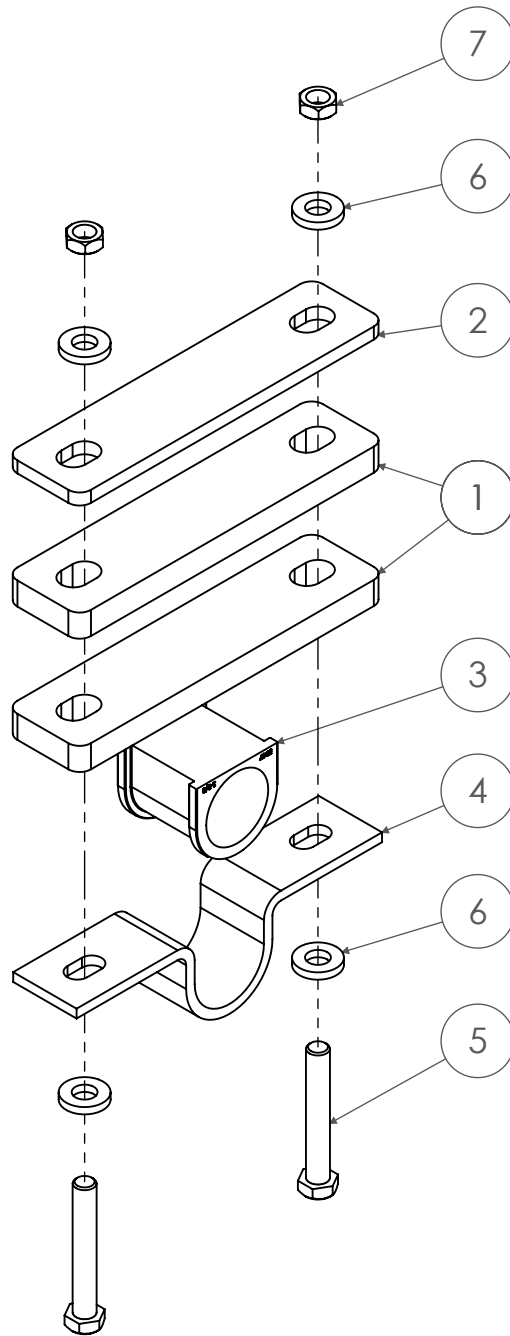
ITEM NO.	PART NUMBER	DESCRIPTION	QTY.
		<i>Weldments</i>	
1	10004431	Weldment - Panhard Bar Crossmember - Short	1
		<i>Parts</i>	
2	10006111	CRR - (PHB) Reducer 7/8" - 7/8" Bolt - Wide	2
		<i>Hardware</i>	
3	12625	SCREW-HCS-.88-14X4.50-GR8-YZ	1
4	13030	Washer - 7/8" Flat SAE Washer	2
5	13028	Washer - 3/4" - Flat SAE Washer	4
6	13108	Lock Nut - 3/4" -10 Gr. 5 YZ	4
7	13130	Lock Nut - 7/8"-14 Gr. 8 YZ	1
8	13813	Carriage Bolt - 3/4"-10 x 2 Gr.5	4



						3RD ANGLE PROJECTION	A	DO NOT SCALE DRAWING	1:20	Approximate Weight = lbs	
						UNLESS OTHERWISE SPEC. DIMNS. IN INCHES STD. TOLERANCES X.X ±.060 X.XXX ±.030 X.XXX ±.010 FRAC.DIM. ±1/32" Deg. ±.5°	MATL SPECS:				
							DESCRIPTION:	Assembly - PHB Crossmember - Stock Height			
							PROJECT:	2019+ Ram 3500 - 4-Link Rear - Stock Height			
							PART NUMBER:	10006097			
REV	ECN	CHANGE DESCRIPTION	CHANGE BY	DATE			DESIGN BY:	Troy Anderson	DATE:	12/13/2019	

NOTICE: THIS DOCUMENT AND ITS CONTENTS ARE THE PROPERTY OF KELDERSMAN MFG. NO USE OR COPIES MAY BE MADE WITHOUT WRITTEN PERMISSION FROM KELDERSMAN

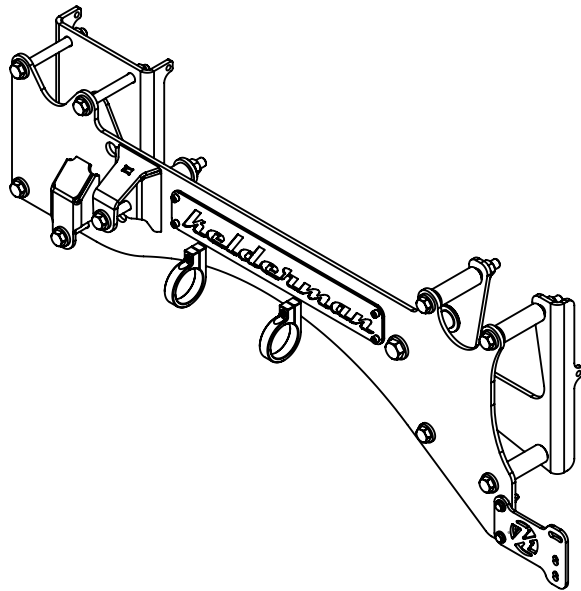




ITEM NO.	PART NUMBER	DESCRIPTION	QTY.
<i>Parts</i>			
1	10004769	Plate - 1/2" - Sway Bar Drop Spacer	2
2	10005463	Plate - 1/4" - Sway Bar Drop Spacer	1
<i>Hardware</i>			
3	80255	Purchased - Sway Bar Bushing - 1-3/8" ID (5347)	1
4	80258	Purchased - Sway Bar D-Ring Bracket - 5" Bolt Spacing - 1.5" ID - 1.4" Wide	1
<i>Purchased Parts</i>			
5	12227	BOLT - 3/8"-24 X 2 1/2" GR8	2
6	13022	Washer - 3/8" - Flat SAE Washer	4
7	13122	Lock Nut - 3/8"-24 Gr. - 8	2

							A	DO NOT SCALE DRAWING	1:5	Approximate Weight = lbs	
						UNLESS OTHERWISE SPEC. DIMNS. IN INCHES STD. TOLERANCES X.X ±.060 X.XXX ±.030 X.XXX ±.010 FRAC.DIM. ±1/32" Deg. ±.5°	MATL SPECS: DESCRIPTION: Assembly - Sway Bar Bushing - 1-3/8" ID				
							PROJECT: 2019+ Ram 3500 - 4-Link Rear				
							PART NUMBER: 10006124				
REV	ECN	CHANGE DESCRIPTION	CHANGE BY	DATE			DESIGN BY: Troy Anderson	DATE: 12/13/2019	<small>NOTICE: THIS DOCUMENT AND ITS CONTENTS ARE THE PROPERTY OF KELDERMAN MFG. NO USE OR COPIES MAY BE MADE WITHOUT WRITTEN PERMISSION FROM KELDERMAN</small>		

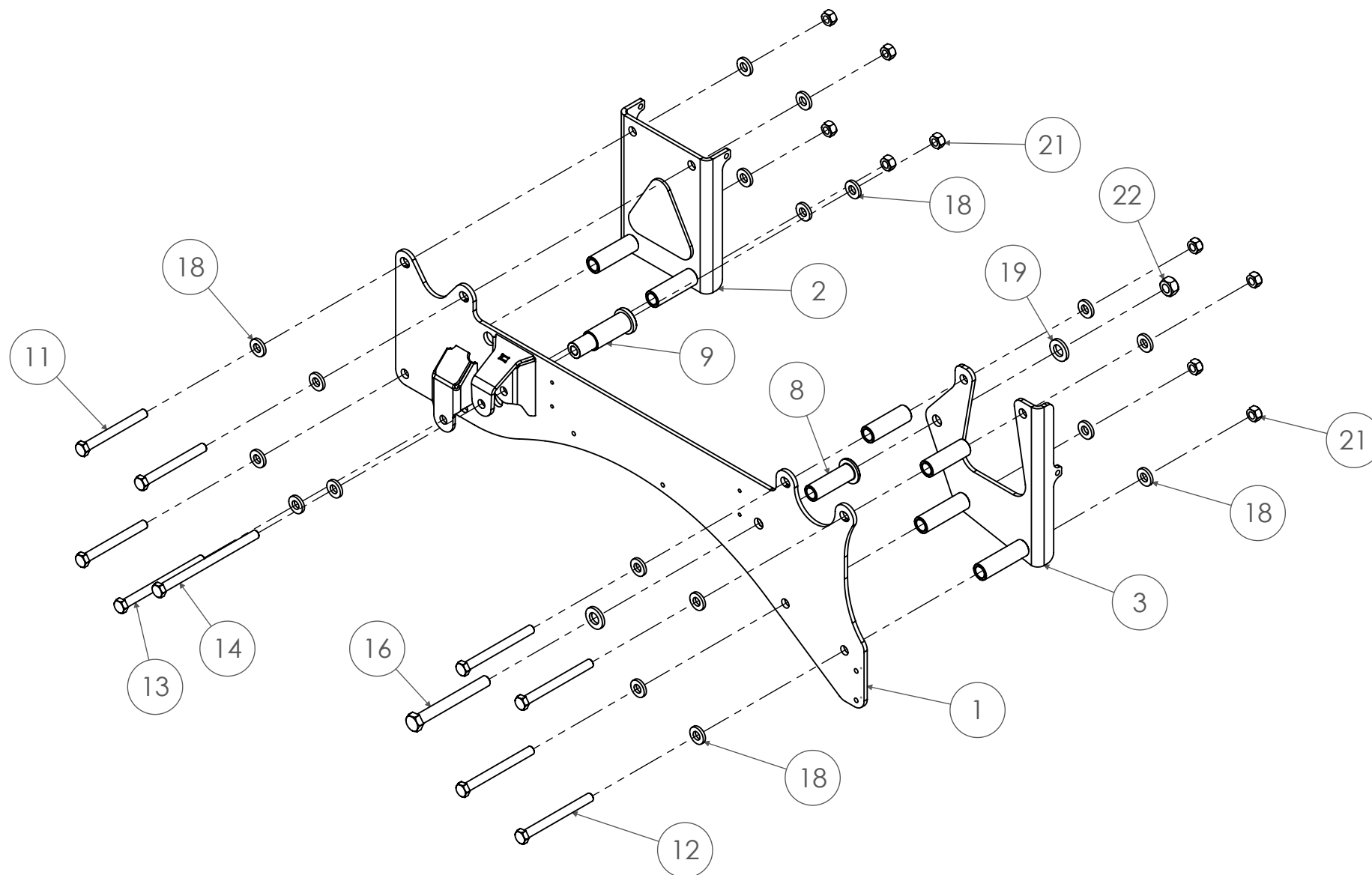






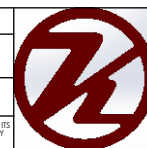
ITEM NO.	PART NUMBER	DESCRIPTION	QTY.
		<i>Purchahsed Parts</i>	
		<i>Weldments</i>	
1	10005460	Weldment - PS Side Plate - Leaf Spring	1
2	10005435	Weldment - Side Plate Frame Clamp - Rear (PS)	1
3	10005438	Weldment - Side Plate Frame Clamp - Front (PS)	1
		<i>Parts</i>	
4	10005763	Plate - 7ga - Height Control Sensor Bracket - Key (PS)	1
5	10005365	Plate - 14ga - Kelderman Name Badge	1
6	10005362	Plate - 14ga - Kelderman Name Plate Backer	1
7	80227	Purchased - Aluminum Split Clamp - 2.0" Dia	2
8	10005405	DOM - 1-1/2" OD x 5/8" ID x 3.161" - Top Hat Bushing Frame Anti-Crush, Front	1
9	10005406	DOM - 1-1/2" OD x 5/8" ID x 4.179" - Top Hat Bushing Frame Anti-Crush - Shock Mount	1
10	10004891	Tube - 1" OD x 0.687" ID x 3" L - Fifth Wheel Ear Anti-Crush Bushing	2
		<i>Hardware</i>	
11	12035	SCREW-HCS-.50-20X4.75-GR8-YZ	3
12	12039	SCREW-HCS-.50-20X5.25-GR8-YZ	4
13	12047	SCREW-HCS-.50-20X6.25-GR8-YZ	1
14	12057	SCREW-HCS-.50-20 X 7.5 - GR8 - YZ	1
15	12112	Bolt - 1/4"-20 x 1 1/4" - Gr.8	2
16	12439	BOLT - GR8 - 5/8"-18 X 5 1/2" - YZ	1
17	13020	1/4" Flat Washer	4
18	13024	Washer - 1/2" Flat SAE Washer	18
19	13026	Washer - 5/8" Flat SAE Washer	2
20	13042	1/4" Lock Washer	2
21	13124	Lock Nut - 1/2"-20 Gr. 8	9
22	13126	Lock Nut - 5/8" - 18 Gr. - 8 YZ	1
23	13140	1/4"-20 Hex Nut	2
24	13503	SOCKET HEAD - 1/4"-20 X 1/2" - SS	4
25	13597	SOCKET HEAD CAP SCREW: 5/16"-18 X 1" - SS	2

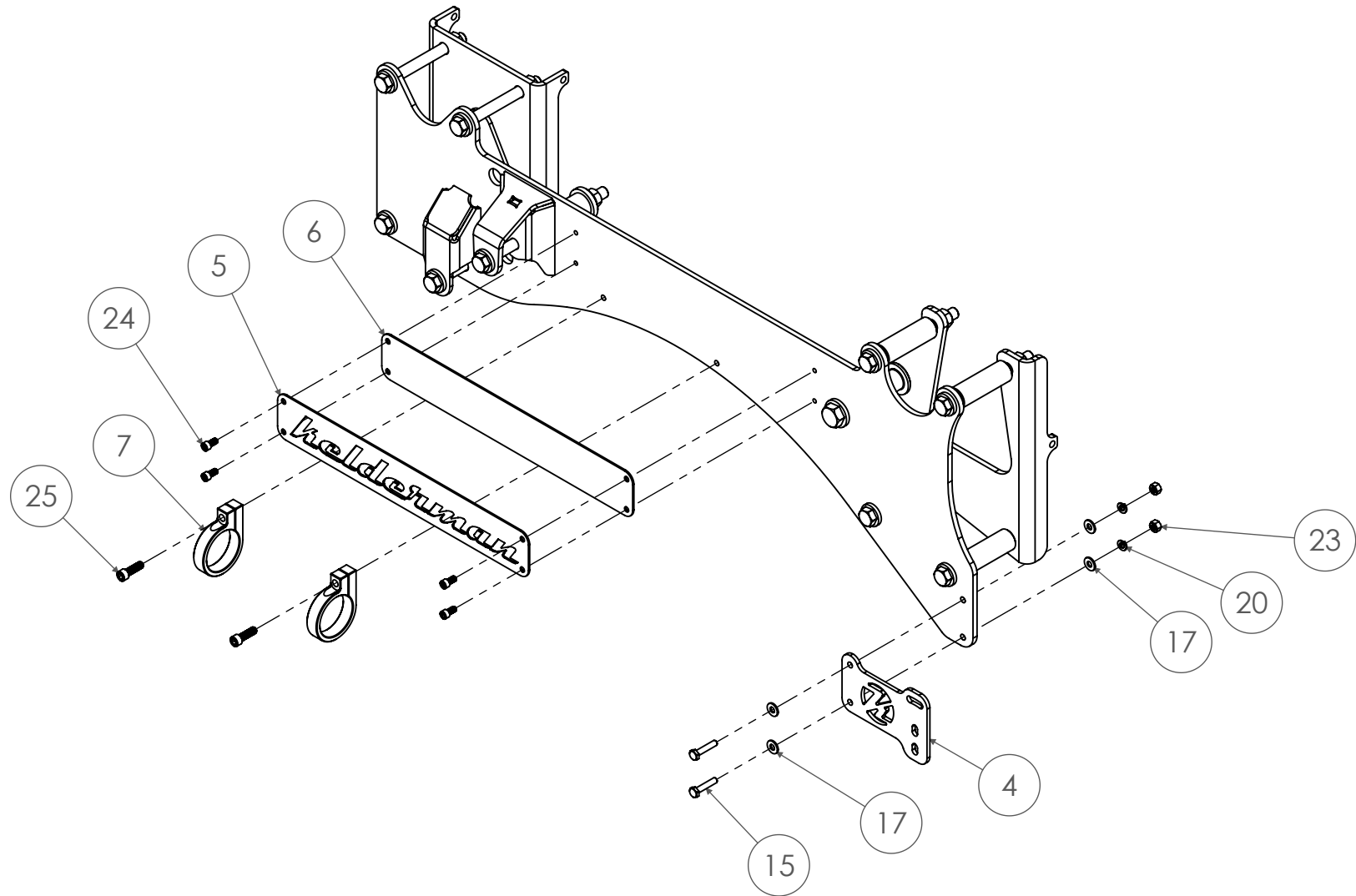
						3RD ANGLE PROJECTION	A	DO NOT SCALE DRAWING	1:20	Approximate Weight = lbs	
						UNLESS OTHERWISE SPEC. DIMS. IN INCHES STD. TOLERANCES X.X ±.060 X.XXX ±.030 X.XXX ±.010 FRAC.DIM. ±1/32" Deg. ±.5°	MATL SPECS:				
							DESCRIPTION:	Assembly - PS Side Plate			
							PROJECT:	2019+ Ram 3500 - 4-Link Rear - 12 inch Lift - Leaf			
							REPLACEMENT				
							PART NUMBER:	10005459			
REV	ECN	CHANGE DESCRIPTION	CHANGE BY	DATE			DESIGN BY:	Ben Adair	DATE:	1/21/2020	NOTICE: THIS DOCUMENT AND ITS CONTENTS ARE THE PROPERTY OF KELDERMAN MFG. NO USE OR COPIES MAY BE MADE WITHOUT WRITTEN PERMISSION FROM KELDERMAN





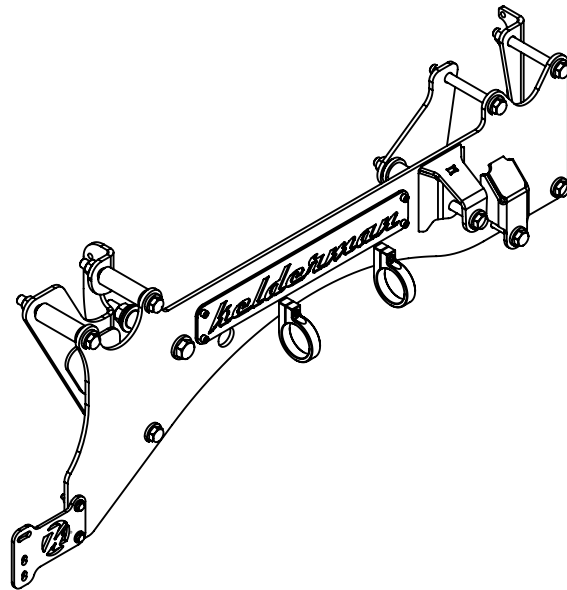


							A DO NOT SCALE DRAWING	1:20	Approximate Weight = lbs		
						3RD ANGLE PROJECTION	MATL SPECS:				<div>NOTICE: THIS DOCUMENT AND ITS CONTENTS ARE THE PROPERTY OF KELDERMAN MFG. NO USE OR COPIES MAY BE MADE WITHOUT WRITTEN PERMISSION FROM KELDERMAN</div>
						UNLESS OTHERWISE SPEC. DIMS. IN INCHES STD. TOLERANCES X.X ±.060 X.XX ±.030 X.XXX ±.010 FRAC. DIM. $\frac{1}{32}$ " Deg. $\pm .5^{\circ}$	DESCRIPTION: Assembly - PS Side Plate				
							PROJECT: 2019+ Ram 3500 - 4-Link Rear - 12 inch Lift - Leaf Replacement				
							PART NUMBER: 10005459				
							DESIGN BY: Ben Adair				
REV	ECN	CHANGE DESCRIPTION	CHANGE BY	DATE			DATE: 1/21/2020			SHEET 2 OF 3	



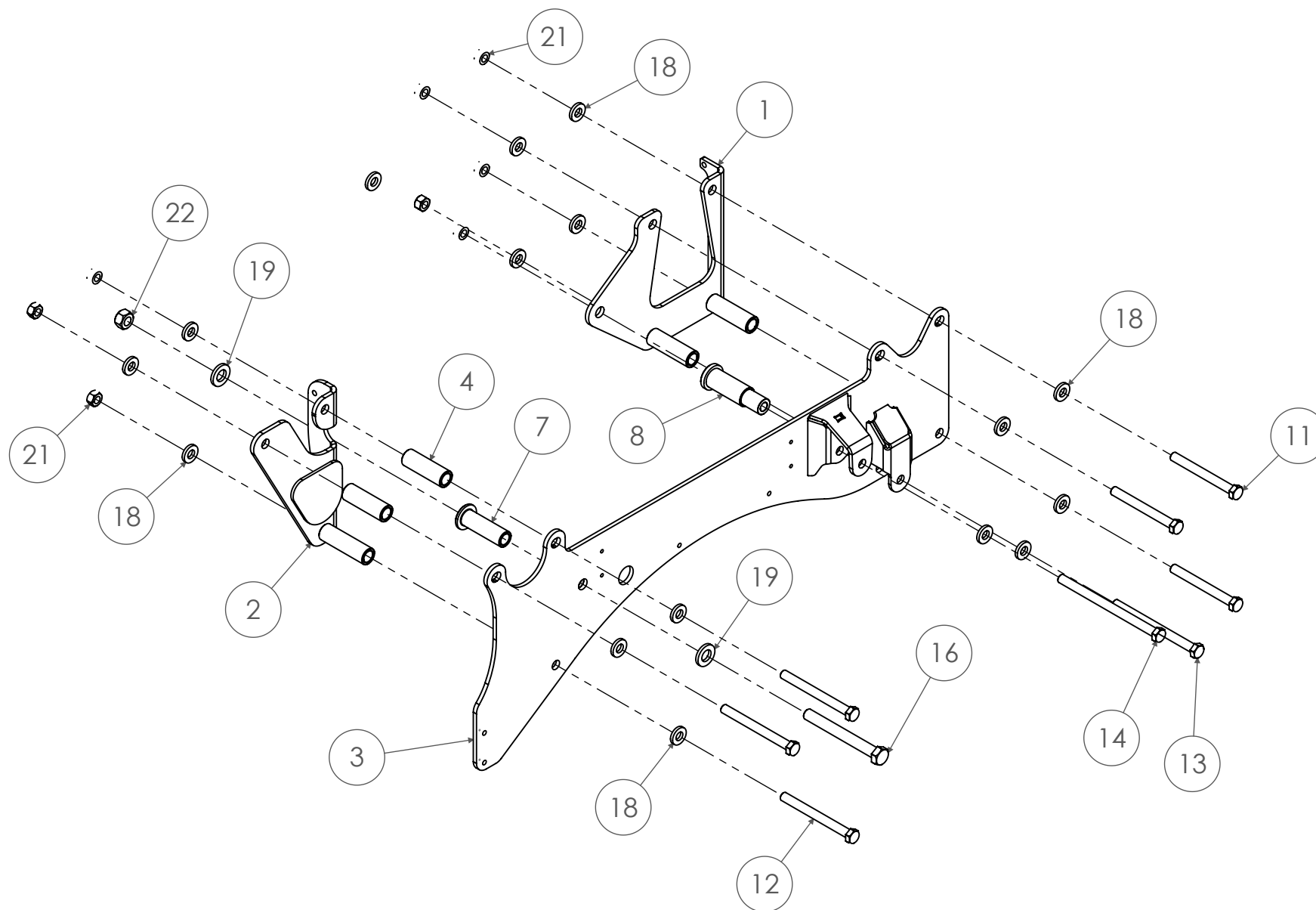


							A	DO NOT SCALE DRAWING	1:20	Approximate Weight = lbs		
						3RD ANGLE PROJECTION	MATL SPECS:					<div>DESCRIPTION: Assembly - PS Side Plate</div> <div>PROJECT: 2019+ Ram 3500 - 4-Link Rear - 12 inch Lift - Leaf Replacement</div> <div>PART NUMBER: 10005459</div> <div>NOTICE: THIS DOCUMENT AND ITS CONTENTS ARE THE PROPERTY OF KELDERMAN MFG. NO USE OR COPIES MAY BE MADE WITHOUT WRITTEN PERMISSION FROM KELDERMAN</div>
						UNLESS OTHERWISE SPEC.						
						DIMS. IN INCHES						
						STD. TOLERANCES						
						X.X ± .060						
						X.XX ± .030						
						X.XXX ± .010						
						FRAC. DIM. ± 1/32"						
						Deg. ± .5°						
REV	ECN	CHANGE DESCRIPTION	CHANGE BY	DATE			DESIGN BY: Ben Adair		DATE: 1/21/2020		SHEET 3 OF 3	



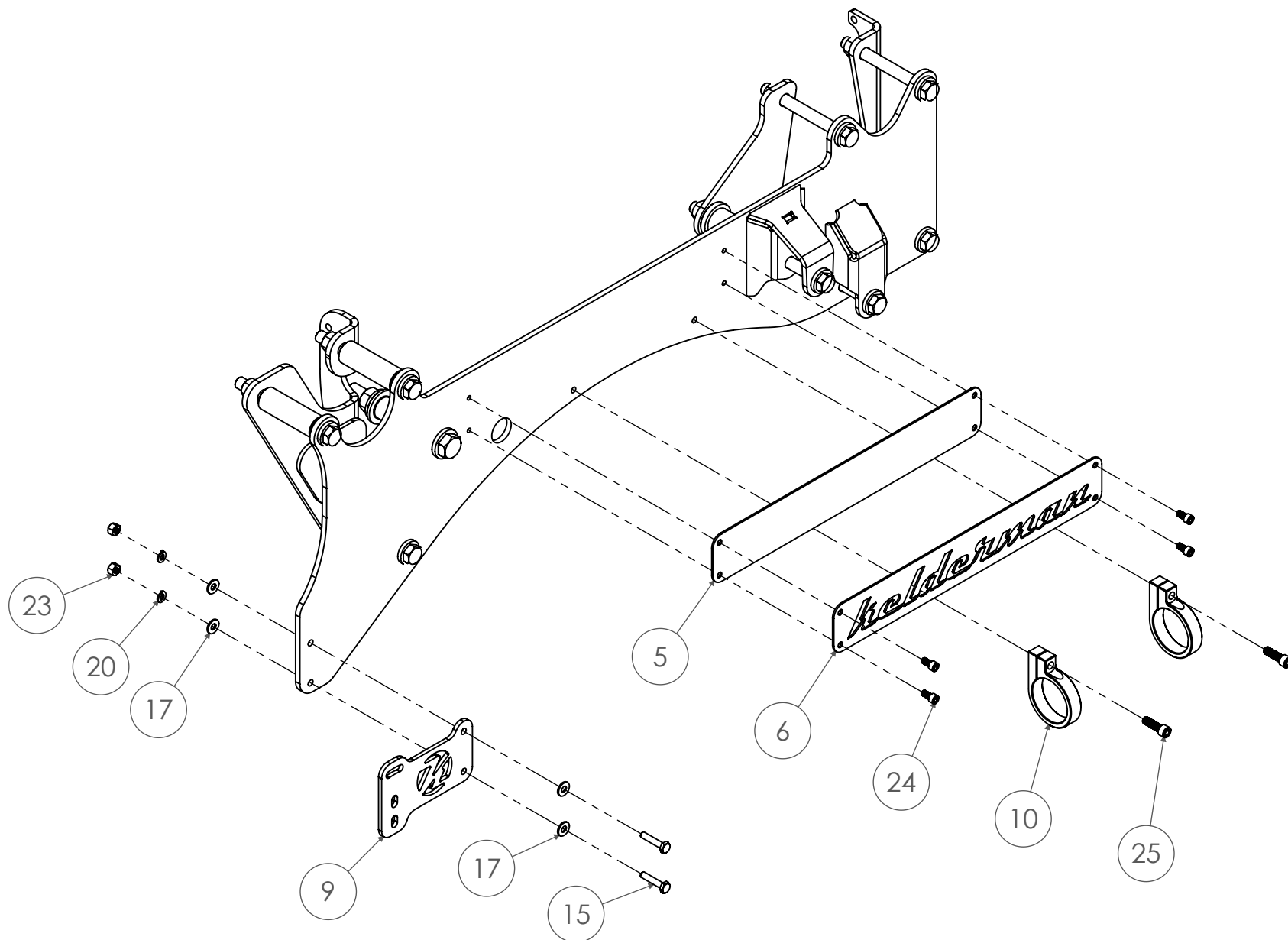
ITEM NO.	PART NUMBER	DESCRIPTION	QTY.
		<i>Weldments</i>	
1	10005434	Weldment - Side Plate Frame Clamp - Rear (DS)	1
2	10005442	Weldment - Side Plate Frame Clamp - Front (DS)	1
3	10005461	Weldment - DS Side Plate - Leaf Spring	1
		<i>Parts</i>	
4	10004891	Tube - 1" OD x 0.687" ID x 3" L - Fifth Wheel Ear Anti-Crush Bushing	2
5	10005362	Plate - 14ga - Kelderman Name Plate Backer	1
6	10005365	Plate - 14ga - Kelderman Name Badge	1
7	10005405	DOM - 1-1/2" OD x 5/8" ID x 3.161" - Top Hat Bushing Frame Anti-Crush, Front	1
8	10005406	DOM - 1-1/2" OD x 5/8" ID x 4.179" - Top Hat Bushing Frame Anti-Crush - Shock Mount	1
9	10005758	Plate - 7ga - Height Control Sensor Bracket - Key (DS)	1
		<i>Purchased Parts</i>	
10	80227	Purchased - Aluminum Split Clamp - 2.0" Dia	2
		<i>Hardware</i>	
11	12035	SCREW-HCS-.50-20X4.75-GR8-YZ	3
12	12039	SCREW-HCS-.50-20X5.25-GR8-YZ	3
13	12047	SCREW-HCS-.50-20X6.25-GR8-YZ	1
14	12057	SCREW-HCS-.50-20 X 7.5 - GR8 - YZ	1
15	12112	Bolt - 1/4"-20 x 1 1/4" - Gr.8	2
16	12439	BOLT - GR8 - 5/8"-18 X 5 1/2" - YZ	1
17	13020	1/4" Flat Washer	4
18	13024	Washer - 1/2" Flat SAE Washer	16
19	13026	Washer - 5/8" Flat SAE Washer	2
20	13042	1/4" Lock Washer	2
21	13124	Lock Nut - 1/2"-20 Gr. 8	8
22	13126	Lock Nut - 5/8" - 18 Gr. - 8 YZ	1
23	13140	1/4"-20 Hex Nut	2
24	13503	SOCKET HEAD - 1/4"-20 X 1/2" - SS	4
25	13597	SOCKET HEAD CAP SCREW: 5/16"-18 X 1" - SS	2

							A DO NOT SCALE DRAWING 1:20 Approximate Weight = lbs	
						3RD ANGLE PROJECTION UNLESS OTHERWISE SPEC. DIMS. IN INCHES STD. TOLERANCES X.X ±.060 X.XX ±.030 X.XXX ±.010 FRAC.DIM. ±1/32" Deg. ±.5°	MATL SPECS: DESCRIPTION: Assembly - DS Side Plate PROJECT: 2019+ Ram 3500 - 4-Link Rear - 12 inch Lift - Leaf Replacement PART NUMBER: 10005455	
REV	ECN	CHANGE DESCRIPTION	CHANGE BY	DATE		DESIGN BY: Troy Anderson	DATE: 1/21/2020	NOTICE: THIS DOCUMENT AND ITS CONTENTS ARE THE PROPERTY OF KELDERMAN MFG. NO USE OR COPIES MAY BE MADE WITHOUT WRITTEN PERMISSION FROM KELDERMAN.



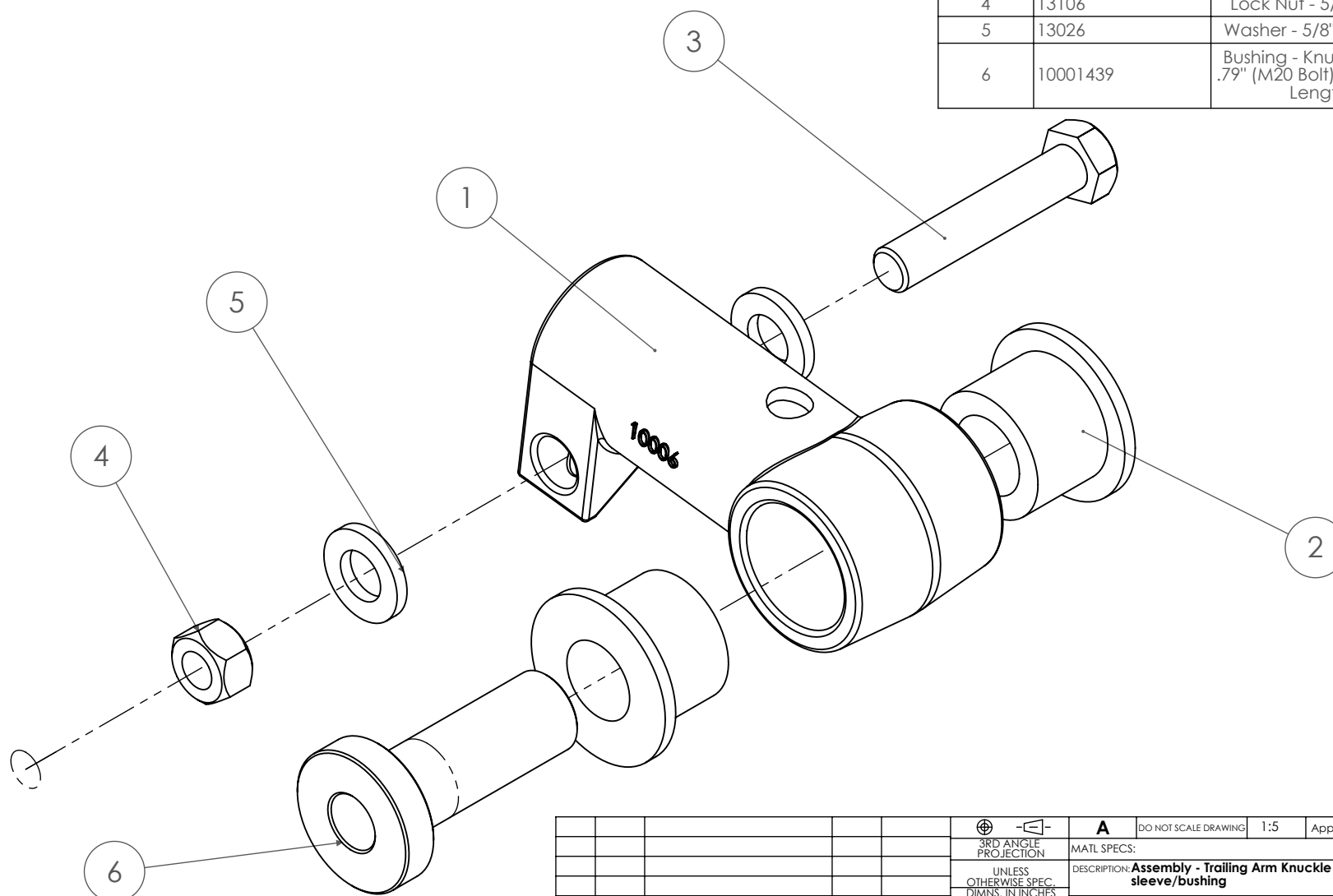
							A	DO NOT SCALE DRAWING	1:20	Approximate Weight = lbs
						3RD ANGLE PROJECTION	MATERIAL SPECIFICATIONS:			
						UNLESS OTHERWISE SPEC. DIMENSIONS IN INCHES STD. TOLERANCES X.XX ±.060 X.XXX ±.030 X.XXX ±.010 FRACTIONAL DIM. ±1/32" Deg. ±.5°	DESCRIPTION: Assembly - DS Side Plate			
							PROJECT: 2019+ Ram 3500 - 4-Link Rear - 12 inch Lift - Leaf			
							REPLACEMENT PART NUMBER: 10005455			
REV	ECN	CHANGE DESCRIPTION	CHANGE BY	DATE			DESIGN BY: Troy Anderson	DATE: 1/21/2020	NOTICE: THIS DOCUMENT AND ITS CONTENTS ARE THE PROPERTY OF KELDERSMAN MFG. NO USE OR COPIES MAY BE MADE WITHOUT WRITTEN PERMISSION FROM KELDERSMAN	





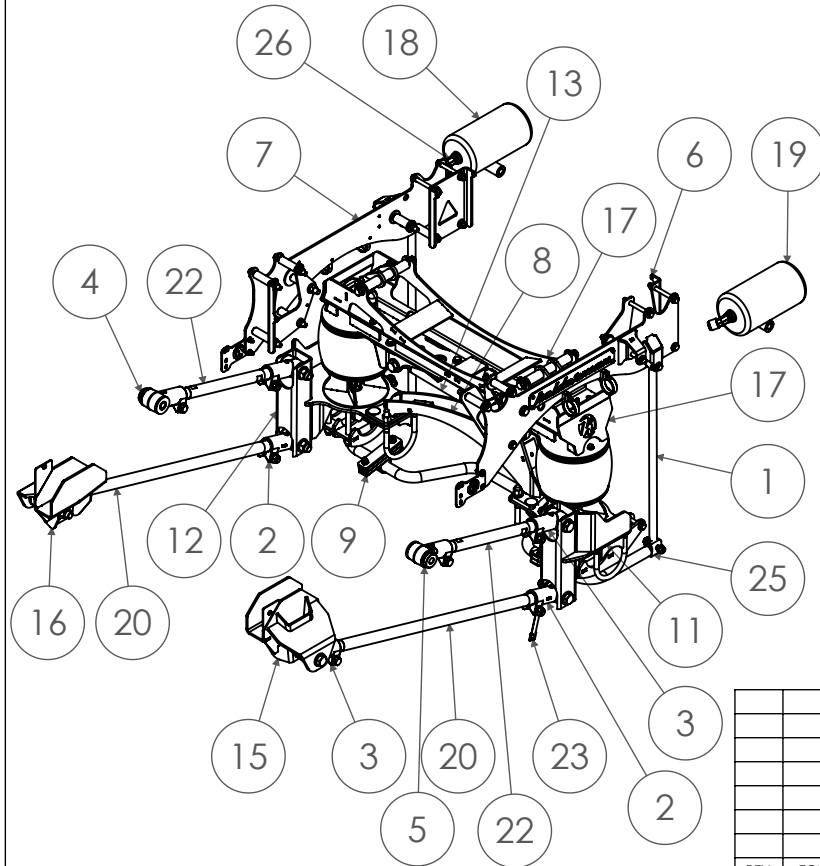
						A DO NOT SCALE DRAWING 1:20 Approximate Weight = lbs	
					3RD ANGLE PROJECTION	MATL SPECS:	
					UNLESS OTHERWISE SPEC.	DESCRIPTION: Assembly - DS Side Plate	
					DIMENS. IN INCHES	PROJECT: 2019+ Ram 3500 - 4-Link Rear - 12 inch Lift - Leaf Replacement	
					STD. TOLERANCES	PART NUMBER: 10005455	
REV	ECN	CHANGE DESCRIPTION	CHANGE BY	DATE	X.X ± 0.60 X.XX ± 0.30 X.XXX ± 0.10 FRAC.DIM. ± 1/32" Deg. ± .5°	DESIGN BY: Troy Anderson DATE: 1/21/2020	NOTICE: THIS DOCUMENT AND ITS CONTENTS ARE THE PROPERTY OF KELDERMAN MFG. NO USE OR COPIES MAY BE MADE WITHOUT WRITTEN PERMISSION FROM KELDERMAN.

ITEM NO.	PART NUMBER	DESCRIPTION	QTY.
<i>Parts</i>			
1	10006	Purchased Parts - TORQUE ARM END (LHT)	1
2	80136	Purchased Parts - Bushing - OD 1.79" ID - 1 1/8" Length - 1 7/16"	2
<i>Hardware</i>			
3	12420	Bolt - 5/8"-11 X 3 1/4" Gr. 5 YZ	1
4	13106	Lock Nut - 5/8" - 11 - Gr. 5 YZ	1
5	13026	Washer - 5/8" Flat SAE Washer	2
6	10001439	Bushing - Knuckle Sleeve - ID - .79" (M20 Bolt) 2 OD's - 1 1/4" 2" Length - 3.607	1





						A DO NOT SCALE DRAWING 1:5 Approximate Weight = lbs
					UNLESS OTHERWISE SPEC. DIMS. IN INCHES STD. TOLERANCES X.X ±.060 X.XXX ±.030 X.XXX ±.010 FRAC.DIM. ± 1/32" Deg. ± .5°	MATL SPECS: DESCRIPTION: Assembly - Trailing Arm Knuckle 10006 (LHT) w/ sleeve/bushing PROJECT: Trailing Arms PART NUMBER: 10001440
REV	ECN	CHANGE DESCRIPTION	CHANGE BY	DATE	DESIGN BY: Justin Christensen DATE: 1/22/2020	NOTICE: THIS DOCUMENT AND ITS CONTENTS ARE THE PROPERTY OF KELDAMAN MFG. NO USE OR COPIES MAY BE MADE WITHOUT WRITTEN PERMISSION FROM KELDAMAN







ITEM NO.	PART NUMBER	DESCRIPTION	QTY.
<i>Assemblies</i>			
1	11918	Assembly - End Link - 29.00"	2
2	18498	Assembly - Cast Knuckle 10006	2
3	18499	Assembly - Cast Knuckle 10005 - 1" ID	4
4	10001440	Assembly - Trailing Arm Knuckle 10006 (LHT) w/ sleeve/bushing	1
5	10001440	Assembly - Trailing Arm Knuckle 10006 (LHT) w/ sleeve/bushing	1
6	10005455	Assembly - DS Side Plate	1
7	10005459	Assembly - PS Side Plate	1
8	10006097	Assembly - PHB Crossmember - Stock Height	1
9	10006124	Assembly - Sway Bar Bushing - 1-3/8" ID	2
10	10006125	Assembly - Brake Line Relocation Bracket (Bent) - 1-3/4" Extension	1
11	10006616	Assembly - Lower Bag Plate - Leaf Spring Axle (DS)	1
12	10006617	Assembly - Lower Bag Plate - Leaf Spring Axle (PS)	1
13	10006619	Assembly - Panhard Bar - 17.5" Bar Length - 7/8" Bolt	1
14	10006620	Assembly - Upper Crossmember PHB Drop	1
15	10006621	Assembly - Lower Trailing Arm Mount (DS)	1
16	10006622	Assembly - Lower Trailing Arm Mount (PS)	1
17	10006624	Assembly - Crossmember - Leaf Replacement	1
<i>Weldments</i>			
18	10005062	Weldment - Accumulator Tank - 1 gal. (PS)	1
19	10005063	Weldment - Accumulator Tank - 1 gal. (DS)	1
<i>Parts</i>			
20	10627	43" Trailing Arm Bar	2
21	11551	Plate - 1/4" - 1.5"OD x .53" ID x 1/4"	2
22	52122	22" Trailing Arm Bar	2
<i>Purchased Parts</i>			
23	17551	Wire/Hose/E-brake Cable Retainer	1
24	80094	90° Male Elbow Tube 1/4" x 1/4-18 NPT	2
25	80246	Purchased - Sway Bar - 1-3/8" Dia	1
26	80261	45° Male Male Elbow, 3/4" x 3/4" -14 NPT - Brass Fitting, Swivel	2
27	80264	Purchased - Vibration-Damping Loop Clamp - 1/2" ID	2
<i>Hardware</i>			
28	12021	Bolt - 1/2"-20 X 3" Gr.8 YZ	2
29	13024	Washer - 1/2" Flat SAE Washer	4
30	13124	Lock Nut - 1/2"-20 Gr. 8	2

							A DO NOT SCALE DRAWING 1:50 Approximate Weight = lbs		
						3RD ANGLE PROJECTION	MATL SPECS:		Kit - 4-Link Rear - 12" Lift - Leaf Replacement
						UNLESS OTHERWISE SPEC. DIMENS. IN INCHES STD. TOLERANCES X.X ± .060 X.XX ± .030 X.XXX ± .010 FRAC.DIM. ± 1/32" Deg. ± .5°	DESCRIPTION:		
							PROJECT: 2019+ Ram 3500		
							PART NUMBER: 10005279		
REV	ECN	CHANGE DESCRIPTION	CHANGE BY	DATE			DESIGN BY: Troy Anderson DATE: 1/21/2020	NOTICE: THIS DOCUMENT AND ITS CONTENTS ARE THE PROPERTY OF KELDAMAN MFG. NO USE OR COPIES MAY BE MADE WITHOUT WRITTEN PERMISSION FROM KELDAMAN	SHEET 1 OF 2





									A	DO NOT SCALE DRAWING	1:50	Approximate Weight = lbs	 SHEET 2 OF 2	
								3RD ANGLE PROJECTION	MATL SPECS:					
								UNLESS OTHERWISE SPEC. DIMNS. IN INCHES STD. TOLERANCES	DESCRIPTION: Kit - 4-Link Rear - 12" Lift - Leaf Replacement					
								X.X ± .060 X.XX ± .030 X.XXX ± .010 FRAC.DIM. $\frac{1}{32}$ " Deg. $\pm \frac{1}{2}^\circ$	PROJECT: 2019+ Ram 3500					
									PART NUMBER: 10005279	NOTICE: THIS DOCUMENT AND ITS CONTENTS ARE THE PROPERTY OF KELDERMAN MFG. NO USE OR COPIES MAY BE MADE WITHOUT WRITTEN PERMISSION FROM KELDERMAN.				
REV	ECN	CHANGE DESCRIPTION	CHANGE	DATE					DESIGN BY: Troy Anderson					DATE: 1/21/2020